

## BENIGUET — GARCIA ALUMINUM



**Builder:** GARCIA ALUMINUM

**Year Built:** 2005

**Model:** Cruising Sailboat

**Price:** PRICE ON APPLICATION

**Location:** France

**LOA:** 86' 5" (26.33m)

**Beam:** 22' 10" (6.95m)

**Min Draft:** 8' 3" (2.50m)

**Max Draft:** 13' 10" (4.20m)

**Cruise Speed:** 9 Kts. (10 MPH)

Our experienced yacht broker, Andrey Shestakov, will help you choose and buy a yacht that best suits your needs **BENIGUET — GARCIA ALUMINUM** from our catalogue. Presently, at Shestakov Yacht Sales Inc., we have a wide variety of yachts available on our sale's list. We also work in close contact with all the big yacht manufacturers from all over the world.

If you would like to buy a yacht **BENIGUET — GARCIA ALUMINUM** or would like help answering any questions concerning purchasing, selling or chartering a yacht, please call **+1(954)274-4435**

---

# TABLE OF CONTENTS

---

TABLE OF CONTENTS	2
SPECIFICATIONS	3
Overview	3
Basic Information	3
Dimensions	3
Speed, Capacities and Weight	3
Accommodations	4
Hull and Deck Information	4
Engine Information	4
PHOTOS	5
CONTACTS	6
Contact details	6
Telephones	6
Office hours	6
Address	6

---

# SPECIFICATIONS

---

## Overview

---

Very nice aluminium sloop with a lifting keel. She undertook a fantastic trip around the world via Panama, French Polynesian, New Zealand, Mauritius, Cape of Good Hope. BENIGUET is exceptionally well built and maintained. She had a major refit in 2014. She is now back as new and ready to go again. She is ideal for ocean passages and going around the world. Indeed, a very nice comfortable, strong and reliable sailing yacht.

## Basic Information

---

<b>Category:</b> Cruising Sailboat	<b>Model Year:</b> 2005
<b>Year Built:</b> 2005	<b>Refit Year:</b> 2015
<b>Country:</b> France	<b>Cockpit:</b> Yes

## Dimensions

---

<b>LOA:</b> 86' 5" (26.33m)	<b>LWL:</b> 77' 5" (23.59m)
<b>LOD:</b> 85' 5" (26.03m)	<b>Beam:</b> 22' 10" (6.95m)
<b>Min Draft:</b> 8' 3" (2.50m)	<b>Max Draft:</b> 13' 10" (4.20m)

## Speed, Capacities and Weight

---

<b>Cruise Speed:</b> 9 Kts. (10 MPH)	<b>Cruise Speed RPM:</b> 1800 Kts.
<b>Cruise Speed Range:</b> 2500	<b>Max Speed Range:</b> 2800 Kts.
<b>Displacement:</b> 152118.96078 Pounds	<b>Water Capacity:</b> 435.8838858 Gallons
<b>Fuel Capacity:</b> 1320.86026 Gallons	<b>Fuel Consumption:</b> 4.226752832 Gallons

---

## Accommodations

---

**Total Cabins:** 4

**Total Berths:** 12

**Total Heads:** 4

**Crew Cabin:** 1

**Crew Berths:** 2

**Crew Heads:** 1

---

## Hull and Deck Information

---

**Hull Material:** Aluminum

**Hull Color:** White

**Exterior Designer:** BERRET-RACOUPEAU **Interior Designer:** Pierre FRUTSCHI  
YACHT DESIGN

---

## Engine Information

---

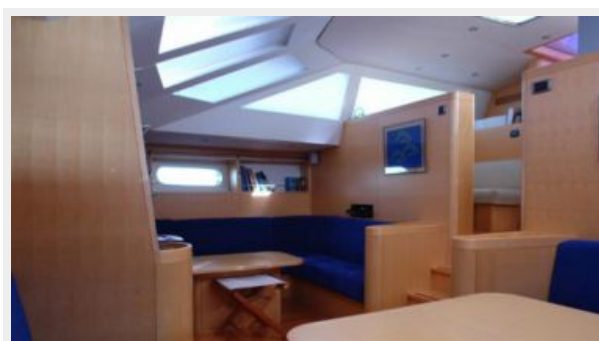
**Engines:** 1

**Manufacturer:** Volvo

**Model:** 318 HP VOLVO TAMD 63 P/L

**Engine Type:** Inboard

# PHOTOS



# CONTACTS

---

Andrey Shestakov, leading yacht broker of the sales department of Shestakov Yacht Sales Inc. Shestakov Yacht Sales Inc., the official representative of the Miami/Fort Lauderdale FL headquarters.

## Contact details

---

Email: [andrey@shestakovyachtsales.com](mailto:andrey@shestakovyachtsales.com)

Web: [shestakovyachtsales.com/en/](http://shestakovyachtsales.com/en/)

## Telephones

---

USA: +1(954)274-4435

## Office hours

---

Monday – Saturday: **9:00 - 21:00** EDT

Sunday: **closed**

## Address

---



Harbour Towne Marina, 850 NE 3rd St,  
STE 213, Dania, FL 33004