

## SOLE MIO — SUNSEEKER



**Builder:** SUNSEEKER

**Year Built:** 2007

**Model:** Motor Yacht

**Price:** PRICE ON APPLICATION

**Location:** Mexico

**LOA:** 66' 0" (20.12m)

**Beam:** 17' 1" (5.21m)

**Max Draft:** 5' 0" (1.52m)

Our experienced yacht broker, Andrey Shestakov, will help you choose and buy a yacht that best suits your needs **SOLE MIO — SUNSEEKER** from our catalogue. Presently, at Shestakov Yacht Sales Inc., we have a wide variety of yachts available on our sale's list. We also work in close contact with all the big yacht manufacturers from all over the world.

If you would like to buy a yacht **SOLE MIO — SUNSEEKER** or would like help answering any questions concerning purchasing, selling or chartering a yacht, please call **+1(954)274-4435**

# TABLE OF CONTENTS

TABLE OF CONTENTS	2
SPECIFICATIONS	4
Overview	4
Basic Information	4
Dimensions	4
Speed, Capacities and Weight	5
Accommodations	5
Hull and Deck Information	5
Engine Information	5
DETAILED INFORMATION	6
Salon	6
Galley	6
Master Stateroom	7
Master Head	7
VIP Stateroom	8
VIP Head	9
Guest Stateroom	9
Guest Head	9
Crew Quarters	10
Deck	11
Fly Bridge	11
Aft Deck	12
Electronics And Navigation	13
Electrical System	13
Engine and Mechanical Equipment	15
Underwater Equipment	15
Exclusions	16
Disclaimer	16

PHOTOS	17
CONTACTS	23
Contact details	23
Telephones	23
Office hours	23
Address	23

# SPECIFICATIONS

---

## Overview

---

Major price reduction owner has purchased a new boat

SOLE MIO is a stellar example of a late model Sunseeker 66 Manhattan. She has been cared for with a open check book and has been captain maintained since the owner has taken ownership. All her recommended major service have been completed with service records on file. If your on the market for a 65'-75' motor yacht this should be on the top of your list.

Some key features:

2000 hour engine service performed

All new teak 2017

All new exterior upholstery 2017

U.S. Spec 60hz

Bow & stern thruster

U.S Duty paid

## Basic Information

---

**Category:** Motor Yacht

**Sub Category:** Flybridge

**Model Year:** 2007

**Year Built:** 2007

**Country:** Mexico

## Dimensions

---

**LOA:** 66' 0" (20.12m)

**Beam:** 17' 1" (5.21m)

**Max Draft:** 5' 0" (1.52m)

---

## Speed, Capacities and Weight

---

**Water Capacity:** 251 Gallons

**Fuel Capacity:** 898 Gallons

---

## Accommodations

---

**Total Cabins:** 3

**Total Heads:** 3

---

## Hull and Deck Information

---

**Hull Material:** Fiberglass

---

## Engine Information

---

**Engines:** 2

**Manufacturer:** MAN

**Model:** V10

**Engine Type:** Inboard

**Fuel Type:** Diesel

---

# DETAILED INFORMATION

---

## Salon

---

The salon with its satin-finished cherry interior has three semi-circular brown leather settees just aft of the lower helm station, or settee can be used with the folding dining table.

- Sharp 32" LCD flatscreen TV
- 3 Zone Bose Hi-Fi radio/CD/DVD/surround system
- Large dining area with seating around folding table
- Stainless steel sliding patio door to aft cockpit
- Brazilian Hard Wood Floors
- Re-shaped couches upgrade upholstery
- Overhead lighting 24 V
- Low-level lights 24 V
- AC sockets (two)
- Scatter cushions
- Custom Cabinets
- Roman blinds

## Galley

---

Located just aft of the salon, the galley is equipped with every convenience including a combination microwave convection oven, dishwasher, flat-top range and much more!

- Ceramic flat-top stove
- Electric refrigerator and freezer
- Microwave convection oven
- Dishwasher
- Double AC sockets
- Hand-held fire extinguisher

- Custom Cabinets with custom made glass racks
- Stainless steel sink
- Hot and cold water
- Trash bin
- 8 Place setting cutlery and crockery sets

---

## Master Stateroom

---

The elegant full-beam Master Stateroom has a walk-in cedar-lined closet with mirror, wardrobe drawer, 26" Sharp LCD TV, dressing/lounge area and satin cherry joinerwork.

- Double berth
- Safe with digital lock
- Drawers and storage beneath
- Bedside cabinets
- Settee
- Sharp 26" LCD TV (upgrade)
- Door to ensuite toilet/shower
- Dressing table with mirror and stool
- Overhead lights 24 V
- Two reading lights 24 V
- Large opening and fixed portholes
- Radio/CD/DVD player
- Door to walk-in wardrobe
- Custom Leather Borders and head board
- Chess nut floors

---

## Master Head

---

- Vacuum toilet
- Avonite counter top
- Two washbasins
- Taps and accessories
- Separate shower compartment
- Overhead light 24v
- Opening porthole with mosquito screen and blind
- Vacuum toilet
- Avonite counter top
- Two washbasins
- Taps and accessories
- Separate shower compartment
- Opening porthole with mosquito screen and blind

## VIP Stateroom

---

The spacious VIP features satin cherry joinery work, upgraded television and ensuite bathroom.

- Double berth
- Sharp Aquos 20" LCD TV
- Drawers and storage beneath
- Wardrobe with mirrored doors
- Deck hatch with screen
- Fitted carpet
- Dressing table with mirror and stool
- Halogen overhead lights
- Reading lights (two)
- Opening portholes with mosquito screens and curtains (two)
- Door to ensuite toilet/shower
- Chestnut floors
- Leather Head Board and borders



---

## VIP Head

---

- Vacuum toilet
- Avonite counter top
- Extractor fan
- Mirrored vanity unit
- Shelved cupboard
- Halogen overhead light
- Opening porthole with mosquito screen and blind
- Washbasin
- Taps and accessories
- Separate shower compartment
- Toothbrush and glass holder
- Towel ring and towels

---

## Guest Stateroom

---

This Optional Cabin has two single berths (one is a pullman) and wardrobe.

- two single berths
- Under-berth stowage and drawers
- Opening porthole with mosquito screen and curtains
- Double AC socket
- Bedside table
- Reading lights (two)
- Wardrobe
- Halogen overhead lights
- Flatscreen TV
- Access to guest head

---

## Guest Head

---

- Vacuum toilet

- Separate shower compartment
- Extractor fan
- Mirrored vanity unit
- Towel ring and towels
- Halogen overhead light
- Shaver socket
- Avonite counter top
- Washbasin
- Taps and accessories
- Shelved cupboard
- Toothbrush and glass holder
- Opening porthole with mosquito screen and blind

## Crew Quarters

---

The optional crew quarters features air conditioning, two berths and a separate shower/toilet room.

- Entrance door from rear cockpit
- Two single berths
- Electric toilet and holding tank
- Hanging rail
- Halogen overhead light
- AC socket
- Separate shower room with hot and cold water
- Mirror
- Opening porthole with mosquito screen
- Shaver port

---

## Deck

---

- Pulpit and cockpit rails
- Stainless steel fendering with rubber insert
- Bow sunbathing cushions
- Adjustable back rests on bow cushions
- Electric winch and capstan with deck, cockpit and flybridge controls
- Triple pantograph windscreen wipers 24v and washers
- Fuel fillers port and starboard gauge installed at first stage
- Ensign staff and socket
- Fender tie bar under anchor locker lid
- Fittings all in stainless steel
- Vacuum gauge
- 8 Stainless steel deck cleats
- Stainless steel bow plate
- Stainless steel bow roller with anchor stop
- Upgraded 110 lb anchor & hardware and 90 meter chain
- Chain locker-fender stowage
- Curved safety glass windscreen
- Fresh water filler
- IMCO navigation lights
- Remote spotlight
- 4 Warps
- Upgraded stainless hand rails throughout
- Removable outdoor speakers (2)

---

## Fly Bridge

---

- Hydraulic steering
- Duplicate autopilot controls
- Compass
- Steering indicator
- Wet bar with hot and cold water and ice maker
- Radio/CD remote control
- Cockpit speakers
- Upholstered sunbathing area
- Instrument cover
- Stainless steel guard rails and grab rails
- Low-level flybridge lights
- Self draining
- Acrylic deflecting spray screen
- Duplicate engine controls and instrumentation
- Trim tab control
- Seating for 6 to 8
- Folding table
- Glass holders
- Ceramic electric griddle
- Electric cooling unit for cool box
- Bimini top in navy canvas
- Lighting under radar arch
- Upgraded triple horn
- Upgraded Bimini top
- New covers for all seats and pads

## Aft Deck

---

- Hydraulic swim platform
- Teak-laid swim platform and steps
- Stainless steel swimming ladder
- Stowage for fenders
- Hot and Cold swimming shower
- Fresh-water connection
- Dockside AC shore power connection
- Stern docking lights
- Deck flood lights
- Stern safety doors
- Teak table with cover
- Engine room access hatch
- Overhead cockpit lights
- Low-level courtesy lights aft cockpit

- Low-level courtesy lights
- Teak-laid cockpit floor
- Self draining
- Moulded staircase to flybridge
- Stern seating
- Ice maker
- Twin stern capstan winches 24 v and fairleads
- Cockpit speakers
- 2 Frigid Rigid cooler seats on aft deck

## Electronics And Navigation

---

- Lower Helm:
- Upholstered Besenzoni electric helm seat
- Console with walnut Fascia
- Hydraulic power steering
- Electronic speed log
- Depth sounder
- VHF radio dual station
- Trim tab controls
- 12 V socket
- Glass holders
- Hand-held fire extinguisher
- Demisters
- Side opening door to side deck
- Two Furuno Navnet (radar, plotter, depth) & Simrad autopilot 25
- Aft facing TV camera (monitor in pilothouse and master)
- Wooden rimmed steering wheel
- Full analog engine instrumentation
- Rudder indicator
- Fresh water gauge
- Fuel gauge
- Compass
- Horn
- Switch panels
- Windscreen wipers with washers
- TV hooked up to both helms
- 2 GPS antennas, radio/weather antenna
- Flir day/night/fog camera-viewable in salon, master & both helms
- On Board Security System

## Electrical System

---

---

## 20 kW 60Hz genset (Upgrade) with underwater silent exhaust and sound box

- AC dockside connection
- Alternator split charging system
- Remote battery switches controlled from locker in cockpit
- Battery charger for 24v circuits
- Battery charger for 12v circuits
- 12v hand light and cable
- 24v and 12v DC electrical system with full circuit breaker protection
- Two 1800 BTU air compressors
- Six engine batteries 24v circuit
- Four domestic batteries 24v circuit
- Two generator batteries 12v circuit
- AC water heater
- Upgraded oil changing pump
- Genset, main engines, transmittion
- Galvanic isolator

Engine And Mechanical Equipment Underwater Equipment Disclaimer Delete Checked

## 20kW 60Hz genset (upgrade) with underwater silent exhaust and sound box

- AC dockside connection
- Alternator split charging system
- Remote battery switches controlled from locker in cockpit
- Battery charger for 24v circuits
- Battery charger for 12v circuits
- 12v hand light and cable
- 24v and 12v DC electrical system with full circuit breaker protection
- Two 1800 BTU air compressors
- Six engine batteries 24v circuit
- Four domestic batteries 24v circuit
- Two generator batteries 12v circuit
- AC water heater
- AC sockets throughout the boat
- Upgraded oil changing pump
- Genset, main engines, transmittion
- Galvanic isolator

## 20kW 60Hz genset (upgrade) with underwater silent exhaust and sound box

- AC dockside connection
- Alternator split charging system
- Remote battery switches controlled from locker in cockpit
- Battery charger for 24v circuits
- Battery charger for 12v circuits
- 12v hand light and cable
- 24v and 12v DC electrical system with full circuit breaker protection
- Two 1800 BTU air compressors
- Six engine batteries 24v circuit
- Four domestic batteries 24v circuit
- Two generator batteries 12v circuit
- AC water heater
- AC sockets throughout the boat
- Upgraded oil changing pump
- Genset, main engines, transmittion
- Galvanic isolator

---

## Engine and Mechanical Equipment

---

- Twin x 1100 hp diesels IB MAN 1100 CRM
- Bow thruster & stern thruster upgraded
- Soundproofing throughout engine room
- Automatic fire extinguishers
- Engine room and forward bilge flood alarms
- Twin automatic bilge pumps
- Twin automatic flood pumps
- Four extractor fans 24v
- Manual bilge pump
- Separate fuel filters/water separators upgraded
- Twin aluminum cross-balanced fuel tanks with electric sending unit
- Alge-X fuel cleaning system
- Hydraulic power steering engine driven pump
- 24 V vacuum toilet system
- Upgraded 80 gallon black water tank
- Aluminum freshwater tank with electric sending unit
- Hot water tank
- Washer/dryer
- Fully automatic water maker

---

## Underwater Equipment

---

- Direct shaft drive through half tunnels
- 5-blade NAB bronze propellers
- Twin 60mm stainless steel Temet 25 shafts
- Seacocks on all underwater fittings
- Bow thruster 24 V
- Dripless shaft logs
- High performance bronze rudders and struts
- Seawater strainers-two for main engines and 1 for generator
- Full cathodic bonding system to zinc anodes
- Stainless steel hydraulic trim tabs 24 V

## Exclusions

---

Owner's personal belongings.

## Disclaimer

---

The Company offers the details of this vessel or yacht in good faith but cannot guarantee or warrant the accuracy of this information nor warrant the condition of the vessel. A buyer should instruct his representatives, agents, or his surveyors, to investigate such details as the buyer desires validated. This vessel or yacht is offered subject to prior sale, price change, or withdrawal without notice.



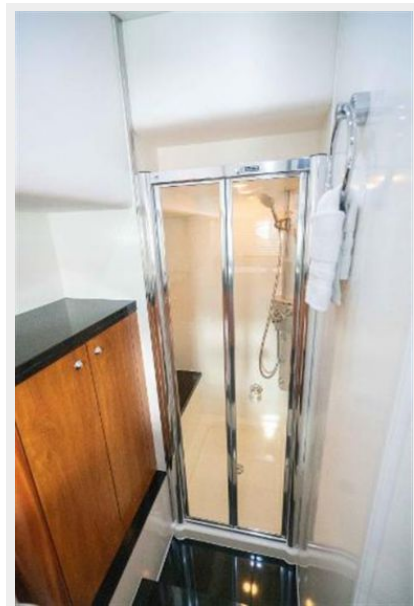
# PHOTOS



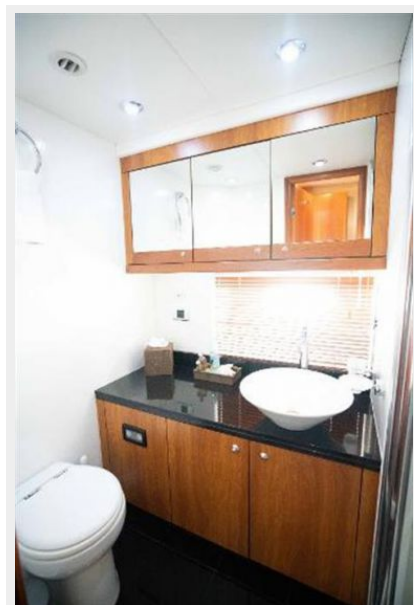














# CONTACTS

---

Andrey Shestakov, leading yacht broker of the sales department of Shestakov Yacht Sales Inc. Shestakov Yacht Sales Inc., the official representative of the Miami/Fort Lauderdale FL headquarters.

## Contact details

---

Email:  
**andrey@shestakovyachtsales.com**

Web: [shestakovyachtsales.com/en/](http://shestakovyachtsales.com/en/)

## Telephones

---

USA: **+1(954)274-4435**

## Office hours

---

Monday – Saturday: **9:00 - 21:00 EDT**

Sunday: **closed**

## Address

---



Harbour Towne Marina, 850 NE 3rd St,  
STE 213, Dania, FL 33004