

## 40 1988 HUNTER LEGEND 40 — HUNTER



**Builder:** HUNTER

**LOA:** 40' 0" (12.19m)

**Year Built:** 1988

**Beam:** 13' 5" (4.09m)

**Model:** Cruising Sailboat

**Price:** PRICE ON APPLICATION

**Location:** United States

Our experienced yacht broker, Andrey Shestakov, will help you choose and buy a yacht that best suits your needs 40 1988 Hunter Legend 40 — HUNTER from our catalogue. Presently, at Shestakov Yacht Sales Inc., we have a wide variety of yachts available on our sale's list. We also work in close contact with all the big yacht manufacturers from all over the world.

If you would like to buy a yacht 40 1988 Hunter Legend 40 — HUNTER or would like help answering any questions concerning purchasing, selling or chartering a yacht, please call +1(954)274-4435

# TABLE OF CONTENTS

TABLE OF CONTENTS	2
SPECIFICATIONS	3
Overview	3
Basic Information	3
Dimensions	3
Speed, Capacities and Weight	3
Accommodations	3
Hull and Deck Information	4
Engine Information	4
DETAILED INFORMATION	5
Accommodations	5
Plumbing	5
Safety	5
Galley	5
Electronics and Navigation	6
Sails and Rigging	6
Mechanical and Electrical	6
Hull, Deck and Cockpit	7
Exclusions	7
Disclaimer	7
PHOTOS	9
CONTACTS	15
Contact details	15
Telephones	15
Office hours	15
Address	15

---

# SPECIFICATIONS

---

## Overview

---

Hunter's have always offered a LOT of boat for the money, and the 40' Legend is no exception, offering a tremendous amount of light and space throughout the boat. There is a large queen berth in aft master stateroom with ensuite head and shower, along with guest stateroom with V-berth and seperate head, as well as a roomy cockpit and a well-designed sail plan topside.

Great cruiser racer, ready to go. Sails in good shape, engine runs great. Would make great live aboard or Cruiser. Call before it's gone.

## Basic Information

---

**Category:** Cruising Sailboat

**Model Year:** 1988

**Year Built:** 1988

**Country:** United States

## Dimensions

---

**LOA:** 40' 0" (12.19m)

**LWL:** 32' 6" (9.91m)

**Beam:** 13' 5" (4.09m)

## Speed, Capacities and Weight

---

**Water Capacity:** 105 Gallons

**Holding Tank:** 35 Gallons

**Fuel Capacity:** 40 Gallons

## Accommodations

---

**Total Cabins:** 2

**Total Heads:** 2

---

## Hull and Deck Information

---

**Hull Material:** Fiberglass

**Hull Finish:** Aluminum

---

## Engine Information

---

**Engines:** 1

**Manufacturer:** Yanmar

**Model:** 4JHE

**Engine Type:** Inboard

**Fuel Type:** Diesel

---

# DETAILED INFORMATION

---

## Accommodations

---

The interior layout is warm and inviting. A nice sized U-shaped galley to starboard with navigation station to port. Settee seating both port and starboard with a larger centerline table with folding leaves.

Owners Stateroom aft with centerline queen berth and en suite head and shower.

Guest stateroom forward with V-berth and generous storage lockers. A day head is located forward.

- Two Cabin Layout
- Two Marine Heads with Jabsco Toilets (2015)
- Teak Cabinetry with Solid Wood Trim
- Teak and Holley Cabin Soles
- Overhead Lighting
- Overhead Opening Hatches
- Tommy Bahama Upholstery on Salon Settees and V-berth

## Plumbing

---

- New Marine Air Conditioner
- Hot and Cold Pressure Water System
- Water Heater
- (2) Jabsco Marine Toilets (2015)
- Macerator
- Shower with Sump

## Safety

---

- (2) Fire Extinguishers
- Manual and Automatic Bilge Pump
- Life Jackets
- Manuals

## Galley

---

- U-Shaped Galley to Starboard
- Double Stainless Steel Sink
- Hot/Cold Pressure Water
- Raw Water Foot Pump
- Seaward 3 Burner Propane Stove w/ Oven Gimballed
- Dometic Refrigerator/Freezer
- Generous Cabinet Storage and Counter Space

---

## Electronics and Navigation

---

- Raymarine ST6002 Auto Pilot at Helm
- Raymarine C70 Chart Plotter/Radar at Helm
- Ritchie Compass at Helm
- Horizon Speed
- Horizon Depth
- ComNav NX2 Wind Data Instrument
- ICOM-M302 VHF Radio at Nav. Station
- Visio 13" Flatscreen TV
- JVC KD-G720 Stereo w/Speakers in Salon and Cockpit
- JVC CD Changer 12 Disc

---

## Sails and Rigging

---

- Sloop Rigged
- US Spars Keel-Stepped Mast with Folding Steps (2005)
- Hydraulic Boom Vang
- Standing Rigging Replaced in 2005
- Running Rigging Replaced in 2005
- Schaefer Mainsail Traveller
- Pro Furl Genoa Roller Furling
- In Mast Roller Furling
- Mack Sails Mainsail (2005)
- 125% Genoa (2005)
- Whisker Pole
- All lines lead aft to cockpit through line clutches
- (2) Primary Anderson #46 Self Tailing Two Speed Winches (2005)
- (2) Barlow #28 Self Tailing Cockpit Winches

---

## Mechanical and Electrical

---

- Yanmar 4JHE, 44HP engine, hours unknown
- 120 Volt Distribution Panel
- 12 Volt Distribution Panel
- (4) Recently Replaced Group 31 Batteries
- Perko Battery Selector Switch
- HDM 30 Amp Battery Charger
- Siemens 75 Watt Solar Panel
- Air X Wind Generator
- 30 Amp Outlet and Power Cord
- Plumbed and Wired for a Water Maker

---

## Hull, Deck and Cockpit

---

- New Bottom Paint
- New Dodger Eisenglass
- Bimini Top
- Pedestal Steering with Nav Pod housing for Instruments
- Teak Slats in Cockpit Floor for excellent drainage
- Manual Bilge Pump
- Propane Locker
- Double Life lines with Stainless Steel Stanchions
- Slotted Aluminum Toe Rail
- Sugar Scoop Transom
- 2011 Achilles Dinghy w/ 9.9 hp Yamaha
- Dinghy Davits
- Lines and Fenders
- LED Running Lights
- Lewmar Electric Anchor Windlass (2007)
- 55# Mantus Anchor w/ Chain and Rode Combo
- Stainless Steel Bow Pulpit with Roller

---

## Exclusions

---

Owner's personal belongings.

---

## Disclaimer

---

The Company offers the details of this vessel or yacht in good faith but cannot guarantee or warrant the accuracy of this information nor warrant the condition of the vessel. A buyer should instruct his representatives, agents, or his surveyors, to investigate such details as the buyer

desires validated. This vessel or yacht is offered subject to prior sale, price change, or withdrawal without notice.

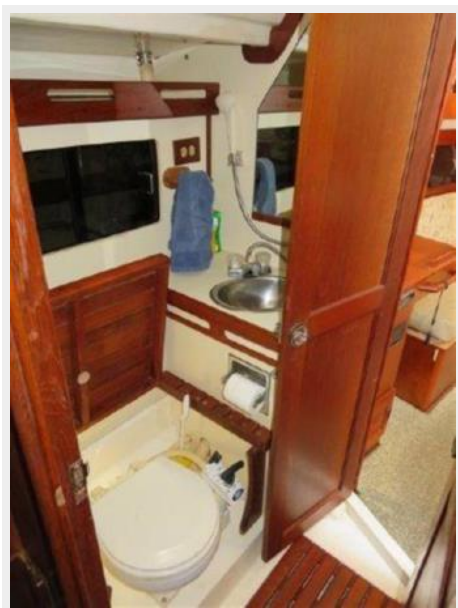


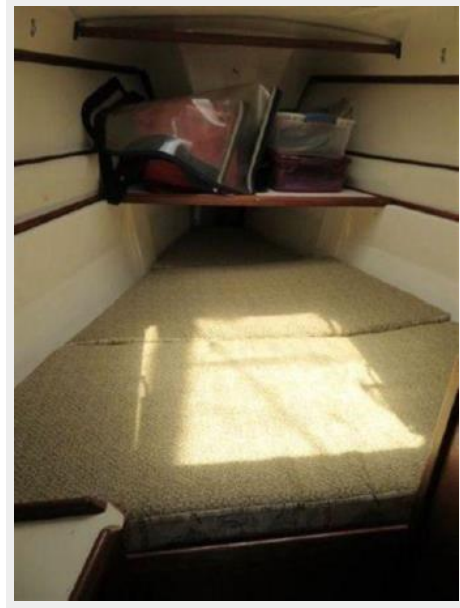
# PHOTOS













# CONTACTS

---

Andrey Shestakov, leading yacht broker of the sales department of Shestakov Yacht Sales Inc. Shestakov Yacht Sales Inc., the official representative of the Miami/Fort Lauderdale FL headquarters.

## Contact details

---

Email: [andrey@shestakovyachtsales.com](mailto:andrey@shestakovyachtsales.com)

Web: [shestakovyachtsales.com/en/](http://shestakovyachtsales.com/en/)

## Telephones

---

USA: +1(954)274-4435

## Office hours

---

Monday – Saturday: **9:00 - 21:00** EDT

Sunday: **closed**

## Address

---



Harbour Towne Marina, 850 NE 3rd St,  
STE 213, Dania, FL 33004