

AFTER HOURS — REGAL



Builder: REGAL

Year Built: 2005

Model: Cruiser

Price: PRICE ON APPLICATION

Location: United States

LOA: 42' 0" (12.80m)

Beam: 14' 0" (4.27m)

Max Draft: 4' 0" (1.22m)

Cruise Speed: 23 Kts. (26 MPH)

Max Speed: 29 Kts. (33 MPH)

Our experienced yacht broker, Andrey Shestakov, will help you choose and buy a yacht that best suits your needs **After Hours — REGAL** from our catalogue. Presently, at Shestakov Yacht Sales Inc., we have a wide variety of yachts available on our sale's list. We also work in close contact with all the big yacht manufacturers from all over the world.

If you would like to buy a yacht **After Hours — REGAL** or would like help answering any questions concerning purchasing, selling or chartering a yacht, please call **+1(954)274-4435**

TABLE OF CONTENTS

TABLE OF CONTENTS	2
SPECIFICATIONS	4
Overview	4
Basic Information	4
Dimensions	4
Speed, Capacities and Weight	4
Accommodations	4
Hull and Deck Information	5
Engine Information	5
DETAILED INFORMATION	6
Vessel Walkthrough	6
Salon	6
Galley	6
Master Stateroom, Forward	7
Master Head and Shower	7
Mid Cabin	8
Mid Cabin Head	8
Helm	8
Electronics	9
Cockpit	9
Hull and Deck	10
Engine Room and Mechanical	10
Electrical Equipment	10
Exclusions	10
Disclaimer	10
PHOTOS	12
CONTACTS	17
Contact details	17

Telephones	17
Office hours	17
Address	17

SPECIFICATIONS

Overview

2005 42 Regal Commodore "AFTER HOURS"

Basic Information

Category: Cruiser	Sub Category: Express
Model Year: 2005	Year Built: 2005
Country: United States	Vessel Top: Hardtop
Cockpit: Yes	

Dimensions

LOA: 42' 0" (12.80m)	Beam: 14' 0" (4.27m)
Max Draft: 4' 0" (1.22m)	

Speed, Capacities and Weight

Cruise Speed: 23 Kts. (26 MPH)	Max Speed: 29 Kts. (33 MPH)
Displacement: 22000 Pounds	Water Capacity: 100 Gallons
Holding Tank: 45 Gallons	Fuel Capacity: 328 Gallons

Accommodations

Total Cabins: 2	Sleeps: 4
Total Heads: 2	

Hull and Deck Information

Hull Material: Fiberglass	Hull Configuration: Modified V-Hull
Hull Color: Silver	Hull Designer: Regal

Engine Information

Engines: 2	Manufacturer: Volvo
Model: TAMD 75 EDC	Engine Type: Inboard
Fuel Type: Diesel	

DETAILED INFORMATION

Vessel Walkthrough

Going below from the center sliding door you enter the salon area with a sofa/dinette area to port and a galley to starboard. Aft is a stateroom with a double berth and a head with a shower. Forward of the salon area is the master stateroom which features a center line queen berth. There is an en-suite head with shower and more than adequate locker and drawer storage. The interior is high-glossed cherry wood. The upper helm features a curved lounge with table to port directly across from the helm. The helm has an electric double seat and full instrumentation. The helm area also has a molded, non skid passageway through the windshield to the bow cushions for sunning. The aft portion of the cockpit has a full bench seat aft, cockpit shower, easy access to engines for inspection and the aft seat raises for more access to engine room. There swim platform is very big and has mounted chocks to bring a dinghy for extended trips.

Salon

- Carpet
- Leather sofa w/ throw pillows
- Teak hi-lo table
- Toshiba 24" flat screen TV w/ SAT TV
- Samsung Blu-ray player
- Surround sound speakers
- Reading lights
- 12 V plug
- Entertainment center
- Overhead mirror
- Overhead hatch w/ screen
- Overhead lights
- Electrical panel
- Cherry wood interior
- Port holes w/ blinds
- Storage cabinets above to port
- C. O. detector
- Electrical panel
- Marine Air AC
- Electrical outlets
- AC w/ digital controls

Galley

- Corian counter top
- SS sink w/ faucet
- Cherry wood cabinetry
- Teak & holly floor
- Drawer storage
- Cabinets storage above and below counter
- Tappan SS microwave oven
- Kenyon 2 Burner stove top w/ stowaway Corian cover
- Nova Kool refrigerator & freezer
- Port hole w/ blinds
- Electrical outlets
- Liquor storage cabinet

Master Stateroom, Forward

- Queen island bed
- Designer bedding and pillows
- Cherry wood laminate cabinetry
- Storage drawers below bed
- Hanging lockers P & S
- Mirrored rope locker in forward bulkhead
- Port holes w/ curtains
- Overhead hatch w/ cover
- Privacy sliding door
- Overhead lights
- Reading lights
- C.O. detector
- Samsung 32" flat screen
- Carpet
- Electrical outlets
- Marine Air AC w/ digital controls
- Ensuite head

Master Head and Shower

- Sealand Vacu Flush head
- Corian vanity counter w/ SS molded sink
- Port hole
- Overhead hatch
- Overheads lights
- Mirrored medicine cabinets
- Electrical outlet

- Drain for shower
- Shower w/ bench seat w/ SS wand/ handrail
- Towel rack
- Exhaust fan

Mid Cabin

- Twin side by side berths w/ bedding & pillows
- Splendide combo washer/dryer
- Night stand w/ storage
- Carpet
- Cherry wood laminate cabinetry
- Mirrored aft bulkhead w/ storage
- Reading lights
- Sliding privacy door
- Drawers

Mid Cabin Head

- Vacu Flush head behind private door
- Vanity counter w/ molded sink in common area of stateroom
- Mirrored cabinet
- Electrical outlet
- Drain in wet head
- Shower w/ wand
- Towel rack
- Exhaust fan

Helm

- Double helm seat-electric
- Acrylic sliding salon door w/ screen
- Cup holders
- Bow thruster
- AC vent
- Full instrumentation
- Danforth compass
- Raymarine electronics package
- Tilt wheel
- Wrap around windshield w/ vent
- Molded steps through walk through windshield to bow

- Curved settee to port with table
- Canvas enclosure
- Volvo electronic single lever shifters
- Rocker switches
- Bennett trim tabs
- Spotlight remote
- Fireboy remote
- Stereo remote
- SS foot rest
- Kenwood speakers
- 12V plug
- High water alarm
- Bar area behind helm area w/ SS sink and storage below
- Factory hard top

Electronics

- Raymarine Hybrid Touch radar w/ dome antenna
- Raymarine Hybrid Touch chart plotter
- Raymarine ST6001 Smartpilot
- Icom IC-M504 VHF radio
- Raymarine ST60 tridata

Cockpit

- Factory hard top w/ radar arch & speakers
- Partial canvas enclosure
- Curved seating w/ storage
- Sink w/ storage below
- BBQ grill
- Remote stereo head
- Aft bench seat
- Swim ladder
- Chocks for dinghy
- Cockpit cover
- Transom shower
- Transom gates
- Dual 30 amp shore cords w/ Glendinning cable masters
- Courtesy lights
- Dockside water connection

Hull and Deck

- Heavy duty windshield w/ enclosure
- Molded large swim platform
- SS bow rail
- Windlass
- Trim tabs
- Heavy duty cleats
- Swim ladder
- Storage locker on aft platform
- Sun pad on bow
- ACR spotlight w/ canvas cover

Engine Room and Mechanical

- Twin Volvo TAMD 75P/EDC (553 hrs)
- V-drives
- Kohler 8.0 kW Diesel generator w/ sound shield
- Oil change system
- Battery charger
- Dripless shaft
- Overhead lighting
- AC compressor
- Engine room blower

Electrical Equipment

- Kohler 8.0 kW Diesel generator
- Battery charger
- Battery switches
- Electrical panel in salon
- Batteries
- Twin 30 amp shore cords

Exclusions

Owner's personal belongings.

Disclaimer

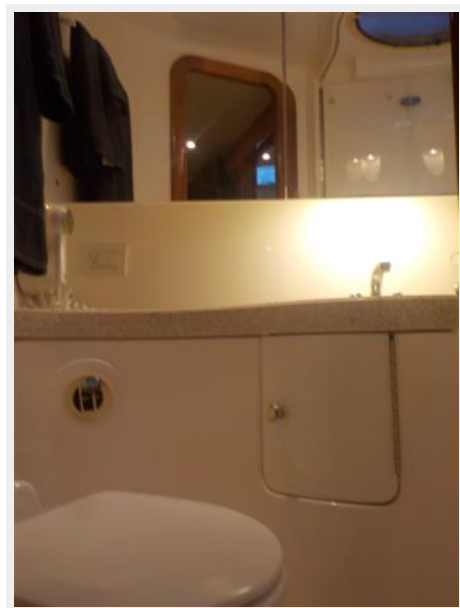
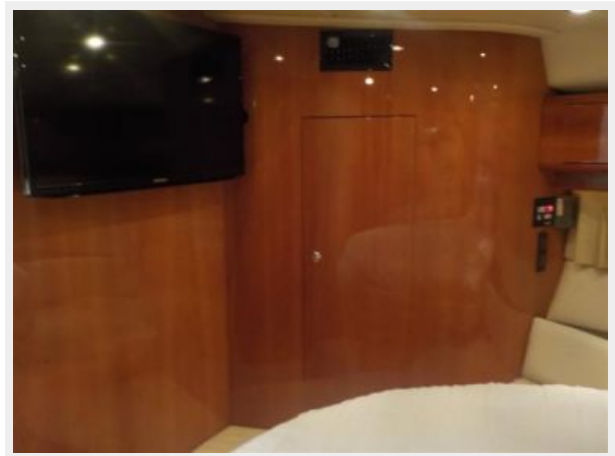
The Company offers the details of this vessel or yacht in good faith but cannot guarantee or

warrant the accuracy of this information nor warrant the condition of the vessel. A buyer should instruct his representatives, agents, or his surveyors, to investigate such details as the buyer desires validated. This vessel or yacht is offered subject to prior sale, price change, or withdrawal without notice.

PHOTOS











CONTACTS

Andrey Shestakov, leading yacht broker of the sales department of Shestakov Yacht Sales Inc. Shestakov Yacht Sales Inc., the official representative of the Miami/Fort Lauderdale FL headquarters.

Contact details

Email: **andrey@shestakovyachtsales.com**

Web: shestakovyachtsales.com/en/

Telephones

USA: **+1(954)274-4435**

Office hours

Monday – Saturday: **9:00 - 21:00 EDT**

Sunday: **closed**

Address



Harbour Towne Marina, 850 NE 3rd St,
STE 213, Dania, FL 33004