

DIVA — ALAJUELA YACHT CORP



Судостроитель:

ALAJUELA YACHT CORP

Год постройки: 1977

Модель: Cutter

Цена: ЦЕНА ЯХТЫ ПО ЗАПРОСУ

Местонахождение: United States

Длина общая: 38' 0" (11.58m)

Ширина: 11' 6" (3.51m)

Мин. осадка: 5' 7" (1.70m)

Макс. осадка: 5' 10" (1.78m)

Крейс. скорость: 6 Kts. (7 MPH)

Макс. скорость: 7 Kts. (8 MPH)

Купить Diva — ALAJUELA YACHT CORP а также выбрать подходящую вам яхту из нашего каталога яхт вам поможет опытный яхтенный брокер Андрей Шестаков. На сегодняшний день компания Shestakov Yacht Sales Inc. имеет большое количество яхт в собственном списке продаж, а также тесно сотрудничает со всеми крупными яхтенными производителями по всему миру.

Для того чтобы купить яхту Diva — ALAJUELA YACHT CORP а также проконсультироваться по любому вопросу связанному с покупкой, продажей, чартером яхт позвоните по телефону **+7(918)465-66-44**.

ОГЛАВЛЕНИЕ

ОГЛАВЛЕНИЕ	2
ХАРАКТЕРИСТИКИ	6
Обзор	6
Основная информация	8
Размеры	8
Скорость, вместимость и масса	8
Размещение	8
Корпус и палуба	8
Информация о двигателе	9
ПОДРОБНОЕ ОПИСАНИЕ	10
Accommodations	10
Galley	11
Hull and Deck	11
Electronics and Navigation	12
Sails and Rigging	13
Engine and Mechanical	14
Electrical	14
Safety Equipment	15
Exclusions	15
Исключения	15
Отказ от ответственности	16
ФОТОГРАФИИ	17
Profile_Full Sail_Stbd	17
Profile_Full Sail_Port	17
Aerial View Foredeck	17
Aerial_Hardtop Bimini	17
Aerial View Motoring_Stern	18
Profile_Stern	18

Profile_Anchored_Bow	18
Profile_Anchored_Stbd	18
Underbody_Hauled	18
Profile_Port Bow & Bow Pulpit	18
Profile_Bow & Upgraded Pulpit	19
Profile_Stbd Midships_Painted_2018	19
Profile_Stbd Cabintop Painted_2018	19
Foredeck_Painted_2018	19
Cockpit Cushions & Companionway	19
Cockpit Teak & Storage	19
Cockpit Teak & Companionway	20
Radar & Wind Generator	20
Belaying Board	20
Cockpit View Aft	20
Hardtop Windshield	20
Butterfly Hatch	20
2 Dorades	21
Anchor Roller	21
Bow Pulpit	21
Lewmar 30 ST Winch & Spinnaker Pole	21
Sampson Post	21
Windlass_12V	21
Salon_Forward	22
Salon Looking Aft	22
Salon & Galley_Stbd	22
Salon & Galley Overhead Storage	22
Galley_Aft Stbd	22
Galley_U-Shaped	22
Galley SS Propane Stove	23

Galley Overhead Storage	23
Companionway Ladder & Battery Case Closed	23
Galley_Propane & Fridge Controls	23
Nav Station_Port Aft	24
Nav Station_Port	24
Butterfly Hatch & Hand Rails_Interior	24
Salon_Stbd Aft	24
Salon_Port	24
Salon Table Up_Stbd	24
Salon_Hidden Folding Table	25
Salon Table Down_1 of 2 Leafs	25
Passageway & V-Berth_Forward Port	25
Salon Table Open	25
Head Toilet, Vanity, & Shower	26
Head Vanity & Sink	26
V-Berth	26
V-Berth_Drawers Under	26
V-Berth Cabinetry_Stbd Aft	27
V-Berth Cabinetry_Port Aft	27
V-Berth Hanging Locker	27
Engineroom_Isuzu 56hp Diesel Engine	27
Engine room_Dual Racor Filters	27
Engineroom_Aft View	27
Batteries_Total of 740 Amp Hrs	28
Battery Box_Custom_Closed	28
Freedom 1000 Inverter & Handheld VHF	28
Electrical Panel	28
Electrical & Bilge Switches	29
Adler-Barbour 12V Refrigeration	29

JRC Color 16 mile Radar	29
Radar & Antenna Mast	29
Simrad AP16 Autopilot Computer	29
Sony Stereo	29
Pioneer Stereo Speakers	30
Insulated Hull	30
Bilges_Dry & Accessible	30
Fuel Tank Manifolds	30
Holding Tank	30
Lewmar 30 ST Halyard Winch_Cockpit	30
Lewmar 30 & 44 ST Mainsheet Winches_Cockpit	31
Updated Mast Step with Insulated Spacer	31
Liferaft_6-Person Viking (Needs Re-Certification)	31
Windlass_12V	31
Complete Logs & System Manuals	31
КОНТАКТЫ	32
Контактная информация	32
Телефоны	32
Время работы	32
Адрес	32

ХАРАКТЕРИСТИКИ

Обзор

Diva is a 1977 Alajuela 38 MK I Cutter in above-average condition that has improved with age under the loving care of her knowledgeable and experienced second owners since 2001. This bluewater cruiser is a true ocean voyager with classic styling, sweeping full keel for sea-kindliness and speed at sea, unsurpassed accommodations comfort, and quality built to take you anywhere with timeless unpretentious styling. Designed by Collin Archer and William Atkin and built in California with American Pride (and without the typical Taiwanese quality issues associated with electrical, plumbing, tankage, hull coring, and teak-decking), she is powerful, rugged and enduring.

In a recent book by John Kretschmer, delivery skipper and author he recognized the Alajuela 38 on a very short list of what he called "sailboats for a serious ocean." Kretschmer, who reviews boats for Sail Magazine and whose most recent book "Sailing a Serious Ocean" details why the Alajuela and a dozen other bluewater sailboats warrant the attention of any serious sailor who wants to cruise the oceans of the world. Here are the boats Kretschmer suggests: Contessa 32, Pacific Seacraft 34, Pretorien 35, Cape Dory/Robinhood 36, Valiant/Esprit 37, Prout Snowgoose 37, **Alajuela 38**, Privelege 39, Freya 39, Passport 40, Caliber 40, Baba 40, Hallberg Rassy 42, Taswell 43, Hylas 44, Norseman 447, Beneteau 456, Outbound 44, Hylas 46, Kaufman 47, Tayana 48, Hylas 49, Amel Maramu 53, and the Sundeer 60/64.

Here's what Kretschmer has to say about the Alajuela 38 on his Website: "**Alajuela 38** - *The pedigree of this boat traces an arc through Colin Archer, Wm Atkins, the success of the West Sail 32 and finally through Don Chapman and Alajuela Yachts in S. California. Three things are true about the Alajuela 38, it's beautiful, it's surprisingly fast, it's well loved by a cult following and yes, did I mention it's beautiful? It is. Some have called the A 38 a refined Westsail 32. That's not quite right. Sure it's a double ender but it is a different animal. It's lean and graceful, not stout and pugnacious. Don't get me wrong, I love the Westsail 32, truly, but the Alajuela will sail circles around it. Always interesting boats on the used market - and that's not always a good thing. The kit boats on the market undermine value but that also means that there are some steals out there. So much for not liking full keel boats.*"

Cutter-Rigged with roller furling systems for the headsail and staysail, and a Mack Stack Pack Mainsail system, this bluewater cruiser displaces 27,000 lbs.. **Diva** has a total working sail area of 880 sq. ft.; giving her an impressive sail area to displacement ratio of 15.7, very similar to the Valiant 40, another well-respected performance bluewater cruiser. Following a marine survey that was done in mid-2017, the Sellers remedied all but a few minor recommendations from the experienced and competent marine surveyor; so we do not expect any surprises at **Diva's** next survey.

In addition to all of the inherent built-in bluewater features and renowned qualities of the 38 Alajuela, her owners have made the following thoughtful and practical improvements and

upgrades that make **Diva**, the only Alajuela 38 Cutter you should consider if you plan to use her as a serious extended cruising home. The only major, (really minor) repairs she needs soon include a new cutlass bearing and some minor headliner repairs in the forward cabin area, caused by condensation, not leaks. These are the highlights of some of her notable upgrades, so if you like this short list; you'll love the detailed specs and additional equipment and features you'll find further in this listing:

- Adler-Barbour 12V Super Cold Machine Refrigeration with SS PowerPlate (2017)
- Hull painted w. Awlgrip Oyster White, 6-Coats (2006)
- Decks & Cabintop painted w. Perfection 2-Part Polyurethane (In Progress: 2018)
- Standing Rigging & Vinyl-Coated SS Lifelines Replaced (2006)
- Mast Painted, New SS Mast Base w. Nylon Pad Separator (2006)
- All Mast Fittings were R&R with Nylon Pads for dissimilar metal separation (2006)
- Mack Full-Battened Mainsail, Staysail & 115% Jib (2006)
- Cold molded hardtop Cockpit Enclosure with hinged solid opening windshield (1995)
- ISUZU 56 HP Diesel, (nearly 2X the HP of some Sisterships) (1997)
- Dual Engine Raw Water Intakes on either side of keel
- Dual Racor filters & Fuel Polishing System
- SS Shaft Replaced (2008)
- 120 Amp Powerline Series 23 Alternator, (& Spare)
- Balmar MC 612 Max Charge Regulator
- KISS Wind Generator & Trace C-Series DC Controller
- Heart Interface Freedom 1000W Inverter/Charger
- 740 Amp-hrs of 6V Deep Cycle Batteries & Custom Battery Boxes
- Custom Aluminum Radar & Antenna Arch w. Outboard Motor Hoist
- SSB, Autopilot, 16 mile Radar, VHF Radios, & Laptop Navigation Software
- 1,200 # Powerwinch 12V Windlass w. Chain & Rope Gypsies
- 2 @ 45# CQR Anchors; One with 200' Chain, 2nd w. 250' Rope & Chain Rode
- Large folding Cockpit Table with built in storage
- Upholstered dense foam Cockpit Cushions
- Enlarged Sofas with added bookshelves and cabinet storage instead of Pilot-Berths
- Fold-up Bulkhead-Mounted Dining Table w. drop leaf & Mirrored Enclosure
- Custom Dish Cabinet above Galley forward Countertop
- Refrigeration Box lined with Urethane Foam & Vacuum Insulated Panels (2004)
- Ocean Breeze 6,500 BTU A/C & Heater
- Hull Lined w. Thermal Insulation above water-line
- West Marine 9' Inflatable RIB with a 9.9HP Yamaha 4-Stroke Outboard (2003)

If you are looking for a proven bluewater cruiser outfitted for a couple to easily handle with all the right stuff to ensure safety and comfort, then call today to schedule a personal inspection. This 1977 Alajuela 38 Mark I Cutter will not disappoint you!

Основная информация

Тип судна: Cutter

Подкатегория: Крейсерская яхта

Модельный год: 1977

Год постройки: 1977

Страна: United States

Размеры

Длина общая: 38' 0" (11.58m)

Длина по ватерлинии: 32' 7" (9.93m)

Ширина: 11' 6" (3.51m)

Мин. осадка: 5' 7" (1.70m)

Макс. осадка: 5' 10" (1.78m)

Трапы: 55' 0" (16.76m)

Скорость, вместимость и масса

Крейс. скорость: 6 Kts. (7 MPH)

Макс. скорость: 7 Kts. (8 MPH)

Водоизмещение: 27000 Pounds

Вместимость воды: 40 Gallons

Вместимость сточного бака: 28 Gallons

Объем топливного бака: 110 Gallons

Размещение

Всего кают: 2

Всего коек: 3

Всего ком. состава: 1

Корпус и палуба

Материал корпуса: Fiberglass

Информация о двигателе

Двигатели: 1

Производитель: Isuzu

Модель: C240 2.4L 4-Cylinder

Тип двигателя: Inboard

Тип топлива: Diesel

ПОДРОБНОЕ ОПИСАНИЕ

Accommodations

This 1977 Alajuela 38 Mark I Cutter has significant professionally-done custom features to make her ideally suited for extended bluewater cruising. The current owners have been cruising and living aboard since 2001, constantly making improvements to make their home safe and comfortable. Most noticeable is the cold-molded hardtop Dodger and Bimini, added in 1995, providing shelter and protection from the elements, contributing to an expanded living area as well as to ensure that the companionway area below stays dry and clean. The enclosed cockpit area is spacious, considering the teak cockpit seats are over 6' long with durable removable cushions, a custom storage cabinet aft, and a folding cockpit table. There is a dual set of companionway Teak Hatch-boards, one solid and one with vent openings.

Enter the companionway down a removable teak ladder with 5-steps and built in grab rails and the U-Shaped Galley is to Starboard with plenty of storage below, above and outboard of the counter-tops behind the SS Gimbaled Stove & Oven. A Custom Teak trimmed dish & glassware rack storage cabinet is mounted above the forward section of the Galley and provides a partial separation between the Galley and the Salon area. Behind the removable ladder is the hinged door to access the engine room and a custom Battery Storage Box contains six 6-Volt Batteries plus two additional batteries under the Nav Station Seat totaling 740 Amp-hours. A Freedom 10 Inverter/Charger is conveniently located above the batteries.

Opposite the Galley to Port is the forward-facing Nav Table with storage under and electrical panels and gauges on the outboard wall. The gloss-finished Teak & Holly Floor is $\frac{3}{4}$ " thick, over $\frac{1}{2}$ " plywood throughout the light and bright traditional Herreshoff-style varnished Teak-trimmed white panel interior. There are multiple hatches in the floor providing excellent access to the bilges and tankage below. An Ocean Breeze 6,500 BTU A/C with heat system is vented to the V-Berth and Salon.

Moving forward, a large Teak-trimmed Butterfly Opening Hatch above the center of the Salon, two deck-mounted Dorade vents, plus a total of 8 opening bronze ports with chromed interior surfaces throughout the vessel provide plenty of light and ventilation. The Salon settees were customized to be deeper than the originals by removing the pilot-berths that were originally outboard and above each of the Salon Settees. The result is two wide berths when needed and deep seats for comfort and lounging. In place of the pilot-berths, there are bookshelves and cabinets with varnished teak doors.

Another Custom feature of the Salon is the folding bulkhead-mounted table with one Drop-Leaf and a mirrored hinged cover and light fixture that conceals the table when stored and adds to the spacious ambiance of the Salon. There is additional storage under and behind the Settee cushions. Ceiling-mounted 12V lighting fixtures generously spaced throughout this vessel provide excellent night lighting and there is a wall-mounted flat-screen TV & Sony Stereo with Pioneer Speakers in the Salon. To compensate for the shorter Starboard Settee, there is a cut-

out in the Galley/Salon counter to expand the length of the settee as a berth, or for extra storage as shown in the photo.

Forward is a passageway with the private Head to Starboard with a large hinged waterproof seat that covers the Toilet when showering. The vanity, sink with pressure H/C faucet & separate shower controls has plenty of storage above and below the counter. Opposite the Head is a hanging locker, and additional cabinetry and drawers.

Further forward is the spacious V-Berth with a teak-trimmed Opening Deck Hatch, cabinet drawers under and additional storage cabinets to Starboard. The hull walls are lined with varnished teak strips and two quiet and efficient Hella 12V fans are mounted forward. Two louvered varnished Teak doors provide access forward to the electrical junction box for the Windlass and access to deck fittings when necessary. There is additional storage under the V-berth.

Galley

The well-equipped U-Shaped Galley of this bluewater 1977 Alajuela 38 Cutter features:

- Adler-Barbour Super Cold Machine 12V Refrigeration with PowerPlate (2004)
- Refrigeration box rebuilt in 2004 with urethane foam and vacuum-insulated panels
- External Refrigeration thermostat and thermometer
- Force 10 SS 2-Burner Gimballed Stove & Oven (1995)
- Trident Propane Control & Leak Detection System (2005)
- Two 20-pound aluminum propane tanks in ventilated stern lazarette with gauges & Marshal Regulator (2007)
- Deep SS sink in galley with H/C Pressure water plus fresh and saltwater foot pumps
- Custom overhead Dish cabinet provides convenient storage & separation between galley and salon
- SS BBQ Propane Grill on Stern Rail

Hull and Deck

The Hull of this 38 Alajuela Cutter was made in 1977 of hand-laid up solid fiberglass that is between ½' and 1" thick. 10,000 pounds of lead provides most of the ballast deep in the full keel, supplemented by fuel, water and waste tanks that are all below the cabin sole in the bilge.

The Cold-molded hardtop with solid opening hinged Plexi windshield was built in 1995. It adds comfort and styling with traditional good looks. There is no need to stand your watch in foul weather gear and you can enjoy expanded cockpit living in all climates, protection from some wind and salt spray, and increased privacy at anchor.

Eight opening trademark bronze ports; large 24"x24" forward deck hatch and large butterfly teak hatches offer cool comfort in the tropics. The Companionway has two sets of Teak Hatch Boards, one ventilated and one solid. Other features of the Hull & Deck are:

- Uncluttered Foredeck with 5" square Samson post and broad 20" walk-around the side decks of gel coated non-skid; comfortable and safe
- Hull professionally peeled and two layers of 22 ounce bi-axial fabric applied using West System epoxy, followed with nine layers of West System epoxy with aluminum barrier additive; blister-free since 1996
- Awlgrip, 6 coats of Oyster White in 2005
- Hempel Ablative Bottom Paint, 5 coats, 12/2013; (Diver cleans bottom every 4-6 weeks)
- Decks & Cabin-top coated with two-part polyurethane Perfection paint, 2006
- Convenient outboard motor lifting arm/purchase at Port quarter
- 6-foot teak bow pulpit with stainless steel guardrail atop 7' mahogany bowsprit (2008)
- 1200-pound PowerWinch windlass with covered foot switch; line & chain gypsies
- Two 45-pound CQR anchors; starboard, 200' or 250' galvanized 5/8" BBB chain; port, 200' 7/8" line with 50' 5/8" BBB chain
- SS Vinyl-covered Lifelines (2006) & sturdy stainless steel stanchions
- Aqua Signal navigation lights; spreader lights
- Aluminum arch at stern holds radar, wind generator, GPS antennas, WIFI antenna and outboard motor lift
- Two outboard motor railing mounts
- Three 12V bilge pumps: forward bilge pocket 1500 gph; aft bilge pocket 3700 gph, and a portable 4000 gph pump with 15' cable with battery clips
- Manual pump operated from cockpit with suction hose to aft bilge
- Two engine raw water suctions, either side of keel, cross-connected to engine supply strainer
- Cockpit fresh water shower head/hose
- Rudder-mounted bronze boarding steps
- Two Teak & SS Dorades on Deck above Salon
- Eight opening trademark bronze ports; large forward and large butterfly teak hatches offer cool comfort in the tropics
- Interior of Bronze Ports are Chromed

Electronics and Navigation

Bluewater-equipped, this 1977 Alajuela 38 Cutter has integrated navigation equipment and systems. Navigation and Entertainment Equipment includes:

- Icom IC-M802 MF/HF SSB Marine Transceiver w. DSC & Icom AT-140 HF Automatic Antenna Tuner
- Pactor PTC II Modem
- Icom IC-M32 portable VHF Marine Transceiver

- Davis Constellation cockpit compass
- Simrad AP16 Autopilot:with heavy duty hydraulic ram
- GPS: Vertex/Standard Horizon CP180 color G; connected to Chartplotter/SSB/VHF;
- No-Strike Ion Dissipator lightning protection to two 4-foot long pure copper grounding plates
- VHF, Standard Horizon Explorer with GPS input for DSC emergency broadcast function & RAM MIC
- JRC LCD 16-mile radar, 1000 Mk II
- Depth Displays: Datamarine S400DL and Standard Horizon DS41
- Horizon SL45 Speed log
- Sony AM/FM/CD Stereo system w/ Sirius FM receiver;
- Pioneer Stereo Speakers in stateroom, salon & cockpit with location selector switch
- 22" LCD TV/DVD 22LV505 Combo on telescoping wall bracket; overhead-mounted RCA ANT1450 Amplified Flat Multi-Directional Indoor Antenna
- Dell computer on disappearing shelf at navigation station; connection to electronic charting; directional and omni-directional WiFi antennas

Sails and Rigging

Cautious and prudent experienced mariners, the current owners replaced the standing rigging, 3 primary sails, and lifelines in 2006, and have successfully avoided stressing themselves or their beloved Diva by carefully picking their weather windows for major passages. Therefore, these critical items do not show their age and should provide many more years of cruising to the next stewards of this experienced passage-maker. This 1977 Alajuela 38 Mark I Cutter has the following sail inventory and sail-handling equipment:

- Mainsail by Mack— Full Battened with a Mack Stack Pack storage system (2006)
- 115% Roller Furling Genoa by Mack (2006)
- Staysail by Mack – Roller Furling (2006)
- Dual Famet Reef Furlers
- Storm Trysail with dedicated track on Mast
- Aluminum Mast & Boom painted with Perfection 2-part Polyurethane Paint (2006)
- New stainless steel mast step; full dissimilar metal separation with nylon pad (2006)
- All Mast hardware R&R with nylon pads for dissimilar metal protection (2006)
- 13' Aluminum Whisker Pole
- All new 3/8" Diameter 316 stainless standing rigging, 2006
- Lewmar 48 ST Primary Winches
- Lewmar 2 @ 30 ST Halyard & Mainsheet Winches
- Lewmar 44 Mainsheet Winch
- Mainsheet adjustable Traveler Forward of Dodger
- Genoa tracks with adjustable Blocks on side decks
- Staysail tracks with adjustable Blocks on cabin-top
- Boom Gallows on Bimini Hardtop

Engine and Mechanical

Although the hull, rigging and sails of a bluewater cruiser needs to be able to handle all that the sea can throw at you; a powerful and reliable engine is also necessary to get you safely into port when the winds, seas and tides are against you. This 1977 Alajuela 38 Mark I Cutter has been re-powered with a 56 HP Diesel engine; nearly twice the HP of some of the others on the market today. Following are the Mechanical features of **Diva**:

- ISUZU C240 (a.k.a. QD60) Diesel; 4 cylinder, 4 cycle freshwater-cooled, 2.4 liter, 56 bhp; serial # 679591; 7600 engine hours; spare raw water hoses; spare injector (1997)
- Transmission, Borg Warner Velvet Drive Marine, assembly number AS 14-71 CR, speed ratio 2.57:1; spare flexplate; shop inspected 2009 (1997)
- Fuel system: all USCG-approved hoses; two fuel tanks, 55 gal each; manifold to take suction on either tank and return to either tank; engine bypass manifold; ability to "polish" fuel in either tank using manifolds, engine fuel feed pump and duplex Racor filter system
- Fuel filter for engine feed: Racor 75/500MAX with polymer collection bowls, marine heat shields and drain fittings with shut-off valves and plugs
- Prop: 19 inch four blade fixed, left handed
- Shaft: 1-1/4" stainless steel, (2008)
- Muffler: Vernalift wet marine exhaust
- Exhaust vacuum breaker: Vetus AirVent V, (2012)
- Engine control: Morse marine model MV-2
- Engine room exhaust fan Jabsco 12V in-line blower
- Engine raw water cooler and transmission oil cooler from Sen-Dur, Fort Lauderdale; spare cooler for each
- Force 10 SS 6-gallon Hot Water Heater; engine & 110V & heated by Wind Generator excess power

Electrical

The Electrical system of this 1977 Alajuela 38 Cutter has been optimized for self-sufficiency when off-the-grid enjoying the peace and tranquility of being offshore or anchored out. **Diva's** Electrical system features:

- KISS Wind Generator
- Trace C-Series Multi-function DC Controller: step-type battery charger and excess-power-to-potable-water heater element
- 740 amp-hrs, deep cycle, flooded "golf-cart" 12 V battery system; selector switch to optional start battery (start battery, not included)
- Adler Barber Super Cold Machine by Waeco USA (now Dometic); with PowerPlate (2004)
- Ocean Breeze Air Conditioner; Model OB6CH, 6500 Btu, with 120V, 11,000 BTU Heating element; ducted separately to stateroom & saloon; raw water cooling pump
- Heart Interface Freedom 10, 1000-watt modified sine wave inverter/50-amp charger, 1993

- Xantrex LinkLite battery monitoring system/gauge
- 30 amp dockside hook up with two 25-foot cables and 30-to-50 amp pigtail
- 120 amp Powerline Series 23 Engine-Driven Alternator and spare
- Balmar MC 612 Max Charge Regulator
- Force 10 SS 6-gallon hot water heater (engine, 110V & Wind Generator) (2004)
- 110V Outlets throughout Interior
- 12V Lighting
- Three 12V bilge pumps: forward bilge pocket 1500 gph; aft bilge pocket 3700 gph and a Portable 4000 gph pump with a 15' cable & battery clips capable of reaching all bilge areas.
- Manual pump with hose to aft bilge pocket with handle lever operated from cockpit

Safety Equipment

- Radar Reflector: Davis Echomaster
- Life Raft: Viking 6UKL six person, vacuum-packed liferaft; mounted atop cockpit hardtop; New 4/2003, recertified 12/2007 (Needs Re-Certification)
- Carbon monoxide detector: Capital XINTEX, model CMD-3M; installed (2005)
- Emergency Position Indicating Radio Beacon (EPIRB): ACR GlobalFix, manual deployment, 406 MHz with integral GPS
- Trident Marine LP Gas Control System, Leak Detection System with Detection Upgrade Kit #1300-7716, (2005)
- Two 20-pound aluminum Propane Tanks in ventilated stern lazarette; tanks connected to piping via regulator Marshall model 254-00 regulator with changeover lever and separate tank pressure gauges, (2007)

Exclusions

Excluded are personal and other items found onboard during inspection or shown in photos on Central Listing Agent's Website that are not specifically described in text of the Listing Specifications. However, all safety items that are onboard during inspections that are required by the USCG, as well as a minimum number of dock lines, fenders, and boat hooks to safely operate and dock the vessel are included, whether identified in the Web Description or not.

Исключения

При продаже яхты исключаются личные вещи владельца.

Отказ от ответственности

Компания предоставляет описание судна или яхты добросовестно, но не может гарантировать точность этой информации, а также не ручается за техническое состояние. Покупатель должен проинструктировать своих агентов или оценщиков исследовать представленную информацию более подробно, по собственному желанию. Продажа судна или яхты, изменение цены или снятие с продажи будет происходить без предварительного уведомления.

ФОТОГРАФИИ

Profile_Full Sail_Port



Profile_Full Sail_Stbd



Aerial View Foredeck



Aerial_Hardtop Bimini



Aerial View Motoring_Stern



Profile_Stern



Profile_Anchored_Bow



Profile_Anchored_Stbd



Underbody_Hauled



Profile_Port Bow & Bow Pulpit



Profile_Bow & Upgraded Pulpit



Profile_Stbd Midships_Painted_2018



Profile_Stbd Cabintop Painted_2018



Foredeck_Painted_2018



Cockpit Cushions & Companionway



Cockpit Teak & Storage



Cockpit Teak & Companionway



Radar & Wind Generator



Belaying Board



Cockpit View Aft



Hardtop Windshield



Butterfly Hatch



2 Dorades



Anchor Roller



Bow Pulpit



Lewmar 30 ST Winch & Spinnaker Pole



Sampson Post



Windlass_12V



Salon_Forward



Salon Looking Aft



Salon & Galley_Stbd



Salon & Galley Overhead Storage



Galley_Aft Stbd



Galley_U-Shaped



Galley SS Propane Stove



Galley Overhead Storage



Companionway Ladder & Battery Case Closed



Galley Propane & Fridge Controls



Nav Station_Port Aft



Nav Station_Port



Butterfly Hatch & Hand Rails_Interior



Salon_Stbd Aft



Salon_Port



Salon Table Up_Stbd



Salon_Hidden Folding Table



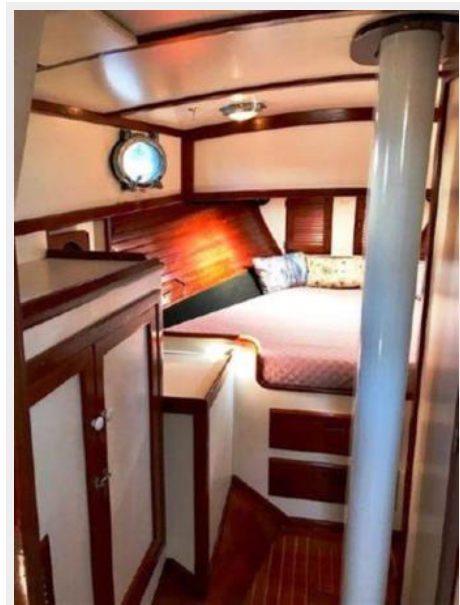
Salon Table Down_1 of 2 Leafs



Salon Table Open



Passageway & V-Berth_Forward Port



Head Vanity & Sink



Head Toilet, Vanity, & Shower



V-Berth



V-Berth_Drawers Under



V-Berth Cabinetry_Stbd Aft



V-Berth Cabinetry_Port Aft



V-Berth Hanging Locker



Engineroom_Isuzu 56hp Diesel Engine



Engine room_Dual Racor Filters



Engineroom_Aft View



Batteries_Total of 740 Amp Hrs



Battery Box_Custom_Closed



Freedom 1000 Inverter & Handheld VHF

Electrical Panel



Electrical & Bilge Switches

Adler-Barbour 12V Refrigeration



JRC Color 16 mile Radar



Radar & Antenna Mast



Simrad AP16 Autopilot Computer



Sony Stereo



Pioneer Stereo Speakers



Insulated Hull



Bilges_Dry & Accessible



Fuel Tank Manifolds



Holding Tank



Lewmar 30 ST Halyard Winch_Cockpit



Lewmar 30 & 44 ST Mainsheet Winches_Cockpit



Updated Mast Step with Insulated Spacer



Liferaft_6-Person Viking (Needs Re-Certification)



Windlass_12V



Complete Logs & System Manuals



КОНТАКТЫ

Андрей Шестаков (Andrey Shestakov) – ведущий яхтенный брокер отдела продаж яхт и судов компании Shestakov Yacht Sales Inc. Официальный представитель Shestakov Yacht Sales Inc. для русскоговорящих клиентов в центральном офисе компании в Майами/Форт Лодердейл/Флорида/США.

Контактная информация

Email: andrey@shestakovyachtsales.com

Web: shestakovyachtsales.com

Телефоны

Краснодарский край: **+7(918)465-66-44**

США, Майами, Флорида: **+1(954)274-4435**

Время работы

Понедельник – Суббота: **9:00 - 21:00**
EDT

Воскресенье: **Закрыто**

Адрес



Harbour Towne Marina, 850 NE 3rd St,
STE 213, Dania, FL 33004