

SOUND WAVES — HATTERAS



Builder: HATTERAS

Year Built: 1998

Model: Motor Yacht

Price: PRICE ON APPLICATION

Location: United States

LOA: 74' 0" (22.56m)

Beam: 18' 6" (5.64m)

Min Draft: 5' 4" (1.63m)

Max Draft: 5' 6" (1.68m)

Cruise Speed: 23 Kts. (26 MPH)

Max Speed: 27 Kts. (31 MPH)

Our experienced yacht broker, Andrey Shestakov, will help you choose and buy a yacht that best suits your needs **Sound Waves — HATTERAS** from our catalogue. Presently, at Shestakov Yacht Sales Inc., we have a wide variety of yachts available on our sale's list. We also work in close contact with all the big yacht manufacturers from all over the world.

If you would like to buy a yacht **Sound Waves — HATTERAS** or would like help answering any questions concerning purchasing, selling or chartering a yacht, please call **+1(954)274-4435**

TABLE OF CONTENTS

TABLE OF CONTENTS	2
SPECIFICATIONS	4
Overview	4
Basic Information	4
Dimensions	4
Speed, Capacities and Weight	4
Accommodations	5
Hull and Deck Information	5
Engine Information	5
DETAILED INFORMATION	6
Walkthrough	6
Salon	6
Master Stateroom	6
VIP	7
Forward Stateroom	7
Galley	7
Pilothouse	8
Electronics	8
Audio & Visual Equipment	8
Electrical Equipment	9
Deck and Hull	9
Mechanical	10
Crew Stateroom	11
Safety	11
Exclusions	11
Disclaimer	11
PHOTOS	12
IMG_1936	12

IMG_1863	12
IMG_1840	12
IMG_1911	12
IMG_1866	12
IMG_1886	12
IMG_1874	13
CONTACTS	28
Contact details	28
Telephones	28
Office hours	28
Address	28

SPECIFICATIONS

Overview

Talk about a diamond in the rough! This Original Owner vessel spent her first 17 years in the Great Lakes before being moved to Florida to sell in 2017. Popular 4 stateroom layout with his and her head.

Key features include: excellent paint, all new galley appliances (2016), New 55" Samsung 4K HD TVs, new HD dome (2016), custom oversize rails, 10 Extreme Beam underwater lights, Great Loop bridge clearance, Sea Recovery water maker, Dual PTOs for the hydraulics driven by main engines, and much more... Trades Considered!

Basic Information

Category: Motor Yacht

Model Year: 1998

Year Built: 1998

Country: United States

Vessel Top: Bimini Top

Fly Bridge: Yes

Dimensions

LOA: 74' 0" (22.56m)

Beam: 18' 6" (5.64m)

Min Draft: 5' 4" (1.63m)

Max Draft: 5' 6" (1.68m)

Clearance: 28' 0" (8.53m)

Speed, Capacities and Weight

Cruise Speed: 23 Kts. (26 MPH)

Max Speed: 27 Kts. (31 MPH)

Displacement: 127000 Pounds

Water Capacity: 250 Gallons

Holding Tank: 150 Gallons

Fuel Capacity: 1600 Gallons

Accommodations

Total Cabins: 4

Total Heads: 4

Hull and Deck Information

Hull Material: Fiberglass

Engine Information

Engines: 2

Manufacturer: Caterpillar

Model: 3412

Engine Type: Inboard

Fuel Type: Diesel

DETAILED INFORMATION

Walkthrough

Sound Waves may be boarded from either the aft deck or the side deck boarding gate. The excellent condition of the decks and cleanliness of the vessel give an amazing first impression. Entering the main salon, the carpet, upholstery, and cabinetry are in like new condition. Forward of the Salon is the formal dining area and then the Galley. Across from the galley is a leather dinette. Forward from the galley is the pilot house. The pilot house has exits to starboard and port to the side decks, stairs up to the fly bridge and stairs down to the guest accommodations. The forward guest accommodations offer three staterooms and three heads. Each stateroom and head is in exceptional condition and beautifully decorated.

From the salon aft, one may descend to the master stateroom or engine room. The full beam master offers a king size bed, his and her heads with common shower/Jacuzzi tub. There is a central vacuum system. Forward from the master stateroom is the access door to the engine room. It is rare to enter an engine room on a 6 month old boat that is this clean and detailed, unheard of on an almost 20 year old boat. Every system is and has always been fully maintained and detailed. Another custom feature is to only have one single engine access aft, instead of through the forward VIP.

Salon

- (2) Reclining chairs
- Coffee table
- Couch
- Carpet runner
- Custom AV cabinet
- Custom cabinets for storage under TV
- Round Dining Table for 4
- Central vacuum system
- One solid Roman shade full length of Salon
- Custom cabinetry
- 55" Samsung HD 4K TV

Master Stateroom

- Jacuzzi tub/shower
- His/her head
- Custom storage behind TV
- Full height storage closet at bottom of stairs to Master in Companionway

- Sound bar for Surround Sound
- Touch LED lights for makeup area
- Custom stainless oval portholes
- 55" Samsung 4K HD TV (2017)
- Settee
- Storage under bed
- Roman blinds
- Walk in closet

VIP

- 55" Samsung 4K HD TV
- Queen size bed with storage underneath
- Custom No Engine Room Access
- (2) hanging closets
- Stainless porthole
- Ensuite head/Jacuzzi tub/shower

Forward Stateroom

- Queen bed
- Storage cabinets
- Hanging closet
- TV
- Head with shower
- Deck hatch for natural light

Galley

- Microwave oven - Whirlpool (2016)
- Refrigerator - S/S GE french door (2016)
- Dishwasher - Whirlpool 940 series
- Oven - Whirlpool
- Induction cook top (2017) - boils water in 30 seconds
- Granite counter tops (2016)
- New faucets
- Custom cabinetry with maximum storage and functionality
- Baking pan storage above microwave
- Custom drawer above fridge
- Custom glass and dish storage - aft side of galley
- Custom K Cup - coffee maker and additional storage behind

The Galley appliances were all replaced in 2016 and look as new, all S/S.

Pilothouse

- Leather seat
- Custom wine storage portside
- Custom storage under helm seat
- Custom massive storage under stairway to flybridge
- Ships service power panel
- Navigation electronics
- Custom Recessed wiper controls and tank gauges
- ISO boosters

Electronics

- Cameras (engine room, 2 stern)
- 2 underwater cameras in stern
- DVD player - Blue Ray in Salon, Master and VIP
- Speakers - cockpit
- 32 JL speakers - Flybridge
- Navigation center
- CD player
- Radio - Fusion by Garmin 2018
- Plotter - Raymarine RL80C
- Radar - 72 mile Simard 48
- GPS - Raymarine
- Autopilot - Robertson AP 300X
- Compass
- Depth sounder - B&G and Raymarine
- VHF - Icom ICM-604
- Wind speed and direction - B&G

- Ships spot light - ACR RCL-100

- Seahail hailer

Audio & Visual Equipment

- **(3) new 55" 4K Samsung TV's, one each in the main salon, VIP and the Master Stateroom**
- Intellian 24" HD dish (2016) and HD receivers
- (2) pan tilt zoom aft deck cameras

- Custom Surround Sound - Salon
- Custom A/V rack - Salon

Electrical Equipment

- Shore power inlet - Two Glendinning Cablemasters on stern plus 2 on the bow, four in total with 50 amp cord on each
- Generator - Two Onan, 20 kw (4,324 hrs) and a new in 2013 25 kW (2169 hrs) with the 25 being freshly rebuilt 2/2018 and less than 200 hours.
- Upgraded digital Onan control station
- **10 underwater lights - Extreme Beams (2 down, 2 each side, 4 back), white**
- Battery charger - Charles
- 6 LED lights under overhang on each side, white
- Mast lights

Deck and Hull

Hull

- **Upgraded oval stainless port holes (\$20K)**
- Upgraded rub rail 1.5"
- Fully painted 2007, recent touch ups 2018

Deck

- **All oversized railing (1.5") and continuous single welds**
- Gangway - Marquipt 8 step with one hand rail
- Teak cockpit - **Flexiteak decking**
- Cockpit cushions
- Swimming ladder - S/S
- Cockpit table and 4 chairs
- Davits - Marquipt 1500 lb telescoping Hydraulic
- Cockpit shower
- Electric windlass - Maxwell VWC 3500 with new stainless steel anchor (2017)
- 100 lb stainless Ultra anchor - 2017
- Sun lounge pad on bow
- Dual custom access hatches to lazzerette storage

Flybridge:

- Granite lower cocktail table
- Helm chairs
- Bar stools (4)

- Custom storage under bar top
- **Custom Solaria 30" BBQ grill - new**
- **Sub Zero 32" drawers - new**
- **Marvel clear ice ice maker - new**
- Custom sound system with 32 JL Audio speakers and Fusion Head unit
- Bimini top - folds down and arch can be lowered for bridges (Great Loop bridge clearance)
- Custom storage drawers for wine and liquor storage

Aft Deck:

- Round table and four chairs
- Stainless steel appliances (new)
- Peerless 30 bottle wine cooler (new)
- Marvel clear ice ice maker Marvel three drawer refrigerator (new)
- Corian Counter top with lip trim/ sink
- Flexi Teak decking
- Cool down aft deck sprinkler system for wetting down the aft deck on hot days
- The aft deck is covered by the boat deck and the sport deck has a custom sail shade.
- Fresh water shower
- Oversize railing
- (2) rod holders
- Lazzarette doors
- Emergency escape hatch Lazzarette

Mechanical

- The Caterpillar 3412's were also upgraded with custom chrome packages at the Hatteras factory when the boat was built
- **Dual hydraulic PTOs off of each engine**
- New ISO boosters - Pilothouse
- Upgraded digital Naiad stabilizer
- Electric bilge pump
- New Mach 5 freshwater pump
- Marine head - Head Hunter Royal Flush with elongated heads
- Washing machine - Maytag full size washer and dryer
- Fresh water maker - Sea Recovery 1200 gallon per day
- Hot water
- Bow thruster - Hydraulic
- Air compressor - 20 gallon Craftsman mounted in the engine room
- Dual Delta T engine room blowers (2 each side)
- Central vacuum

Crew Stateroom

- (2) Bunks with storage beneath
- HD TV
- Closet
- Ensuite head/shower

Safety

- EPIRB

Exclusions

Owner's personal belongings.

Disclaimer

The Company offers the details of this vessel or yacht in good faith but cannot guarantee or warrant the accuracy of this information nor warrant the condition of the vessel. A buyer should instruct his representatives, agents, or his surveyors, to investigate such details as the buyer desires validated. This vessel or yacht is offered subject to prior sale, price change, or withdrawal without notice.

PHOTOS

IMG_1936



IMG_1863



IMG_1840



IMG_1911



IMG_1886



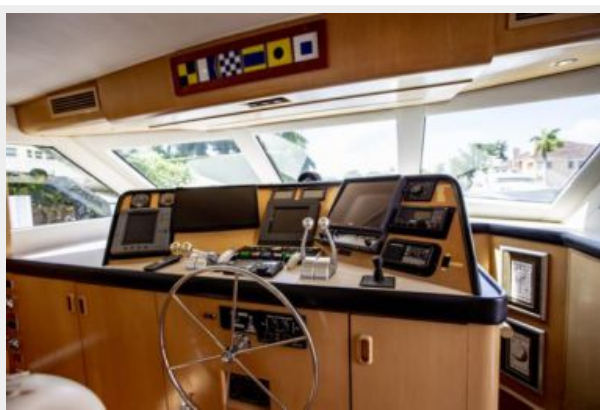
IMG_1866



IMG_1874





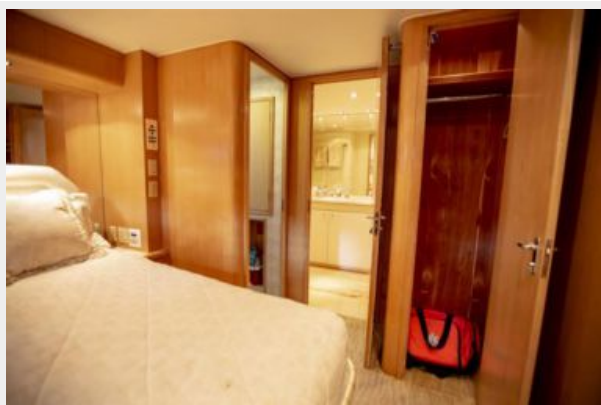


























CONTACTS

Andrey Shestakov, leading yacht broker of the sales department of Shestakov Yacht Sales Inc. Shestakov Yacht Sales Inc., the official representative of the Miami/Fort Lauderdale FL headquarters.

Contact details

Email: andrey@shestakovyachtsales.com

Web: shestakovyachtsales.com/en/

Telephones

USA: +1(954)274-4435

Office hours

Monday – Saturday: **9:00 - 21:00** EDT

Sunday: **closed**

Address



Harbour Towne Marina, 850 NE 3rd St,
STE 213, Dania, FL 33004