

PIGLET — SEA RAY



Builder: SEA RAY

Year Built: 2006

Model: Motor Yacht

Price: PRICE ON APPLICATION

Location: United States

LOA: 52' 0" (15.85m)

Beam: 15' 3" (4.65m)

Max Draft: 4' 3" (1.30m)

Our experienced yacht broker, Andrey Shestakov, will help you choose and buy a yacht that best suits your needs **Piglet — SEA RAY** from our catalogue. Presently, at Shestakov Yacht Sales Inc., we have a wide variety of yachts available on our sale's list. We also work in close contact with all the big yacht manufacturers from all over the world.

If you would like to buy a yacht **Piglet — SEA RAY** or would like help answering any questions concerning purchasing, selling or chartering a yacht, please call **+1(954)274-4435**

TABLE OF CONTENTS

TABLE OF CONTENTS	2
SPECIFICATIONS	3
Overview	3
Basic Information	3
Dimensions	3
Speed, Capacities and Weight	3
Accommodations	3
Hull and Deck Information	4
Engine Information	4
DETAILED INFORMATION	5
Factory Installed Options and Upgrades	5
Accommodations	5
Electronics	7
Electrical System	9
Deck Equipment	9
Mechanical and Engine Details	10
Exclusions	11
Disclaimer	11
Exclusions	11
Disclaimer	12
PHOTOS	13
CONTACTS	26
Contact details	26
Telephones	26
Office hours	26
Address	26

SPECIFICATIONS

Overview

Twin QSM-11 Cummins Diesels under 800hours, Freshwater Boat until Fall 2017, Dry Stored at River Forest inside a Climate Controlled Building during the 6 month Hurricane Season, Extremely Clean Yacht, Hardtop with Complete Enclosure, Owner is Meticulous about his Vessel, Just Buffed and Waxed.

Basic Information

Category: Motor Yacht

Sub Category: Flybridge

Model Year: 2006

Year Built: 2006

Country: United States

Fly Bridge: Yes

Cockpit: Yes

Dimensions

LOA: 52' 0" (15.85m)

Beam: 15' 3" (4.65m)

Max Draft: 4' 3" (1.30m)

Speed, Capacities and Weight

Displacement: 36700 Pounds

Water Capacity: 140 Gallons

Holding Tank: 68 Gallons

Fuel Capacity: 500 Gallons

Accommodations

Total Cabins: 3

Total Berths: 4

Sleeps: 6

Total Heads: 2

Hull and Deck Information

Hull Material: Fiberglass

Engine Information

Engines: 2

Manufacturer: Cummins Mercruiser

Model: QSM-11

Engine Type: Inboard

Fuel Type: Diesel

DETAILED INFORMATION

Factory Installed Options and Upgrades

- 4000 watt Inverter
- Air Conditioning/Heating
- Anchor, 60 lb.
- Bow Thruster
- Stern Thruster
- KVH TracVision Satellite TV System
- Macerator
- Salon Sofa
- Seating, Aft Bench
- Sun Pad, Forward Deck
- Table, Salon
- Transformer, Shore Power Isolation
- Transom Davit System
- Marquipt Hydraulic Davit in Transom Locker
- Custom SeaDeck Decking:
 - Flybridge
 - Cockpit
 - Swim platform

Accommodations

Air Conditioning/Heating (Cabin)

- Custom Integral Vent System
- Zone-Controlled Reverse-Cycle System

Cabin Features

- Blinds
- Carbon Monoxide Monitors
- Companionway Wall
- Curtains
- Doors, Raised Panel
- Handrails
- Lighting, 120V
- Lighting, 12V
- Lighting, 12V
- Outlet, 12V
- Outlets, 120V

- Outlets, Phone
- Pillows, Accent
- Satin Finish Outlet & Switch Plates

Salon

- Entertainment Center
- Ottomans, Movable
- Seating, L-Shaped Sofa
- Seating, Sofa

Galley

- Coffeemaker, 120V
- Countertop, Solid Surface
- Floor Storage
- Flooring, Wood
- Microwave/Convection Oven, 120V
- Outlet, 12V
- Power Vent, 12V
- Refrigerator & Freezer, 120V
- Storage, Drawers
- Storage, Large Pull-Out
- Storage, Upper & Lower
- Stove, 240V Flush-Mount Two-Burner

Dinette

- Flooring, Wood
- Seating, L-Shaped
- Storage, Aft Cabinet
- Table, Dining

Master Stateroom

- Bed, Full-Size
- Countertops, Wood
- Door, Privacy
- Wardrobe Lockers (2)
- Mirrored Rope Locker
- Stereo, Bose Lifestyle 48 with DVD
- Storage, Gunwale Shelves
- TV, 17" LCD Flatscreen

Master Stateroom Head/Shower

- Door, Private

- Flooring, Wood
- Handrails
- Head System, (VacuFlush)
- Power Vent, 12V
- Shower
- Storage, Medicine Cabinet
- Storage, Towel Cabinet
- Vanity

Port Guest Stateroom

- Bed, Full-Size
- Door, Privacy
- Wardrobe Locker
- Mirrors, Wall Accent
- Skylight, Rectangle
- Storage, Side Shelf
- TV, 17" LCD Flatscreen

Starboard Guest Stateroom

- Bed, Lower Bunk
- Bed, Upper Bunk
- Wardrobe Locker
- Outlet, TV Coax
- Skylight, Rectangle
- Storage, End Table
- Storage, Upper Cabinet

Guest Head/Shower

- Bath Accessories
- Door, Privacy
- Door, Privacy
- Flooring, Wood
- Handrails
- Head System, (VacuFlush)
- Power Vent, 12V
- Shower
- Storage, Medicine Cabinet
- Vanity

Electronics

- Dual Raymarine E120 GPS/Chartplotter/Radar

- Raymarine Autopilot
- Raymarine Open Array Radar
- Raymarine VHF Radio with Speaker
- Flush Mounted Lighted Compass
- Vetus Bow and Stern Thruster Joystick Controls
- ACR Spotlight Control
- Sea Ray Systems Monitor

Helm Station

- Alarm, High-Water
- Alarms, Engine
- Emergency Engine Stop
- Emergency Start System
- Horns, Air
- Panel, Switch
- Panels, Instrument
- Shift & Throttle Controls
- SmartCraft Diagnostic Readout
- Steering Wheel, Wood-Accent
- Steering, Hydraulic
- Steering, Tilt Wheel
- Switch Panel (Backlit)
- Switches, Illuminated

Bridge Features

- Complete Enclosure in 2016
- Beverage Holders (6)
- Control Station
- Handrails
- Hardtop, Fiberglass
- Hatch, Bridge Access
- Lighting, 12V
- Outlet, 120V
- Outlet, 12V
- Outlet, Cable TV
- Refrigerator, 120V
- Seating, Helm (2)
- Seating, U-Shaped
- Ship's Bell
- Steps, Molded Bridge Access
- Stereo, Clarion
- Storage, Glove Box
- Storage, Helm Access Door

- Table, Bridge
- Wet Bar

Electrical System

- Batteries, 8-D
- New Starting Batteries Oct. 2018
- Battery Charger
- Battery Charger/Converter, 120V/50 Amp/12V
- Inlet, Cable Television
- Panel, DC Distribution
- Panel, DC Main Breaker
- Panel, Main Distribution
- Panel, Remote Circuit Breaker
- Shore Power, Cablemaster
- Wiring, Color-Coded

Generator

- 13.5 kW Onan Diesel with under 270 Hours

Deck Equipment

Hull & Deck Features

- Bow Rail, 316 Stainless Steel
- Cleats, Custom Sea Ray Thru-Bolted (10)
- Deck Fill Plates
- Deck Rails
- Gel Coat, Arctic White
- Handrails
- Hatch, Deck Vent
- Lights, Navigation
- Portlights (6)
- Resin
- Rub Rail, Heavy-Duty PVC
- Storage, Transom Wall
- Swim Platform, Integral
- Thru-Hull Fittings
- Vent System, Engine Room
- Windows, Deck Side
- Windshield, Bridge Venturi
- Windshield, Tempered/Tinted Curved Glass

Windlass System

- Anchor
- Anchor Chute
- Anchor Washdown Spigot
- Electric Windlass, Rope/Chain

Cockpit Features

- Aft Bench
- Door, Cabin Entry
- Door, Transom
- Floor Liner, Fiberglass
- Handrails
- Hatch, Engine Service
- Lighting, 12V
- Outlet, 120V
- Rod Holders (2)
- Steps, Molded Deck Access
- Storage, Side Panels
- Storage, Transom Wall

Mechanical and Engine Details

Engine Room

- Bilge Pumps, 12V Automatic (2)
- Bilge Pumps, 12V Automatic High-Water
- Blowers, 12V Bilge (2)
- Exhaust, Power Pac/Lift System Mufflers & Sound Insulation
- Fire Suppression System
- Flooring, Fiberglass Diamond Plate
- Freshwater Cooling
- Insulation, 2"
- Ladder, Removable
- Lighting, 12V
- Oil Changer System
- Synchronizer, Engines

Fuel System

- Crossover Fuel System
- Fuel Filters (3) (Racor)
- Fuel Tanks, Aluminum

Water System

- Freshwater Washdown & Anchor Spigot
- Freshwater Washdown Hose Spigot
- Pressure Water System
- Water Heater, 20-Gal
- Water Manifold System

Waste Systems

- Cabin Sump Pump
- Central Drain System
- Head System, (VacuFlush)
- Holding Tank Level Indicators

Underwater Gear

- Bonding System
- Propeller Shafts, 2 1/2"
- Propellers, Nibral 4-Blade Cup
- Rudders, Manganese-Bronze
- Seacocks
- Seawater Strainers
- Shaft Logs, Dripless
- Struts, Manganese-Bronze
- Trim Tabs, Hydraulic

Exclusions

- Owner's Personal Items, Tools, and Paddle Boards.

Disclaimer

The Company offers the details of this vessel in good faith but cannot guarantee or warrant the accuracy of this information nor warrant the condition of the vessel. A buyer should instruct his agents, or his surveyors, to investigate such details as the buyer desires validated. This vessel is offered subject to prior sale, price change, or withdrawal without notice.

Exclusions

Owner's personal belongings.

Disclaimer

The Company offers the details of this vessel or yacht in good faith but cannot guarantee or warrant the accuracy of this information nor warrant the condition of the vessel. A buyer should instruct his representatives, agents, or his surveyors, to investigate such details as the buyer desires validated. This vessel or yacht is offered subject to prior sale, price change, or withdrawal without notice.

PHOTOS



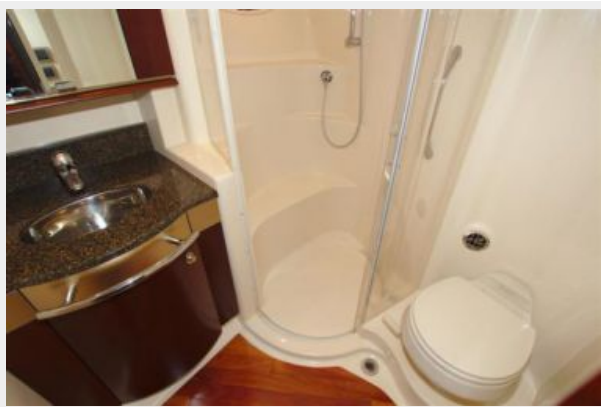


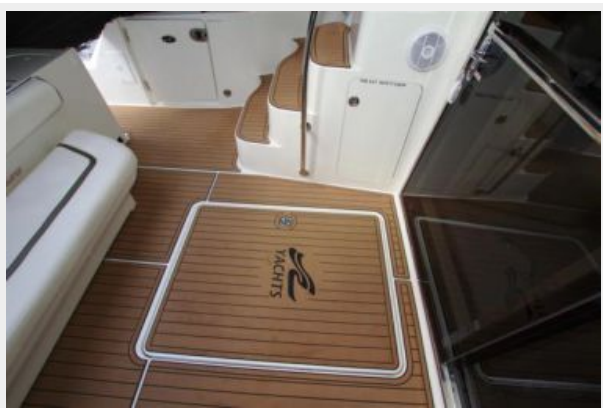
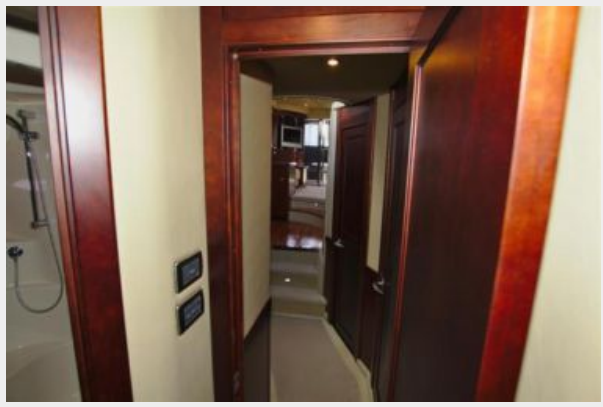




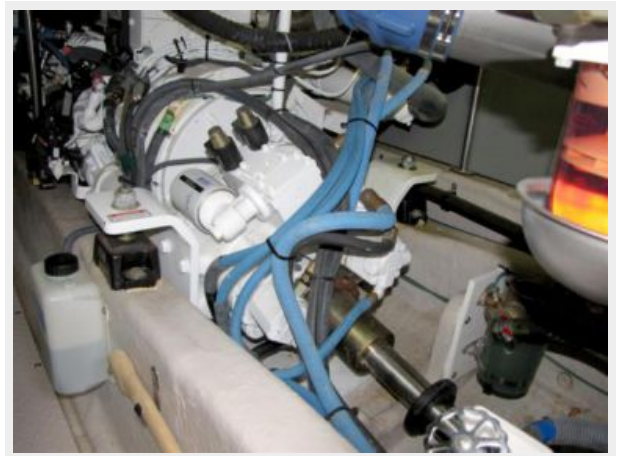




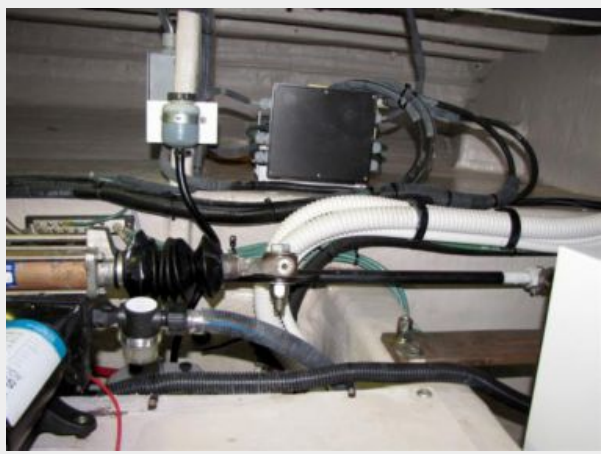
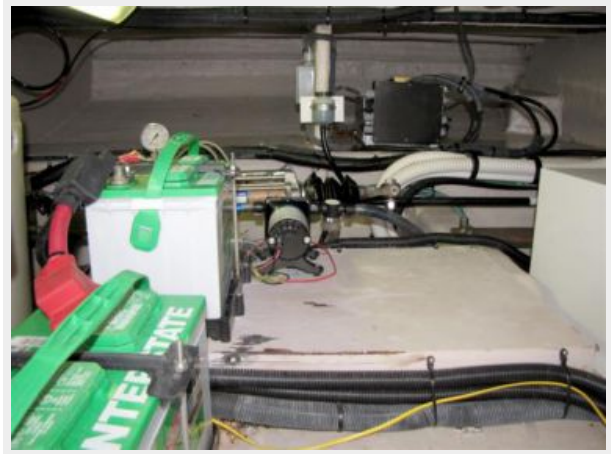














CONTACTS

Andrey Shestakov, leading yacht broker of the sales department of Shestakov Yacht Sales Inc. Shestakov Yacht Sales Inc., the official representative of the Miami/Fort Lauderdale FL headquarters.

Contact details

Email: andrey@shestakovyachtsales.com

Web: shestakovyachtsales.com/en/

Telephones

USA: +1(954)274-4435

Office hours

Monday – Saturday: **9:00 - 21:00** EDT

Sunday: **closed**

Address



Harbour Towne Marina, 850 NE 3rd St,
STE 213, Dania, FL 33004