

ELYMAR — LAZZARA



Судостроитель: LAZZARA

Год постройки: 2000

Модель: Мега-яхта

Цена: ЦЕНА ЯХТЫ ПО ЗАПРОСУ

Местонахождение: United States

Длина общая: 94' 0" (28.65m)

Ширина: 23' 0" (7.01m)

Макс. осадка: 5' 5" (1.65m)

Крейс. скорость: 19 Kts. (22 MPH)

Макс. скорость: 24 Kts. (28 MPH)

Купить **ELYMAR — LAZZARA** а также выбрать подходящую вам яхту из нашего каталога яхт вам поможет опытный яхтенный брокер Андрей Шестаков. На сегодняшний день компания **Shestakov Yacht Sales Inc.** имеет большое количество яхт в собственном списке продаж, а также тесно сотрудничает со всеми крупными яхтенными производителями по всему миру.

Для того чтобы купить яхту **ELYMAR — LAZZARA** а также проконсультироваться по любому вопросу связанному с покупкой, продажей, чартером яхт позвоните по телефону **+7(918)465-66-44**.

ОГЛАВЛЕНИЕ

ОГЛАВЛЕНИЕ	2
ХАРАКТЕРИСТИКИ	3
Обзор	3
Основная информация	3
Размеры	3
Скорость, вместимость и масса	3
Размещение	4
Корпус и палуба	4
Информация о двигателе	4
ПОДРОБНОЕ ОПИСАНИЕ	5
Walkthrough	5
Исключения	8
Отказ от ответственности	8
ФОТОГРАФИИ	9
КОНТАКТЫ	27
Контактная информация	27
Телефоны	27
Время работы	27
Адрес	27

ХАРАКТЕРИСТИКИ

Обзор

"Elymar" is a one of a kind, American built, "Showboats award winning design" Lazzara 94 enclosed flybridge. She boasts 5 staterooms all with ensuite heads (plus 4 crew), a spacious country kitchen, gigantic salon with day head, plus a fantastic enclosed sky lounge and aft sundeck area. The entire yacht has been completely updated in a 2018 refit including: Engines rebuilt by MTU mechanics with 1 year warranty, new transmissions with 2 year warranty, new awlgrip paint, new updated modern interiors, new galley appliances, new Audio Visual & Garmin Navigational equipment, Trac stabilizer fins, a hydraulic swim platform, and new Teak on the aft deck. Her shallow draft of 5'5" is another important highlight that makes this boat perfect for Miami and Bahamian cruising!

Основная информация

Тип судна: Мега-яхта	Модельный год: 2000
Год постройки: 2000	Год обновления: 2018
Вид обновления: Full	Страна: United States
Верх: Enclosed	Открытая палуба мостика: Да

Размеры

Длина общая: 94' 0" (28.65m)	Ширина: 23' 0" (7.01m)
Макс. осадка: 5' 5" (1.65m)	

Скорость, вместимость и масса

Крейс. скорость: 19 Kts. (22 MPH)	Макс. скорость: 24 Kts. (28 MPH)
Водоизмещение: 190000 Pounds	Вместимость воды: 600 Gallons
Вместимость сточного бака: 300 Gallons	Объем топливного бака: 4000 Gallons

Размещение

Всего кают: 5

Всего коек: 10

Спальные места: 10

Всего ком. состава: 6

Каюта капитана: Да

Каюты экипажа: 1

Койки экипажа: 4

Спальных мест экипажа: 4

Комм. состав экипажа: 2

Корпус и палуба

Материал корпуса: Fiberglass

Цвет корпуса: White

Информация о двигателе

Двигатели: 2

Производитель: MTU

Модель: 12v2000

Тип двигателя: Inboard

Тип топлива: Diesel

ПОДРОБНОЕ ОПИСАНИЕ

Walkthrough

CONSTRUCTION Fiberglass, with balsa core throughout Hull below the waterline double sandwich construction. Solid fiberglass laminate keel and chines. Blister resistant gelcoat below water line Vinyl ester skin coat Painted urethane finish on the exterior Balsa core reinforced stringer system Balsa core bulkheads, floors Lower sole isolated using vibration reducing discs under sole for noise reduction.

MECHANICAL Acoustical and thermal insulation in engine room. Chilled water system for air-conditioning and heating, 169,500 BTU's Bilge pumps (24 Volt) Dockside water connection (2) with pressure reducing valve (forward and aft) Engine room blowers (2 @ 230 volts) Engine driven emergency bilge pump Generator and main engine sea strainers Compressed air marine toilet system Fire protection system, automatic and manual Fresh water outlet in engine room Fresh water wash down on fore deck, stern deck and flybridge Fuel priming pumps for engines and generators Manifold fuel filters Fuel filters for generators Main fuel tank fiberglass, auxiliary tank aluminum Electronic engine controls- combination clutches and throttles Holding tank with access for pump out Hydraulic steering, power assisted Electronic engine synchronizers Mufflers for engines and generators Under water engine exhausts with dockside by pass Oil changing system for engines and generators, 60 gallons new and used Oil reserve tank Four bladed Nibral propellers Bronze underwater thru hull sea cocks Twin 2000 series 12 cylinder diesel engines, 1480 hp. Two 27kw generators with sound shields DDEC electronic engine function display Water heater 80 gallons Water system, pressurized, 230 volt, primary pump plus backup pump Water tanks, (2) linear polyethylene, LSR stainless rudder and drive system TRAC Stabilizer Fins, Hydraulic Hydraulic bow thruster 40 hp Central vacuum system Compressed air outlet in engine room Watermaker 1,200 gallons / per day Air horns Work bench

ELECTRICAL & Audio Visual ISIS computer shipboard monitoring system Alarms for engines, reduction gears, bilges and generators. Audible and visible Anchor light, 24 volt Batteries, heavy duty, 24 volt 4 banks: two house, two start Bonded electrical system Coded wiring system 100A/240-volt shore power inlets, (2) Two 125 ft. shore power cords with automatic reels, designed to exit engine room grill on either port or starboard side and shore power cord forward Engine room lights AC/DC Instrument panel lights Two isolation transformers Interior lighting 110 volts and 24 volts Master control panels with AC/DC circuit breakers, voltage and amp meters Main power distribution panel Navigation light 24 volts. Receptacles, 120 volt duplex. Search light with dual controls Telephone and cable TV inlet (2) cords. Underwater lights

MAIN DECK - WIDE BODY Stainless breastplate and anchor chute with anchor chain washdown Vertical hydraulic anchor windlass with chain stopper (4500 lb. capacity) Bulwark boarding gates, port and starboard Stainless steel cleats Forward bow deck seating area with hydraulic lift lid to access storage Deck access hatch forward to crew cabin Fiberglass bulwarks Stainless steel bow rails, 2" Deck fills, water and waste removals (port and starboard) Fuel fills aft (port and starboard) Fore and aft deck wash downs, fresh water Stainless steel hawse pipes Dockside water connections w/ regulators Frameless windows throughout

TRANSOM Stairway with teak steps New Opacmare Hydraulic Swim platform (700lb Capacity) New Teak deck surface (Entire cockpit and steps) Fresh water hot and cold

showerHinged stanchion rail system, 2"Access door to Crew and Engine Room AFT DECK
 Electronic engine controls w/combo clutch, throttles, bow thruster, horns, and emergency
 engine stops (port and starboard stations)Access to transom sport deckAccess to fly bridge,
 stainless steel ladder with teak treadsCustom Granite Wet Bar to port with ice-maker and
 fridgeTable with Granite top, stainless steel posts, for aft deck seatingNew Aft deck seating group
 upholstered in Fabric Custom White Wicker Chairs with Grey matching Fabric chairs (5)Aft deck
 fiberglass bulwarks Stainless steel hand rails, 2"Bulwark boarding gates, port and
 starboard Lights mounted in hard top, with dimmable lighting switchFour stereo speakers in
 hardtopStep up access to widebody deckway, access to spring line cleatsStainless steel aft deck
 cleats, 24", with hawsers Aft deck washdownNew Teak aft deck Mew Opacmare Hydraulic Swim
 Platform ENCLOSED FLY BRIDGE SKYLounge Fully enclosed Air-Conditioned bridge sky
 lounge Grey upholstered Sectional fabric couch with Ottoman to portChaise lounge to
 starboard Full Bar with Icemaker/ Fridge and Granite Countertop to port Cabinet with TV on a lift
 to centerOPEN AFT BRIDGE Circular Hot Tub surrounded by Custom built Sunbathing
 cushions upholstered in Grey Fabric. Free standing White Wicker outdoor lounge furniture
 surrounding the entire aft bridge section. New JL Audio Speakers and spreader lights facing
 aftWhite non-skid resurfacing. RAISED PILOT HOUSE 3 x NEW 20" Garmin Touchscreen GPS
 unitsNew Garmin AutopilotNew Garmin TriData Unit Fully equipped control stationAlarms for
 engines, gears, bilge, and generators, audible and visibleElectronic engine controls w/
 combination clutches and throttlesBow thruster controlCustom forged aluminum steering
 wheelMaster electric panelsWindshield wipers and washersDash below windows in veneerStidd
 Captain's helm seat and a double helm type seat for guests or crewNew Carpet Guest settee
 behind helm in Ultra-leather upholsteryCaptain's desk with drawers, veneeredDesk chairChart
 storage drawersBookshelves and cabinet, above desk, in veneerAll interior surfaces on walls
 and mullions covered with MajiliteLaminated windshield glass, 1/2"Access to lower level
 hallwayAccess to Enclosed Bridge SkyLounge SALON All new Interiors: White / Grey Port
 Sectional sofa upholstered with Ottoman / Coffee Table Walls upholstered in custom white
 wallpaperNew Dark Espresso Hardwood Flooring Port and starboard veneered furniture
 cabinets with granite countertops New Samsung Smart TV's throughout New SONOS Sound
 System throughout HD Satellite TV Receivers Bar with pull out liquor storage drawers and
 Formal Buffett Granite countertopStorage for barwareWine chillerFloor to ceiling curio cabinets in
 veneer with mirrored backs and shelves, port and starboardWindows, 3/8" tempered glassFull
 length glass door to aft deckVeneered mullions at side windowsFloor to ceiling veneered aft
 salon wall columnsOverhead lighting DINING AREA Oval Wood dining table with 8 White
 Leather and stainless steel chairsChina buffet cabinet, veneered, with Granite Countertop Upper
 china cabinet, veneered, with glass doors, mirrored back and custom acrylic stemware
 holdersMirrored wall between upper and lower china cabinetRecessed ceiling lighting with
 mirror over dining table Walls upholstered in standard fabricWindows with 3/8" tempered
 glassAccess to lower level aft accommodationsAccess to hallway leading to galley DAY HEAD
 Wall mounted vanity in veneerVanity top in Black Granite Designer quality brass faucetMirrored
 wall above vanityKohler brass towel ring and fixturesMarine head systemWall coveringHead
 door, veneered GALLEY - COUNTRY KITCHEN & DINETTE Total Refit. All Appliances and
 Surfaces NEW:Black Granite galley countertops with full height backsplashesStainless Steel
 oversized basin double sinks with Commercial Grade Adjustable pull down FaucetsWhite

Lacquered cabinets Lacquered pantry cabinet New plank flooring Stainless Steel Dishwasher Four burner electronic cook top with Designer Exhaust Fan Jenn-Air Stainless Steel Oven / Microwave Built- in custom Espresso Maker Trash compactor Sub Zero Side-by-side refrigerator and freezer with ice maker Windows with 3/8 inch tempered glass Pleated shades and valances in standard fabric at window Seating for eight in custom contoured settee Black Granite top on dinette table Lacquered end table with granite top next to seating group Lacquered cabinets forward of seating group 4K Curved LED Samsung TV in lacquered cabinet Walls upholstered in standard Majilite Pleated shades and valances in standard fabric at windows Overhead Storage forward of settee dinette with pneumatic lift lids

MASTER STATEROOM All new Wall covers, carpets, bedding, Walk around king size bed with drawer storage below Innerspring mattress on bed Padded headboard upholstered to match bed base Veneered night stands, two, with veneered insert tops Armoires in veneer, two, with veneered tops Vanity desk between armoires in veneer with veneered top Vanity chair in standard fabric Dresser in veneer with veneered top Bookcase, with shelves, veneered Wall mounted 4K Samsung Smart TV Carpeting throughout, installed over SoundDown insulating padding Indirect mood lightning throughout Stainless steel opening ports Wall mounted reading lights Telephone outlet Walls upholstered in standard fabric Pleated shades and valances in standard fabric at opening ports Walk in wardrobe closets, (2) with shelves and closet hooks Veneered closet doors with hooks Full height mirror on inside of walk-in closet doors Refrigerator Personal safe in wardrobe closet Headliner, removable, in Majilite Winter White Gold plated, brass cast cabin door handles Gold plated wall electrical switch plates

MASTER HEAD Jacuzzi Tub with shower and Grohe controls Marble tub with Cream Marble Tub face and closeout Tile with Marble insert Floor Double vanity with Cream Marble counter top and under hung Corian sinks Designer quality faucet, fixtures and towel bars Mirrored storage cabinets over sinks Lacquered cabinet with storage below sinks Exhaust fan Marine toilet (enclosed) 120 volt receptacle with ground fault LED lighted switches Shampoo holder in shower Overhead and indirect lighting, with switches Hooks on veneered doors Veneered cabin door accessing master stateroom head Veneered head door accessing enclosed head

BOW STATEROOM Full size Queen Berth Bed base wrapped in standard Majilite with wood veneer trim Inner spring mattress on bed Padded headboard to match bed base Storage drawers below Walls upholstered in standard fabric Dresser with six drawers, veneered top and lacquered front Overhead storage locker with lacquered doors Mirrored wall surface between dresser and overhead storage Storage lockers outboard with lacquered doors Wall mounted reading lights Hanging locker with mirrored door Pleated shade and valance over port Stainless steel opening port Floor access to lower forward bilge and pump room Indirect lighting and overhead lighting Private access to head Bedsprad and shams in standard fabric 110 volt receptacle Veneered cabin door Veneered door accessing private head Hook on closet door Headliner, removable, in Winter White Gold plated, brass cast cabin door handles Gold plated wall electrical switch plates

PORT VIP STATEROOM Queen size bed with storage drawers below Innerspring mattress on bed Bed base wrapped in standard Majilite with wood veneer trim Padded headboard to match bed base Night stand in veneer with veneered top Quarter round storage cabinet, veneered Mirrored hanging locker lined with cedar accents Stainless opening ports Private access to head Receptacle (120 volt) Wall mounted reading lights Indirect lighting under bed and bookcases Flush mounted halogen lighting in headliner Pleated shades and valances in standard

fabric at windows Bedsread and shams in standard fabric Veneered cabin door Veneered door accessing private head Hook on closet door Wall mounted emergency flash light Headliner, removable, in Winter White Gold plated, brass cast cabin door handles Gold plated wall electrical switch plates MID VIP STATEROOM Queen size bed with storage drawers below Innerspring mattress on bed Bed base wrapped in standard Majilite with wood veneer trim Padded headboard to match bed base Night stand in veneer with veneered top Quarter round storage cabinet, veneered Veneered book cases with mirrored back on out board wall Mirrored hanging locker lined with cedar accents Stainless opening ports Private access to head Receptacle (120 volt) Wall mounted reading lights Indirect lighting under bed and bookcases Flush mounted halogen lighting in headliner Pleated shades and valances in standard fabric at windows Bedsread and shams in standard fabric Veneered cabin door Veneered door accessing private head Hook on closet door Wall mounted emergency flash light Headliner, removable, in Winter White Gold plated, brass cast cabin door handles Gold plated wall electrical switch plates STARBOARD GUEST STATEROOM Twin Berths Pleated shades and valances in standard fabric at windows Bedsread and shams in standard fabric Veneered cabin door Veneered door accessing private head Hook on closet door Wall mounted emergency flash light Headliner, removable, in Majilite Winter White Gold plated, brass cast cabin door handles Gold plated wall electrical switch plates GUEST STATEROOM HEADS (4) Private access to head from stateroom Crema Marfil or Green African Stone marble Marble vanity top with under hung Corian sink Mirrored medicine cabinet over vanity Stall shower with Grohe fixtures Brass faucets, fixtures, towel bar and ring Marine toilet Linen storage cabinet Exhaust fan 120 volt ground fault receptacle Halogen lighting overhead with LED switches Double robe hook on veneered doors Crew's quarters Aft 4 Berths

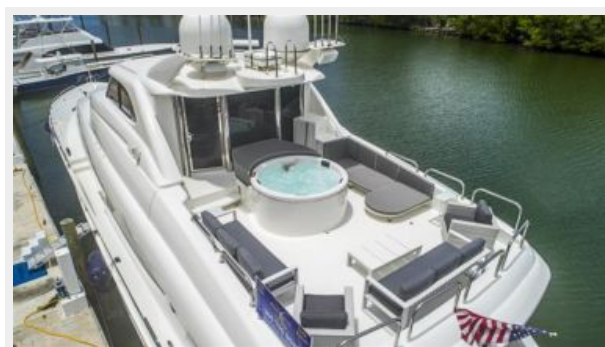
Исключения

При продаже яхты исключаются личные вещи владельца.

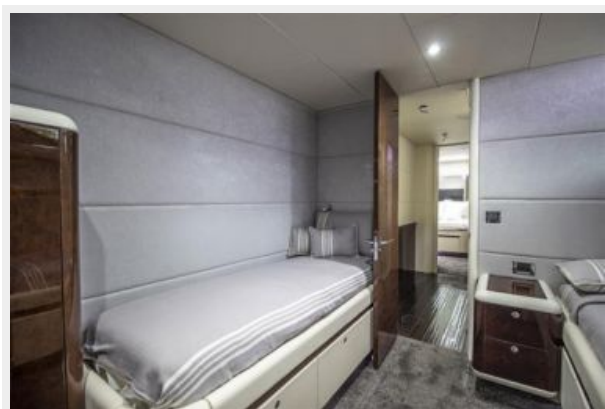
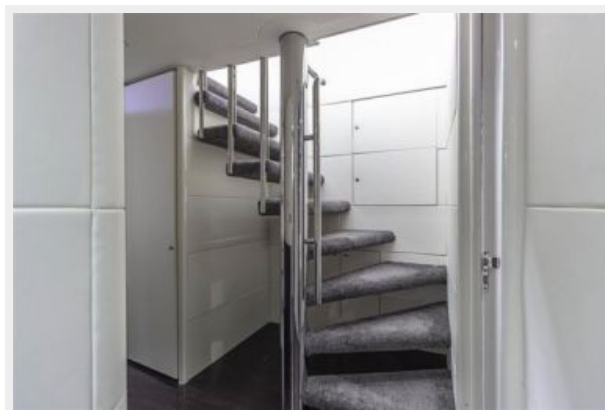
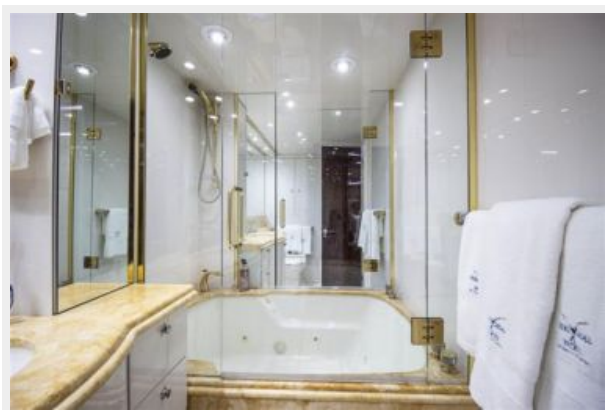
Отказ от ответственности

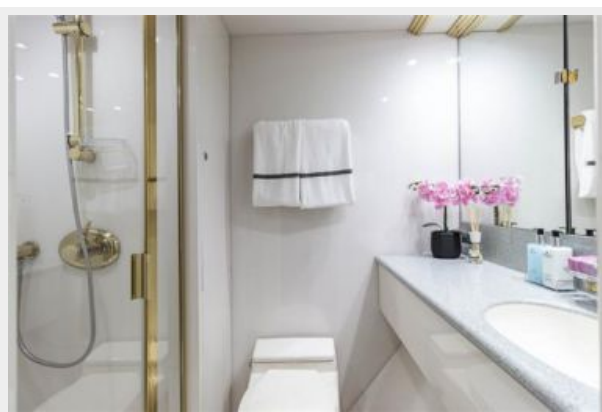
Компания предоставляет описание судна или яхты добросовестно, но не может гарантировать точность этой информации, а также не ручается за техническое состояние. Покупатель должен проинструктировать своих агентов или оценщиков исследовать представленную информацию более подробно, по собственному желанию. Продажа судна или яхты, изменение цены или снятие с продажи будет происходить без предварительного уведомления.

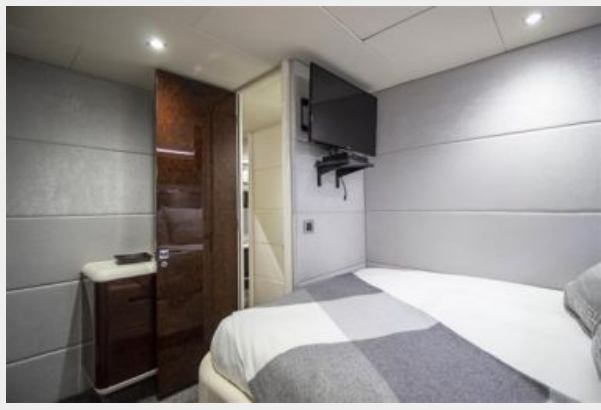
ФОТОГРАФИИ

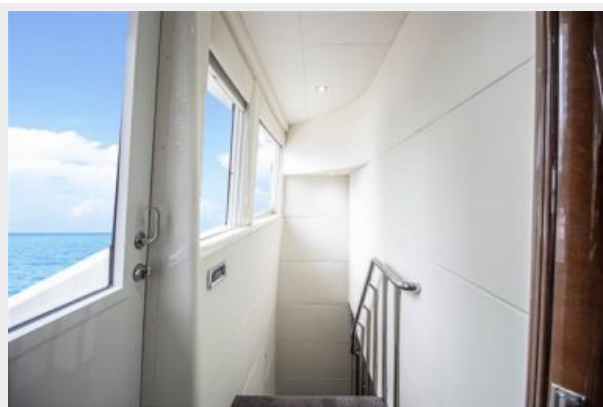
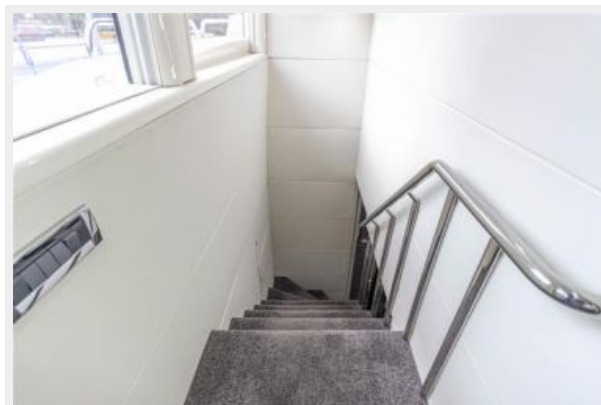
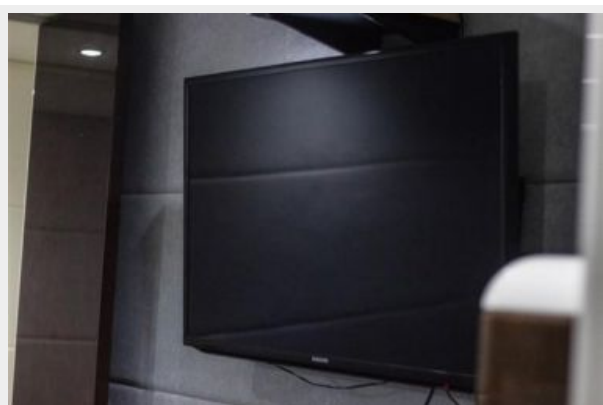






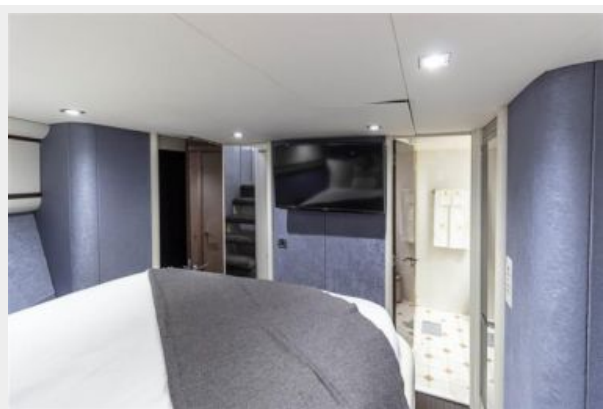
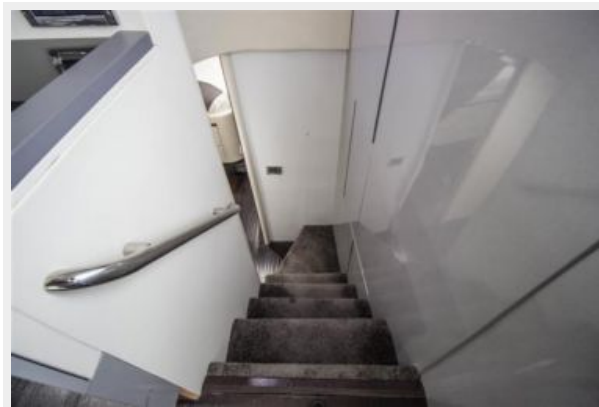






























КОНТАКТЫ

Андрей Шестаков (Andrey Shestakov) – ведущий яхтенный брокер отдела продаж яхт и судов компании Shestakov Yacht Sales Inc. Официальный представитель Shestakov Yacht Sales Inc. для русскоговорящих клиентов в центральном офисе компании в Майами/Форт Лодердейл/Флорида/США.

Контактная информация

Email: andrey@shestakovyachtsales.com

Web: shestakovyachtsales.com

Телефоны

Краснодарский край: **+7(918)465-66-44**

США, Майами, Флорида: **+1(954)274-4435**

Время работы

Понедельник – Суббота: **9:00 - 21:00**
EDT

Воскресенье: **Закрето**

Адрес



Harbour Towne Marina, 850 NE 3rd St,
STE 213, Dania, FL 33004