

MI SUENO — AZIMUT



Судостроитель: [AZIMUT](#)

Год постройки: 2012

Модель: Моторная яхта

Цена: **ЦЕНА ЯХТЫ ПО ЗАПРОСУ**

Местонахождение: United States

Длина общая: 54' 9" (16.69m)

Ширина: 16' 2" (4.93m)

Мин. осадка: 4' 5" (1.35m)

Крейс. скорость: 25 Kts. (29 MPH)

Макс. скорость: 31 Kts. (36 MPH)

Купить **Mi Sueno — AZIMUT** а также выбрать подходящую вам яхту из нашего каталога яхт вам поможет опытный яхтенный брокер Андрей Шестаков. На сегодняшний день компания **Shestakov Yacht Sales Inc.** имеет большое количество яхт в собственном списке продаж, а также тесно сотрудничает со всеми крупными яхтенными производителями по всему миру.

Для того чтобы купить яхту **Mi Sueno — AZIMUT** а также проконсультироваться по любому вопросу связанному с покупкой, продажей, чартером яхт позвоните по телефону **+7(918)465-66-44**.

ОГЛАВЛЕНИЕ

ОГЛАВЛЕНИЕ	2
ХАРАКТЕРИСТИКИ	5
Обзор	5
Основная информация	5
Размеры	5
Скорость, вместимость и масса	5
Размещение	6
Корпус и палуба	6
Информация о двигателе	6
ПОДРОБНОЕ ОПИСАНИЕ	7
OVERVIEW	7
Accommodations	7
Salon	7
Galley/ Dinette	7
Lower Helm	8
Master Stateroom	8
VIP Stateroom	9
Guest Stateroom	9
Fly Bridge	9
Aft Deck	10
Foredeck	10
Crew Quarters	10
Engineer Room	11
Исключения	11
Отказ от ответственности	11
ФОТОГРАФИИ	12
Starboard Profile	12
Starboard Profile	12

Aerial	12
Bow Profile	12
Port Profile	12
Aerial	12
Stern	13
Aft Deck	13
Aft Deck	13
Aft Deck	13
Aft Deck	13
Swim Platform	13
Side profile	14
Bow	14
Sunpad	14
Sunpad	14
Flybridge	14
Flybridge	14
Flybridge Sunpad	15
Flybridge Settee	15
Flybridge Helm/Lounge	15
Flybridge Lounge	15
Flybridge Helm	15
Flybridge Helm	15
Flybridge Helm	16
Flybridge	16
Wetbar	16
Detail	16
Detail	16
VIP	16
VIP	17

Guest Bathroom	17
Guest Bathroom	17
Guest Stateroom	17
Master Suite	17
Master Suite	17
Master Suite	18
Master Suite	18
Master Bathroom	18
Master Bathroom	18
Salon	18
Salon	18
Salon	19
Dinette	19
Dinette	19
Galley	19
Lower Helm	19
Lower Helm	19
Galley/Dinette	20
Engine Room	20
Engine Room	20
КОНТАКТЫ	21
Контактная информация	21
Телефоны	21
Время работы	21
Адрес	21

ХАРАКТЕРИСТИКИ

Обзор

In Spanish, Mi Sueno means “my dream”. Well, this Azimut can now be your dream for a fraction of the cost. This is the best-priced late model 53' Azimut in the entire world. The interior of Mi Sueno is warm and inviting, while still exhibiting the Italian stylishness that we've all come to love. Her full-beam master stateroom, not to mention her two additional over-sized guest cabins, will leave you convinced that this yacht is much larger than fifty-three feet. Combine this with more-than-ample exterior spaces - her flybridge alone comfortably seats eight guests – and it's no wonder why these boats aren't on the market for long.

Основная информация

Тип судна: Моторная яхта	Подкатегория: Flybridge
Модельный год: 2012	Год постройки: 2012
Страна: United States	Верх: Hardtop
Открытая палуба мостика: Да	

Размеры

Длина общая: 54' 9" (16.69m)	Ширина: 16' 2" (4.93m)
Мин. осадка: 4' 5" (1.35m)	Трапы: 17' 0" (5.18m)
Длина привального бруса: 53' 0" (16.15m)	

Скорость, вместимость и масса

Крейс. скорость: 25 Kts. (29 MPH)	Макс. скорость: 31 Kts. (36 MPH)
Водоизмещение: 59924 Pounds	Вместимость воды: 155 Gallons
Вместимость сточного бака: 59 Gallons	Объем топливного бака: 618 Gallons

Размещение

Всего кают: 3

Всего коек: 4

Спальные места: 6

Всего ком. состава: 2

Каюты экипажа: 1

Койки экипажа: 1

Спальных мест экипажа: 1

Комм. состав экипажа: 1

Корпус и палуба

Материал корпуса: Fiberglass

Комплектация корпуса: Planing

Цвет корпуса: White

Дизайнер корпуса: Stefano Righini

Дизайнер экстерьера: Stefano Righini

Информация о двигателе

Двигатели: 2

Производитель: MAN

Модель: R6 730

Тип двигателя: Inboard

Тип топлива: Diesel

ПОДРОБНОЕ ОПИСАНИЕ

OVERVIEW

In Spanish, Mi Sueno means “my dream”. Well, this Azimut can now be your dream for a fraction of the cost. This is the best-priced late model 53' Azimut in the entire world. The interior of Mi Sueno is warm and inviting, while still exhibiting the Italian stylishness that we've all come to love. Her full-beam master stateroom, not to mention her two additional over-sized guest cabins, will leave you convinced that this yacht is much larger than fifty-three feet. Combine this with more-than-ample exterior spaces - her flybridge alone comfortably seats eight guests – and it's no wonder why these boats aren't on the market for long.

Accommodations

Designing for maximum luminosity is always one of the primary goals when Azimut designs a vessel - and Mi Sueno unquestionably delivers on this front. Broad windows, skillfully integrated into the hull's design, allow light to illuminate all the three staterooms below deck. The spacious, well-appointed interior layout is far superior to any yacht in its class. As you walk through the Salon, you will find spacious seating for the whole family! The galley is masterfully integrated into the dining area, giving Mi Sueno yet another area for entertaining. Continuing forward, you will pass by the lower helm station before walking down the private staircase to the guest quarters. All the way aft you'll walk into the full-beam master suite, allowing for maximum space and a privacy. On the port side, there is a day head for everyone's convenience; adjacent to the day head is a twin guest room with side-by-side berths. The spacious forward VIP has an ensuite bath and a walk-in closet, providing for more than ample storage.

Salon

Entering the Salon through the large stainless steel-framed sliding glass doors, you immediately admire the bounty of natural light and contemporary fit & finish. In part, this is achieved through the use of Decape Oakwood, which is used throughout the vessel.

- 42" Panasonic LED TV on Hi-Lo lift
- Led Lights throughout
- Hardwood floors
- Bose Lifestyle surround sound w/ five speakers
- LG DVD player

Galley/ Dinette

The exceptional galley/dinette area offers great views all around and is masterfully integrated, creating a very sociable characteristic. It's a great place to enjoy a meal with the family when the

weather isn't perfect.

- Stainless steel sink
- Waeco 7.7.-cu.-ft. fridge/freezer
- Scot Ceran 3 burner ceramic cooktop with fiddle rail
- Panasonic 1200W High Power microwave
- Air extractor with carbon filters
- Electric windows on both port and starboard side

Lower Helm

The ideal place to run this vessel when there is unpleasant weather. The lower helm is right next to the dinette - in fact, these two areas share a particularly cool dual-function seat. And both overlook the saloon, with its huge windows.

- Dual Raymarine G120 Navigation displays
- Raymarine Auto-pilot
- Raymarine command center
- Raymarine VHF
- Raymarine tri-data display
- Quick chain counter
- Jabsco searchlight controls
- Bennett trim tab controls
- Xenta easy docking joystick
- Analog engine displays
- Digital MAN Displays
- Magnetic compass

Master Stateroom

The luxurious, full-beam master stateroom offers breathtaking views, courtesy of the large hull windows that extend almost to the waterline. They allow in an abundance of natural light. A full-size breakfast dinette to the port side is a perfect place to enjoy a cup of coffee while getting your day started.

- Full Beam Master Stateroom
- Large Ensuite bathroom with stand-alone shower
- Offset Queen bed that easy to walk around on both sides
- Built-in Dinette unit with vanity and drawers on the port side
- Two large hanging lockers
- Three additional lockers
- Set of drawers on the forward bulkhead
- Large hull side windows on both Port & Starboard sides

- Reading lights
- Panasonic 32" LED HDTV
- 6' 4" headroom throughout

VIP Stateroom

The VIP is pleasantly proportioned with a bed the same size as the master staterooms. Again, you will find large hull windows that let in volumes of natural light an ensuite head that is shared with the twin.

- Queen bed
- Ensuite Bathroom with walk-in shower
- Large walk-in closet
- Escape hatch with shade and mosquito screen
- Reading lights
- Samsung 24" LED HDTV
- 6' 4" headroom

Guest Stateroom

- Twin beds
- Bedside table
- Reading lights
- Closet with drawers and shelves
- Samsung 24" LED HDTV
- 6' 4" headroom

Fly Bridge

Every last detail was designed for the owner's comfort, from the wide open sunbathing area to the dining area and not to mention the spacious helm console. In the evenings, the moonroof is easily opened, for those nights at anchor. Top that off with a sound system to satisfy any DJ.

- Wet bar with grill
- Raymarine Platinum navigation package with flybridge camera
- Raymarine G120 Display
- Raymarine auto-pilot
- Raymarine VHF
- Bennett trim tab controls
- Quick chain counter CHC 1202 M
- Xenta maneuvering joystick
- Jabsco searchlight

- JL Audio sound system
- Vitrifrigo refrigerator
- Arimar 8 person life raft

Aft Deck

The aft deck on Mi Sueno is easily accessed by boarding doors on both the port and starboard side or if you're stern into the dock boarding is made easy with the Opacmare passerelle on the starboard side. Once, you've boarded the aft deck one is immediately surprised by the amount of space, normally found on much larger boats. The conventional aft sofa rests across the transom that comfortably seats eight. You'll find the entrance to the crew quarters on the starboard side of the sofa and an abundance of storage under the port side of the sofa.

- Bosun's lockers for cleaning supplies on both port and starboard side
- Line and fender locker on the port side under the stairs
- Starboard side locker just before entering the salon you'll find a manual bilge pump station for the engine room.
- Starboard side just before entering the salon you have a clear plexiglass, you'll find your battery switches and the Sea-Fire shutdown system
- JL audio sound system
- Raymarine navigation camera's
- Opacmare davit and controls on the starboard side
- There is a cover that encloses the entire aft deck for privacy and sun protection.
- Teak Decks
-

Foredeck

- Large sun pad with Sunbrella covers
- JL Audio enclosed bow speakers
- Quick chain foot controls for the anchor
- Delta anchor
- 246' of 10mm chain
- Sunshades on all windows
- Teak decks

Crew Quarters

- Air-conditioned crew quarters with private access from swim platform
- Ensuite Bathroom with shower
- 15" Samsung TV
- Access to all of the running gear

- Intelligent 6.5 kW stern thruster
- Opacmare Electro-hydraulic pump for passerelle
- Horizon water maker with only 23hrs of operating us as of 10/18/2018

Engineer Room

- 20kW Kohler generator with 1768hrs as of 10/18/2018
- Dual R6 730HP MAN engine with 730hrs as of 10/18/2018
- Sea-Fire Suppression system
- Easily accessible main engine sea strainers
- Dometic AC compressors with a total of 72,000 BTU
- Duplex Racor fuel filters

Исключения

При продаже яхты исключаются личные вещи владельца.

Отказ от ответственности

Компания предоставляет описание судна или яхты добросовестно, но не может гарантировать точность этой информации, а также не ручается за техническое состояние. Покупатель должен проинструктировать своих агентов или оценщиков исследовать представленную информацию более подробно, по собственному желанию. Продажа судна или яхты, изменение цены или снятие с продажи будет происходить без предварительного уведомления.

ФОТОГРАФИИ

Starboard Profile



Starboard Profile



Aerial



Bow Profile



Port Profile



Aerial



Stern



Aft Deck



Aft Deck



Aft Deck



Aft Deck



Swim Platform



Side profile



Bow



Sunpad



Sunpad



Flybridge



Flybridge



Flybridge Sunpad



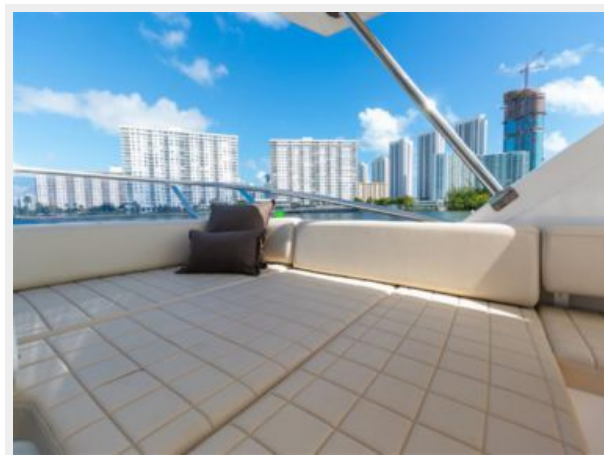
Flybridge Settee



Flybridge Helm/Lounge



Flybridge Lounge



Flybridge Helm



Flybridge Helm



Flybridge Helm



Flybridge



Wetbar



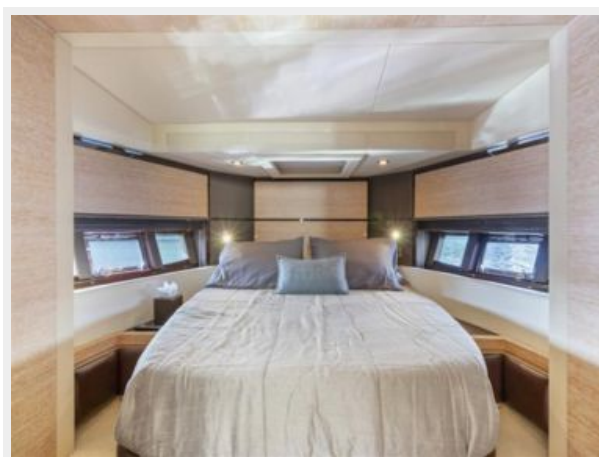
Detail



Detail



VIP



VIP



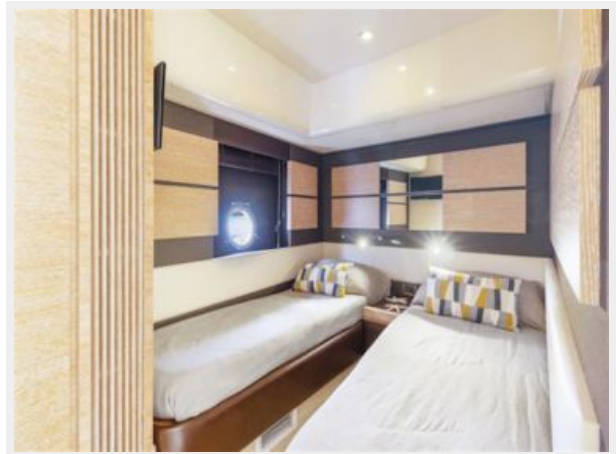
Guest Bathroom



Guest Bathroom



Guest Stateroom



Master Suite



Master Suite



Master Suite



Master Suite



Master Bathroom



Master Bathroom



Salon



Salon



Salon



Dinette



Dinette



Galley



Lower Helm



Lower Helm



Galley/Dinette



Engine Room



Engine Room



КОНТАКТЫ

Андрей Шестаков (Andrey Shestakov) – ведущий яхтенный брокер отдела продаж яхт и судов компании Shestakov Yacht Sales Inc. Официальный представитель Shestakov Yacht Sales Inc. для русскоговорящих клиентов в центральном офисе компании в Майами/Форт Лодердейл/Флорида/США.

Контактная информация

Email: andrey@shestakovyachtsales.com

Web: shestakovyachtsales.com

Телефоны

Краснодарский край: **+7(918)465-66-44**

США, Майами, Флорида: **+1(954)274-4435**

Время работы

Понедельник – Суббота: **9:00 - 21:00**
EDT

Воскресенье: **Закрито**

Адрес



Harbour Towne Marina, 850 NE 3rd St,
STE 213, Dania, FL 33004