

CHOCTAW BRAVE — COM PAC



Судостроитель: COM PAC

Год постройки: 2001

Модель: Представительская парусная яхта

Цена: ЦЕНА ЯХТЫ ПО ЗАПРОСУ

Местонахождение: United States

Длина общая: 37' 0" (11.28m)

Ширина: 11' 10" (3.61m)

Макс. осадка: 4' 0" (1.22m)

Купить Choctaw Brave — COM PAC а также выбрать подходящую вам яхту из нашего каталога яхт вам поможет опытный яхтенный брокер Андрей Шестаков. На сегодняшний день компания Shestakov Yacht Sales Inc. имеет большое количество яхт в собственном списке продаж, а также тесно сотрудничает со всеми крупными яхтенными производителями по всему миру.

Для того чтобы купить яхту Choctaw Brave — COM PAC а также проконсультироваться по любому вопросу связанному с покупкой, продажей, чартером яхт позвоните по телефону **+7(918)465-66-44**.

ОГЛАВЛЕНИЕ

ОГЛАВЛЕНИЕ	2
ХАРАКТЕРИСТИКИ	4
Обзор	4
Основная информация	4
Размеры	5
Скорость, вместимость и масса	5
Размещение	5
Корпус и палуба	5
Информация о двигателе	5
ПОДРОБНОЕ ОПИСАНИЕ	6
Electronics	6
Sails and Rigging	6
Inside Equipment	6
Electrical Equipment	6
Outside Equipment/Extras	6
Covers	6
New in 2016	6
Additional Information	7
Designer's Comments by Charley Morgan	8
Manufacture Provided Description	9
Исключения	10
Отказ от ответственности	10
ФОТОГРАФИИ	11
КОНТАКТЫ	20
Контактная информация	20
Телефоны	20
Время работы	20
Адрес	20

ХАРАКТЕРИСТИКИ

Обзор

**Caribbean Ocean Cruiser with
Rare 4.0 Draft & 49.5' Mast Height
in Excellent Condition!**

Priced just reduced - owner wants her sold!. “Designed for the experienced sailor stepping up from a smaller boat who wants to sail offshore...The boat’s speed and maneuverability in light air is impressive. The keel provides shoal draft with minimal cost to performance. The boat points well and goes as fast as other boats that we might call ‘moderate-performance cruisers’...*Practical Sailor. September 2014*”

A semi-custom sailboat nicely outfitted when originally commissioned, highlights include; roller furled genoa, full cockpit enclosure, flexible solar panels that zip into the bimini, dinghy davits, bow thruster, electric Lewmar self-tailing winch, 4 KW diesel generator, Air Conditioning, Radar, Shoal Draft 4.0, ICOM SSB and weatherfax. Modified cutter-rigged with staysail flying!

She has been well maintained and shows it! Call now for a showing!

“Gerry Hutchins and crew have built a well-designed cruising boat. It'll do well from the shallow Bahamas cruising grounds to the rigors of Lake Superior and everything in between. From a hot and cold cockpit shower to a custom stainless bow pulpit with two built-in anchor rollers, from the foot of her keel-stepped mast to a roller-furler for her headsail, the 35 encompasses an impressive array of what's best for cruising today. She incorporates innovation where innovation counts while maintaining clean lines and brushes of tradition...*Captain Thom Burns publisher, Sailing Breezes.*”

Основная информация

Тип судна: Представительская парусная **Подкатегория:** Крейсерская яхта
яхта

Модельный год: 2001

Год постройки: 2001

Страна: United States

Размеры

Длина общая: 37' 0" (11.28m)

Длина по ватерлинии: 29' 0" (8.84m)

Ширина: 11' 10" (3.61m)

Макс. осадка: 4' 0" (1.22m)

Трапы: 49' 5" (15.06m)

Скорость, вместимость и масса

Водоизмещение: 12500 Pounds

Вместимость воды: 75 Gallons

Объем топливного бака: 30 Gallons

Размещение

Всего кают: 3

Всего коек: 3

Всего ком. состава: 1

Корпус и палуба

Материал корпуса: Fiberglass

Дизайнер корпуса: Charley Morgan, N.A.

Информация о двигателе

Двигатели: 1

Производитель: Westerbeke

Модель: 30B

Тип двигателя: Inboard

Тип топлива: Diesel

ПОДРОБНОЕ ОПИСАНИЕ

Electronics

Depthsounder Repeater(s) Radar Wind speed and direction Plotter Radar Detector VHF GPS
Log-speedometer Compass Radio TV set CD player Autopilot

Sails and Rigging

Sails Furling genoa - 135% Fully battened mainsail **Rigging** Electric winch

Inside Equipment

Refrigerator Electric bilge pump Air conditioning Bow thruster Manual bilge pump Hot water
Marine head Battery charger Microwave oven Oven

Electrical Equipment

Shore power inlet Generator

Outside Equipment/Extras

Solar panel Cockpit table Cockpit cushions Cockpit shower Swimming ladder Davits Radar
reflector Electric windlass

Covers

Bimini Top Mainsail cover Genoa cover

New in 2016

- Mainsail, full batten, loose foot, two reef points
- Mainsail halyard
- Topping lift
- Dutchman mainsail flaking system
- Mainsail cover
- Standard Horizon GX1700 VHF radio in cockpit with RAM mic at nav station
- Vyacht multiplexer/ Wifi access point
- Yacht thruster external bow thruster with dedicated battery and charger

- Lewmar 40EST EVO ELS-Series Electric Self Tailing Winch, coachroof, stbd
- Two Trojan Group 27 house batteries
- 200ft G4 anchor chain
- Hatch covers
- Bottom paint.

Additional Information

Mechanical Equipment

Westerbeke Diesel 30B 27 HP with 1270 hours

4 KW Diesel generator: Fresh water cooled, with stainless steel sound enclosure, control panel with ship/shore switch & gauges

Spars, Sails & Rigging

Keel stepped anodized aluminum mast.

Mainsail - Dacron, full batten, Dutchman flaking.

2 single line reefing systems.

Genoa - 135% Dacron on Harken roller furling, with acrylic canvas sun strip.

Roller furled Staysail

All Harken deck hardware.

All sail control lines led to cockpit.

A total of six winches:

- Lewmar electric winch on coachroof for the main halyard, main sheet and first reef point
- Harken 32.2 STC self tailing winch on coachroof for main sheet, halyards, and reefing lines.
- 2 Harken 32.2 STC self tailing secondary winches
- 2 Harken 40.2 STC two speed self-tailing jib sheet winches.

Galley:

"L" shaped galley

Double stainless sink with retractable hot/cold spray faucet.

2 burner, gimbaled Origo stove with oven

Microwave oven

Large icebox with Adler Barbour refrigeration

Cabin:

3 Cabin layout - forward, salon, and aft cabins, each with double berth.

Air Conditioning: 16,000 BTU, reverse cycle.

Hanging lockers in forward and aft cabins

Navigation station with large, easily serviced electronics cabinet.

"L" shaped dinette with drop leaf table.

Large tableback dinnerware storage cabinet.

Dinette converts to double berth.

Entertainment center with stereo, TV, VCR

4 stereo speakers - two main salon, two cockpit.

Navigation Systems:

Raymarine ST-60 depth, wind, speed/log, tridata, radar/chartplotter

Icom SSB and weatherfax

Electrical System:

AC and DC electrical systems.

Master electrical panel has AC/DC breakers, volt and amp gauges, expandable for optional equipment.

3 maintenance free AGM batteries: 1 cranking, 2 house, with switching.

20 amp 3 bank automatic charger.

12 volt service throughout with multiple 12 volt outlets, 12 volt lighting.

Masthead anchor light.

Mid-mast steaming and deck light combination.

Engine room light.

Designer's Comments by Charley Morgan

I was delighted when the Hutchins family asked me to design a new yacht as the latest addition to Com-Pac Yacht's line"

The Com-Pac development and marketing team had few limitations beyond - It must be shoal draft, stable, sea kindly, and fast enough to give good results under PHRF rules.

We knew we couldn't go wrong relying on the tried and true Herreshoff practice of combining generous sailplan, moderate displacement, long waterline, generous beam, high ballast/displacement ratio and the redeeming benefits of shoal draft, made amazingly efficient using the famous Henry Scheel Keel configuration. The final result is the Com-Pac 35. We have presented a hull and keel combination that in conjunction with the sailplan will give the maximum performance possible without sacrificing the comfort and convenience you have come to expect from Com-Pac Yachts. A traditionally styled, shoal draft, cruising yacht? YES! A high tech, performance-oriented underbelly and sailplan, establishing if desired, a club-racing contender? YES!

The 12' beam allows for a voluminous interior. From the aft cabin with double berth to the forward cabin with a large sea-going V-berth, every inch of the Com-Pac 35 interior has been completely thought out with the cruising sailor in mind. The interior is complete, private, comfortable, and functional. An interesting adjunct to the livability of the Com-Pac 35 is the integrating of stereo, television, video player, and microwave oven as standard equipment.

The most exciting part of this project has been the design concept. While we have maintained all the principles that have made Com-Pac a success, such as, traditional styling, cruising comfort, quality construction, and competitive pricing, the new Com-Pac 35 will herald the beginning of a new concept for a Com-Pac Yacht. Scheel Keel, "Euro-style" transom, hardware selection, interior layout and overall appearance are but a few of the obvious items that attest to the Hutchins Company's desire to offer a no nonsense, premium quality yacht that embodies all the elements necessary in today's demanding marketplace.

I am proud to be a part of the Hutchins Company's continuing program of design and development.

--Charley Morgan

Manufacture Provided Description

The Com-Pac 35 was designed to be shoal-draft, stable, seakindly and fast. Performance is achieved by combining generous sail plan, moderate displacement, long waterline, generous beam, high ballast-displacement ratio and the redeeming benefits of the shoal-draft Scheel Keel. Beating to windward or running before the wind, full sail or reefed, the Com-Pac 35 is responsive and swift. This is a no-nonsense, premium quality yacht. The 12-foot beam allows for a voluminous interior. From the aft cabin with double berth to the forward cabin with a large, sea-going V-berth, every inch of the interior has been thought out with the cruising sailor in mind. The accommodations are logical and orderly, and of a styling that is neither space-age modern nor

19th century traditional, but is rather timeless and elegant. An interesting adjunct to the livability of the Com-Pac 35 is the integration of stereo, television, video player and microwave oven as standard equipment.

Исключения

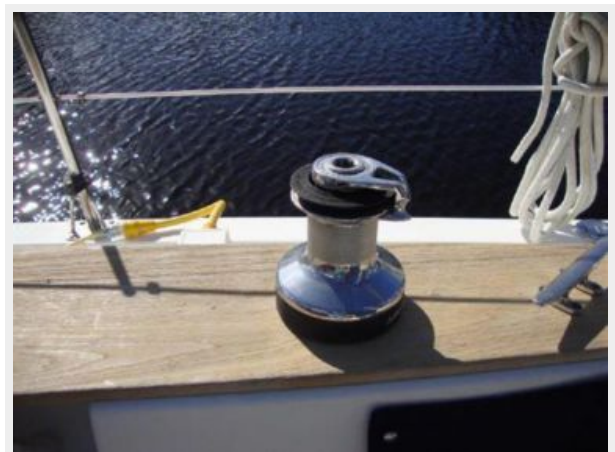
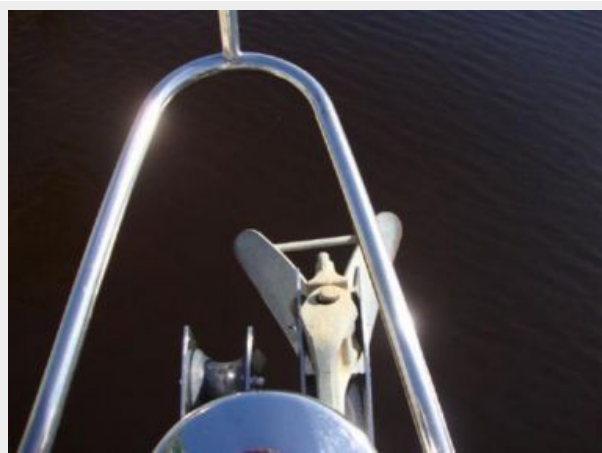
При продаже яхты исключаются личные вещи владельца.

Отказ от ответственности

Компания предоставляет описание судна или яхты добросовестно, но не может гарантировать точность этой информации, а также не ручается за техническое состояние. Покупатель должен проинструктировать своих агентов или оценщиков исследовать представленную информацию более подробно, по собственному желанию. Продажа судна или яхты, изменение цены или снятие с продажи будет происходить без предварительного уведомления.

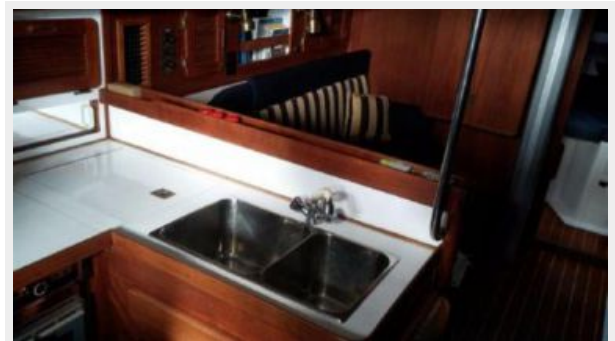
ФОТОГРАФИИ







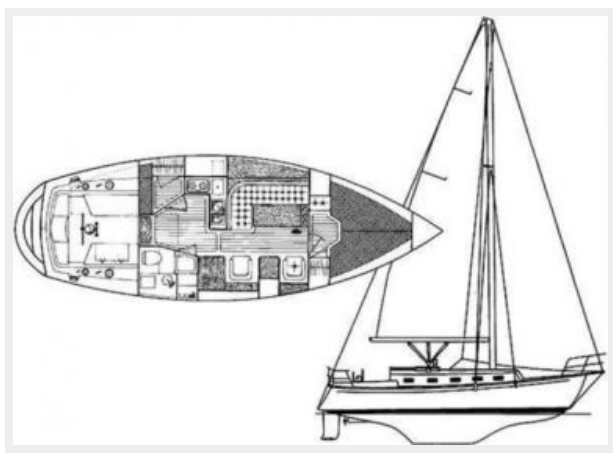
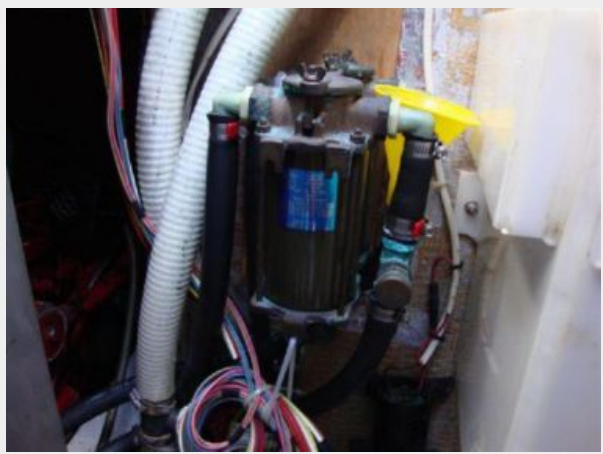












КОНТАКТЫ

Андрей Шестаков (Andrey Shestakov) – ведущий яхтенный брокер отдела продаж яхт и судов компании Shestakov Yacht Sales Inc. Официальный представитель Shestakov Yacht Sales Inc. для русскоговорящих клиентов в центральном офисе компании в Майами/Форт Лодердейл/Флорида/США.

Контактная информация

Email: andrey@shestakovyachtsales.com

Web: shestakovyachtsales.com

Телефоны

Краснодарский край: **+7(918)465-66-44**

США, Майами, Флорида: **+1(954)274-4435**

Время работы

Понедельник – Суббота: **9:00 - 21:00**
EDT

Воскресенье: **Закрето**

Адрес



Harbour Towne Marina, 850 NE 3rd St,
STE 213, Dania, FL 33004