

STARGATE — ALLIED PRINCESS



Судостроитель: ALLIED PRINCESS

Год постройки: 1975

Модель: Крейсерский кеч

Цена: **ЦЕНА ЯХТЫ ПО ЗАПРОСУ**

Местонахождение: United States

Длина общая: 36' 0" (10.97m)

Ширина: 11' 0" (3.35m)

Макс. осадка: 4' 5" (1.35m)

Крейс. скорость: 5 Kts. (6 MPH)

Макс. скорость: 6 Kts. (7 MPH)

Купить Stargate — ALLIED PRINCESS а также выбрать подходящую вам яхту из нашего каталога яхт вам поможет опытный яхтенный брокер Андрей Шестаков. На сегодняшний день компания Shestakov Yacht Sales Inc. имеет большое количество яхт в собственном списке продаж, а также тесно сотрудничает со всеми крупными яхтенными производителями по всему миру.

Для того чтобы купить яхту Stargate — ALLIED PRINCESS а также проконсультироваться по любому вопросу связанному с покупкой, продажей, чартером яхт позвоните по телефону **+7(918)465-66-44**.

ОГЛАВЛЕНИЕ

ОГЛАВЛЕНИЕ	2
ХАРАКТЕРИСТИКИ	6
Обзор	6
Основная информация	7
Размеры	7
Скорость, вместимость и масса	7
Размещение	7
Корпус и палуба	7
Информация о двигателе	8
ПОДРОБНОЕ ОПИСАНИЕ	9
Accommodations	9
Galley	9
Sails and Rigging	9
Electronics and Electrical	10
Hull and Deck	10
Engine and Mechanical	10
Safety	11
Exclusions	11
Исключения	11
Отказ от ответственности	12
ФОТОГРАФИИ	13
Profile_Stbd Bow	13
Foredeck & Cabintop	13
Dorades & Cabintop	13
Profile_Bow	13
Under Sail	14
Profile_Port	14
Cabintop & New Hatch Plexi	14

Sails_New Jib & reconditioned Main	14
Profile_Bow Pulpit & Anchor	15
Bimini & Stbd Cockpit	15
Cockpit Detail	15
Helm	15
Cockpit Coaming & Smart Plugs	15
Cockpit Coaming Detail	15
Cockpit Dorade Vent	16
Wide Side Decks_Stbd	16
Wide Side Decks_Port	16
Profile_Port Hauled & Full Keel	16
Profile_Port Bow in Slings	16
Profile_Stern & Rudder	16
Rudder & Protected 3-Blade Prop	17
Rudder & Prop Detail	17
Layout Drawings	17
Salon_Looking Forward	17
Salon_Looking Aft	18
Refrigeration_Large Evaporator	18
Galley_SS Sink & New Faucet	18
3-Burner Propane SS Stove & Oven	18
Built-to-Circumnavigate Plaque	18
Companionway Stairs & Engine Access	18
Salon Settee_Stbed	19
Salon_Storage Behind Stbd Settee	19
Salon_Storage Behind Stbd Backrest	19
Salon Forward Bulkhead & Passageway	19
Salon_Port Settee	19
Salon_Port Settee	19

Salon_Storage Above Port Settee	20
Salon_Aft & Quarterberth	20
Salon_Port	20
Nav Table Detail	20
Propane Heater	20
Quarterberth & Nav Table	20
Salon Deck Hatch_New Plexi	21
Nav Table_3 VHF Radios	21
Quarterberth_Versatile as Storage	21
AC & DC Electrical Panels at Galley	21
Salon Storage Under Settees	21
Storage opposite Head	21
Head Cabinetry & Opening Port	22
Head_Electric Toilet & Hot & Cold Shower	22
Head Door & Decor	22
Head H/C Shower	22
V-Berth Door & Drawers	23
V-Berth Sink & Vanity_Port	23
Salon View from V-Berth	23
V-Berth Cabinet Closed_Stbd	23
V-Berth Hanging Locker Open_Stbd	23
V-Berth Cabinetry_Stbd	23
V-Berth Cabinetry_Aft Port	24
V-Berth View from Salon	24
V-Berth	24
V-Berth_Port	24
V-Berth_Storage Below	24
Engine Top Access	24
Engine Instrument Panel	25

Garmin 640 GPS Display	25
Digital Depth & Autopilot	25
Autopilot Display & Control	25
Digital Depth Display	25
VHF_Standard Horizon with DSC	25
A/C_Digital Display Upgraded	26
Compass_Ritchie Powerdamp	26
Propane Locker in Cockpit	26
Access to Steering & Rudder Post	26
Manuals_Complete Set for all onboard Systems	27
New 90 gal. Fuel Tank	27
КОНТАКТЫ	28
Контактная информация	28
Телефоны	28
Время работы	28
Адрес	28

ХАРАКТЕРИСТИКИ

Обзор

Stargate is a 1975 Allied 36 Princess Ketch; purpose-built to circumnavigate the world; and in her current exceptional condition: you can do it in style!! Her loving and caring owners bought her in 2016 and invested heavily in refitting her for safe and trouble-free cruising adventures. Nothing was left untouched with the following upgrades since 2016, including:

- Sails,
- Spars,
- Standing & Running Rigging,
- Interior & Exterior Paint,
- Interior & Exterior LED lighting,
- Lifelines with 4 Gates,
- Westerbeke 30hp Diesel Overhauled,
- Engine Instrumentation,
- 65A Alternator,
- Throttle Cable,
- Pressure Water Pump,
- A/C Digital Controller,
- Jabsco Electric Toilet,
- Faucets,
- Hot Water Heater,
- Battery Charger,
- Propane Tanks,
- Marinetec SS Propane Gimbale 3-Burner Stove & Oven,
- Custom Cabinetry & Extra Drawers,
- All Soft-Goods; Curtains, Upholstery, Cushions
- Bimini,
- Sailcover,
- Navigation Electronics,
- Thru-Hulls and Sea-Cocks,
- Bottom Painted with Anti-fouling Paint

If you are looking for a turn-key, ready to cruise proven bluewater Ketch, don't miss this opportunity to purchase one of the best examples of this all-time favorite of serious offshore sailors. Call today to schedule a personal inspection.

BONUS: This vessel is located at the St. Petersburg Municipal Marina in a transferable slip located in beautiful and vibrant Downtown St. Pete on Tampa Bay where there is a 2-3 year wait for slips.

Основная информация

Тип судна: Крейсерский кеч

Модельный год: 1975

Год постройки: 1975

Страна: United States

Размеры

Длина общая: 36' 0" (10.97m)

Длина по ватерлинии: 27' 9" (8.46m)

Ширина: 11' 0" (3.35m)

Макс. осадка: 4' 5" (1.35m)

Скорость, вместимость и масса

Крейс. скорость: 5 Kts. (6 MPH)

Макс. скорость: 6 Kts. (7 MPH)

Водоизмещение: 15400 Pounds

Вместимость воды: 40 Gallons

Вместимость сточного бака: 40 Gallons

Объем топливного бака: 90 Gallons

Размещение

Всего кают: 2

Всего коек: 4

Всего ком. состава: 1

Корпус и палуба

Материал корпуса: Fiberglass

Информация о двигателе

Двигатели: 1

Производитель: Westerbeke

Модель: 4-71

Тип двигателя: Inboard

Тип топлива: Diesel

ПОДРОБНОЕ ОПИСАНИЕ

Accommodations

- Interior professionally repainted inside (2016)
- V- Berth Mattress professionally sanitized (2016)
- All salon cushions replaced (2016)
- New Salon Bench with storage behind back-rest built by professional carpenter (2016)
- New V- berth Fan installed (2016)
- Two new LED spotlights installed In galley and on chart desk (2016)
- Three new Cabin Lights installed (2016)
- All Curtains and Rods replaced over post holes(2016)
- New Microwave oven installed (2016)
- Boat fumigated for insects-now covered under transferable warranty (2017)
- Ocean Breeze 12,000 BTU Air Conditioner
- Head: Electric Jabsco Toilet (2017) w/Shower & Vanity

Galley

- Marinetic SS Gimbale Propane 3-Burner Stove & Oven (2016)
- Adler Barbour 12V Refrigeration system w/ Freezer
- Magic Chief Microwave (2016)
- New Faucet in galley sink installed (2016)
- Deep SS Sink with H/C Pressure Water
- Storage Above & Below Countertops

Sails and Rigging

- All sails (jib, main, and mizzen) taken to a sail loft and professionally examined, sails re-stitched and reinforced, all metal slide hardware replaced (2017)
- 110% Jib new in 2017.
- Toggle fitting at top of Headstay replaced (2016)
- Fenders replaced (2016)
- Life lines replaced with three additional openings added (2017)
- All sheets and dock lines replaced(2017)
- Main Boom & Mizzen Boom removed, sanded, primed, repainted, and reinstalled (2017)
- Mainsail and Mizzen sail covers professionally re-stitched and zippers replaced (2017)
- Boom Vang for both main and mizzen booms professionally inspected and repaired (2017)
- Spreaders on main mast and mizzen mast repainted (2017)

Electronics and Electrical

- Garmin 640 GPS Chart Plotter (2016)
- AutoHelm ST6000 Auto Pilot
- Raymarine ST-60 Digital Depth Display
- Standard Horizon Explorer VHF with DSC (2016)
- Uniden Hand-Held Submersible VHF (2018)
- Standard Horizon Hand-Held VHF submersible HX2HO
- Standard Horizon Hand-Held VHF Hx150 Radio
- Kenyon Analog Speed Display
- Ritchie Binnacle Compass
- Kenyon Magnetic Compass inspected, cleaned, Recalibrated and teak support refinished (2018)
- Floodlights on main mast spreaders professionally replaced with brighter LED type (2017)
- Steaming light replaced with brighter LED type (2017)
- Red & Green navigation lights and teak supports replaced (2017)
- Both forward and aft bilge pumps and float switches replaced (2017)
- New battery charger installed (2017)
- 30 amp shore power cable replaced 50ft (2017)
- 30 amp shore power cable extension added 7ft (2017)

Hull and Deck

- 2 Bariant SS Primary Winches
- Exterior Self-Contained Propane locker (2017)
- Fortress FX-20 Aluminum Anchor, chain & nylon rode
- 25# CQR Anchor, chain & nylon rode
- Harken Roller Furling Head-sail system
- LED lights on deck spreader (2017)
- Boat professionally painted inside & out (2016)
- Boat hauled out and hull repainted with anti-fouling paint(2016)
- All bright work refinished (2016)
- Rubber matting installed in cockpit (2018)
- Bimini professionally replaced(2017)
- All 7 flotation cushions replaced (2016)
- Captain's helm seat added (2016)

Engine and Mechanical

- Westerbeke 4-91 25hp Diesel engine, professionally removed, disassembled, engine and transmission heat exchanger cleaned, all hardware inspected and replaced as needed, pencil zincs replaced, engine mounts replaced, tested on test stand and professionally

reinstalled (2016)

- Engine Hours: SMOH 1,070 as of (May 2018)
- All engine instruments professionally replaced: Fuel Gauge, Tachometer, Ammeter, Hour Meter, Oil Pressure, and Engine Temperature (2016)
- Fuel-water separator and filter assembly replaced for engine(2018)
- Engine raw seawater shutoff valve and thru hull replaced (2016)
- Engine Alternator professionally replaced with larger model(65 amp instead of 50)(2017)
- Engine throttle cable replaced (2016)
- Propeller shaft seal inspected and repacked as needed
- Propeller sacrificial zinc replaced
- New hot water heater installed (2017)
- Cozy cabin heater model 1000 Force 10 propane fueled
- New water pressure pump installed
- Fresh water tank professionally tested for safety(Passed)
- 30 Gallon Fuel Tank Replaced (2013)
- New Jabsco electric head installed and all hoses replaced (2016)
- H/C Pressure Hand shower installed in Head (2016)
- A/C thermostat professionally replaced(2017)
- Entire A/C system professionally inspected and repaired(2017)
- New faucet in V- berth sink installed (2017)
- Aft bilge pump thru-hull replaced (2017)
- Additional propane tank installed (now one #5 and one #10 installed in sealed helm box (2017)
- Engine professionally inspected an part of annual service (2018)

Safety

- Emergency signal flares replaced (2016)
- Two fire extinguishers added; now a total of 3 (2016)

Exclusions

Excluded are personal and other items found onboard during inspection or shown in photos on Central Listing Agent's Website that are not specifically described in text of the Listing Specifications. However, all safety items that are onboard during inspections that are required by the USCG, as well as a minimum number of dock lines, fenders, and boat hooks to safely operate and dock the vessel are included, whether identified in the Web Description or not.

Исключения

При продаже яхты исключаются личные вещи владельца.

Отказ от ответственности

Компания предоставляет описание судна или яхты добросовестно, но не может гарантировать точность этой информации, а также не ручается за техническое состояние. Покупатель должен проинструктировать своих агентов или оценщиков исследовать представленную информацию более подробно, по собственному желанию. Продажа судна или яхты, изменение цены или снятие с продажи будет происходить без предварительного уведомления.

ФОТОГРАФИИ

Profile_Stbd Bow



Foredeck & Cabintop



Dorades & Cabintop



Profile_Bow



Profile_Port



Under Sail



Cabintop & New Hatch Plexi



Sails_New Jib & reconditioned Main



Profile_Bow Pulpit & Anchor



Bimini & Stbd Cockpit



Cockpit Detail



Helm



Cockpit Coaming & Smart Plugs



Cockpit Coaming Detail



Cockpit Dorade Vent



Wide Side Decks_Stbd



Wide Side Decks_Port



Profile_Port Hauled & Full Keel



Profile_Port Bow in Slings



Profile_Stern & Rudder



Rudder & Protected 3-Blade Prop

Rudder & Prop Detail



Layout Drawings



Salon_Looking Forward



Salon_Looking Aft



Refrigeration_Large Evaporator



Galley_SS Sink & New Faucet



3-Burner Propane SS Stove & Oven



Built-to-Circumnavigate Plaque



Companionway Stairs & Engine Access



Salon Settee_Stbed



Salon_Storage Behind Stbd Settee



Salon_Storage Behind Stbd Backrest



Salon Forward Bulkhead & Passageway



Salon_Port Settee



Salon_Port Settee



Salon_Storage Above Port Settee



Salon_Aft & Quarterberth



Salon_Port



Nav Table Detail



Propane Heater



Quarterberth & Nav Table



Salon Deck Hatch_New Plexi



Nav Table_3 VHF Radios



Quarterberth_Versatile as Storage



AC & DC Electrical Panels at Galley



Salon Storage Under Settees



Storage opposite Head



Head Cabinetry & Opening Port



Head_Electric Toilet & Hot & Cold Shower



Head Door & Decor



Head H/C Shower



V-Berth Door & Drawers



V-Berth Sink & Vanity_Port



Salon View from V-Berth



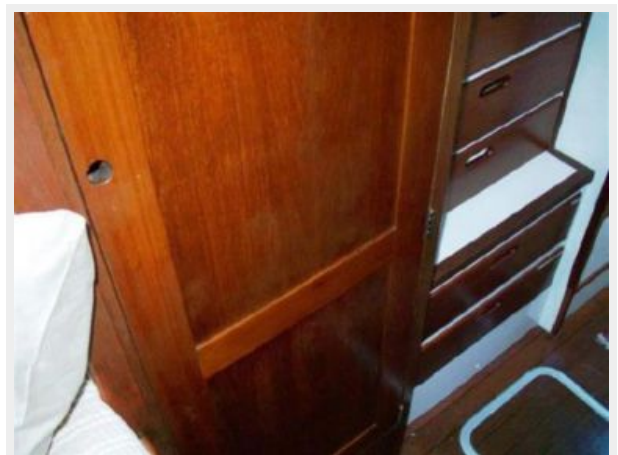
V-Berth Cabinet Closed_Stbd



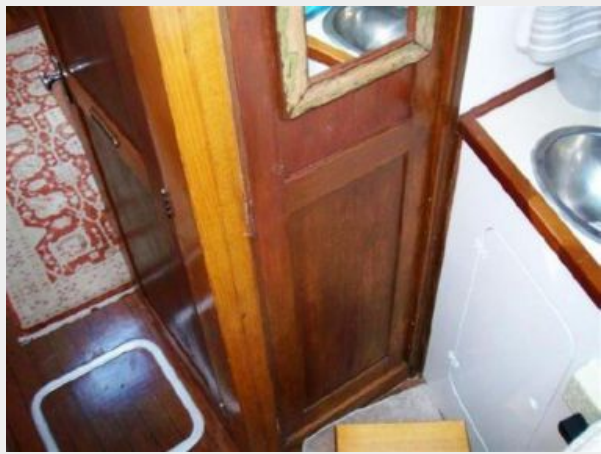
V-Berth Hanging Locker Open_Stbd



V-Berth Cabinetry_Stbd



V-Berth Cabinetry_Aft Port



V-Berth View from Salon



V-Berth



V-Berth_Port



V-Berth_Storage Below



Engine Top Access



Engine Instrument Panel



Garmin 640 GPS Display



Digital Depth & Autopilot



Autopilot Display & Control



Digital Depth Display



VHF_Standard Horizon with DSC



Compass_Ritchie Powerdamp



A/C_Digital Display Upgraded



Propane Locker in Cockpit



Access to Steering & Rudder Post



New 90 gal. Fuel Tank



Manuals_Complete Set for all onboard Systems



КОНТАКТЫ

Андрей Шестаков (Andrey Shestakov) – ведущий яхтенный брокер отдела продаж яхт и судов компании Shestakov Yacht Sales Inc. Официальный представитель Shestakov Yacht Sales Inc. для русскоговорящих клиентов в центральном офисе компании в Майами/Форт Лодердейл/Флорида/США.

Контактная информация

Email: andrey@shestakovyachtsales.com

Web: shestakovyachtsales.com

Телефоны

Краснодарский край: **+7(918)465-66-44**

США, Майами, Флорида: **+1(954)274-4435**

Время работы

Понедельник – Суббота: **9:00 - 21:00**
EDT

Воскресенье: **Закрито**

Адрес



Harbour Towne Marina, 850 NE 3rd St,
STE 213, Dania, FL 33004