

36 1989 CATALINA 36 — CATALINA



Builder: CATALINA

Year Built: 1989

Model: Cruising Sailboat

Price: PRICE ON APPLICATION

Location: United States

LOA: 36' 0" (10.97m)

Beam: 11' 11" (3.63m)

Max Draft: 4' 3" (1.30m)

Our experienced yacht broker, Andrey Shestakov, will help you choose and buy a yacht that best suits your needs 36 1989 Catalina 36 — CATALINA from our catalogue. Presently, at Shestakov Yacht Sales Inc., we have a wide variety of yachts available on our sale's list. We also work in close contact with all the big yacht manufacturers from all over the world.

If you would like to buy a yacht 36 1989 Catalina 36 — CATALINA or would like help answering any questions concerning purchasing, selling or chartering a yacht, please call +1(954)274-4435

TABLE OF CONTENTS

TABLE OF CONTENTS	2
SPECIFICATIONS	3
Overview	3
Basic Information	3
Dimensions	3
Speed, Capacities and Weight	3
Accommodations	4
Hull and Deck Information	4
Engine Information	4
DETAILED INFORMATION	5
Information	5
Exclusions	6
Disclaimer	6
PHOTOS	7
CONTACTS	15
Contact details	15
Telephones	15
Office hours	15
Address	15

SPECIFICATIONS

Overview

Spent most of her life in fresh water and it shows.

Unique opportunity to buy a CRUISE READY boat now and head for the island

The Catalina 36 is one of the most spacious vessels for its size ever designed. There is a reason that it has been so popular for so long.

Oversized V berth along with queen sized aft berth

Many recent upgrades

- new main and stack pack
- new interior upholstery
- new bimini
- dodger almost new
- and much more

She is a "Bluewater Ready" boat

Basic Information

Category: Cruising Sailboat

Model Year: 1989

Year Built: 1989

Country: United States

Dimensions

LOA: 36' 0" (10.97m)

Beam: 11' 11" (3.63m)

Max Draft: 4' 3" (1.30m)

Speed, Capacities and Weight

Displacement: 15000 Pounds

Water Capacity: 75 Gallons

Holding Tank: 17 Gallons

Fuel Capacity: 25 Gallons

Accommodations

Total Cabins: 2

Total Heads: 1

Hull and Deck Information

Hull Material: Fiberglass

Engine Information

Engines: 1

Manufacturer: Universal

Model: M25XP

Engine Type: Inboard

Fuel Type: Diesel

DETAILED INFORMATION

Information

Accommodations

The Catalina 36 is well known for the spacious layout. The salon's port dinette converts to a double berth. The two seats and game table to starboard can be made into a settee or single berth. There is ample storage under, behind, and outboard of the seating. Cabin fans and a large companionway protected by a dodger give superior ventilation below decks. The teak interior grab rails make movement below decks safe and secure in a seaway.

Nine opening port lights, 4 fixed ports, 2 skylight hatches and the companionway provide excellent natural light. There is a good mix of DC & AC

The master forward cabin has a comfortable V berth w/filler cushion, reading lights, hanging locker, shelves, drawers, deck hatch, port and starboard opening ports.

The head compartment is to port with head, countertop w/ sink, handheld shower, shower sump pump, and opening port.

The U-shaped galley to port has storage galore, near center line deep stainless steel double sinks with hot and cold pressure water with a 6 gallon, 110v AC/engine heated hot water heater, a large, top loading, insulated refrigeration w/freezer, and a two burner propane stove w/oven and microwave.

The forward facing navigation station is to starboard across from the galley. The chart table is large with ample related lockers and room for an array of electronics.

The aft stateroom has a comfortable double berth with stand-up headroom. Two opening ports, a solar fan, and cabin fan keep the air moving.

Electronics and Electrical

Garmin GPS Chartplotter

Datamarine Depth Indicator

Datamarine Wind Indicator

Raymarine Autopilot

Ritchie Compass

Engines

Universal M25XP Universal Diesel Inboard

approximately 2000 hours

Tankage

Fresh Water 75 gallons in 3 tanks

Waste 17 gallons

Fuel 25 gallons

Exclusions

Owner's personal belongings.

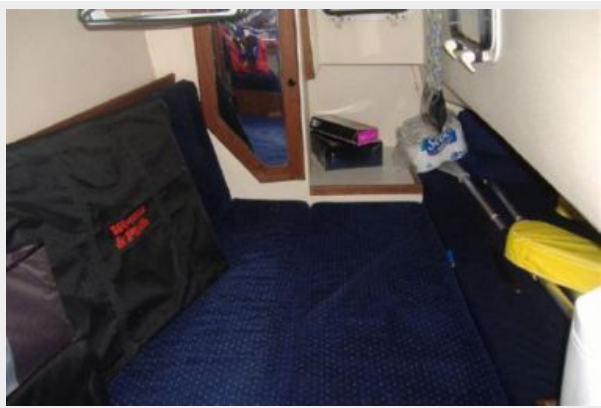
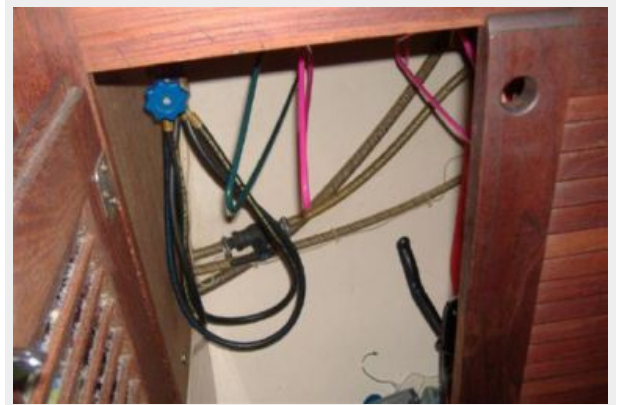
Disclaimer

The Company offers the details of this vessel or yacht in good faith but cannot guarantee or warrant the accuracy of this information nor warrant the condition of the vessel. A buyer should instruct his representatives, agents, or his surveyors, to investigate such details as the buyer desires validated. This vessel or yacht is offered subject to prior sale, price change, or withdrawal without notice.

PHOTOS

















CONTACTS

Andrey Shestakov, leading yacht broker of the sales department of Shestakov Yacht Sales Inc. Shestakov Yacht Sales Inc., the official representative of the Miami/Fort Lauderdale FL headquarters.

Contact details

Email: andrey@shestakovyachtsales.com

Web: shestakovyachtsales.com/en/

Telephones

USA: +1(954)274-4435

Office hours

Monday – Saturday: **9:00 - 21:00** EDT

Sunday: **closed**

Address



Harbour Towne Marina, 850 NE 3rd St,
STE 213, Dania, FL 33004