

## YANKARI — HATTERAS



**Builder:** HATTERAS

**Year Built:** 1988

**Model:** Motor Yacht

**Price:** PRICE ON APPLICATION

**Location:** United States

**LOA:** 40' 0" (12.19m)

**Beam:** 13' 7" (4.14m)

**Max Draft:** 4' 9" (1.45m)

Our experienced yacht broker, Andrey Shestakov, will help you choose and buy a yacht that best suits your needs Yankari — HATTERAS from our catalogue. Presently, at Shestakov Yacht Sales Inc., we have a wide variety of yachts available on our sale's list. We also work in close contact with all the big yacht manufacturers from all over the world.

If you would like to buy a yacht Yankari — HATTERAS or would like help answering any questions concerning purchasing, selling or chartering a yacht, please call +1(954)274-4435

# TABLE OF CONTENTS

TABLE OF CONTENTS	2
SPECIFICATIONS	3
Overview	3
Basic Information	3
Dimensions	3
Speed, Capacities and Weight	4
Accommodations	4
Hull and Deck Information	4
Engine Information	4
DETAILED INFORMATION	5
Generator	5
Master Head	5
Forward Stateroom	5
Galley	5
Fore/Aft Deck Areas	6
Electrical	6
ENGINE ROOM	6
Electronics	7
Master Stateroom	7
Exclusions	7
Disclaimer	7
PHOTOS	8
CONTACTS	20
Contact details	20
Telephones	20
Office hours	20
Address	20

---

# SPECIFICATIONS

---

## Overview

---

Fresh Buff And Wax on 2/5/2018

Fresh Bottom Job And Zinc's On 2/3/2018

Dropped both Rudders And Repacked 2/4/2018

New Line Cutters On Prop Shafts 2/4/2018

Inflatable Tender with Yamaha 2 Stroke

New Motors From Cat Installed in 2001

Engine Hours Are 210 Motors look New

Very Well Maintained

Same Owner For 25 Years

Custom Cabinets And Pantry

Thousands of Dollars In Spare Parts Come With The Boat

Yankari Has Been Equipped To Be Anchored On The Hook For Long Periods

## Basic Information

---

**Category:** Motor Yacht

**Model Year:** 1988

**Year Built:** 1988

**Country:** United States

## Dimensions

---

**LOA:** 40' 0" (12.19m)

**Beam:** 13' 7" (4.14m)

**Max Draft:** 4' 9" (1.45m)

---

## Speed, Capacities and Weight

---

**Displacement:** 38000 Pounds

**Water Capacity:** 110 Gallons

**Holding Tank:** 60 Gallons

**Fuel Capacity:** 359 Gallons

---

## Accommodations

---

**Total Cabins:** 2

**Total Berths:** 3

**Total Heads:** 2

---

## Hull and Deck Information

---

**Hull Material:** Fiberglass

---

## Engine Information

---

**Engines:** 2

**Manufacturer:** Caterpillar

**Model:** 3208TA

**Engine Type:** Inboard

**Fuel Type:** Diesel

---

## DETAILED INFORMATION

---

### Generator

---

- 8kW Onan 2100 Hrs

### Master Head

---

- Vanity With Molded Sink And Counter With Storage Above The Sink As Well As Below
- Fluorescent Lighting
- Blower
- Hot And Cold Water On Demand
- Vacuflush Head
- Shower Sump Pump And Switch
- Holding Tank Indicator Light

### Forward Stateroom

---

- V-Berth With Mattress
- Access To The Chain Locker And Rope Anchor Lockers
- Boat Is Setup For Twin Anchors
- Plow anchor With Chain To The Stbd Side Winch Position
- Rope Line To Port Side Anchor With Fortress Anchor Stored On The Deck
- Mounted Reading Lights
- Stereo Speakers On The Port/Stbd Side

### Galley

---

- Refrigerator/Freezer Heavily Insulated Top Opening Built In Chest Deep Freezer HD Twin Holding Plates For The Freezer Single Holding Plate For The Frig
- Requires 1 Hour Of Running Every 12 hours from The Generator Or Shore Power For Operation Of The Freezer And The Frig Heavy Duty Compressor And Controls
- 6 Piece China Dinner Service/Crystal Glassware
- Princess 3 burner electric stove
- 10 Gal electric water heater
- Large Four drawer storage unit
- Lighting Above The Sink And Galley Areas
- Exhaust Blower For The Stove Area
- Storage In The Steps Down To The Galley Area
- Microwave

---

## Fore/Aft Deck Areas

---

- Bimini Top With A Stainless Frame
- Wet Bar With Fresh Water Sink And Storage Below
- Marquipt Electric Crane Arm With Mounts On Deck To Mount The Dinghy And 15Hp Yamaha Motor
- 3 Large Custom Built Aluminum Storage Chest With Upholstered Fitted Seating, Chest Stocked With Dive Gear And Other Nautical Equipment
- Aft Deck Dining Set With 4 Chairs
- Freshwater Wash Down Hot And Cold
- Anchor Windlass
- Bow Pulpit With Anchor And Chain
- Stainless Safety Rails Around The Complete Boat
- Nav Lights Port/Stbd
- Aluminum Side Boarding Ladder
- Stainless Swim Ladder Mounted On Transom Swim Platform
- Aluminum Boarding Gangway For Marina Use
- Stern Light
- Hubbell 30/50 Amp Power Cord Connections

---

## Electrical

---

- 12 Volt DC electrical system
- 8 kW onan generator
- Automatic battery charger Dual Voltage 110/220 Input
- 110V & 12V outlets through out the boat
- 110V AC electrical system
- 2 Batteries W/parallel switch Heavy Duty New 2 YRS ago
- Dockside electrical cable
- Hubbell 30/50 Amp Power cord Connection Stored Under Forward Helm Seating

---

## ENGINE ROOM

---

- 2 Reverse Cycle Air Conditioning Systems 1 For The main salon and The Other For The Master Stateroom And The Forward Cabin Area
- Halon Manual Fire Control System
- 2 Spare props
- Fuel Shutoff Valves And Engine Fuel Control Valves
- Bennett Trim Tabs Pump
- Engine Synchronizers
- 2 Bilge Blowers
- 5 Separate Bilge Pumps

- Battery Charger
- Hydraulic Steering System
- Toilet Vacuum Vessel Pumps And Valves
- Freshwater Supply Pump
- Engine/Generator Oil Changing System

---

## Electronics

---

- Garmin 5212 Color Touch Screen With Chips For East/West Coast Of Florida and Bahamas 2016
- Simrad AP20 Autopilot
- I-Com Single Side Band Receiver And Transmitter
- North Star GPS Standby System
- Furuno Radar With Scanner Mounted Above The Height Of The Canopy
- Furuno Color Fish Finder/Depth Sounder
- New I-Com VHF 2016
- Battery Parallel Switch
- VDO Instruments For The Engines
- Morse Controls For Transmissions And Speed

---

## Master Stateroom

---

- Custom Made Interior Sprung Mattress Queen Size
- Walk Around Bed
- New Curtains And Matching Bed Head
- Hanging Closet
- Ample Storage lockers And Drawers

---

## Exclusions

---

Owner's personal belongings.

---

## Disclaimer

---

The Company offers the details of this vessel or yacht in good faith but cannot guarantee or warrant the accuracy of this information nor warrant the condition of the vessel. A buyer should instruct his representatives, agents, or his surveyors, to investigate such details as the buyer desires validated. This vessel or yacht is offered subject to prior sale, price change, or withdrawal without notice.

# PHOTOS



















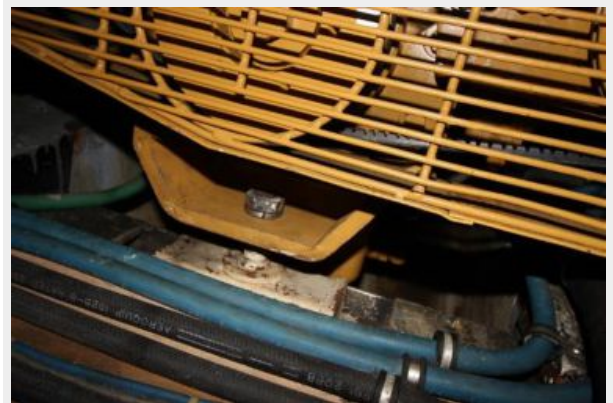
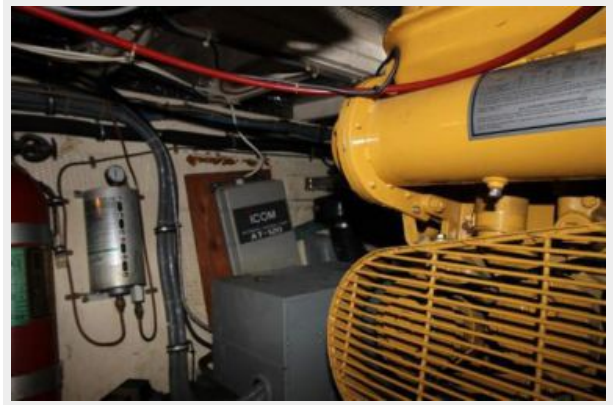


















# CONTACTS

---

Andrey Shestakov, leading yacht broker of the sales department of Shestakov Yacht Sales Inc. Shestakov Yacht Sales Inc., the official representative of the Miami/Fort Lauderdale FL headquarters.

## Contact details

---

Email: [andrey@shestakovyachtsales.com](mailto:andrey@shestakovyachtsales.com)

Web: [shestakovyachtsales.com/en/](http://shestakovyachtsales.com/en/)

## Telephones

---

USA: +1(954)274-4435

## Office hours

---

Monday – Saturday: **9:00 - 21:00** EDT

Sunday: **closed**

## Address

---



Harbour Towne Marina, 850 NE 3rd St,  
STE 213, Dania, FL 33004