

OUR TRADE — CRUISERS YACHTS



Builder: [Cruisers Yachts](#)

Year Built: 2010

Model: Cruiser

Price: PRICE ON APPLICATION

Location: Canada

LOA: 52' 3" (15.93m)

Beam: 15' 6" (4.72m)

Min Draft: 3' 8" (1.12m)

Our experienced yacht broker, Andrey Shestakov, will help you choose and buy a yacht that best suits your needs **Our Trade — Cruisers Yachts** from our catalogue. Presently, at Shestakov Yacht Sales Inc., we have a wide variety of yachts available on our sale's list. We also work in close contact with all the big yacht manufacturers from all over the world.

If you would like to buy a yacht **Our Trade — Cruisers Yachts** or would like help answering any questions concerning purchasing, selling or chartering a yacht, please call **+1(954)274-4435**

TABLE OF CONTENTS

TABLE OF CONTENTS	2
SPECIFICATIONS	3
Overview	3
Basic Information	5
Dimensions	5
Speed, Capacities and Weight	6
Accommodations	6
Hull and Deck Information	6
Engine Information	6
PHOTOS	7
CONTACTS	17
Contact details	17
Telephones	17
Office hours	17
Address	17

SPECIFICATIONS

Overview

With triple Volvo model 600 diesels and pod drives this is the one to have.

You can stop searching now, you've found the boat you've been looking for. This Cruisers 520 Sport Coupe is in absolutely mint condition. The boat is outstanding in every respect from the beautifully appointed master state room to the spotless engine room, she just sparkles. Fresh water since new and one owner. Don't hesitate. Call today.

US Buyers; remember buying in Canada is the same as buying in the US. There is NO DUTY and NO CANADIAN TAXES. Make your best deal and take the boat home to your state. We can transport anywhere. Call today!

Additional Specs, Equipment and Information: **Specs** Hull Shape: Semi-Displacement
Dimensions LOA: 52 ft 3 in Beam: 15 ft 6 in Bridge Clearance: 13 ft 1 in Headroom: 6 ft 6 in Dry Weight: 42000 lbs **Engines** Total Power: 1305 HP Engine 1: Engine Brand: Volvo Year Built: 2010 Engine Model: 600 Engine Type: Inboard Engine/Fuel Type: Diesel Location: Port Engine Hours: 675 Drive Type: Pod Drive Engine Power: 435 HP Engine 2: Engine Brand: Volvo Year Built: 2010 Engine Model: 600 Engine Type: Inboard Engine/Fuel Type: Diesel Engine Hours: 675 Drive Type: Pod Drive Engine Power: 435 HP Engine 3: Engine Brand: Volvo Year Built: 2010 Engine Model: 600 Engine Type: Inboard Engine/Fuel Type: Diesel Location: Starboard Engine Hours: 675 Drive Type: Pod Drive Engine Power: 435 HP **Tanks** Fresh Water Tanks: (150 Gallons) Fuel Tanks: (500 Gallons) Holding Tanks: (75 Gallons) **Electronics** VHF Plotter Compass Autopilot Radar TV set - x4 GPS Cockpit speakers Radio DVD player Depthsounder **Inside Equipment** Microwave oven Electric head Air conditioning Washing machine Hot water Oven Electric bilge pump Heating Refrigerator Dishwasher Battery charger **Electrical Equipment** Shore power inlet Generator **Outside Equipment/Extras** Cockpit shower Swimming ladder Tender Cockpit table Cockpit cushions

Accommodations

The Cruisers Yachts 520 Sport Coupe offers accommodation that can only be described as sumptuous. The forward guest cabin is very roomy and features a floating queen bed. There are two large hanging lockers and a separate entrance to the forward head with shower. The cabin features a flat screen TV, indirect lighting and a full door for privacy.

The owners suite is huge and luxuriously appointed. There is ample storage in hanging lockers and bureaus, a flat screen TV, indirect lighting and a large head with shower. There is a washer/dryer situated in the suite and conveniently tucked away in a cabinet.

The salon is gorgeous and appointed in rich and luxurious woods and stainless steel. The floor is covered in beautiful solid wood flooring that compliments the interior furnishings. The settee is finished in soft and supple ultra leather and the stools are finished in faux ostrich. The

companionway to the helm is wide and is also finished in beautiful dark wood tones.

Everywhere you turn inside this yacht you are constantly amazed by the quality finishes and the attention to detail. Cruisers has always built quality yachts but this model is a testament to their dedication to produce a superlative yacht.

Engines

Triple Volvo model 600 diesels provide 435 horse power each for a total of 1305 horse power. Coupled with IPS drives this package makes maneuvering the boat a breeze. These are powerful yet economical engines that have recorded just 675 hours of use. The engines and the engine compartment are spotless.

Manufacturer Provided Description When designing the 520 Sports Coupe, our engineers had a problem. The left side of their brains wanted convenient features like an enclosed cockpit, walk-thru windshield and power sunroof. But the right side of their brains wanted luxurious touches like additional portholes below deck, a finely appointed galley and rich cherry wood interior. In the end, they came together and created a singular yacht intended to please the mind, body and soul.

Exterior

The boat is finished in white topsides with black hull. The finish shines like that of a new boat. The aft cockpit seat converts to a sun lounge with table. The aft seating is fitted to a track and slides to the port side making a curved seating arrangement that surrounds the ample high gloss wood table. The table folds up for convenience or extends to capably serve a party of 8. The cockpit features a thick modern carpet that compliments the solid surface counter tops and the cockpit upholstery. There is a hydraulic swim platform finished in new teak flooring. The dingy, a center console rib features a 40 HP outboard and the dingy and motor are covered with custom sunbrella fitted covers.

There is a glendinning cablemaster auto cord feed/recoil system which makes utilizing the 50 amp power cord easy. There is a hot/cold transom shower as well as an electric BBQ. The hard top features a privacy shade and a full sunroof that opens electrically to let the sun in. The captains seat is spacious with a fold up bolster.

The bar features a refrigerator and ice maker as well as a sink with fresh water supply. The TV is hidden within the bar and is raised and lowered electrically. There is a large lounge to port and lots of windows with custom blinds.

The deck features a large stainless steel claw anchor with lots of chain and rode. There is a windlass that can be operated from the bow or from the helm.

Engine Notes

The boat features triple Volvo model 600 435 HP diesels with IPS drives. The engine throttles are "fly by wire" providing effortless gearshift/throttle movement.

Electrical

The boat features central air/heat. Four systems allow the owner to individually customize the heating/cooling of every cabin in the boat as well as on deck. The air is ice cold. There is an additional electrical isolator that allows the boat to properly operate on two 30 amp 110 volt power supplies. This is a great system that allows all systems in the boat to be operated when 240 volt power is not available. There is a 14 KW diesel generator with just over 550 hours.

Helm

The helm is a Captain's dream, featuring open array digital HD radar, Raymarine GPS with chartplotter, auto pilot, Raymarine VHF and the Volvo engine management screen which affords the captain a full inventory of engine information. It doesn't get any nicer than this.

Dimensions

520 Sports Coupe Specifications L.O.A. with Integrated Standard Swim Platform 52'3" / 15.9 m
 Beam 15'6" / 4.72 m Bridge Clearance with Hardtop 13'1" / 4.0 m Cabin Headroom 6'6"
 / 2.0 m Draft 44" / 112 cm Height from Keel to Top of Hardtop 16'5" / 5.0 m Fuel
 Capacity 500 gal. / 1,893 L Waste Holding Capacity 75 gal. / 284 L Water System
 Capacity 150 gal. / 568 L Approx. Weight, Diesel Engines 42,000 lb / 19,051 kg

Basic Information

Category: Cruiser

Model Year: 2010

Year Built: 2010

Country: Canada

Vessel Top: Hardtop

Dimensions

LOA: 52' 3" (15.93m)

Beam: 15' 6" (4.72m)

Min Draft: 3' 8" (1.12m)

Clearance: 13' 1" (3.99m)

Speed, Capacities and Weight

Displacement: 42000 Pounds

Water Capacity: 150 Gallons

Holding Tank: 75 Gallons

Fuel Capacity: 500 Gallons

Accommodations

Total Cabins: 3

Total Berths: 6

Sleeps: 6

Total Heads: 2

Hull and Deck Information

Hull Material: Composite Fiberglass

Hull Color: Black

Engine Information

Engines: 3

Manufacturer: Volvo Penta

Model: 600

Engine Type: Inboard

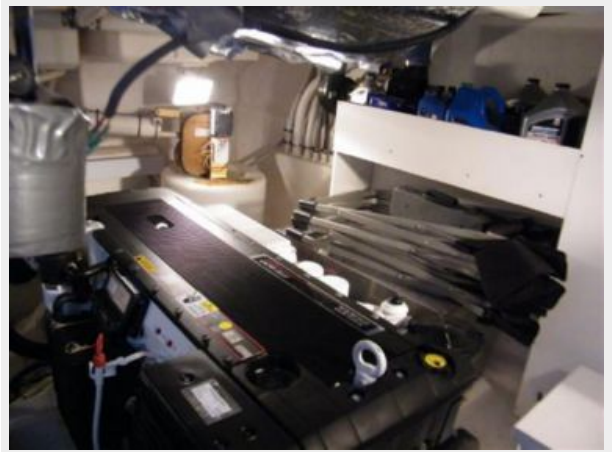
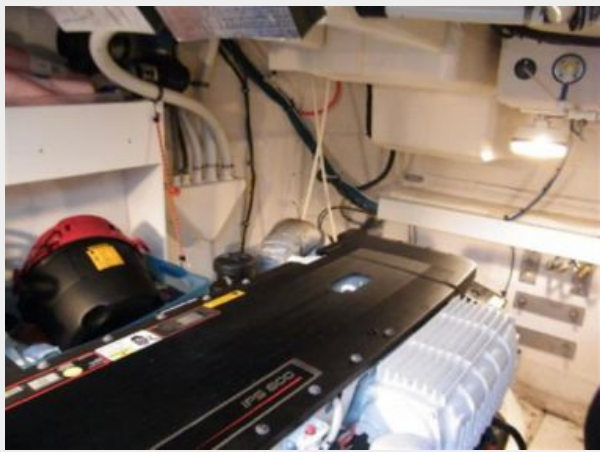
Fuel Type: Diesel

PHOTOS



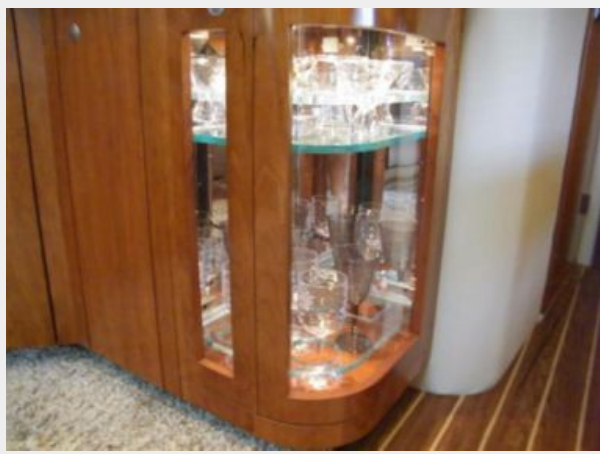


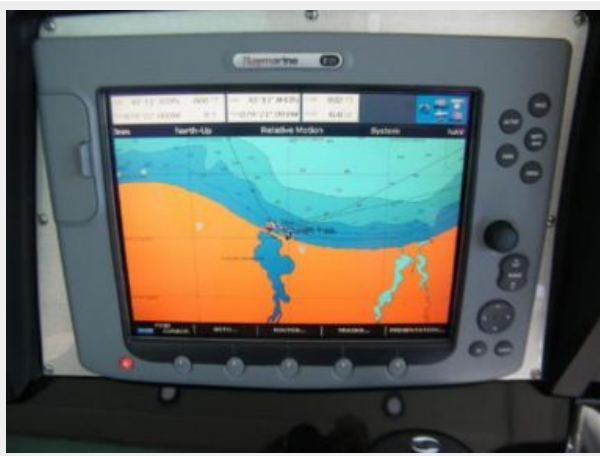
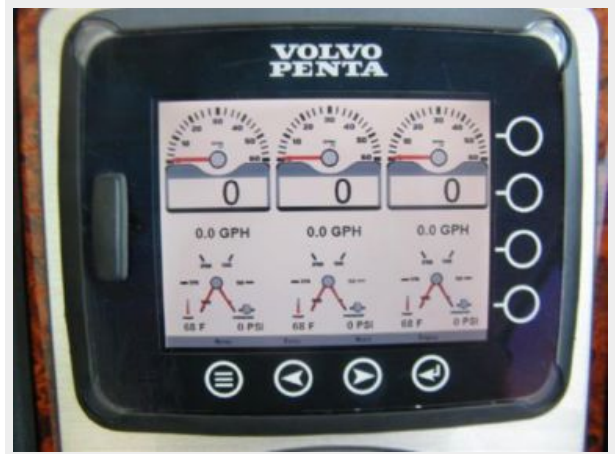


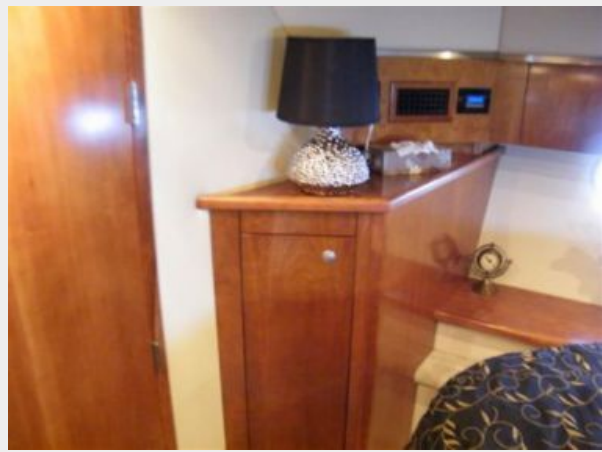


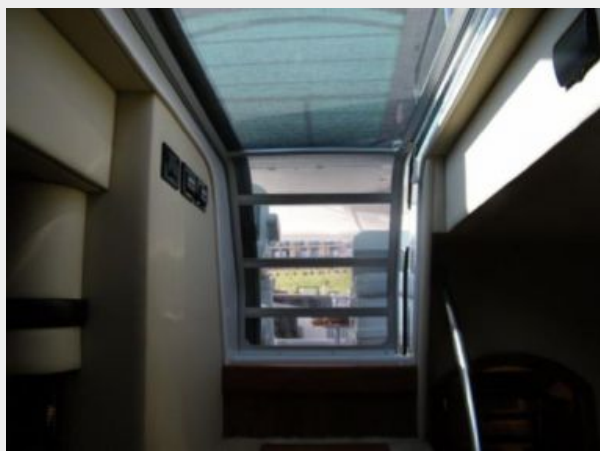












CONTACTS

Andrey Shestakov, leading yacht broker of the sales department of Shestakov Yacht Sales Inc. Shestakov Yacht Sales Inc., the official representative of the Miami/Fort Lauderdale FL headquarters.

Contact details

Email: andrey@shestakovyachtsales.com

Web: shestakovyachtsales.com/en/

Telephones

USA: +1(954)274-4435

Office hours

Monday – Saturday: **9:00 - 21:00** EDT

Sunday: **closed**

Address



Harbour Towne Marina, 850 NE 3rd St,
STE 213, Dania, FL 33004