

STELL — OY NAUTOR AB



Судостроитель: OY NAUTOR AB

Год постройки: 2004

Модель: Cruising/Racing Sailboat

Цена: **ЦЕНА ЯХТЫ ПО ЗАПРОСУ**

Местонахождение: Sweden

Длина общая: 45' 5" (13.83m)

Ширина: 12' 11" (3.92m)

Мин. осадка: 7' 10" (2.37m)

Купить **Stell — OY NAUTOR AB** а также выбрать подходящую вам яхту из нашего каталога яхт вам поможет опытный яхтенный брокер Андрей Шестаков. На сегодняшний день компания **Shestakov Yacht Sales Inc.** имеет большое количество яхт в собственном списке продаж, а также тесно сотрудничает со всеми крупными яхтенными производителями по всему миру.

Для того чтобы купить яхту **Stell — OY NAUTOR AB** а также проконсультироваться по любому вопросу связанному с покупкой, продажей, чартером яхт позвоните по телефону **+7(918)465-66-44**.

ОГЛАВЛЕНИЕ

ОГЛАВЛЕНИЕ	2
ХАРАКТЕРИСТИКИ	3
Обзор	3
Основная информация	3
Размеры	3
Скорость, вместимость и масса	4
Размещение	4
Корпус и палуба	4
Информация о двигателе	4
ПОДРОБНОЕ ОПИСАНИЕ	5
Detailed Information	5
Исключения	15
Отказ от ответственности	15
ФОТОГРАФИИ	16
КОНТАКТЫ	19
Контактная информация	19
Телефоны	19
Время работы	19
Адрес	19

ХАРАКТЕРИСТИКИ

Обзор

Nautor's Swan 45 – 037 STELL is an excellent example of this hugely successful One Design fleet. This Swan was purchased in year 2014 from the second owner that purchased the boat year 2005 after one year in the Swan 45 one design class racing. Since 2005 until 2014 the second owner used here for local regattas in Italy and her interior is in immaculate condition.

The current owner did a major upgrade at Yxbila boat yard in Finland 2015 and has since 2015 been cruising in the baltic and stored off shore during winter in-house. In the summer 2016 the boat (STELL sailing team) participated in ORCi Wolds with a third position as result. Except for this the boat has been raced in three local club regattas, all with first position as result.

Swan 45 STELL is in excellent condition, probably the best Swan 45 in the market today and the current owner did the upgrade it in cooperation with Sixten Sandström and Lars Ström, former Swan employee and Yxbila boat yard Nautor's Swan Authorised Service Center to ensure all upgrades have similar requirements as Nautor Swan has. The aim has been to get a boat that is very comfortable for family cruising and very successful for handicap racing as ORCi, SRS or similar.

New features as B&G electronics, heater, new batteries, new electric winch, new painting flagblue of boat, new painting of mast and boom, complete new sails from NS, new keel 2,37 m and many other upgrades.

Основная информация

Тип судна: Cruising/Racing Sailboat

Модельный год: 2004

Год постройки: 2004

Год обновления: 2017

Страна: Sweden

Размеры

Длина общая: 45' 5" (13.83m)

Длина по ватерлинии: 39' 8" (12.07m)

Ширина: 12' 11" (3.92m)

Мин. осадка: 7' 10" (2.37m)

Скорость, вместимость и масса

Водоизмещение: 23721.7393912 Pounds **Вместимость воды:** 84.53505664 Gallons

Объем топливного бака: 55.47613092
Gallons

Размещение

Всего кают: 2

Всего ком. состава: 2

Корпус и палуба

Материал корпуса: GRP

Цвет корпуса: Blue (new 2015)

Дизайнер корпуса: Germán Frers

Информация о двигателе

Двигатели: 1

Производитель: Volvo Penta

Модель: D2-55

ПОДРОБНОЕ ОПИСАНИЕ

Detailed Information

Nautor's Swan 45 – 037 STELL is an excellent example of this hugely successful One Design fleet. This Swan was purchased in year 2014 from the second owner that purchased the boat year 2005 after one year in the Swan 45 one design class racing. Since 2005 until 2014 the second owner used here for local regattas in Italy and her interior is in immaculate condition.

The current owner did a major upgrade at Yxbila boat yard in Finland 2015 and has since 2015 been cruising in the Baltic and stored off shore during winter in-house. In the summer 2016 the boat (STELL sailing team) participated in ORCi Worlds with a third position as result. Except for this the boat has been raced in three local club regattas, all with first position as result.

Swan 45 STELL is in excellent condition, probably the best Swan 45 in the market today and the current owner did the upgrade it in cooperation with Sixten Sandström and Lars Ström, former Swan employee and Yxbila boat yard Nautor's Swan Authorised Service Center to ensure all upgrades have similar requirements as Nautor Swan has. The aim has been to get a boat that is very comfortable for family cruising and very successful for handicap racing as ORCi, SRS or similar.

New features as B&G electronics, heater, new batteries, new electric winch, new painting flagblue of boat, new painting of mast and boom, complete new sails from NS, new keel 2,37 m and many other upgrades.

RECENT UPGRADES

Upgrades Yxbila boat yard Nautor's Swan Authorised Service Center, Finland 2015:

B&G 20/20HV Display pack for H5000 or Triton systems x 3

RC42N, Rate compass with 5 m (16ft) cable and Micro-C connector.

The ZG100 Antenna

H5000 Base Pack HERCULES

H5000, Pilot Controller and computer

ZEUS²12 Multi-function Display, World Base Map.

Broadband 4G Radar bundle for B&G Zeus series

H50 VHF Wireless Handset. Wireless handset for the V50 VHF Radio x 2

V90 Black Box VHF AIS RX SYSTEM

GOFREE WIFI1 WIRELESS MODULE

Remote control B&G

New painting AwlGrip FlagBlue

New painting mast, boom spinnakerboom AwlGrip white

Aitronic D5 heater

New pushpit pulpit

New navigation lighth LED

Hull stripped and 6x coats of epoxy primer added, VC 17

SailDrive, service new bearing

Radarpole Seaview Self Levelling with lift

Installation additional compressor refrigerator

Additional one septitank

Bowthruster Sidepower vertical retractable

Replacement of all running rigging

New Standing rigging Rod Hall Spares

Replacement of Steering cables

Mastervolt inverter

Service batteries ReoJN r 105 6v-225 Ah x 4

Engine start battery Optima 12-55Ah x 1

Bowthruster battery Optima 12-55Ah x 1

Fusion Stereo with Bluetooth.

Race covers forecabin and saloon

Upgrades 2016:

Upgrades of running rigging

Upgrades 2017:

Reckmann furling system. Reckmann MF-2 manuell furler Reckmann S2.5 carbonfiber – trum can be deomounted for clubregattas (used this once in local regatta 2018)

CROMOX Anchorchain Duplex, CXA-8, Grade 60 PLUS, 1.4462 - AISI 318LN, electropolished, 8mm, 50 m – total 90 m with rope

Ultra Ankars 21 kg

New anchor windlass electric

HULL & APPENDAGES

Glass / vinylester laminate with carbon reinforcements

Sandwich topsides and single skin bottom

Topsides and deck finished in blue and white gel coat

Fiber reinforcements are multiaxial or unidirectional.

Structural bulkheads are of veneered sandwich construction or marine grade waterproof plywood.

Bottom stiffeners reinforced with unidirectional carbon and multiaxial grassfire in selected areas.

GRP engine beds.

Composite mast step with movable shoe.

Stainless chainplate deck fittings

Keel

Antimony alloyed lead bulb and fin with upper flange recessed into hull.

Fin bolted to hull with high tensile steel bolts.

Keel is faired to Zero Tolerance with template control

Rudder & Steering System

Foam filled rudder with carbon/epoxy stock.

Aluminium quadrant. Vectran cable steering with roller bearing sheaves.

Composite pedestal integrated with cockpit sole.

Carbon Fiber 1600mm recessed steering wheel 0.9 turns H.O. to H.O.

Alloy emergency tiller

DECK

Advanced laminate sandwich deck with unidirectional skins and low density closed cell foam core.

Teak laid side decks, cockpit seats and floor glued and vacuum bagged

Gas bottles in port side locker

Deck Equipment

Stainless steel pushpit, pulpit and stanchions

600 mm high life lines

30 mm high teak toe rails forward of mast.

Composite mast collar.

Headstay attachment on stemhead.

Folding eyes for harness attachment in cockpit

Aluminium bar in forepeak locker for storing ropes

Hatches & Ports

Main companionway sliding hatch garage flush with coachroof.

Cockpit hatch for steering system access.

1 Saloon overhead hatch Lewmar size 60

1 Foredeck hatch Lewmar size 60

1 Ventilation hatch in fwd head Lewmar size 03

4 Fixed coaming windows

4 openable coaming portlights - in aft cabin, aft head, galley and navigation area

1 portlight from aft cabin to cockpit

1 hatch for gas bottle locker

Anchor stowage hatch

Tinted acrylic main companionway sliding hatch with custom drop down washboard

Winches by Lewmar

Primary – 2x 55 STOR three speed

Mainsail – 2x 50 STOR two speed

Halyards - 48 STOR two speed with speed ring base

1 x Electric winch

Anchor windlass Ocean 1 Gypsy only, 12 V

Sailing Hardware

Harken aluminium jib sheet tracks

Harken aluminium main sheet track Harken halyard lead blocks

Harken foot blocks for genoa

Spinlock clutches

INTERIOR

General

Floorboards of sandwich construction with laid teak surfaces

Lightweight overhead paneling

Varnished bulkheads and topsides in forward and aft cabins

Teak bulkheads and topsides in main cabin

Lee cloths for berths in cabins and main cabin

Interior upholstery in Annala Calico crew white with dark blue piping

Slip covers for mattresses and settees in dark blue canvas

Foward Cabin

Double berth

Hanging locker

Foam mattresses over Scandi-Flex berth bottoms

Reading lights for each berth

Forward Head

GRP moulding to half height

Water tap, shower, mirror and waste bin

Seawater flushing WC

Integrated shower

Aft Cabins port side aft

Double lower berth

Lower berth supported by scandi-flex battens

Lockers under lower berth

Reading lights for each berth

Aft Head Starboard side

GRP moulding to half height

Water tap, shower, mirror and waste bin

Seawater flushing WC

Integrated shower

Galley

Gimbaled two burner stove with oven and stainless steel protection bar

Two stainless steel sinks with Oras mixer tap

Corian Cameo White counter tops and sink covers

Drawers and lockers

Front loading 70 litre refrigerator

Top loading 60-litre freezer/refrigerator

Garbage bin

Saloon

Teak folding leaf table with fiddles

Lockers outboard both sides

Settee backs lift to form pilot berths both sides

Nav Station

Forward facing chart table with seat

Chart stowage under table top

Drawers under table

Oilskin locker

ENGINE & SYSTEMS

Volvo Penta Marine diesel D2-55, 39 kW, 53 HP at 3.000 RPM,

Saildrive and 3 blad Maxiprop

Aluminium 150 ltr fuel tank plus additional 60litre fuel tank, total capacity 210L

Engine box removable for access

Engine remote start in cockpit

Plumbing & Ventilation Systems

Composite Flowtech sea cocks for all through hull fittings below waterline

Water and fuel tank level indicators Aluminium 320 ltr water tank in three interconnected compartments Drinking water purifier

Hot and cold pressurized water with backup foot pump Level indicator for holding tank

Deck air inlet for engine area. Exhaust outlet through transom with extractor

Drainage System

2 manual bilge pumps and 1 electric bilge pump

Whale gulper pumps for sump tanks in each head

60 ltr holding tank for forward WC's. 60 lth holding tank aft WC's.

"Y" valve in forward head

ELECTRICAL SYSTEM

12 V DC electrical system with insulated return

Gelcell, 12 V 290 Ah battery bank for general service in vented box under saloon table

12 V 46 Ah engine starter batteries in service battery box

Mast foot, shrouds and stays grounded on the keel

12 V DC refrigeration

DC System

12 V DC Main electric control panel at chart table

12 V outlet at navigation and in cockpit

One reading light above each berth

Recessed halogen dome lights overhead

Flexible chart light and red night light a navigation station

Separate main entrance light

Switches for headlights and masthead light in cockpit

Navigation Lights

AC System

Shore power supply 230 V, 50 A with 15m cable and deck connection

SAILS

Sail	Year	Sailmaker	Material/Notes
------	------	-----------	----------------

MAINSAILS

Racing main	2016	North sails	I regatta 3Di 780m RAW carbon
-------------	------	-------------	-------------------------------

Cruising/racing	2015	North sails	3di 760m kevlar
-----------------	------	-------------	-----------------

Old Racing main	2004	North sails	3DL Carbon Kevlar
-----------------	------	-------------	-------------------

UPWIND

Racing Jib Light	2016	North sails	3Di 780m Raw
------------------	------	-------------	--------------

Racing Jib Medium 2015 North sails 3Di 780

Racing Jib Heavy 2004 North sails 3DL – carbon/kevlar

Racing No. 4 Jib 2004 North sails 3DL – carbon/kevlar

Racing Storm jib 2004 North sails Dacron

DOWNWIND

S1 Superlite 50 2016 North sail Nylon

S2 Superkote 75 2016 North sail Nylon

Spinnaker H 2004 North sails Nylon

A3 spinnaker 2004 North sails Nylon

Spinnaker Staysail 2016 North sails NorLam Sport Poly TF1 1.0 NL

Price may be changed without notice

Boat is offered subject to still being available

The particulars are believed to be correct but not guaranteed

Исключения

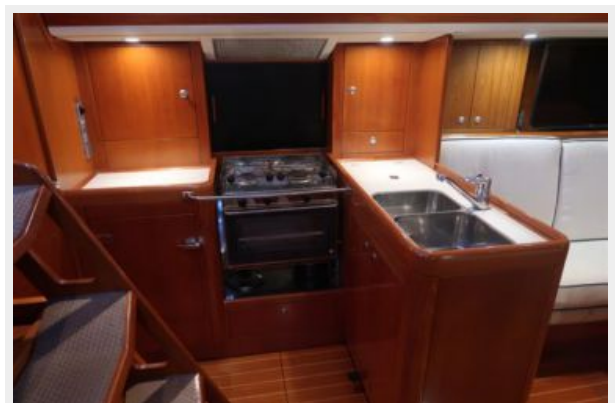
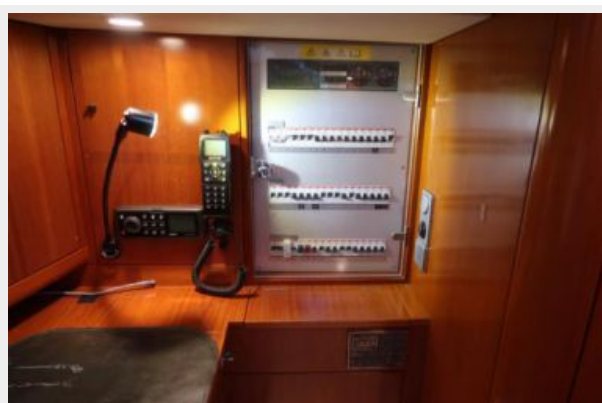
При продаже яхты исключаются личные вещи владельца.

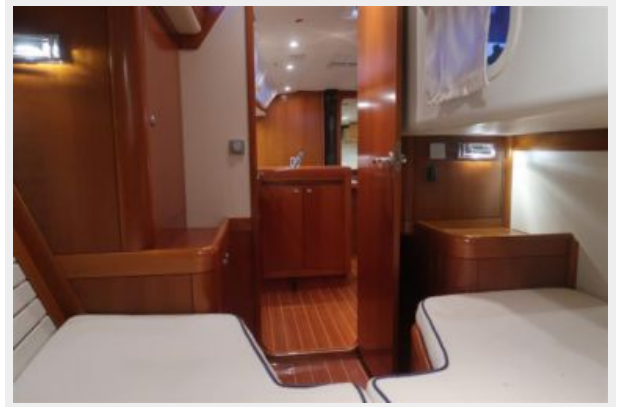
Отказ от ответственности

Компания предоставляет описание судна или яхты добросовестно, но не может гарантировать точность этой информации, а также не ручается за техническое состояние. Покупатель должен проинструктировать своих агентов или оценщиков исследовать представленную информацию более подробно, по собственному желанию. Продажа судна или яхты, изменение цены или снятие с продажи будет происходить без предварительного уведомления.

ФОТОГРАФИИ







КОНТАКТЫ

Андрей Шестаков (Andrey Shestakov) – ведущий яхтенный брокер отдела продаж яхт и судов компании Shestakov Yacht Sales Inc. Официальный представитель Shestakov Yacht Sales Inc. для русскоговорящих клиентов в центральном офисе компании в Майами/Форт Лодердейл/Флорида/США.

Контактная информация

Email: andrey@shestakovyachtsales.com

Web: shestakovyachtsales.com

Телефоны

Краснодарский край: **+7(918)465-66-44**

США, Майами, Флорида: **+1(954)274-4435**

Время работы

Понедельник – Суббота: **9:00 - 21:00**
EDT

Воскресенье: **Закрито**

Адрес



Harbour Towne Marina, 850 NE 3rd St,
STE 213, Dania, FL 33004