

OCEAN KING 88 — OCEAN KING



Builder: [OCEAN KING](#)

Year Built: 2023

Model: Motor Yacht

Price: PRICE ON APPLICATION

Location: Italy

LOA: 88' 6" (26.97m)

Beam: 26.16

Min Draft: 7' 6" (2.29m)

Max Draft: 8' 2" (2.49m)

Cruise Speed: 10 Knots Kts. (12 MPH)

Max Speed: 12 Knots Kts. (14 MPH)

Our experienced yacht broker, Andrey Shestakov, will help you choose and buy a yacht that best suits your needs **OCEAN KING 88 — OCEAN KING** from our catalogue. Presently, at Shestakov Yacht Sales Inc., we have a wide variety of yachts available on our sale's list. We also work in close contact with all the big yacht manufacturers from all over the world.

If you would like to buy a yacht **OCEAN KING 88 — OCEAN KING** or would like help answering any questions concerning purchasing, selling or chartering a yacht, please call **+1(954)274-4435**

TABLE OF CONTENTS

TABLE OF CONTENTS	2
SPECIFICATIONS	3
Overview	3
Basic Information	3
Dimensions	3
Speed, Capacities and Weight	3
Accommodations	4
Hull and Deck Information	4
PHOTOS	5
Salon (Sistership)	5
(Sistership)	5
Master Stateroom (Sistership)	5
Galley (Sistership)	5
Sundeck (Sistership)	5
Side Deck (Sistership)	5
Jacuzzi (Sistership)	5
Stern (Sistership)	5
General Arrangement	6
CONTACTS	7
Contact details	7
Telephones	7
Office hours	7
Address	7

SPECIFICATIONS

Overview

The Ocean King 88 is built on the base frame of a true ocean going tug. It has the same hull structure and base systems found in the tugs with changes to make her better suited to yacht use than you can find in a converted tug. She has 2475 sq ft of interior living space making her a true home on the water. The exterior space is 2690 sq ft, combined it is 5165 sq ft, which is much larger than her closest competitors.

Basic Information

Category: Motor Yacht

Model Year: 2023

Year Built: 2023

Country: Italy

Dimensions

LOA: 88' 6" (26.97mm)

LWL: 72' 7" (22.12mm)

LOD: 78' 11" (24.05mm)

Beam: 26.16

Min Draft: 7' 6" (2.29mm)

Max Draft: 8' 2" (2.49mm)

Speed, Capacities and Weight

Cruise Speed: 10 Knots Kts. (12 MPH)

Cruise Speed Range: 5000

Max Speed: 12 Knots Kts. (14 MPH)

Gross Tonnage: 238 Pounds

Water Capacity: 2110 Gallons

Holding Tank: 400 Gal Gallons

Fuel Capacity: 10166 Gal Gallons

Fuel Consumption: 24 Gal Gallons

Accommodations

Total Cabins: 5

Total Berths: 7

Sleeps: 10

Total Heads: 5

Crew Cabin: 4

Crew Berths: 4

Crew Heads: 2

Hull and Deck Information

Hull Material: Steel

Deck Material: Teak

Hull Configuration: Full Displacement

Exterior Designer: Innave Yacht Design

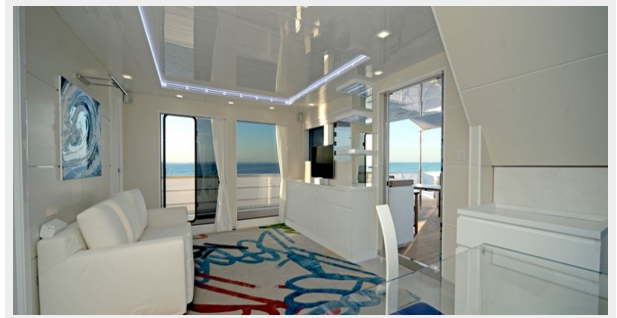
Interior Designer: Innave Yacht Design

PHOTOS

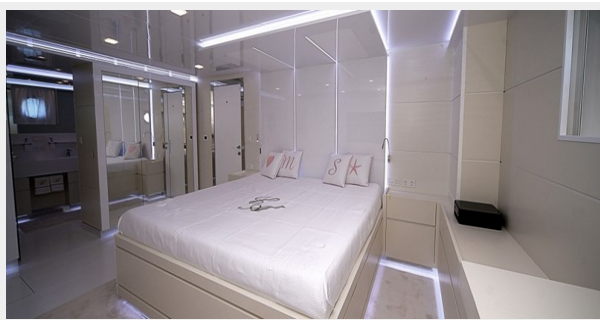
Salon (Sistership)



(Sistership)



Master Stateroom (Sistership)



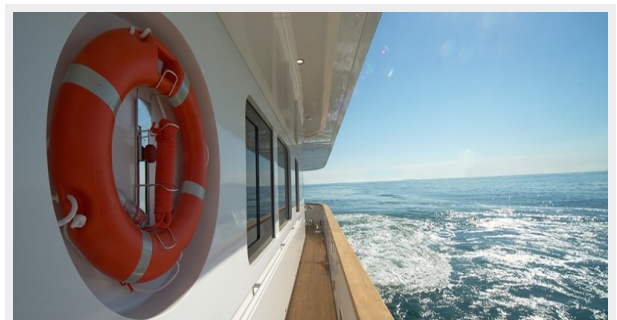
Galley (Sistership)



Sundeck (Sistership)



Side Deck (Sistership)



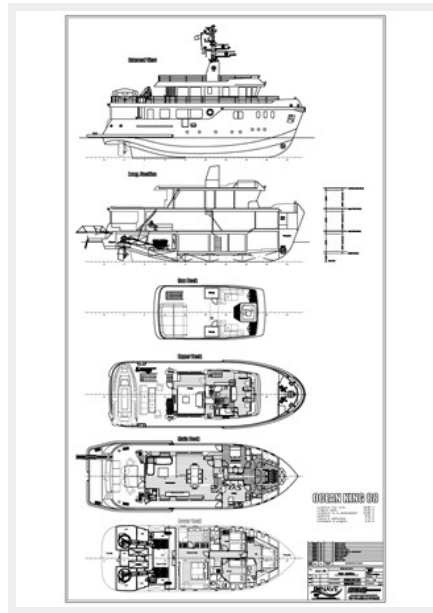
Jacuzzi (Sistership)



Stern (Sistership)



General Arrangement



CONTACTS

Andrey Shestakov, leading yacht broker of the sales department of Shestakov Yacht Sales Inc. Shestakov Yacht Sales Inc., the official representative of the Miami/Fort Lauderdale FL headquarters.

Contact details

Email: andrey@shestakovyachtsales.com

Web: shestakovyachtsales.com/en/

Telephones

USA: +1(954)274-4435

Office hours

Monday – Saturday: **9:00 - 21:00** EDT

Sunday: **closed**

Address



Harbour Towne Marina, 850 NE 3rd St,
STE 213, Dania, FL 33004