

62FT 2014 LAGOON 620 — LAGOON



Судостроитель: LAGOON

Год постройки: 2014

Модель: Катамаран

Цена: ЦЕНА ЯХТЫ ПО ЗАПРОСУ

Местонахождение: Grenada

Длина общая: 62' 0" (18.90m)

Ширина: 32' 10" (10.01m)

Макс. осадка: 5' 1" (1.55m)

Купить 62ft 2014 Lagoon 620 — LAGOON а также выбрать подходящую вам яхту из нашего каталога яхт вам поможет опытный яхтенный брокер Андрей Шестаков. На сегодняшний день компания Shestakov Yacht Sales Inc. имеет большое количество яхт в собственном списке продаж, а также тесно сотрудничает со всеми крупными яхтенными производителями по всему миру.

Для того чтобы купить яхту 62ft 2014 Lagoon 620 — LAGOON а также проконсультироваться по любому вопросу связанному с покупкой, продажей, чартером яхт позвоните по телефону **+7(918)465-66-44**.

ОГЛАВЛЕНИЕ

ОГЛАВЛЕНИЕ	2
ХАРАКТЕРИСТИКИ	4
Обзор	4
Основная информация	4
Размеры	4
Скорость, вместимость и масса	4
Корпус и палуба	4
Информация о двигателе	5
ПОДРОБНОЕ ОПИСАНИЕ	6
General Overview of Lagoon 620	6
Factory Installed Options	6
Construction	7
Deck Equipment	7
Cockpit	7
Accommodations	8
Galley	9
Engine	10
Electrical	10
FLYBRIDGE	11
Sails and Rigging	11
Mast/Rigging	12
Исключения	12
Отказ от ответственности	12
ФОТОГРАФИИ	13
КОНТАКТЫ	18
Контактная информация	18
Телефоны	18
Время работы	18

Адрес

18

ХАРАКТЕРИСТИКИ

Обзор

Split Second is one of the most well maintained and optioned Lagoon 620's currently on the market. In late 2017 she went through an extensive yard period where all of her exterior softgoods were replaced, all mechanical equipment serviced, hauled, and painted.

She has a very successful charter history, and has over \$300K in charter revenue on the books for the 2017-2018 season.

The seller has placed her on the market to make room for his new catamaran.

Основная информация

Тип судна: Катамаран

Модельный год: 2014

Год постройки: 2014

Страна: Grenada

Размеры

Длина общая: 62' 0" (18.90m)

Ширина: 32' 10" (10.01m)

Макс. осадка: 5' 1" (1.55m)

Трапы: 101' 9" (31.01m)

Скорость, вместимость и масса

Водоизмещение: 71089 Pounds

Вместимость воды: 63 Gallons

Объем топливного бака: 172 Gallons

Корпус и палуба

Материал корпуса: Fiberglass

Комплектация корпуса: Катамаран

Информация о двигателе

Двигатели: 2

Производитель: Volvo

Модель: D3

Тип двигателя: Inboard

Тип топлива: Diesel

ПОДРОБНОЕ ОПИСАНИЕ

General Overview of Lagoon 620

Designed by the architects Van Peteghem and Lauriot Prévost (VPLP) in association with the Lagoon R&D department, the Lagoon 620 is an innovative solution to the needs of today's cruising yachtsman.

In the dining room, the settees have been entirely redesigned, as well as the ceiling, enabling more effective indirect lighting, and it now includes the option of installing adjustable blinds on all the wide vertical windows.

On the starboard side, the master suite has also been substantially modified, with a washroom now placed aft on either side of the cockpit access stairs, making room for a large cupboard space in the bedroom.

The forward starboard cabin, now a real V.I.P. suite, also benefits from this change due to the volume freed up by the repositioning of the master washroom.

Factory Installed Options

Split Second is a highly spec'd Lagoon 620. Her experienced owner ordered her the most desirable factory options. Some of the key factory upgrades/options include are listed below. Full build sheet is available upon request

- Ambiance Alpi Oak by Nauta Design
- Pleated blinds
- Upgraded leather upholstery for interior
- Carbonfiber "boulevard" boom
- Hydranet Square Top Mainsail
- All electric winches
- Electric furler for both Genoa and Jib
- Bowsprit w/ code zero on roller furler
- Upgraded underwater lights
- All new exterior soft goods late 2017
- Full cockpit enclosure
- Upgraded Bimini top with enclosure
- Folding carbonfiber boarding passarel
- Cockpit icemaker
- Hydraulic dinghy davits with remote control
- Bowthruster
- Upgraded Volvo D3-150's with Gori folding props
- Engine controls and throttles at both helms

- Upgraded AGM battery bank
- Onan 17.5KW genset
- Northern Lights 14kw new in 2017
- Watermaker (75GPH)
- Miele Appliances for galley
- Upgraded Tropical Air Conditioning
- Upgraded Raymarine electronics package

Construction

- Infused FRP + balsa core with polyester and high quality anti-osmotic resins.
- Hull bottom and keels in solid infused laminate
- Infused balsa core structural bulkheads
- Grey paint coat in bilges
- White gel coat hulls
- White gel coat decks with non skid areas

Deck Equipment

Foredeck

- 1 deck hatch for technical compartment access
- house battery bank
- Dedicated area for Onan Generator. This boat is also equipped with a secondary generator Northern Lights 14KW generator installed in 2017
- 2000W 24V electric windlass on deck with horizontal gipsy (14mm chain) and remote control
- Chain locker to starboard of the windlass.
- 3 deck lockers 2 to port and 1 to starboard.
- Composite longitudinal compression beam including anchor chain run, forestay chain plate, staysail and gennaker tack fittings (staysail and gennaker optional).

Deck Hardware

- Harken deck gear
- 4 X STA 74.2 Electric winches

Cockpit

- Teak cockpit floor
- L shaped settee
- Storage under settee

- Large teak cockpit table made of 2 separate tops
- 3 door cockpit locker with sink and resin countertop
- Cockpit fridge 80 L (21 US Gal)
- 8 spotlights recessed in hard top ceiling with dimmer switch
- Storage in cockpit ceiling
- Aft crossbeam with 4 storage lockers, sun lounging area,
- 4 teak folding chairs

Accommodations

Salon

- Access from the cockpit through sliding & locking door with latching mechanism inside and out. Half way latching points
- Storage under floors with hinged panels and lifting arm
- 4 opening hatches on the front windows
- Forward window curtains
- Companionway steps port and stbd against coachouse bulkhead
- Companionway steps port and stbd behind mast bulkhead

Port Aft cabin

- Access from the forward port gangway
- Queen size bed (2,05 m/6'9" X 1,60 m/5'3") with side access and wood slats under mattress
- Upholstered bed head board
- Bedside storage
- Under bed storage
- Hanging locker with light and shelves
- 1 opening port hole
- Large one way fixed hull window
- Opaque window curtains
- Opening deck hatch with mosquito screen and blind

Port forward cabin

- Access from the forward companionway via wooden door
- Queen size bed (2,05 m/6'9" X 1,60 m/5'3") with side access and wood slats under mattress
- 2 large storage drawers under bed
- Bedside storage
- Hanging locker with light and shelves
- Storage locker on outboard side
- Shelves on hull side
- Leather storage pouch
- 1 opening port hole

- Large one way fixed hull window
- Opaque window curtains
- Opening deck hatch with mosquito screen and blind
- Direct access to the bathroom (full size mirror behind door)
- Minimum headroom 2.05m (6'9")
- 2 x 220V outlets
- Cabin door with lock
- Upholstered ceiling panels
- General cabin lighting with switches at the entrance and by bed sides + reading lights.
- Indirect lighting from hull side shelves

Port midship cabin

- Access from the forward or aft companionway via wooden door
- Bunk beds with side access and wood slats under mattress
- 2 large storage drawers under bed
- Bedside storage
- Hanging locker with light and shelves
- Storage locker on outboard side
- Shelves on hull side
- Leather storage pouch
- 1 opening port hole
- Large one way fixed hull window
- Opaque window curtains
- Opening deck hatch with mosquito screen and blind
- Direct access to the bathroom (full size mirror behind door)
- Minimum headroom 2.05m (6'9")
- 2 x 220V outlets
- Cabin door with lock
- Upholstered ceiling panels
- General cabin lighting with switches at the entrance and by bed sides + reading lights.
- Indirect lighting from hull side shelves

Galley

- Access from cockpit through sliding glass door and steps
- Access from the salon through companionway steps
- 2 opening deck hatches
- Spotlights at ceiling and indirect lighting from inside the plating

Outboard side

- 2 waste bins under countertop for selective refuse
- 1 double-door side by side fridge/freezer 220V 500l (132 US Gal) with ice maker and

dedicated 24/220V inverter

- Washer/Dryer combo unit
- Dedicated space for dish washer + upper storage
- 3 X 220 V outlets
- Lower storage with shelves
- Opening port hole
- 1 large one way fixed hull window
- 1 double stainless steel sink with stainless steel mixer tap
- Bottles and knives storage
- Liquid soap dispenser
- Upgraded Miele range, oven, and hood

Inboard side

- Built in stainless steel dish rest
- Electric hood over the stove
- Space for multifunction micro-wave oven
- Upper storage cabinets
- Lower storage cabinets with drawers and shelves

- Indirect lighting from upper storage cabinets

- 2 X 220 V outlets

Engine

- 2 Volvo D3-150 HP Diesel engines, 3000 rpm
- Engine throttles and control panel on port and starboard steering station on flybridge
- Conventional stainless steel propeller shafts with "p" brackets
- 2 Gori folding propellers
- Engine access through large deck hatches
- Stainless steel gas struts on hatches
- Ventilation system (natural aspiration and forced extraction)
- 1 x 220 V outlet per engine room
- Engine rooms lights
- Sound insulation of engine compartments: foam on bulkheads

Electrical

220V AC Circuit

- 2 outlets per cabin (owner's cabin : 3), 5 in the saloon, 4 in the galley, one per gangway, 1 per engine compartment, and 1 in the technical compartment

- 220V electric panel with power source selector, voltmeter
- 50 Amp dock inlet in the aft transom

24V circuit

- 24 V 840 Ah AGM service battery bank
- 24V electrical panel with battery bank monitor
- Breaker-box for the 24V system
- 2 engine driven 110 Ah 24V Mastervolt

12 V circuit

- 1 X 12 V 50 Ah start battery per engine
- 2 X 12 V Mastervolt alternators
- 1 X 12 V 50 Ah start battery for the generator

FLYBRIDGE

- Access from cockpit via stairway with teak steps on stainless steel frame
- Flybridge access closing system
- 2 helm stations including
- 1100 mm (3'7") diameter wheels
- Navigation instruments pods
- Engine throttles and control panels on port and starboard steering station
- Cushions for settees + backrest
- 1 steering compass each
- Windlass control on port and starboard steering station
- Large settee across entire width of flybridge
- "L " shaped settee with coffee table
- All lines led to forward part of the flybridge cockpit around 4 electric winches
- 4 lines storage boxes
- Recessed sun lounging area aft of mast base
- 1 storage locker
- Settee and sun lounging cushions

Sails and Rigging

- Carbonfiber "Boulevard" style boom
- Upgraded Hydranet square top mainsail
- Upgraded Hydranet Genoa
- Upgraded Hydranet Jib
- Bowsprit with Mylar Code Zero sail
- Electric furler for both Genoa and Jib Sail

- All sail control lines run to the flybridge for easy shorthanded sailing

Mast/Rigging

- FRP longitudinal crossbeam
- Aluminium transversal crossbeam
- Adjustable lazy-jacks with spreaders

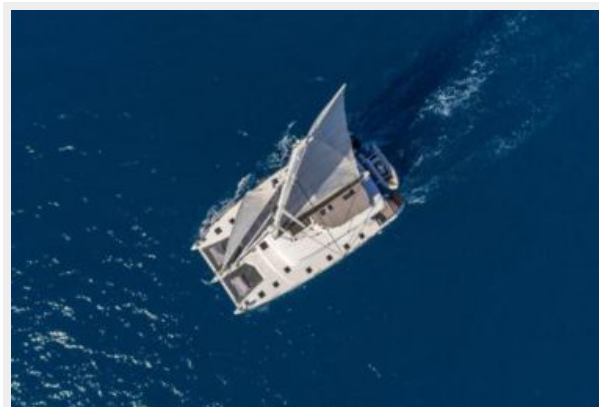
Исключения

При продаже яхты исключаются личные вещи владельца.

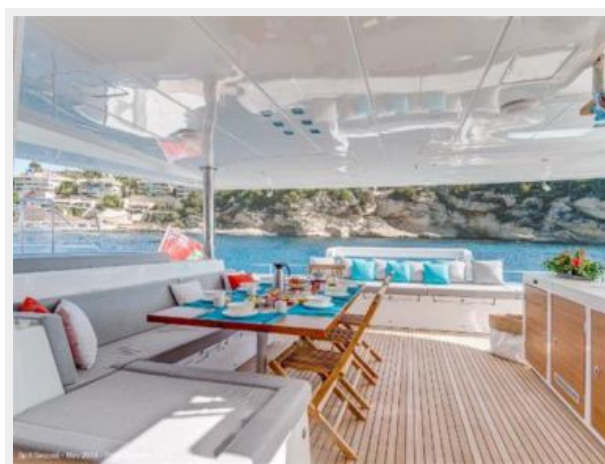
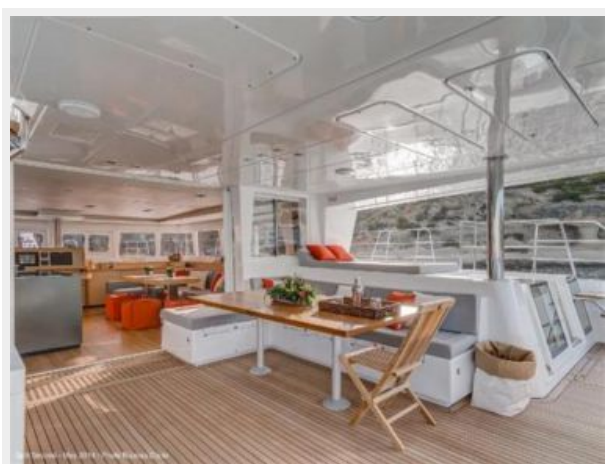
Отказ от ответственности

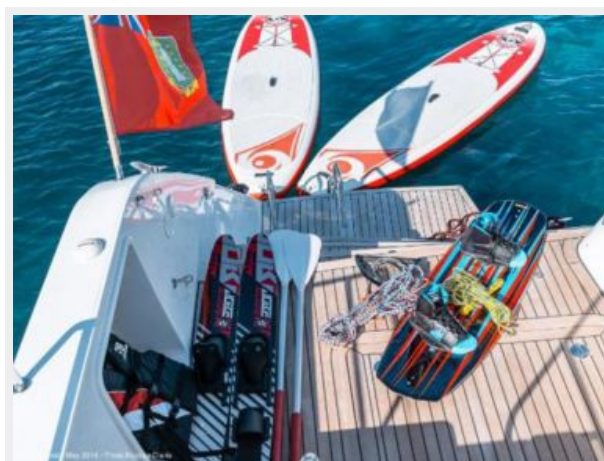
Компания предоставляет описание судна или яхты добросовестно, но не может гарантировать точность этой информации, а также не ручается за техническое состояние. Покупатель должен проинструктировать своих агентов или оценщиков исследовать представленную информацию более подробно, по собственному желанию. Продажа судна или яхты, изменение цены или снятие с продажи будет происходить без предварительного уведомления.

ФОТОГРАФИИ











КОНТАКТЫ

Андрей Шестаков (Andrey Shestakov) – ведущий яхтенный брокер отдела продаж яхт и судов компании Shestakov Yacht Sales Inc. Официальный представитель Shestakov Yacht Sales Inc. для русскоговорящих клиентов в центральном офисе компании в Майами/Форт Лодердейл/Флорида/США.

Контактная информация

Email: andrey@shestakovyachtsales.com

Web: shestakovyachtsales.com

Телефоны

Краснодарский край: **+7(918)465-66-44**

США, Майами, Флорида: **+1(954)274-4435**

Время работы

Понедельник – Суббота: **9:00 - 21:00**
EDT

Воскресенье: **Закрето**

Адрес



Harbour Towne Marina, 850 NE 3rd St,
STE 213, Dania, FL 33004