

AZIMUT 55S — AZIMUT



Builder: [AZIMUT](#)

Year Built: 2014

Model: Motor Yacht

Price: PRICE ON APPLICATION

Location: United States

LOA: 55' 0" (16.76m)

Beam: 15' 5" (4.70m)

Max Draft: 3' 9" (1.14m)

Cruise Speed: 30 Kts. (35 MPH)

Max Speed: 35 Kts. (40 MPH)

Our experienced yacht broker, Andrey Shestakov, will help you choose and buy a yacht that best suits your needs **Azimut 55S — AZIMUT** from our catalogue. Presently, at Shestakov Yacht Sales Inc., we have a wide variety of yachts available on our sale's list. We also work in close contact with all the big yacht manufacturers from all over the world.

If you would like to buy a yacht **Azimut 55S — AZIMUT** or would like help answering any questions concerning purchasing, selling or chartering a yacht, please call **+1(954)274-4435**

TABLE OF CONTENTS

TABLE OF CONTENTS	2
SPECIFICATIONS	3
Overview	3
Basic Information	3
Dimensions	3
Speed, Capacities and Weight	3
Accommodations	4
Hull and Deck Information	4
Engine Information	4
DETAILED INFORMATION	5
Electronics & Equipment	5
Entertainment	5
Hull & Exterior	5
Electrical	6
Interior	6
Disclaimer	7
Exclusions	7
Disclaimer	7
PHOTOS	8
CONTACTS	18
Contact details	18
Telephones	18
Office hours	18
Address	18

SPECIFICATIONS

Overview

The Azimut 55S is truly stunning and has luxury, sporty performance, breathtaking views, and ultimate comfort. From her blunt nose to the huge swim platform with tender garage, with her iconic lines, this express yacht is truly unmatched. On the bow, you will enjoy the new standard for lounge seating offering a large sunpad in addition to bench seating. Sit in the aft cockpit and take in the rays or have cocktails under the sunshade. When you step inside, you will immediately notice the massive mirror tinted windows, 360 views, and a large sunroof. The helm is equipped with Raymarine gold package electronics, joystick controls with dynamic positioning system- skyhook. Below you will find a full beam master, a very spacious forward VIP and to the starboard the third state with twin beds, She is powered with Volvo IPS 600s with only 700 hours and all services are up to date including engine and pods serviced, new bottom paint, and full exterior and interior detail.

**** Do not miss out on this exquisite Sport yacht, being offered at the lowest on the market and ready for sale. ****

Basic Information

Category: Motor Yacht

Model Year: 2014

Year Built: 2014

Country: United States

Dimensions

LOA: 55' 0" (16.76m)

Beam: 15' 5" (4.70m)

Max Draft: 3' 9" (1.14m)

Speed, Capacities and Weight

Cruise Speed: 30 Kts. (35 MPH)

Max Speed: 35 Kts. (40 MPH)

Water Capacity: 156 Gallons

Holding Tank: 59 Gallons

Fuel Capacity: 423 Gallons

Accommodations

Total Cabins: 3

Total Berths: 6

Sleeps: 6

Total Heads: 2

Hull and Deck Information

Hull Material: Fiberglass

Hull Color: White

Engine Information

Engines: 3

Manufacturer: Volvo

Model: IPS 600

Engine Type: Inboard

Fuel Type: Diesel

DETAILED INFORMATION

Electronics & Equipment

5" Ritchie Compass

Raymarine P70T Autopilot

Raymarine 72 mile Radar

Two (2) Raymarine Hybrid Touch GPS

Raymarine 170 GPS

Raymarine Ray260 VHF

Raymarine 170 Depthfinder and in GPS's

Raymarine 170 Speed Log and in GPS's

Quick Chain Counter at Helm

Searchlights

Two Aft Facing Spreader lights

Kohler Generator

Entertainment

Samsung TV on power lift, LG Blu-ray in Salon

Samsung TV in Master, VIP & Starboard Guest Cabins

KVH Tracvision SAT TV

Bose 321 in Salon stereo

Bose Surround Sound in Master

Hull & Exterior

Molded Grey Fiberglass topsides

Black anti-fouling with white boot stripe bottom

White Superstructure

IPS Joystick and Bow Thruster controls

Side Power, Twin 5 Blade in 10" tube Bow Thruster

Volvo T4's, 3 & 4 Blade Duo Props

Windshield washers and wipers

Virtifrigo Ice Maker on Aft Deck

Radar Arch

Light Mast with Radar Array

White Bimini Retractable sun shade

25 kg delta plow with 250' of chain

Electric Winch inside tender garage for dinghy

Opacmare, hydraulic, stainless steel with teak overlay Passerelle

Williams 285 Turbo Jet Tender with Yamaha motor

Electrical

12 Volt Charger - 14 AMP Quick Energy

24 Volt Charger - 60 AMP Quick Energy

50 AMP Cables - 125/250 Volt x 50 ft on glendenning power reel

Interior

Dark Wood Interior Finish

Carpet through-out with wood in Galley and Salon

Oak and Leather Trim

Safe in Master Stateroom

Miele Oven

Four Burner, Miele Electric Stove Top

Kenyon, Single Burner, Electric BBQ on Aft Deck

Convection oven in Galley

Isotherm Refrigerator

Vitrifrigo Freezer

60 L Nautic Electric Hot Water Heater

Water Maker's brand Water Maker

Splendede Combi Unit Washing Machine and Dryer

Disclaimer

The Company offers the details of this vessel in good faith but cannot guarantee or warrant the accuracy of this information nor warrant the condition of the vessel. A buyer should instruct his agents, or his surveyors, to investigate such details as the buyer desires validated. This vessel is offered subject to prior sale, price change, or withdrawal without notice.

Exclusions

Owner's personal belongings.

Disclaimer

The Company offers the details of this vessel or yacht in good faith but cannot guarantee or warrant the accuracy of this information nor warrant the condition of the vessel. A buyer should instruct his representatives, agents, or his surveyors, to investigate such details as the buyer desires validated. This vessel or yacht is offered subject to prior sale, price change, or withdrawal without notice.

PHOTOS





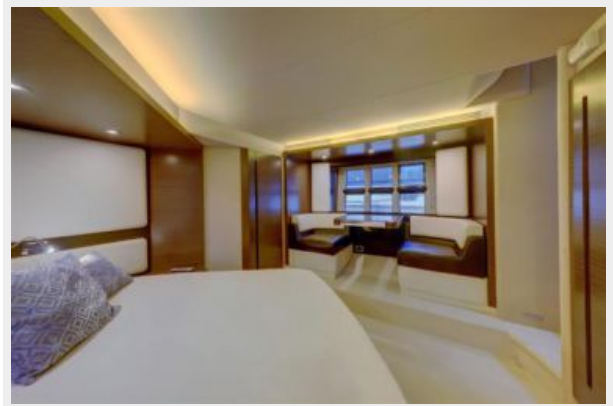
















CONTACTS

Andrey Shestakov, leading yacht broker of the sales department of Shestakov Yacht Sales Inc. Shestakov Yacht Sales Inc., the official representative of the Miami/Fort Lauderdale FL headquarters.

Contact details

Email: andrey@shestakovyachtsales.com

Web: shestakovyachtsales.com/en/

Telephones

USA: +1(954)274-4435

Office hours

Monday – Saturday: **9:00 - 21:00** EDT

Sunday: **closed**

Address



Harbour Towne Marina, 850 NE 3rd St,
STE 213, Dania, FL 33004