

38FT 2005 REGAL COMMODORE 3860 — REGAL



Builder: REGAL

Year Built: 2005

Model: Cruiser

Price: PRICE ON APPLICATION

Location: United States

LOA: 38' 0" (11.58m)

Beam: 13' 0" (3.96m)

Max Draft: 3' 5" (1.04m)

Cruise Speed: 26 Kts. (30 MPH)

Max Speed: 35 Kts. (40 MPH)

Our experienced yacht broker, Andrey Shestakov, will help you choose and buy a yacht that best suits your needs 38ft 2005 Regal Commodore 3860 — REGAL from our catalogue. Presently, at Shestakov Yacht Sales Inc., we have a wide variety of yachts available on our sale's list. We also work in close contact with all the big yacht manufacturers from all over the world.

If you would like to buy a yacht 38ft 2005 Regal Commodore 3860 — REGAL or would like help answering any questions concerning purchasing, selling or chartering a yacht, please call +1(954)274-4435

TABLE OF CONTENTS

| | |
|------------------------------|----|
| TABLE OF CONTENTS | 2 |
| SPECIFICATIONS | 3 |
| Overview | 3 |
| Basic Information | 3 |
| Dimensions | 3 |
| Speed, Capacities and Weight | 3 |
| Accommodations | 4 |
| Hull and Deck Information | 4 |
| Engine Information | 4 |
| PHOTOS | 5 |
| CONTACTS | 11 |
| Contact details | 11 |
| Telephones | 11 |
| Office hours | 11 |
| Address | 11 |

SPECIFICATIONS

Overview

This boat is turn key and ready for her new owner. She has been in freshwater her entire life, but is ready for saltwater if new owner decides to do so. She has been very well maintained and shows very well.

NOTABLE FEATURES

- One Owner
- Freshwater Boat
- Low Hours
- Closed Loop system
- Stainless steel throughout

Basic Information

Category: Cruiser

Sub Category: Express

Model Year: 2005

Year Built: 2005

Country: United States

Dimensions

LOA: 38' 0" (11.58m)

Beam: 13' 0" (3.96m)

Max Draft: 3' 5" (1.04m)

Clearance: 10' 1" (3.07m)

Speed, Capacities and Weight

Cruise Speed: 26 Kts. (30 MPH)

Cruise Speed RPM: 3500 Kts.

Max Speed: 35 Kts. (40 MPH)

Max Speed RPM: 4800 Kts.

Displacement: 19000 Pounds

Water Capacity: 75 Gallons

Holding Tank: 40 Gallons

Fuel Capacity: 277 Gallons

Accommodations

Total Cabins: 2

Total Berths: 2

Total Heads: 2

Hull and Deck Information

Hull Material: Fiberglass

Hull Configuration: Deep Vee

Engine Information

Engines: 2

Manufacturer: Mercruiser

Model: 8.1L

Engine Type: Inboard

Fuel Type: Gas/Petrol

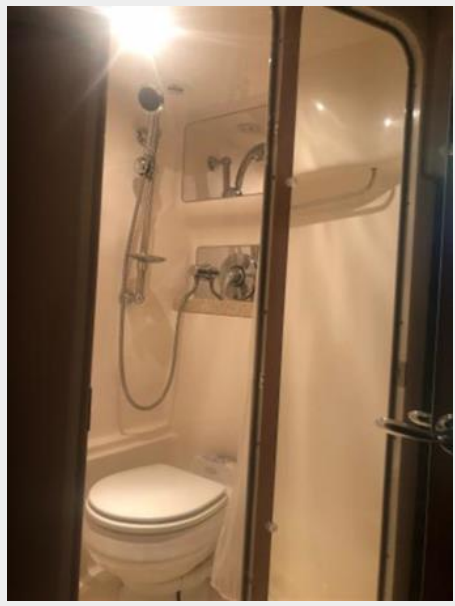
PHOTOS

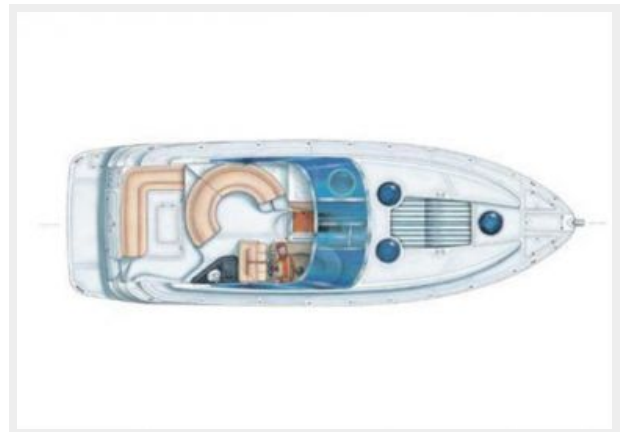












CONTACTS

Andrey Shestakov, leading yacht broker of the sales department of Shestakov Yacht Sales Inc. Shestakov Yacht Sales Inc., the official representative of the Miami/Fort Lauderdale FL headquarters.

Contact details

Email: andrey@shestakovyachtsales.com

Web: shestakovyachtsales.com/en/

Telephones

USA: +1(954)274-4435

Office hours

Monday – Saturday: **9:00 - 21:00** EDT

Sunday: **closed**

Address



Harbour Towne Marina, 850 NE 3rd St,
STE 213, Dania, FL 33004