

42FT 2009 JEANNEAU SUN ODYSSEY 42 DS — JEANNEAU



Builder: JEANNEAU

Year Built: 2009

Model: Deck Saloon

Price: PRICE ON APPLICATION

Location: United States

LOA: 42' 0" (12.80m)

Beam: 13' 6" (4.11m)

Max Draft: 6' 11" (2.11m)

Our experienced yacht broker, Andrey Shestakov, will help you choose and buy a yacht that best suits your needs 42ft 2009 Jeanneau Sun Odyssey 42 DS — JEANNEAU from our catalogue. Presently, at Shestakov Yacht Sales Inc., we have a wide variety of yachts available on our sale's list. We also work in close contact with all the big yacht manufacturers from all over the world.

If you would like to buy a yacht 42ft 2009 Jeanneau Sun Odyssey 42 DS — JEANNEAU or would like help answering any questions concerning purchasing, selling or chartering a yacht, please call +1(954)274-4435

TABLE OF CONTENTS

TABLE OF CONTENTS	2
SPECIFICATIONS	3
Overview	3
Basic Information	3
Dimensions	3
Speed, Capacities and Weight	4
Accommodations	4
Hull and Deck Information	4
Engine Information	4
DETAILED INFORMATION	5
Sail Area	5
Manufacturer Provided Description	5
Helm area	5
Accommodations	5
Electrical	6
Galley	6
Engine Information	6
Deck	6
Additional Description	7
Exclusions	7
Disclaimer	7
PHOTOS	8
CONTACTS	18
Contact details	18
Telephones	18
Office hours	18
Address	18

SPECIFICATIONS

Overview

\$25,000.00 PRICE REDUCTION JULY 2018

BEST BUY ON THE MARKET

The Jeanneau 42DS has long been considered one of the most well thought out designs to come out of Jeanneau's yard.

This yacht is not only designed to sail extremely well, but because of her deck salon arrangement, she has TONS of room down below.

Some key features:

- Generator was rebuilt late 2015
- The sails were replaced in 2013
- Replaced and upgraded batteries
- Full tropical A/C package
- Electric winch
- Furling Mainsail
- Full maintenance logs since new
- July 2018 Haul and paint plus hull wax

Basic Information

Category: Deck Saloon

Sub Category: Cruising Sailboat

Model Year: 2009

Year Built: 2009

Country: United States

Dimensions

LOA: 42' 0" (12.80m)

LWL: 42' 0" (12.80m)

Beam: 13' 6" (4.11m)

Max Draft: 6' 11" (2.11m)

Clearance: 65' 0" (19.81m)

Speed, Capacities and Weight

Water Capacity: 94 Gallons

Holding Tank: 22 Gallons

Fuel Capacity: 34 Gallons

Accommodations

Total Cabins: 2

Total Berths: 2

Total Heads: 2

Hull and Deck Information

Hull Material: Fiberglass

Hull Configuration: Monohull

Engine Information

Engines: 2

Manufacturer: Yanmar

Model: 4JH4E

Engine Type: Inboard

Fuel Type: Diesel

DETAILED INFORMATION

Sail Area

I : 51.58 ft J : 15.83 ft P : 49.83 ft E : 16.00 ft Working Sail Area : 872.00 sq ft

Manufacturer Provided Description

Designed for those who are passionate about sailing, the Sun Odyssey 42DS boasts a modern, fluid design, a rare, timeless elegance, and the comfortable interior layout expected of a sailboat built for cruising, all while delivering a superior performance.

Helm area

- Teak inlay on seating area, transom and transom steps
- Cockpit lockers: 2 lockers under bench seats and lazarette locker to port under the helm seats for technical access to steering system
- Cockpit table: folding injected fibreglass table with storage, cup holders, bottle holders, stainless steel handrail, courtesy lighting, 12v plug
- Gas locker room for 2 gas bottles with connection to gas system and cut-off valve under stove in the galley
- Wheels: 2 leather-covered steering wheels and compasses at each helm station
- Instrumentation: dedicated space for instruments within easy reach of helm positions, room for GPS chartplotter mounted at aft end of cockpit table with easy viewing from each helm
- Engine controls: throttle and engine control panel mounted at starboard helm, engine panel includes fuel gauge, RPM gauge, warning lights, ignition
- Swim ladder: stainless steel folding ladder mounted on swim platform
- Cockpit shower: retractable hot and cold water shower with tap
- Anchor locker: forward, lockable, room for anchor and tackle, integrated windlass area, holder for windlass handle

Accommodations

- Forward owner's cabin with central berth
- Double berth, high-density foam mattress Storage under berth
- Deep cabinet with shelves and hanging rod
- Wood hull liner
- Private forward owner's head compartment with sink, clothes hook, mirror, towel holder, toilet paper holder, wastebasket, cabinet above sink, shower sump with grate and electric drainage pump

- Aft owner's cabin with reading lights at head of berth
- Central double berth with teak trim and padded headboard, high-density foam mattress
- Deep cabinet with shelves and hanging rod
- Seating to either side of the berth with fabric cushions that match saloon fabrics
- Wooden hull liner
- Large head compartment accessible from saloon with sink, separate shower, clothes hook, mirror, towel holder, toilet paper holder, wastebasket, cabinet above sink and shower sump with grate and electric drainage pump

Electrical

- Northern lights 5 Kw Generator
- 120V Shore Power
- AC, DC distribution pannel.
- Air Conditioning throughout.

Galley

- Galley with double sinks with covers and reversible cutting board, chrome plumbing fittings, storage cabinets and drawers
- L-galley to port with glass separator between galley counter and seating area
- Gimballed 2-burner stove with oven with stainless steel protection bar
- Single fridge box with freezer area, wire baskets, interior lighting comes on when door opened, 12v refrigeration and integrated compressor

Engine Information

- Yanmar 4JH4E 54 HP, 39.6Kw latest generation of environmentally friendly engines
- Fully soundproofed engine compartment with engine access behind stairwell and from aft cabin
- Stainless steel propeller shaft with a fixed 3-blade bronze propeller
- Fuel/water separator
- Built-in muffler, forced air ventilation and stainless steel exhaust fitting aft
- Engine hours 940 as of August 2018

Deck

- Deck: Prisma Process® injected deck, ISO gelcoat surface, discontinuous balsa block

coring

- Hull: solid, hand-laid fibreglass, ISO glecoat surface, protective barrier coat
- Structure: 3rd generation inner fibreglass grid, high-load zones cut out and relaminated, drainage system through structure, special emergency repair zone in keel area

Additional Description

- Bow pulpit: open, stainless steel with teak step, navigation lights and integrated wiring for lights
- Stern pulpits: stainless steel with buoy bracket
- Windlass: Quick 1000W combination rope 18mm and chain 10mm, vertical-mounted in the anchor locker, hand-held remote, manual handle
- Anchor roller: double stainless steel fitting with swivelling self-launching roller for hands-free launching and retrieving for tackle
- Lifelines: double level of stainless steel lifelines with PVC coating and stainless steel stanchions
- Toerail: teak profile with integrated chrome chocks and drainage for side deck
- Cleats: 4 x aluminium mooring cleats
- Handrails: sculpted, long stainless steel handrails on coachroof for secure movement forward
- Six person SOLAS B class liferaft, Service due 1/2020

Exclusions

Owner's personal belongings.

Disclaimer

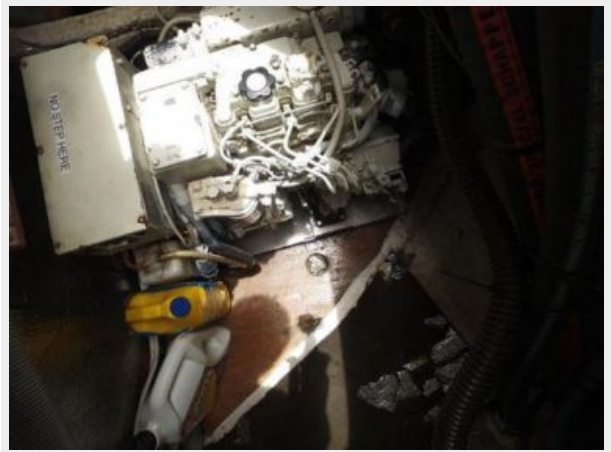
The Company offers the details of this vessel or yacht in good faith but cannot guarantee or warrant the accuracy of this information nor warrant the condition of the vessel. A buyer should instruct his representatives, agents, or his surveyors, to investigate such details as the buyer desires validated. This vessel or yacht is offered subject to prior sale, price change, or withdrawal without notice.

PHOTOS







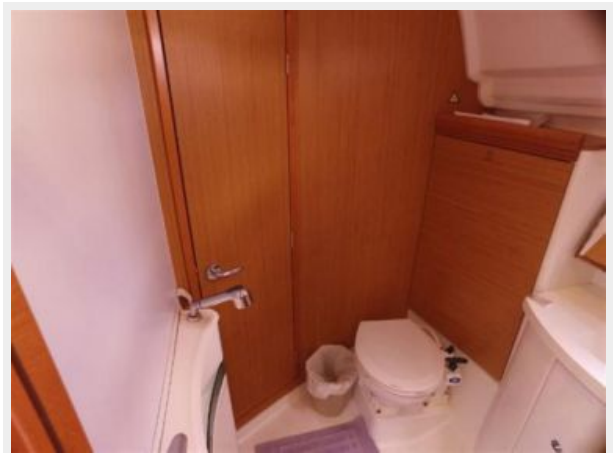














CONTACTS

Andrey Shestakov, leading yacht broker of the sales department of Shestakov Yacht Sales Inc. Shestakov Yacht Sales Inc., the official representative of the Miami/Fort Lauderdale FL headquarters.

Contact details

Email: andrey@shestakovyachtsales.com

Web: shestakovyachtsales.com/en/

Telephones

USA: +1(954)274-4435

Office hours

Monday – Saturday: **9:00 - 21:00** EDT

Sunday: **closed**

Address



Harbour Towne Marina, 850 NE 3rd St,
STE 213, Dania, FL 33004