

## YCM — OVERMARINE GROUP



**Builder:** Overmarine Group

**LOA:** 72' 0" (21.95m)

**Year Built:** 2006

**Beam:** 18' 4" (5.59m)

**Model:** Cruising Yacht

**Max Draft:** 4' 3" (1.30m)

**Price:** PRICE ON APPLICATION

**Location:** United States

Our experienced yacht broker, Andrey Shestakov, will help you choose and buy a yacht that best suits your needs YCM — Overmarine Group from our catalogue. Presently, at Shestakov Yacht Sales Inc., we have a wide variety of yachts available on our sale's list. We also work in close contact with all the big yacht manufacturers from all over the world.

If you would like to buy a yacht YCM — Overmarine Group or would like help answering any questions concerning purchasing, selling or chartering a yacht, please call +1(954)274-4435

# TABLE OF CONTENTS

---

TABLE OF CONTENTS	2
SPECIFICATIONS	3
Overview	3
Basic Information	4
Dimensions	4
Speed, Capacities and Weight	4
Accommodations	4
Hull and Deck Information	4
Engine Information	5
DETAILED INFORMATION	6
Swift Trawler 47 Key Features	6
Exterior	6
Interior	7
Engines	8
Exclusions	8
Disclaimer	8
PHOTOS	10
CONTACTS	18
Contact details	18
Telephones	18
Office hours	18
Address	18

# SPECIFICATIONS

---

## Overview

---

YCM is your invitation to join the Mangusta family with a fast and elegant design that has been tastefully appointed and well maintained by its owner.

Manufactured in 2006, refit in 2013, enjoyed and upgraded along the way including recent engine overhauls with less than 450 hours running time.

- At top speed or cruise, the twin 1500 HP MTU engines deliver the power to gain maximum performance from this time tested Mangusta hull form.
- Bow and stern thrusters make docking even in the tightest quarters a simple affair.
- Below decks the vessel is constructed of high gloss anigre veneers and solid timbers and trimmed out with rich, striking marble tops from Spain. Elegant fabrics, carpets and soft goods complement the modern joinery.
- Full beam master stateroom forward with an ensuite head
- Amidship there is an intimate lounge with entertainment center, oversized windows for views to the sea and an efficient galley
- Aft are two guest cabins one with twin berths and one with a queen, both well appointed also with ensuite heads
- In the forepeak, there is crew accommodation for two persons
- On the main deck, the yacht comes alive with a grand indoor/outdoor entertainment area, the very heart of any Mangusta.
- A full beam sunroof opens to the stars by night or shelters persons within the air conditioned salon during the days.
- A modern helm console and oversized bench seat encourages friends and family to take in the tactical joys of driving such a yacht.
- Aft of the helm is a full bar and buffet set up to support the dining and lounging areas so central to the on-deck salon of each and every Mangusta.
- On the aft deck, there is an oversized sun pad and dual steps to a generous swim step. The transom opens as a garage for tender and toy storage.
- On the bow, a very large sun pad dominates the coach house en route to a concealed anchoring station and a crew cabin accessed via a flush bow hatch.
- Engine room and mechanical spaces include twin generators, water maker, air conditioning compressors, control panels, and more.
- All soles are diamond plate removable type and entire space is insulated for sound and vibration reduction.
- All switching and manifolds are straight forward and easily accessible.

**Vessel is priced to sell and ready for new owners.**

---

## Basic Information

---

**Category:** Cruising Yacht

**Sub Category:** Express

**Model Year:** 2006

**Year Built:** 2006

**Country:** United States

---

## Dimensions

---

**LOA:** 72' 0" (21.95m)

**Beam:** 18' 4" (5.59m)

**Max Draft:** 4' 3" (1.30m)

---

## Speed, Capacities and Weight

---

**Displacement:** 144000 Pounds

**Water Capacity:** 250 Gallons

**Fuel Capacity:** 1390 Gallons

---

## Accommodations

---

**Total Cabins:** 4

**Total Berths:** 6

**Total Heads:** 4

---

## Hull and Deck Information

---

**Hull Material:** Fiberglass

## Engine Information

---

**Engines:** 2

**Manufacturer:** MTU

**Model:** 10V 2000 M93CR

**Engine Type:** Inboard

**Fuel Type:** Diesel

---

# DETAILED INFORMATION

---

## Swift Trawler 47 Key Features

---

- Big Galley with an open layout in the salon
- Classic asymmetrical swift trawler design
- Huge Flybridge with seating on both sides of the flybridge
- Helmstation is now centered to offer the best view for docking and driving while underway
- She comes equipped with Beneteau Ship Control
- Twin Cummins QSB6.7's 425HP comes standard
- Top Speed of 25 knots
- You can go 400 Nautical Miles at 14-knot cruise speed

## Exterior

---

### Deck

- Gangway door to starboard
- Double Stainless steel bow fitting
- 2000 W Vertical electrical windlass
- Stainless steel gunwale guards
- Stainless steel pulpit, open and surrounding cockpit up to steps

### Cockpit

- Self-Bailing Cockpit
- Lockers in cockpit bottom gas piston assisted and lockable
- Gas cylinder locker integrated into the cockpit aft bench
- Hot/cold water cockpit shower
- Double port cockpit access door
- Swimming platform with stringer and battens in natural teak
- 1 PMMA access door at the starboard side deck from the cockpit

### Flybridge

- Flybridge self-bailing
- Retractable stainless steel staircase with double flybridge access ramp with teak steps
- Stainless steel pulpit surrounding aft of flybridge
- Central steering console
- Control panel including Electrical engine controls, Electric windlass control, Thruster and Flaps
- Hydraulic steering
- Flybridge lounge, composed of \* 1 bench seats in L shape with built-in storage and an

extendable teak table

## Interior

---

### Salon

- Sofa convertible to double berth
- Dividing rail and curtains for berth
- Roman shutters
- Pouf with storage
- 2 Folding armchairs
- Semi-folding, adjustable height, varnished wood saloon table
- Storage units with 3 white lacquered slatted door
- Sliding aft 3 single disappearing door aft bay with black lacquered aluminum frame
- Leather sheathed stainless steel handrail in cockpit deckhead
- MP3, USB, IPOD® player with 2 speakers in the wheelhouse, 2 speakers in the cockpit and 2 flybridge speakers

### Galley

- L-shaped galley with opening window - Includes: - Corian countertop -2 Stainless steel sinks with cold/hot water mixer taps under pressure - Gas oven - 3-burner hob and oven with protective glass cover - 144 L fridge with 2 drawers - Cutlery drawer - Stowage and drawers - Double dustbin

### Steering Station

- Clear glass windscreen with aluminum frames black lacquered
- Anti-reflective coating
- 3 Synchronized windscreen wipers
- Engine dials: Revolution counter, Fuel gauge, Warnings, Tiller angle indicator, Flap indicators
- Double tilting pilot bench seat
- Removable floor step
- Sliding side door with direct access to catwalk

### Owners Cabin Forward

- Large sliding access door
- Double berth
- Storage under berth
- Hanging locker with lighting
- Cupboard with shelves

### Owners Cabin Head

- Separate shower compartment with seat and hull porthole Deck hatch with mosquito screen/blind
- Top and bottom cupboard
- Electric toilet flushing with fresh water and salt water

### VIP Cabin Port Side

- 2 Single beds convertible into double beds
- Bedside table
- Cupboards
- Hull window with opening porthole and blackout blind

### Third Cabin Starboard

- Double Berth
- Bedside table
- Cupboards
- Hull window with opening porthole and blackout blind

### Head Aft

- Mirror
- Top and Bottom Cupboard
- 2 opening portholes
- Separate shower

## Engines

---

• Shaft line propulsion • Four-blade propellers • Cummins QSB 6.7L twin engines 425 HP • Fuel filters • Seawater filters • Engine room soundproofed with high-density foam (40mm thick) • Air intake for cooling the engine compartment on the port hull plating • 1 Extinguisher • Double fuel tank filling cap • 2 Aluminium fuel tanks (Capacity = 2 x 965 L / 2 x 255 US Gal) inter-connected and pre-fitted for FPS (Fuel Polishing System) connection system • Steering system: - 2 Underhung rudders stainless steel - Hydraulic steering - Electric trim tabs

## Exclusions

---

Owner's personal belongings.

## Disclaimer

---

The Company offers the details of this vessel or yacht in good faith but cannot guarantee or warrant the accuracy of this information nor warrant the condition of the vessel. A buyer should instruct his representatives, agents, or his surveyors, to investigate such details as the buyer



desires validated. This vessel or yacht is offered subject to prior sale, price change, or withdrawal without notice.

# PHOTOS









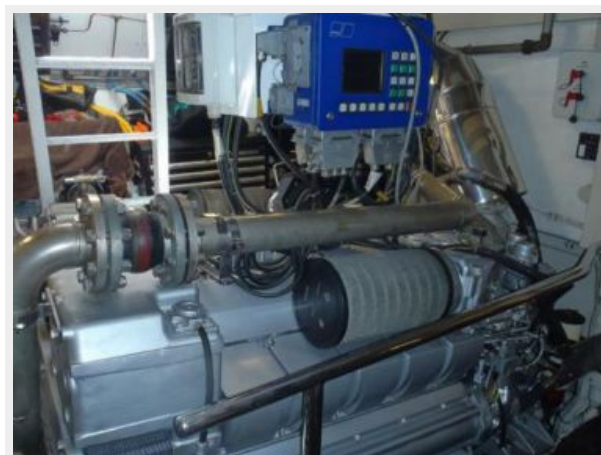
















# CONTACTS

---

Andrey Shestakov, leading yacht broker of the sales department of Shestakov Yacht Sales Inc. Shestakov Yacht Sales Inc., the official representative of the Miami/Fort Lauderdale FL headquarters.

## Contact details

---

Email:  
**andrey@shestakovyachtsales.com**

Web: [shestakovyachtsales.com/en/](http://shestakovyachtsales.com/en/)

## Telephones

---

USA: **+1(954)274-4435**

## Office hours

---

Monday – Saturday: **9:00 - 21:00 EDT**

Sunday: **closed**

## Address

---



Harbour Towne Marina, 850 NE 3rd St,  
STE 213, Dania, FL 33004