

## BANK ON IT — HATTERAS



**Builder:** HATTERAS

**LOA:** 68' 0" (20.73m)

**Year Built:** 2008

**Beam:** 21' 6" (6.55m)

**Model:** Sport Fisherman

**Min Draft:** 5' 0" (1.52m)

**Price:** PRICE ON APPLICATION

**Location:** United States

Our experienced yacht broker, Andrey Shestakov, will help you choose and buy a yacht that best suits your needs **Bank On It — HATTERAS** from our catalogue. Presently, at Shestakov Yacht Sales Inc., we have a wide variety of yachts available on our sale's list. We also work in close contact with all the big yacht manufacturers from all over the world.

If you would like to buy a yacht **Bank On It — HATTERAS** or would like help answering any questions concerning purchasing, selling or chartering a yacht, please call **+1(954)274-4435**

# TABLE OF CONTENTS

TABLE OF CONTENTS	2
SPECIFICATIONS	4
Basic Information	4
Dimensions	4
Speed, Capacities and Weight	4
Accommodations	4
Hull and Deck Information	4
Engine Information	5
DETAILED INFORMATION	6
Recent Updates 2017-2018	6
Salon	7
Pantry	7
Galley	7
Dinette	7
Master Stateroom	8
Master Head	8
VIP Stateroom	8
VIP Head	9
Guest Stateroom - Starboard	9
Guest Head - Starboard	9
Guest Stateroom - Port	9
Guest Head - Port	10
Cockpit	10
Electronics and Navigational Equipment	11
Enclosed Flybridge	11
Tower	12
Engine Room	12
Fishing Equipment	12

Tender/Bow	13
Broker Remarks	13
Exclusions	13
Disclaimer	13
PHOTOS	14
CONTACTS	19
Contact details	19
Telephones	19
Office hours	19
Address	19

# SPECIFICATIONS

## Basic Information

Category: Sport Fisherman	Sub Category: Convertible
Model Year: 2008	Year Built: 2008
Country: United States	Fly Bridge: Yes
Cockpit: Yes	

## Dimensions

LOA: 68' 0" (20.73m)	Beam: 21' 6" (6.55m)
Min Draft: 5' 0" (1.52m)	

## Speed, Capacities and Weight

Water Capacity: 400 Gallons	Holding Tank: 125 Gallons
Fuel Capacity: 2100 Gallons	

## Accommodations

Total Cabins: 4	Total Berths: 6
Sleeps: 8	Total Heads: 4

## Hull and Deck Information

Hull Material: Fiberglass	Hull Color: White
---------------------------	-------------------

## Engine Information

---

**Engines:** 2

**Manufacturer:** Caterpillar

**Model:** C32-A

**Engine Type:** Inboard

**Fuel Type:** Diesel/Electric

---

# DETAILED INFORMATION

---

## Recent Updates 2017-2018

---

### 2017

- Pipewelder Tower with Controls and Steering
- Clear Cote Windows, Bowrail, Outriggers and Tower
- Teak Deck and Mezzanine
- Black Mask Painted and Clear Coated
- All Nonskid Repainted
- Windows Recaulked
- (2) Garmin GPS 7616
- Garmin GPS 7608
- Garmin GPS 7612
- Garmin Chirp Sounder with Airmar Transducer
- (2) Simrad Autopilot AP 26
- (2) Icom VHF Radio
- Sirius XM Satellite Weather
- Interior Soft Goods in All Staterooms
- Granite Counter Tops and Backsplash in Heads
- Sink Fixtures in All Heads
- Wallpaper in All Heads
- (2) More AC Units Added
- Granite Dinette Table Top
- Hunter Douglas Electric Blinds in Salon
- Apple TV in Salon
- Bridge AC Unit
- Washing Machine
- Hydraulic Steering Ram
- Stabilizers Rebuilt with New System Hardware
- (2) 24V Outlets in Cockpit
- Tuna Tubes and Outlets in Cockpit
- Fishbox Lazzarette Hoses Replaced
- Horns Replaced
- Cockpit Mezzanine Cushions Replaced
- Caterpillar 1000 Hour Service Completed

### 2018

- Bottom Painted
- Hull Detailed and Waxed
- Props Serviced at Treasure Coast Propeller
- Shaft Seals

- Prop Speed

---

## Salon

---

- Upgraded U-Shaped Leather Sofa with Storage Underneath
- Coffee Table with Storage
- Cherry Interior with Raised Panel Cabinetry Throughout
- Hunter Douglass Electric Blinds
- Swivel Barrel Chair
- 42" Pioneer Flatscreen TV
- Scotsman Ice Maker
- Bottle Storage
- LED Lighting
- Surround Sound Boston Speakers
- SMX AC Control
- KEP 15" Screen/Systems Monitor

---

## Pantry

---

The port walk-in pantry is very large with shelving and endless storage. The starboard walk-in pantry has the ships AV system ,Netgear, Direct TV units, Denon receivers and Xantech tuner. The central vacuum system and U-Line Freezer is located here as well.

---

## Galley

---

- New Granite Countertops with Backsplash
- Cherry Raised Panel Cabinetry with Large Storage Drawers
- Hunter Douglas Electric Blinds
- Kitchen Aide 4-Burner Cooktop
- Sharp Microwave/Convection Oven
- (2) Subzero Freezer/Refrigeration Drawers
- Stainless Steel Sink with New Fixture
- Large Cabinet Storage Throughout Galley
- Amtico Flooring
- Whirlpool Trash Compactor
- Garbage Disposal

---

## Dinette

---

- Custom U-Shape Dinette Seating with Storage
- NEW Granite Dinette Table Top
- NEW 55" TV on Dinette Bulkhead
- Sony Soundbar
- LED Lighting
- Amtico Flooring

---

## Master Stateroom

---

- Full Beam Master Stateroom
- Walk Around King Size Ben with Nightstands on Each Side and Storage
- Cherry Wood Cabinetry and Finish Throughout
- Port and Starboard Dressers
- Whisper Wall Padded Wall Panels
- Walk In Cedar Lined Hanging Locker with Storage and Stereo Controls
- 34" Flatscreen Samsung TV
- Custom Mattress with New Bed Coverings
- Amsec Electronic Safe

---

## Master Head

---

- NEW Granite Counter Tops
- NEW Sink Fixtures
- Head Hunter Head
- Cherry Wood Credenza with Mirrored Vanity
- Shower with Glass Door
- Linen Closet
- Mirrored Ceiling
- Amtico Flooring
- Custom Wallpaper

---

## VIP Stateroom

---

- Queen Berth with Mirrored Headboard and Cedar Lined Storage Underneath Accessed by Pneumatic Cylinders
- DC Voltage Lights Under Berth
- Cherry Wood Finish on Cabinetry
- Built in Dressers, Port and Starboards
- (2) Cedar Lined Lockers
- Electronic Safe
- Bomar Overhead Hatch



- Whisper Wall Headliner
- Dimmable Lights
- 30" Flatscreen Sony TV

---

## VIP Head

---

- Private Access Through VIP Stateroom
- Mirrored Ceiling
- Custom Wallpaper
- Cherry Wood Credenza with Mirrored Vanity
- Circular Shower
- Head Hunter Head
- Amtico Flooring
- Granite Counter Top with New Fixture
- Bomar Hatch

---

## Guest Stateroom - Starboard

---

- Twin Berths with Upholstered Headboards and Storage Beneath
- Nightstand with Drawer
- Cedar Lined Hanging Locker
- Pocket Door with Head Access
- 24" Flatscreen Samsung TV
- LED Lighting
- Stereo Speakers

---

## Guest Head - Starboard

---

- NEW Granite Counter Tops with New Fixture
- Custom Wallpaper
- Cherry Wood Credenza with Mirrored Vanity
- Mirrored Ceiling
- Circular Shower
- Amtico Flooring
- Head Hunter Head
- Bomar Hatch

---

## Guest Stateroom - Port

---

- Upper and Lower Single Berths

- Cedar Lined Storage Under Lower Berth
- Cedar Lined Hanging Closet with Stereo Control
- 24" Flatscreen Samsung TV
- Cherry Wood Dresser
- Full Length Mirror
- Private Access to Head
- Stereo Speakers

---

## Guest Head - Port

---

- NEW Granite countertops with NEW Fixtures
- Cherry Credenza with Mirrored Vanity
- Mirrored Ceiling
- Access From Companionway and Port Guest Stateroom
- Head Hunter Head
- Circular Shower
- Amtico Flooring

---

## Cockpit

---

- Air Conditioned Mezzanine Seating
- NEW Cushions for Mezzanine Seating
- NEW Teak Deck and Mezzanine
- Mezzanine Freezer and Refrigeration
- Refrigerated Drink Box
- Kenyon Built in Electric BBQ Grill - Starboard Side
- Bluewater Fighting Chair with Rocket Launcher
- (2) 24V Electric Reel Plugs
- Transom Livewell
- Tuna Tubes with On Deck Plumbing
- Transom Door
- (4) Underwater Lights
- In Deck Fishboxes
- Port and Starboard Cable Master
- Tackle Drawers
- JL Audio Speaker
- Stereo
- Engine Room Access
- Cockpit Controls
- Pneumatic Salon Door Entry
- Eskimo Ice Chipper
- Camera

- (13) Rod Holders

---

## Electronics and Navigational Equipment

---

- (2) Garmin GPS 7616
- Garmin GPS 7608
- Garmin GPS 7612
- Garmin CHIRP Sounder with Airmar Transducer
- (2) Simrad AP26 Autopilot
- (1) Icom M604 VHF Radio
- Sirius SM Satellite Weather
- FLIR Night Vision
- ACR-URP-102 Spot Light
- Furuno GP-330 GPS Display
- Furuno Network Sounder
- Furuno RD-33 Depth, Temperature Display
- Furuno 72 Mile 12kw Radar
- Furuno T2 Blackbox System 17" Monitor
- KVH HD 7 SAT TV Dome
- Wireless Router
- ABT Track Stabilizer with System Upgrade
- Hatteras Central Computer System

---

## Enclosed Flybridge

---

- Air Conditioned Enclosed Bridge
- U-Shape Seating with Granite Table
- Drop down 17" TV
- Cherry Wood Cabinetry with Granite Countertops
- Pompanette Helm Chair
- Pompanette Port and Starboard Seating
- Storage Under U-Shaped Couches
- U-Line Refrigerator with Freezer and Ice Maker
- Aft Bridge Helm Station with Full Controls
- Aft Bridge Seating with Storage
- Center Line Ladder for Tower
- Custom Helm/Dash
- LED Lighting
- Boston Overhead Speakers
- Full Carpet Runner

- Bow Thruster

---

## Tower

---

- Pipewelders Tower with Centerline Ladder
- Hydraulic Riggers with 44' Quad Spreaders
- Garmin 7608 GPS Plotter
- Simrad AP26 Remote Head
- Icom M604 VHF Radio

---

## Engine Room

---

- Twin Caterpillar C32-A 1800 HP with Platinum Warranty Through 2019
- (2) Onan 27.5 kw Generators
- (3) Raymarine Engine Room Cameras
- Marine Exhaust Risers
- Triple Racor 1000 Fuel Filters for Each Main Engine
- Fuel Priming System
- Oil Change System
- (2) Sea Recovery 1800 GPD Water Makers
- Eskimo Ice Chipper
- Gas Water Separator Mufflers for Generators
- Air Compressor 200 psi
- Dripless Shaft Logs
- Upgraded Fuel Transfer System
- Schneider Engine Room Exhaust Fans
- Head Hunter Fresh Water Pumps
- Sea Star Power Steering System
- Battery Disconnect Switches
- Seafire FM-200 Fire Suppression System
- American Bow Thruster Reservoir Tank
- Phase Three Smart Charger
- CAT Engine Display Package

---

## Fishing Equipment

---

- Bluewater Fighting Chair with Rocket Launcher
- Miya Epoch Electric Teaser Reels
- Tuna Tubes
- Transom Mount Livewell
- In Deck Fish Boxes

- (13) Rod Holders
- Cockpit Electric Reel Plugs

---

## Tender/Bow

- 2010 Novurania 400 DL Tender with NEW Yamaha 90 4-Stroke Engine
- 1700 lb UMT Davit on Bow
- Pulpit with Lewmar Anchor and Windlass

---

## Broker Remarks

"Bank On It" is a beautiful captain maintained 68' enclosed bridge Hatteras Convertible. She is a 2008 model that was purchased in 2010 as "new". The Caterpillar Platinum Warranty was commissioned at that time giving her Platinum coverage until 2019. "Bank On It" has a spacious four stateroom, four head interior layout. The interior soft goods on the vessel were updated throughout in 2017. New granite countertops and back splash were installed in the galley, heads and dinette, as well as new wallpaper and electric Hunter Douglas blinds in the salon. This vessel is equipped, rigged, and ready for her next cruising excursion or offshore fishing trip.

---

## Exclusions

Owner's personal belongings.

---

## Disclaimer

The Company offers the details of this vessel or yacht in good faith but cannot guarantee or warrant the accuracy of this information nor warrant the condition of the vessel. A buyer should instruct his representatives, agents, or his surveyors, to investigate such details as the buyer desires validated. This vessel or yacht is offered subject to prior sale, price change, or withdrawal without notice.

# PHOTOS

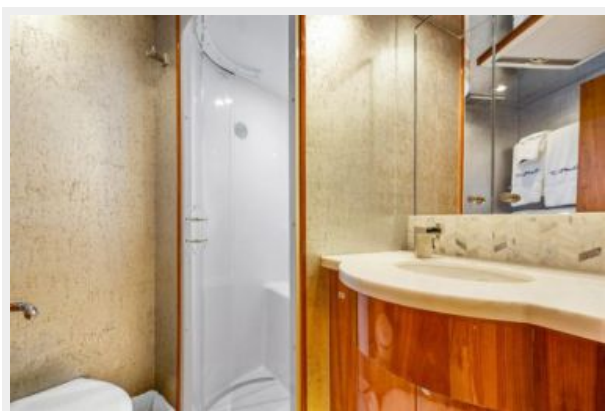
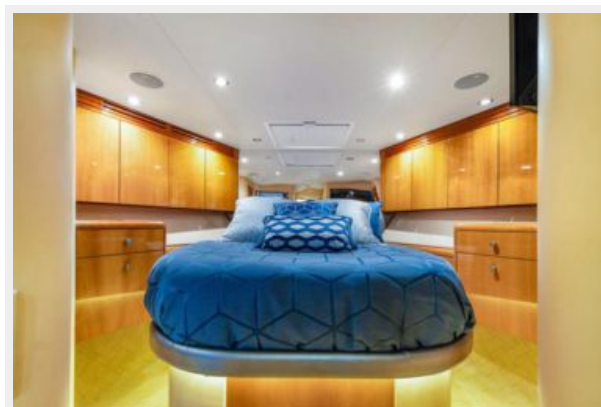














# CONTACTS

---

Andrey Shestakov, leading yacht broker of the sales department of Shestakov Yacht Sales Inc. Shestakov Yacht Sales Inc., the official representative of the Miami/Fort Lauderdale FL headquarters.

## Contact details

---

Email: **andrey@shestakovyachtsales.com**

Web: [shestakovyachtsales.com/en/](http://shestakovyachtsales.com/en/)

## Telephones

---

USA: **+1(954)274-4435**

## Office hours

---

Monday – Saturday: **9:00 - 21:00 EDT**

Sunday: **closed**

## Address

---



Harbour Towne Marina, 850 NE 3rd St,  
STE 213, Dania, FL 33004