

## BLACK ICE — AZIMUT YACHTS



**Builder:** AZIMUT YACHTS

**Year Built:** 2008

**Model:** Motor Yacht

**Price:** PRICE ON APPLICATION

**Location:** United States

**LOA:** 68' (20.73m)

**Beam:** 17.08

**Max Draft:** 5' 2" (1.57m)

**Cruise Speed:** 30 Knots Kts. (35 MPH)

**Max Speed:** 35 Knots Kts. (40 MPH)

Our experienced yacht broker, Andrey Shestakov, will help you choose and buy a yacht that best suits your needs **Black Ice — AZIMUT YACHTS** from our catalogue. Presently, at Shestakov Yacht Sales Inc., we have a wide variety of yachts available on our sale's list. We also work in close contact with all the big yacht manufacturers from all over the world.

If you would like to buy a yacht **Black Ice — AZIMUT YACHTS** or would like help answering any questions concerning purchasing, selling or chartering a yacht, please call **+1(954)274-4435**

---

# TABLE OF CONTENTS

---

TABLE OF CONTENTS	2
SPECIFICATIONS	3
Overview	3
Basic Information	3
Dimensions	3
Speed, Capacities and Weight	4
Accommodations	4
Hull and Deck Information	4
Engine Information	4
PHOTOS	5
CONTACTS	15
Contact details	15
Telephones	15
Office hours	15
Address	15

---

# SPECIFICATIONS

---

## Overview

---

Open to trade-ins.

Without a doubt, the best priced and cleanest 68 S on the market. The yacht just completed a \$150,000 Refit that included:

- New black hull paint
- All new outside soft goods
- All new salon soft goods
- New carpeting
- New wall covers on all staterooms
- All new headliner
- New microwave
- 3 New flat screen TVs
- New chillers on A/C system
- Full bottom job including running gear

All services for both engines and generator just completed.

## Basic Information

---

**Category:** Motor Yacht

**Model Year:** 2008

**Year Built:** 2008

**Country:** United States

## Dimensions

---

**LOA:** 68' (20.73mm)

**Beam:** 17.08

**Max Draft:** 5' 2" (1.57mm)

---

## Speed, Capacities and Weight

---

**Cruise Speed:** 30 Knots Kts. (35 MPH)

**Max Speed:** 35 Knots Kts. (40 MPH)

**Water Capacity:** 251 Gallons

**Holding Tank:** 88 Gal Gallons

**Fuel Capacity:** 845 Gal Gallons

---

## Accommodations

---

**Total Cabins:** 3

**Total Berths:** 4

**Sleeps:** 6

**Total Heads:** 3

---

## Hull and Deck Information

---

**Hull Material:** Fiberglass

---

## Engine Information

---

**Engines:** 2

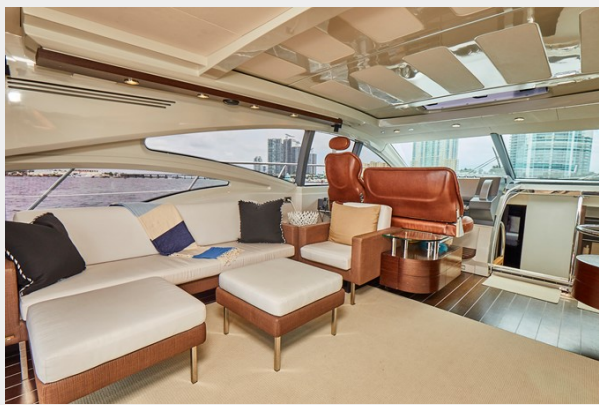
**Manufacturer:** MAN

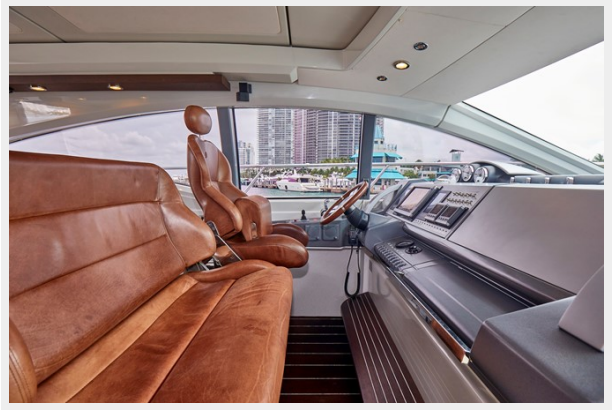
**Engine Type:** Inboard

**Fuel Type:** Diesel

# PHOTOS

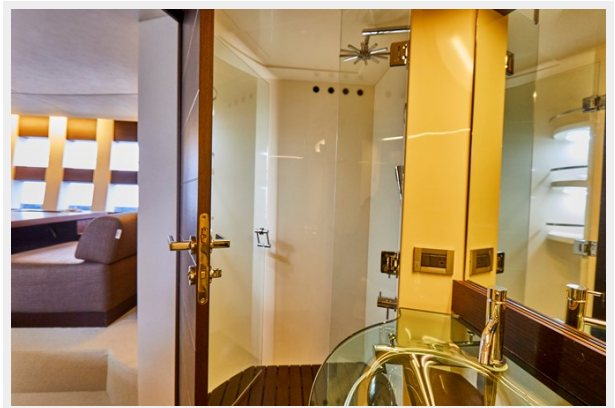


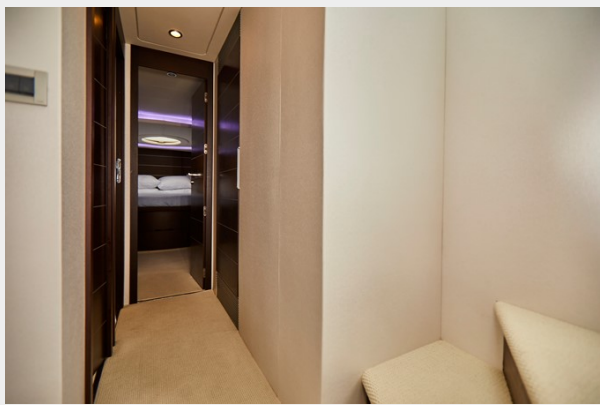




















# CONTACTS

---

Andrey Shestakov, leading yacht broker of the sales department of Shestakov Yacht Sales Inc. Shestakov Yacht Sales Inc., the official representative of the Miami/Fort Lauderdale FL headquarters.

## Contact details

---

Email: [andrey@shestakovyachtsales.com](mailto:andrey@shestakovyachtsales.com)

Web: [shestakovyachtsales.com/en/](http://shestakovyachtsales.com/en/)

## Telephones

---

USA: +1(954)274-4435

## Office hours

---

Monday – Saturday: **9:00 - 21:00** EDT

Sunday: **closed**

## Address

---



Harbour Towne Marina, 850 NE 3rd St,  
STE 213, Dania, FL 33004