

OWL'S NEST — MERRITT BOAT WORKS



Builder: MERRITT BOAT WORKS

Year Built: 2009

Model: Sport Yacht

Price: PRICE ON APPLICATION

Location: United States

LOA: 72' 0" (21.95m)

Beam: 19' 5" (5.92m)

Max Draft: 5' 6" (1.68m)

Cruise Speed: 30 Kts. (35 MPH)

Max Speed: 42 Kts. (48 MPH)

Our experienced yacht broker, Andrey Shestakov, will help you choose and buy a yacht that best suits your needs **OWL'S NEST — MERRITT BOAT WORKS** from our catalogue. Presently, at Shestakov Yacht Sales Inc., we have a wide variety of yachts available on our sale's list. We also work in close contact with all the big yacht manufacturers from all over the world.

If you would like to buy a yacht **OWL'S NEST — MERRITT BOAT WORKS** or would like help answering any questions concerning purchasing, selling or chartering a yacht, please call **+1(954)274-4435**

TABLE OF CONTENTS

| | |
|--------------------------------------|----|
| TABLE OF CONTENTS | 2 |
| SPECIFICATIONS | 4 |
| Overview | 4 |
| Basic Information | 4 |
| Dimensions | 4 |
| Speed, Capacities and Weight | 4 |
| Accommodations | 4 |
| Hull and Deck Information | 5 |
| Engine Information | 5 |
| DETAILED INFORMATION | 6 |
| Vessel Walkthrough | 6 |
| Electrical Equipment | 6 |
| Air Conditioning | 7 |
| Other Machinery | 7 |
| Electronics and Navigation Equipment | 7 |
| Fly Bridge | 7 |
| Tower | 8 |
| Cockpit and Fishing Equipment | 8 |
| Galley and Laundry Equipment | 8 |
| Deck and Hull | 9 |
| Security Equipment | 9 |
| Fire Fighting and Safety Equipment | 9 |
| Exclusions | 9 |
| Exclusions | 9 |
| Disclaimer | 9 |
| PHOTOS | 11 |
| CONTACTS | 16 |
| Contact details | 16 |

| | |
|--------------|----|
| Telephones | 16 |
| Office hours | 16 |
| Address | 16 |

SPECIFICATIONS

Overview

OWL'S NEST is a pedigreed custom sportfish. This boat is tournament rigged and ready for serious fishing. 2400 HP MTU Power. Low Hours. Mezzanine with A/C. Jack Hopewell Tower. Must See!

Basic Information

Category: Sport Yacht

Sub Category: Sport Fisherman

Model Year: 2009

Year Built: 2009

Country: United States

Vessel Top: Full / Tuna Tower

Fly Bridge: Yes

Cockpit: Yes

Dimensions

LOA: 72' 0" (21.95m)

Beam: 19' 5" (5.92m)

Max Draft: 5' 6" (1.68m)

Speed, Capacities and Weight

Cruise Speed: 30 Kts. (35 MPH)

Max Speed: 42 Kts. (48 MPH)

Max Speed RPM: 2450 Kts.

Displacement: 125000 Pounds

Water Capacity: 400 Gallons

Holding Tank: 150 Gallons

Fuel Capacity: 2350 Gallons

Accommodations

Total Cabins: 4

Total Heads: 3

Hull and Deck Information

Hull Material: Composite Fiberglass

Hull Designer: Merritt's Boat & Engine Works

Exterior Designer: Merritt's Boat & Engine Works

Interior Designer: Merritt's Boat & Engine Works

Engine Information

Engines: 2

Manufacturer: MTU

Model: 16V2000 M93

Engine Type: Inboard

Fuel Type: Diesel

DETAILED INFORMATION

Vessel Walkthrough

Entering the cockpit you take two steps up to the air conditioned mezzanine deck with comfortable seating and a arm rest drink box.

Upon entering the salon through a sliding air door, to port is a large wrap around sofa with storage underneath and a custom teak coffee table. To starboard is the entertainment center aft and a single chair with a bar area behind two sliding doors. Forward is a large dinette with seating for four. Forward to port is the open galley with cooktop and double sink and under counter oven and refrigeration and freezer. Ample storage cabinets with sliding drawers are located forward with built in microwave and coffee maker. Wood blinds raise and lower over all salon windows.

Going forward down the companionway, to port is the master with walk around queen bed, large double hanging locker and elegant ensuite head and shower. To starboard aft is the crew quarters with over/under bunks and two hanging lockers with head and shower forward that adjoins another stateroom with single bunk and hanging lockers and drawers underneath.

The VIP is forward with a walk around queen bed. Two hanging lockers are to starboard and the ensuite head and shower is forward.

The well appointed flybridge is equipped with three helm chairs and large bench seats with rod storage underneath. All navigation equipment is located in the teak bridge console behind clear sliding panels. A large refrigerated drink box is located forward to starboard and a large sink to port.

Entrance to the well maintained engine room and pump room is from the cockpit mezzanine.

Electrical Equipment

- Output: 32 KW
- Generators: Onan Hours: 2390 Port 2360 Stbd
- Gen Fuel Consumption: 3 GPH
- Shore Power: 2X50 Amp-single phase-240 volts-60khz
- Batteries: (6) Odyssey
- Main Engine: Odyssey 24 v
- Generator Starting: Odyssey 24 v
- General Service: Odyssey 24 v
- Emergency: Odyssey 24 v

Air Conditioning

- Type: Chilled water (2) Marine Air

Other Machinery

- Watermaker: (2) Watermakers Inc. 1950 GPD
- Bow Thruster: Muir Hydraulic
- Steering System: Hynautic
- Fuel Separators/Filtration: (6) Racor
- Fresh Water System: (3) Headhunter Mach 5
- Bilge Water System: Rule Pumps
- Air Compressor: Jun-Air

Electronics and Navigation Equipment

- Ships Printer: HP Photosmart 5520
- Main A/V: Crestron
- Satellite TV System: KVH - Direct TV / DVR (3)
- Video Equipment: Kalaidascope Movie Player
- TVs: (6)
- Audio Equipment: Request Audio Music
- DVDs: Sony Blue Ray

Fly Bridge

- Radar #1: Furuno 25 kw
- Radar #2: Furuno 12 kw
- Autopilot: Simrad
- GPS #1: Garmin 7610
- GPS #2: Furuno Nav Net
- Depth & Video Sounder: Furuno FCV-1200L, Garmin
- Night Vision: Flir
- Spotlight: ACR
- Compasses: Ritchie
- Monitors: (2) 21" KEP - 19"Garmin
- VHF Fixed: (2) Icom 504
- Single Side Band: M809
- AIS: Furuno Universal FA-150

- Bow Thruster Controls: In Throttle Levers

Tower

- Furuno Nav Net
- Furuno RD-30
- Icom IC-M504 VHF
- Simrad Autopilot
- Kahlenberg Horns
- Ritchie Compass

Cockpit and Fishing Equipment

- VEI Monitor in stbd window for all inputs
- (2) large refrigeration boxes
- (1) large freezer box
- Eskimo ice machine
- (4) 12 volt - 30 amp electric reel outlets
- Custom rocket launcher
- Custom cutting table
- Merritt fighting chair
- Mezzanine seating with a/c
- Side lockers under gunwale
- (2) Baitwells in deck
- On deck plumbing with sump boxes for (2) deck wells
- Rupp hydraulic 4 spreader outriggers with cameras
- (2) Miya Epoch US-9 teaser reels in overhead on bridge
- Ample rod storage under bench seating on bridge

Galley and Laundry Equipment

Main Galley

- Range: Miele 4 burner
- Oven: Miele convection
- Microwave: Sharp convection
- Refrigeration: (2) Sub Zero 2 drawer
- Freezer: Sub Zero 2 drawer
- Ice maker: Kitchenaid
- Wine Cooler: Avanti
- Coffee Maker: Bosch Tassimo

Laundry Equipment

- Main Laundry: Whirlpool washer and dryer

Deck and Hull

- Anchor Windlass System: Muir hydraulic
- Anchor: Suncor 80 lb. stainless
- Anchor Chain & Rode:
- Underwater Lights: (2)

Security Equipment

- Alarm System:
- CCTV System: (2)- in outriggers
- Cameras: (3)-engine room, (2)-pump room
- Ships Safe

Fire Fighting and Safety Equipment

- Smoke Detector: Main salon
- Fixed FM System: Kidde
- Portable: (8) Halotron
- Life Rafts: (2) Givins 6 man
- EPIRBs: ACR

Exclusions

- Owners Personal Items

Exclusions

Owner's personal belongings.

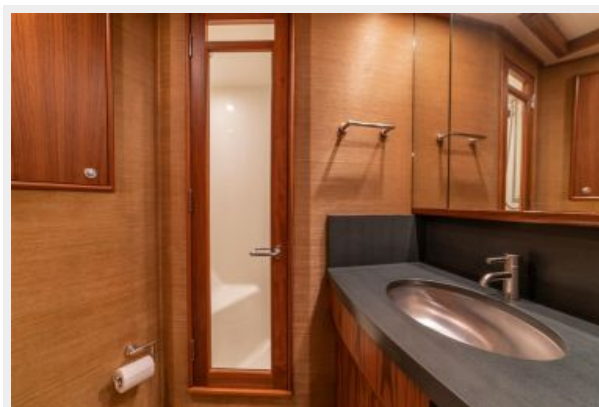
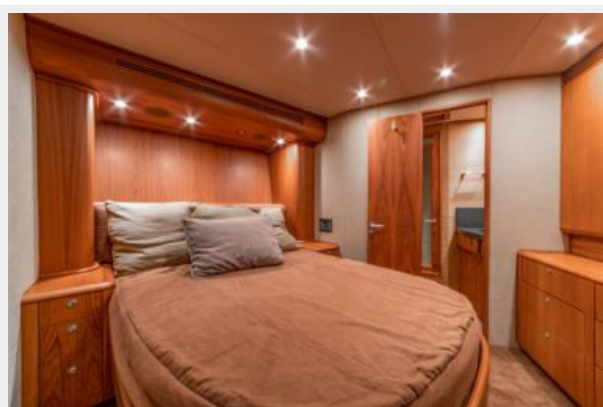
Disclaimer

The Company offers the details of this vessel or yacht in good faith but cannot guarantee or

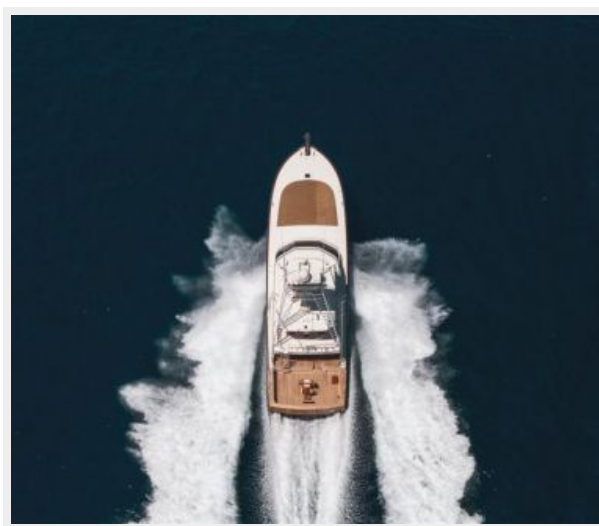
warrant the accuracy of this information nor warrant the condition of the vessel. A buyer should instruct his representatives, agents, or his surveyors, to investigate such details as the buyer desires validated. This vessel or yacht is offered subject to prior sale, price change, or withdrawal without notice.

PHOTOS











CONTACTS

Andrey Shestakov, leading yacht broker of the sales department of Shestakov Yacht Sales Inc. Shestakov Yacht Sales Inc., the official representative of the Miami/Fort Lauderdale FL headquarters.

Contact details

Email: **andrey@shestakovyachtsales.com**

Web: shestakovyachtsales.com/en/

Telephones

USA: **+1(954)274-4435**

Office hours

Monday – Saturday: **9:00 - 21:00 EDT**

Sunday: **closed**

Address



Harbour Towne Marina, 850 NE 3rd St,
STE 213, Dania, FL 33004