

NO NAME AZIMUT — AZIMUT



Судостроитель: [AZIMUT](#)

Год постройки: 2012

Модель: Моторная яхта

Цена: **ЦЕНА ЯХТЫ ПО ЗАПРОСУ**

Местонахождение: United States

Длина общая: 105' 0" (32.00m)

Ширина: 21' 7" (6.58m)

Крейс. скорость: 22 Kts. (25 MPH)

Макс. скорость: 32 Kts. (37 MPH)

Купить No Name Azimut — AZIMUT а также выбрать подходящую вам яхту из нашего каталога яхт вам поможет опытный яхтенный брокер Андрей Шестаков. На сегодняшний день компания Shestakov Yacht Sales Inc. имеет большое количество яхт в собственном списке продаж, а также тесно сотрудничает со всеми крупными яхтенными производителями по всему миру.

Для того чтобы купить яхту No Name Azimut — AZIMUT а также проконсультироваться по любому вопросу связанному с покупкой, продажей, чартером яхт позвоните по телефону **+7(918)465-66-44**.

ОГЛАВЛЕНИЕ

ОГЛАВЛЕНИЕ	2
ХАРАКТЕРИСТИКИ	8
Основная информация	8
Размеры	8
Скорость, вместимость и масса	8
Размещение	8
Корпус и палуба	8
Информация о двигателе	8
ПОДРОБНОЕ ОПИСАНИЕ	9
Vessel Description	9
Main Salon	9
Day Head	9
Galley	9
Dining Salon	10
Master Stateroom	10
Master Head	11
Queen Guest Stateroom, Port Aft	11
Ensuite Bath	11
Queen Guest Stateroom, Starboard Aft	11
Ensuite Head	12
Guest Stateroom, Port Forward	12
Guest Bath	12
Guest Stateroom, Starboard Forward	13
Guest Head, Starboard Forward	13
Crew Quarters, Forward of Galley	13
Pilothouse Electronics	14
Flybridge Electronics	14
Flybridge	15

Aft Deck	15
Deck Equipment, Bow	16
Tender Garage	16
Engine Room, Mechanical Equipment	16
Additional Systems	16
Electrical System	17
Исключения	18
Отказ от ответственности	18
ФОТОГРАФИИ	19
Salon	19
Salon	19
Salon	19
Salon	19
Salon	19
Salon	19
Galley	20
Galley	20
Galley	20
Galley	20
Galley	21
Galley	21
Galley	21
Dining	21
Dining	21
Dining	21
Day Head	22
Laundry	22
Upper Foyer	22
Master Stateroom	22

Master Stateroom	23
Master Stateroom	23
Master Stateroom	23
Master Stateroom	23
Master Stateroom	23
Master Stateroom	23
Master Stateroom	24
Master Head	24
Master Head	24
Master Head	24
Master Head	25
Master Head	25
Port Aft Stateroom	25
Port Aft Stateroom	25
Port Aft Stateroom	26
Port Aft Stateroom	26
Port Aft Head	26
Port Aft Stateroom	26
Port Aft Head	27
Starboard Aft Stateroom	27
Starboard Aft Stateroom	27
Starboard Aft Stateroom	27
Starboard Aft Stateroom	27
Starboard Aft Stateroom	27
Starboard Aft Head	28
Starboard Aft Head	28
Port Forward Stateroom	28
Port Forward Stateroom	28
Port Forward Stateroom	29

Port Forward Stateroom	29
Port Forward Head	29
Port Forward Head	29
Starboard Forward Stateroom	30
Starboard Forward Stateroom	30
Starboard Forward Stateroom	30
Starboard Forward Stateroom	30
Starboard Forward Head	31
Starboard Forward Stateroom	31
Starboard Forward Head	31
Pilothouse	31
Pilothouse	32
Pilothouse	32
Pilothouse	32
Pilothouse	32
Pilothouse	32
Pilothouse	32
Pilothouse	32
Pilothouse	33
Pilothouse	33
Pilothouse	33
Pilothouse	33
Flybridge	34
Flybridge	34
Flybridge	34
Flybridge	34
Flybridge	34
Flybridge	34
Flybridge	35
Flybridge	35

Flybridge	35
Flybridge	35
Flybridge	35
Flybridge	35
Flybridge	36
Flybridge	36
Aft Deck	36
Aft Deck	36
Aft Deck	36
Aft Deck	36
Aft Deck	37
Bow	37
Bow	37
Bow	37
Bow	37
Bow	37
Engine Room	38
Engine Room	38
Engine Room	38
Engine Room	38
Port Passageway	39
Starboard Passageway	39
No Name Azimut	39
Tender	39
No Name Azimut	40
No Name Azimut	40
КОНТАКТЫ	41
Контактная информация	41
Телефоны	41

Время работы	41
Адрес	41

ХАРАКТЕРИСТИКИ

Основная информация

Тип судна: Моторная яхта

Модельный год: 2013

Год постройки: 2012

Страна: United States

Размеры

Длина общая: 105' 0" (32.00m)

Ширина: 21' 7" (6.58m)

Скорость, вместимость и масса

Крейс. скорость: 22 Kts. (25 MPH)

Макс. скорость: 32 Kts. (37 MPH)

Вместимость воды: 600 Gallons

Вместимость сточного бака: 370 Gallons

Объем топливного бака: 4333 Gallons

Размещение

Всего кают: 5

Всего ком. состава: 6

Корпус и палуба

Материал корпуса: Fiberglass

Информация о двигателе

Двигатели: 2

Производитель: MTU

Модель: 16V2000 M93

Тип двигателя: Inboard

Тип топлива: Diesel

ПОДРОБНОЕ ОПИСАНИЕ

Vessel Description

This No Name 105' 2013 Azimut is a yacht of superlatives: incredibly spacious, very private, ultimately stylish and superbly comfortable. Two and a half decks feature on this striking yacht open to the sea and landscape. With superbly designed lines emphasized by large windows and a sleek profile showcased by the raised pilothouse and on deck master.

Not For Sale To U.S. Residents While In U.S. Waters

Main Salon

The exquisite interior of the main salon has an inviting sense of comfort with contemporary beige furnishings, Italian Mogano joinery and large panoramic views.

- Custom Italian Mogano joinery throughout
- Built-in retractable entertainment center with 42" flat screen TV
- Denon surround sound stereo system with Elan iPad integration
- Custom beige contemporary sofas with decorative throw pillows
- Custom Italian Mogano wood/glass cocktail table
- Fluted storage for glassware
- Custom Italian Mogano fluted storage forward
- Custom Italian Mogano fluted shelves/storage, starboard and port
- Citina on forward bulkhead
- Custom wall-to-wall carpeting with full runner
- Oversized windows with custom blinds

Day Head

- Day head located forward of salon through starboard companionway foyer, midship
- Sink/cabinet with mirror
- Storage below vanity
- Granite vanity top
- Marble flooring with wood inlay
- Overhead lighting

Galley

- Accessed through port side entryway from dining salon
- High-gloss cabinetry throughout

- Four-person dinette
- Stainless steel countertops
- Samsung wine chiller
- Frigomar stainless steel refrigerator/freezer side by side
- Miele microwave
- Miele four-burner glass cooktop
- Miele oven
- Stainless steel double sink
- Miele extraction fan
- Exterior pantograph door
- Large storage cabinets next to refrigerator
- Ample storage below cabinets
- Wood galley floor
- Stereo
- LG TV

Dining Salon

The formal dining area is situated forward of the main salon with accessibility to the galley through the portside entryway

- Wood dining table for (8) guests with contemporary leather upholstered chairs
- Service station between port and starboard entryways with fluted storage above and underneath

Master Stateroom

- Located on main deck forward
- On-deck master stateroom accessed through starboard foyer via entryway from dining salon
- Custom king bed with upgraded mattress, storage, and custom leather headboard
- Custom bedspread and shams with decorative accent pillows
- (2) Custom night stands with storage
- Fixed reading lamps on both night stands
- Indirect overhead ceiling lighting
- Indirect lighting behind the bulkhead panel
- Panoramic windows to both port and starboard with silk drapery/blinds
- Drawers and vanity table with mirror and stool to starboard side
- Minibar with Vitrifrigo refrigerator
- Wall to wall carpeting
- Samsung TV
- Denon stereo system with Bose surround speakers
- Sat TV, Apple TV and Western digital harddrive

Master Head

- Accessed via forward ensuite companionway down to lower deck
- Master head with cascading rainfall shower in the middle
- Custom Teuco jacuzzi jet bathtub directly forward of shower
- His and Hers granite inlay sinks/vanities on both sides with Villeroy and Boch sink and faucets
- Tecma toilet and bidet
- Ample custom built-in shelving
- Mirrored vanity with storage
- Overhead lighting
- Port lights for natural lighting

Queen Guest Stateroom, Port Aft

- Double queen sized bed with custom mattress, storage underneath, and custom leather headboard
- Light blue and silver custom bedspread and shams with decorative accent pillows
- (2) Matching night stands with drawer storage
- (2) Fixed overhead reading lights above nightstands
- Large window to portside with blinds
- Built-in desk/vanity
- Custom designed indirect lighting built within ceiling modeling
- Large hanging locker with shelves
- Wall to wall carpeting
- Samsung flat screen TV
- Sat TV with LG DVD player
- Bose surround sound

Ensuite Bath

- Granite countertop with inlay sink and custom chrome Villeroy and Boch sink faucet fixtures
- Large mirrored wall
- Tecma toilet
- Cabinets and custom built-in shelves
- Large shower with Italian Mogano wood paneled sole and cascading rainfall shower
- Port hole window within shower
- Marble flooring with wood inlay
- Storage below vanity

Queen Guest Stateroom, Starboard Aft

- Queen sized bed with custom mattress, storage underneath, and custom leather headboard

- Custom bedspread and shams with decorative accent pillows
- (2) Matching night stands with drawer storage
- (2) Fixed overhead reading lights above nightstands
- Large window to portside with blinds
- Built-in desk/vanity
- Custom designed indirect lighting built within ceiling modeling
- Large hanging locker with shelves below
- Wall to wall carpeting
- Samsung flat screen TV
- Sat TV with LG DVD player
- Bose surround sound

Ensuite Head

- Granite countertop with inlay sink and custom chrome Villeroy and Boch sink faucet fixtures
- Large mirrored wall
- Tecma toilet
- Cabinets and custom built-in shelves
- Large shower with Italian Mogano wood paneled sole and cascading rainfall shower
- Port hole window within shower
- Marble flooring with wood inlay
- Storage below vanity

Guest Stateroom, Port Forward

- (2) Side by side berths with storage underneath, custom leather headboards
- Custom bedspread, shams, and decorative accent pillows
- Night stand with fixed custom reading lamp and storage
- Custom designed indirect lighting built within ceiling modeling
- Indirect lighting behind the bulkhead panel behind the bed
- Hanging locker and shelves
- Wall to wall carpeting
- Samsung TV - Bose surround sound LG DVD player Sat TV
- Porthole window
- Pullman berth inboard to sleep third person

Guest Bath

- Granite countertop with inlay sink and custom chrome fixtures
- Large mirrored wall
- Tecma toilet
- Cabinets and custom built in shelves

- Shower with Italian Mogano wood paneled sole and cascading rainfall shower
- Storage shelves behind head
- Storage below vanity
- Marble floor with wood inlay

Guest Stateroom, Starboard Forward

- Twin side by side berths, storage underneath, and custom leather headboard
- Custom bedspreads and shams with decorative accent pillows
- Night stand with drawer storage and fixed center reading light
- Custom designed indirect lighting built within ceiling modeling
- Large hanging locker and shelves
- Wall to wall carpeting
- Samsung TV
- Sat TV with LG DVD player
- Port hole window with blinds
- Bose surround sound
- Pullman berth for third person

Guest Head, Starboard Forward

- Granite countertop with inlay sink and custom chrome fixtures
- Large mirrored wall
- Tecma toilet
- Cabinets and custom built in shelves
- Shower with Italian Mogano wood paneled sole and cascading rainfall shower
- Marble flooring with wood inlay
- Storage below vanity

Crew Quarters, Forward of Galley

Captain's Cabin

- Queen size berth with drawers below
- Halogen spotlights
- Porthole with curtain
- Hanging locker
- Samsung TV
- Stereo
- Private bath with vanity, sink, and shower

Crew Cabins and Engineer Cabin

- Over/under berths with spreads and shams
- Drawers below lower berth
- Halogen spotlights
- Porthole with curtain
- Crew bath with vanity, sink, shower, and Venetian blinds

Pilothouse Electronics

- Furuno RD30
- Furuno display for radar, GPS, video plotter and echo sounder
- Furuno NavNet GPS/Sounder/Radar
- Simrad GPS/Sounder/Radar
- Furuno autopilot
- MTU control panel
- Side power bow thruster
- Cantalupi control panel
- Video security camera
- Navigation light
- Cruisair A/C panel for pilothouse
- Auto prime ship's alarm system
- Furuno VHF FM-4721
- White Star magnetic compass
- Stereo system
- BCS Steering control panel
- ABT Trac stabilizers control panel
- MTU controls
- Spotlight dual controller
- Rudder indicators
- FLIR night vision
- XM weather
- XM Radio

Flybridge Electronics

- Furuno RD30
- Furuno NavNet unit with display
- MTU Controls/gauges
- BCS Steering system control panel
- Spotlight dual controller
- Side power bow thruster
- Cantalupi safety panel
- Cantalupi controls for trim tabs and windlass
- KEP display Simrad GPS/Plotter/Video/Sounder/FLIR

- Yacht controller
- Simrad OP40 remote control
- ICOM 506 VHF
- Furuno autopilot
- Rudder indicators
- Trim tab indicator

Flybridge

- Wide Plexiglass windscreen
- (2) Retractable sun screens within hardtop
- Helm bench seat with cushions and stainless steel footrest, port
- Large teak table
- Bar with sink, (2) doors for storage, teak and Corian bar top
- Wet bar with refrigerator, icemaker, beverage cooler, sink, storage and Corian working top
- Storage cabinet in fiberglass on starboard side
- L-Shaped dining settee on starboard side with cushions and storage
- Fixed teak table for ten people with (2) stainless steel bases on starboard side
- (3) Teak chaise lounges
- Four-person jacuzzi with teak step
- Shower with nozzle on aft portside and washdown with nozzle
- Navigation lights, antennas, horn, search light on hardtop
- Stainless steel handrails around aft area of the flybridge
- Teak flybridge deck
- Covers for flybridge console, teak tables, sofas and sunbathing cushions
- (2) Life rafts
- Sliding door to pilothouse, centerline
- External staircase accessibility to aft deck

Aft Deck

- Teak table with seating for ten
- Frigomar mini fridge
- (2) Maxwell 3000lb windlass, port and starboard
- (4) Custom mooring bits
- Roller hawse eyes
- JL Audio speakers
- (2) Boarding gates, port and starboard
- Camera
- Stairs leading to swim platform with shower on port side and teak swim step

Deck Equipment, Bow

- (2) Maxwell 6000 YZ windlass
- (2) Large sunpads
- Opacmare boarding passarelle
- (4) Roller haws eyes, port and starboard
- (2) 160 Kg Posidonia anchors in steel
- 100m Steel chains (16mm diameter)
- Built-in stainless steel bow protections
- (10) Cleats in total; (2) on aft, (2), on bow and (1) midship each side
- (2) Pop-up cleats on the open swim platform
- Large fender and rope storage in brow

Tender Garage

- Garage power launch retractable system
- Williams six-person Jet tender 445
- Emergency steering backup
- Underwater lights
- Chest freezer
- Washer/dryer
- Commercial Icemaker
- (2) Sea Recovery watermakers

Engine Room, Mechanical Equipment

- Twin MTU 16V2000 M93 2400HP engines
- Reversing reduction groups: ZF 3060 V, reduction rate 3:1
- Gearbox configuration: V-Drive with universal joint
- Fire station pump
- A-Sea power computer system
- Tides shaft seals
- Hydraulic bow thruster
- Nibral 4-blade propellers
- AISI 316 steel with 40 sq m surface rudders
- AISI 316 steel, 650 mm wide trim tabs
- Hydraulic system bow thruster, 23.8kW (32HP)
- Cruisair MTC 96DC chilled water with (2) 96,000 BTU air conditioning compressors
- Fire suppression system
- Emergency bilge pump system

Additional Systems

Fuel System

- (4) Aluminum tanks - total capacity approximately 4333 gallons. Each tank is provided with copper breather pipe and electric sensor for level monitoring
- Fuel level is visible in wheelhouse and on the main electrical panel in engine room
- Fuel filling operation is carry out on each side of the superstructure
- 24V electro-pump, automatic/manual with 43 gallons/hours to transfer fuel
- Pump controls on electrical panels and pilothouse
- Emergency manual pump
- Double separating Racor filters for pipe connecting engine room tank and main engines/generators
- Single Racor filters on the gen set
- Reverso fuel polishing system

Black Water System

- WC Discharge are piped, under pressure, into black water tanks with 370 gallon capacity
- Black water tanks can discharge either outboard or ashore, automatic/manual electric 24V pump

Fresh Water System

- (2) Sea Recovery watermakers
- System fed both by structural tank with capacity of 660 gallons and shore connection aft
- (2) Hot water heaters; 40 gallons and 26 gallons
- Tecma WC flushing system
- 24V & 220V Fresh water pump

Electrical System

- Kohler 50KW generators with sound shields, 1500RPM with 4300 hours (Port)
- Kohler 45KW generator with sound shield, 1500RPM with 3600 hours (Stbd)
- Emergency 24V Batteries
- Service 24V gel batteries
- (2) Groups of 24V batteries (2 X 240Ah) for main engines starter
- 24V Leaded batteries of 140Ah for MTU electronics
- (2) Groups of 12V leaded batteries (2 X 135Ah) for generators starter
- 25A Automatic Mastervolt battery charger for emergency batteries
- 100A Automatic Mastervolt battery charger for service batteries
- 25A Automatic Mastervolt battery charger for MTU electronics batteries
- 25A Automatic Mastervolt battery charger for generators batteries
- The electrical system has been carried out according to IEC and CEI
- Electrical wiring are housed in self-extinguishing closed PVC conduits
- Electrical wiring have anti-flame materials with proper size section related to the use

- Principal electric control panels are engine room and technical area under the wheelhouse
- Secondary and local electrical panels are placed in each area
- All equipment has ground junction with adequate cords and braiding of copper with proper section
- (2) 100 Amp shore cords
- (2) 380V/220V/ A/Sea Power transformers

Исключения

При продаже яхты исключаются личные вещи владельца.

Отказ от ответственности

Компания предоставляет описание судна или яхты добросовестно, но не может гарантировать точность этой информации, а также не ручается за техническое состояние. Покупатель должен проинструктировать своих агентов или оценщиков исследовать представленную информацию более подробно, по собственному желанию. Продажа судна или яхты, изменение цены или снятие с продажи будет происходить без предварительного уведомления.

ФОТОГРАФИИ

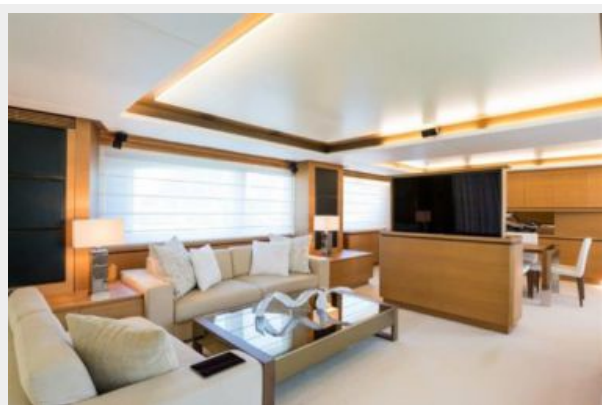
Salon



Salon



Salon



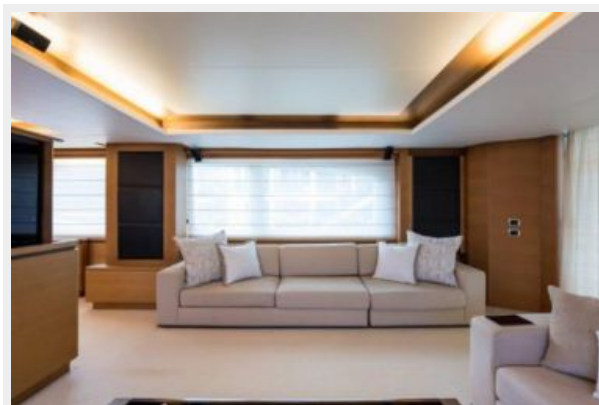
Salon



Salon



Salon



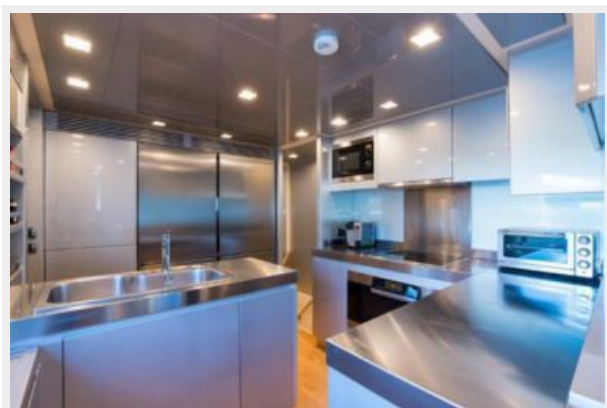
Galley



Galley



Galley



Galley



Galley



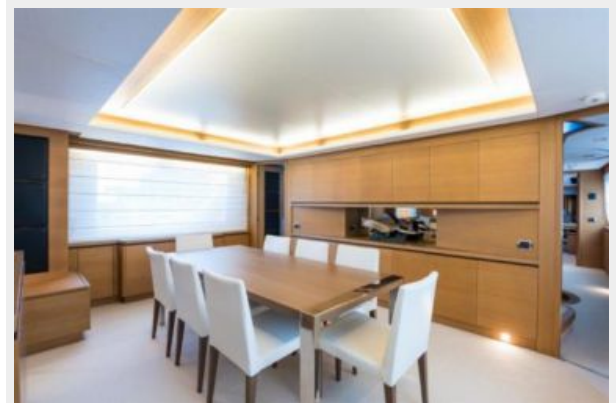
Galley



Galley



Dining



Dining



Dining



Day Head



Laundry



Upper Foyer



Master Stateroom



Master Stateroom



Master Stateroom



Master Stateroom



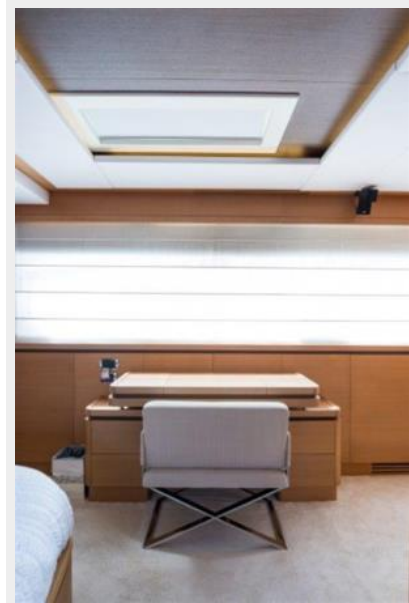
Master Stateroom



Master Stateroom



Master Stateroom



Master Stateroom



Master Head



Master Head



Master Head



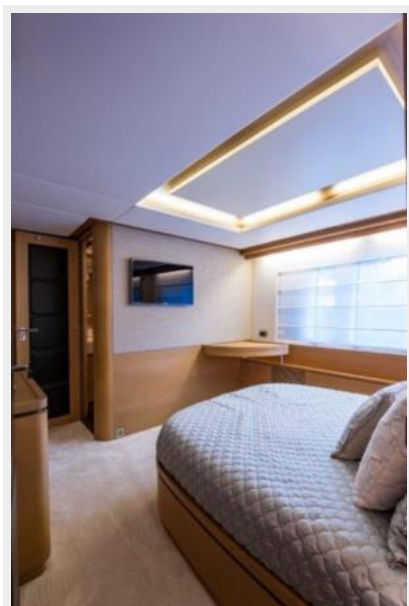
Master Head



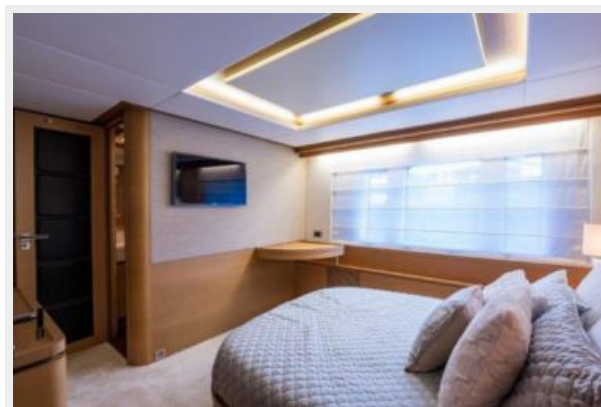
Master Head



Port Aft Stateroom



Port Aft Stateroom



Port Aft Stateroom



Port Aft Stateroom



Port Aft Stateroom



Port Aft Head



Port Aft Head



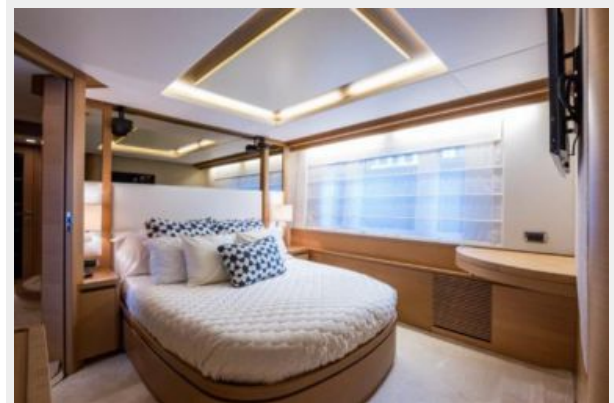
Starboard Aft Stateroom



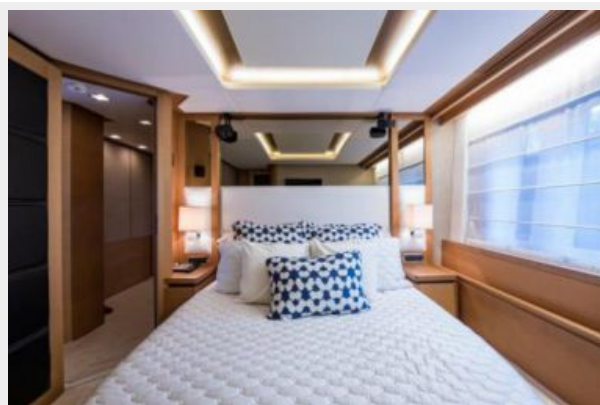
Starboard Aft Stateroom



Starboard Aft Stateroom



Starboard Aft Stateroom



Starboard Aft Stateroom



Starboard Aft Head



Starboard Aft Head



Port Forward Stateroom



Port Forward Stateroom



Port Forward Stateroom



Port Forward Stateroom



Port Forward Head



Port Forward Head



Starboard Forward Stateroom



Starboard Forward Stateroom



Starboard Forward Stateroom



Starboard Forward Stateroom



Starboard Forward Stateroom



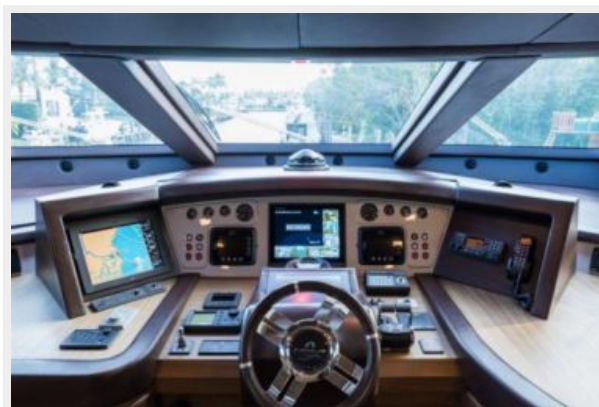
Starboard Forward Head



Starboard Forward Head



Pilothouse



Pilothouse



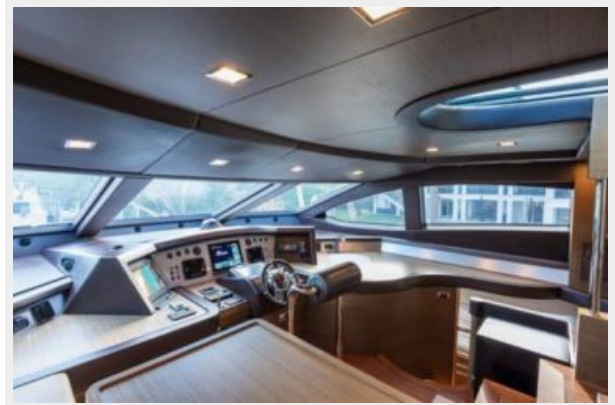
Pilothouse



Pilothouse



Pilothouse



Pilothouse



Pilothouse



Pilothouse



Pilothouse



Pilothouse



Pilothouse



Flybridge



Flybridge



Flybridge



Flybridge



Flybridge



Flybridge



Flybridge



Flybridge



Flybridge



Flybridge



Flybridge



Flybridge



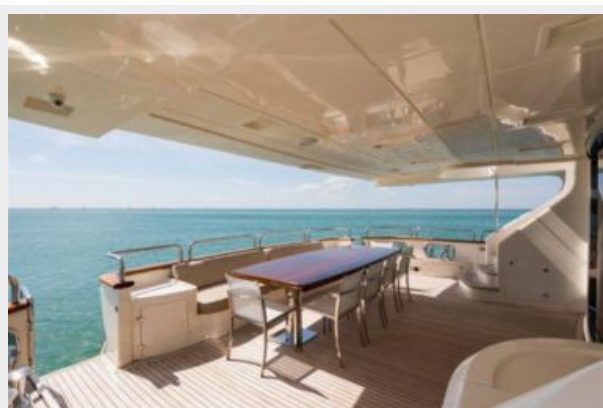
Flybridge



Flybridge



Aft Deck



Aft Deck



Aft Deck



Aft Deck



Aft Deck



Bow



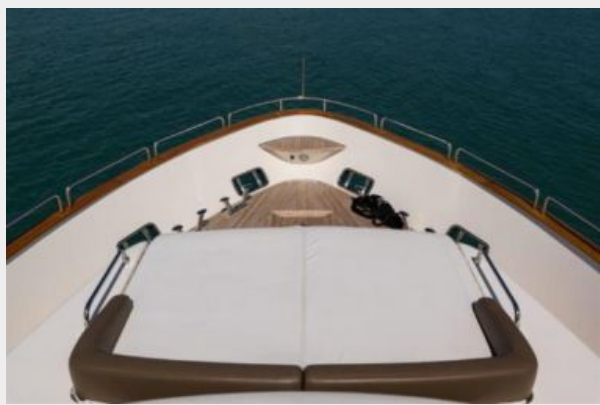
Bow



Bow



Bow



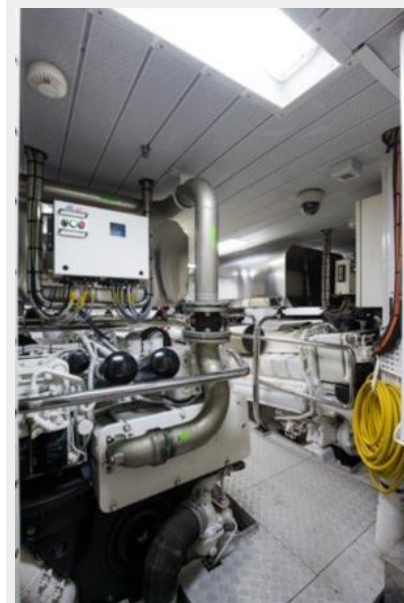
Bow



Engine Room



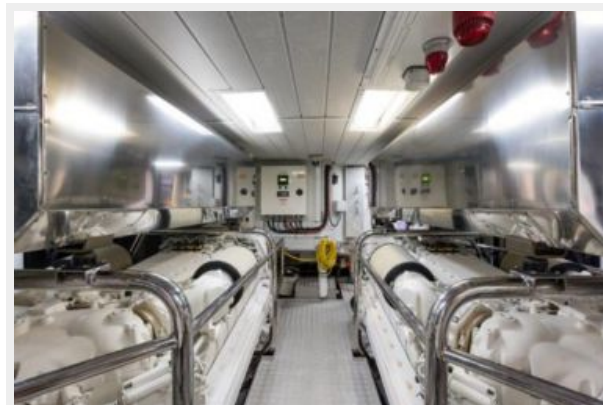
Engine Room



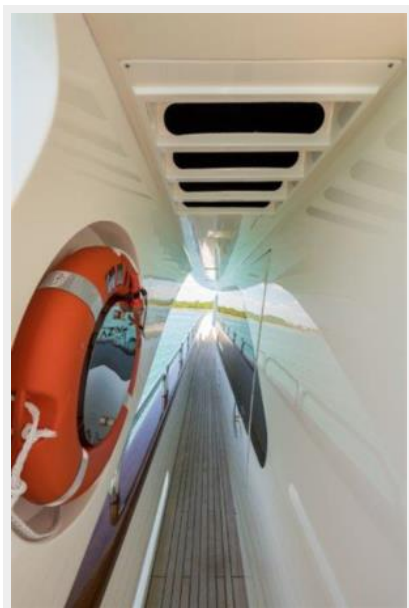
Engine Room



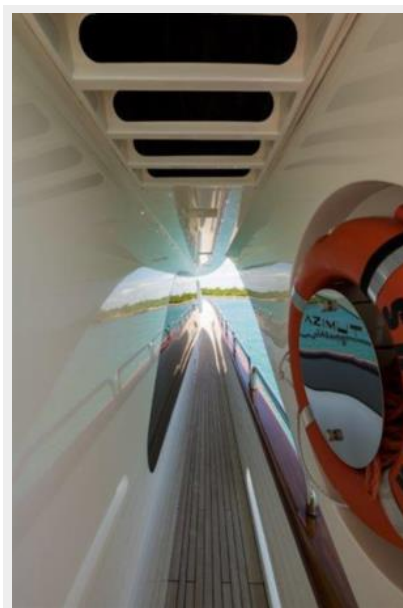
Engine Room



Port Passageway



Starboard Passageway



Tender



No Name Azimut



No Name Azimut



No Name Azimut



КОНТАКТЫ

Андрей Шестаков (Andrey Shestakov) – ведущий яхтенный брокер отдела продаж яхт и судов компании Shestakov Yacht Sales Inc. Официальный представитель Shestakov Yacht Sales Inc. для русскоговорящих клиентов в центральном офисе компании в Майами/Форт Лодердейл/Флорида/США.

Контактная информация

Email: andrey@shestakovyachtsales.com

Web: shestakovyachtsales.com

Телефоны

Краснодарский край: **+7(918)465-66-44**

США, Майами, Флорида: **+1(954)274-4435**

Время работы

Понедельник – Суббота: **9:00 - 21:00**
EDT

Воскресенье: **Закрето**

Адрес



Harbour Towne Marina, 850 NE 3rd St,
STE 213, Dania, FL 33004