

FORR FUN — CATALINA



Судостроитель: CATALINA

Год постройки: 2003

Модель: Крейсерская яхта

Цена: ЦЕНА ЯХТЫ ПО ЗАПРОСУ

Местонахождение: United States

Длина общая: 35' 0" (10.67m)

Ширина: 13' 0" (3.96m)

Макс. осадка: 4' 6" (1.37m)

Купить **Forr Fun — CATALINA** а также выбрать подходящую вам яхту из нашего каталога яхт вам поможет опытный яхтенный брокер Андрей Шестаков. На сегодняшний день компания **Shestakov Yacht Sales Inc.** имеет большое количество яхт в собственном списке продаж, а также тесно сотрудничает со всеми крупными яхтенными производителями по всему миру.

Для того чтобы купить яхту **Forr Fun — CATALINA** а также проконсультироваться по любому вопросу связанному с покупкой, продажей, чартером яхт позвоните по телефону **+7(918)465-66-44**.

ОГЛАВЛЕНИЕ

ОГЛАВЛЕНИЕ	2
ХАРАКТЕРИСТИКИ	5
Обзор	5
Основная информация	5
Размеры	6
Скорость, вместимость и масса	6
Размещение	6
Корпус и палуба	6
Информация о двигателе	6
ПОДРОБНОЕ ОПИСАНИЕ	7
Information	7
Исключения	8
Отказ от ответственности	8
ФОТОГРАФИИ	10
Port Aft View	10
Port Side View	10
Manufacturer Provided Image	10
Step-Thru Transom	10
Two Anchors on Bow	10
Roller Furling Jib	10
View Aft From Bow	11
Anchor Windlass	11
Radar and TV Antenna on Mast	11
Mast Furled Main Sail	11
Main Sheet Traveler in Front of Dodger	12
Solar Panels Above Bimini	12
View of Helm	12
Dinghy Davits	12

Navigation Instruments at Helm	12
Speed/Depth/Wind/Autopilot Displays	12
Engine Instruments	13
Compass	13
VHF Mic at Helm	13
Catalina's Great Rail Seats	13
Newly Re-covered Cockpit Cushions	13
Life Ring/Life Sling	13
Transom Boarding Ladder - Helm Seat Out	14
Cockpit Table	14
Cockpit Table w/ Wings Out	14
All Lines Lead to Cockpit	14
Line Keeper Bags for All Lines	14
All Winches Are Self-Tailing	14
Steps into Salon/Engine Cover	15
View Looking into Companionway	15
View of Very Clean Salon	15
Dinette Table/Nav Station	15
Salon Port Seating	15
Salon Starboard Seating	15
Starboard Salon Seating	16
Double Sink	16
Microwave Oven	16
Propane Stove and Oven	16
Top and Side Access Refrigerator	16
Air Conditioning Controls	16
Battery/Power Tenders	16
Hand-held VHF Radio	17
DVD and Stereo Units	17

Solar Power and Inverter Controllers	17
Primary VHF Radio	17
Solar Power and Inverter Controllers	17
Primary VHF Radio	17
Salon Shelving Starboard	18
Salon LCD TV	18
Salon Shelving Port	18
Ships Bell	18
Starboard Storage Locker in Forward Cabin	18
Forward Berth	18
Forward Cabin View	19
Port Storage Locker in Forward Cabin	19
Aft Cabin Storage Lockers	19
Aft Cabin with Mattress Out	19
View of Aft Berth without Mattress	19
Shelf for Storage in Aft Cabin	19
Door Closed to Forward Cabin	20
Head	20
Head Sink	20
Full Standing Shower with Door	20
Universal 35 Diesel Engine	21
Easy Access to Water Manifold in Floor	21
Easy Engine Access	21
КОНТАКТЫ	22
Контактная информация	22
Телефоны	22
Время работы	22
Адрес	22

ХАРАКТЕРИСТИКИ

Обзор

******* Owner Motivated - Price Reduced - Great Value *******

This Catalina 350 is the perfect cruiser for gunk holing thru the Florida Keys or exploring anywhere in the Caribbean. Very comfortable and seaworthy, the boat has been equipped with Solar Panels, an Inverter and Genset so that you need not worry about having not enough power when you are cruising. This is one well equipped and roomy sailor. The boat is in very good condition and completely ready for her next trip.

Air Conditioning and Generator makes this boat a pleasure to be on during the summer.

(For those of you who are Bond fans, the hull number is 007)

Here is what Catalina had to say about the 350.....

"The Catalina 350 features deep coamings and seats long enough for sleeping highlight the cockpit. Wide weather decks and inboard shrouds make for secure passages. A divided anchor locker has double rollers and electric windlass. Sail controls are led aft on the cabin top to large winches. The powerful, yet easily managed rig includes ball-bearing blocks and in mast furling. The versatile accommodations include settees that will serve as sea berths. Private cabins, separate stall shower, generous tankage, large battery banks and big lockers give the 350 the capacity for comfortable cruising."

Основная информация

Тип судна: Крейсерская яхта

Модельный год: 2003

Год постройки: 2003

Страна: United States

Размеры

Длина общая: 35' 0" (10.67m)

Длина по ватерлинии: 31' 3" (9.53m)

Ширина: 13' 0" (3.96m)

Макс. осадка: 4' 6" (1.37m)

Трапы: 52' 0" (15.85m)

Скорость, вместимость и масса

Водоизмещение: 14012 Pounds

Вместимость воды: 89 Gallons

Вместимость сточного бака: 24 Gallons

Объем топливного бака: 39 Gallons

Размещение

Всего кают: 2

Всего коек: 4

Всего ком. состава: 1

Корпус и палуба

Материал корпуса: Fiberglass

Отделка корпуса: Plastic

Дизайнер корпуса: Gerry Douglas

Информация о двигателе

Двигатели: 1

Производитель: Universal

Модель: M35B

Тип двигателя: Inboard

Тип топлива: Diesel

ПОДРОБНОЕ ОПИСАНИЕ

Information

Accommodations

The owner's cabin is forward, with private access to the head with stall shower. The main cabin is large and well ventilated, and can be set for dining with a large table or the cocktail table as in the pictures. There is a comfortable second cabin aft with large hanging locker and storage. Both the owner's cabin and aft stateroom have new mattresses.

Galley

The galley has solid surface counter tops, great storage and stainless steel double sink, stove, oven and refrigerator door. It is out of the traffic flow, yet convenient to the cockpit...

- Hillerange 2 burner Stove with oven
- Adler Barbour refrigeration
- Hot water heater, 110 and heat exchanger
- Dual Access Refrigerator/Freezer
- Double Stainless Sink

Electronics

- Raymarine RL70C Chartplotter/24 mile Radar
- New Raymarine EVO P70 series Smart Pilot Autopilot
- Raymarine ST 60+ Speed, Depth and Wind instruments
- Standard Horizon VHF with AIS receiver
- Standard Horizon Remote Mic mounted at helm
- Stereo
- LCD Television

Electrical and Mechanical

- 2 House batteries and separate engine start battery
- 30 Amp Automatic Battery Charger
- Battery Monitor
- 400 watt inverter
- Electric Macerating Head
- 11 gallon Water Heater, 110 volt and heat exchanger
- Air conditioner, 16,500 BTU
- Phasor 3.5kw Genset

- Tank Monitor for water and holding

Sails and Rigging

- **In Mast Furling**, Charleston Spar
- Schaefer Roller furling with 135% Genoa
- Extra halyard for spinnaker
- Four Harken Self-Tailing winches, Primary B44.2 STC. Halyard B32.2 STC
- Garhauer Rigid Boom Stainless Steel Vang
- Double Spreaders
- Total Sail Area: 731.00 sq ft I : 46.75 ft J : 14.42 ft P : 40.92 ft E : 13.50 ft

Engine and controls

- Universal M35B, 35 HP, 4 cyl. Freshwater cooled Diesel
- Approx. fuel consumption 1.2 GPH @2500 RPM
- Steering wheel leather cover still in original box.
- Single lever control

Deck

- Bimini, Dodger with connector
- Cockpit cushions in new condition
- Bruce anchor with 50 ft of 5/16" chain plus rode
- Spade anchor with 200 ft chain
- Danforth secondary anchor with chain and rode
- Maxwell electric windlass
- Hatch covers

Исключения

При продаже яхты исключаются личные вещи владельца.

Отказ от ответственности

Компания предоставляет описание судна или яхты добросовестно, но не может гарантировать точность этой информации, а также не ручается за техническое состояние. Покупатель должен проинструктировать своих агентов или оценщиков исследовать представленную информацию более подробно, по собственному желанию. Продажа судна или яхты, изменение цены или снятие с продажи будет происходить без

предварительного уведомления.

ФОТОГРАФИИ

Port Aft View



Port Side View



Step-Thru Transom



Manufacturer Provided Image



Two Anchors on Bow



Roller Furling Jib



Anchor Windlass



View Aft From Bow



Radar and TV Antenna on Mast



Mast Furled Main Sail



Main Sheet Traveler in Front of Dodger



Solar Panels Above Bimini



Dinghy Davits



View of Helm



Navigation Instruments at Helm



Speed/Depth/Wind/Autopilot Displays



Engine Instruments



Compass



VHF Mic at Helm



Catalina's Great Rail Seats



Newly Re-covered Cockpit Cushions



Life Ring/Life Sling



Transom Boarding Ladder - Helm Seat Out



Cockpit Table



Cockpit Table w/ Wings Out



All Lines Lead to Cockpit



Line Keeper Bags for All Lines



All Winches Are Self-Tailing



Steps into Salon/Engine Cover



View Looking into Companionway



View of Very Clean Salon



Dinette Table/Nav Station



Salon Port Seating



Salon Starboard Seating



Starboard Salon Seating



Double Sink



Microwave Oven



Propane Stove and Oven



Top and Side Access Refrigerator



Air Conditioning Controls



Battery/Power Tenders



Hand-held VHF Radio



DVD and Stereo Units



Solar Power and Inverter Controllers



Primary VHF Radio



Solar Power and Inverter Controllers



Primary VHF Radio



Salon Shelving Starboard



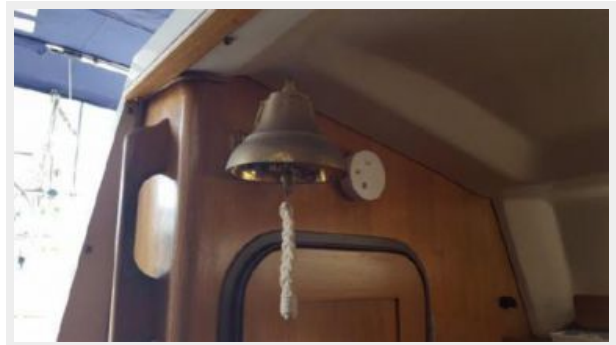
Salon LCD TV



Salon Shelving Port



Ships Bell



Starboard Storage Locker in Forward Cabin



Forward Berth



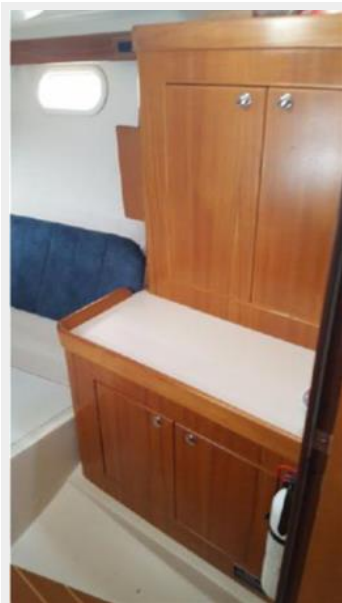
Forward Cabin View



Port Storage Locker in Forward Cabin



Aft Cabin Storage Lockers



Aft Cabin with Mattress Out



View of Aft Berth without Mattress



Shelf for Storage in Aft Cabin



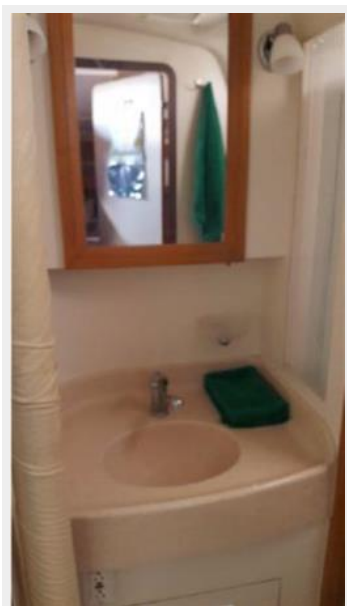
Door Closed to Forward Cabin



Head



Head Sink



Full Standing Shower with Door



Universal 35 Diesel Engine

Easy Access to Water Manifold in Floor



Easy Engine Access



КОНТАКТЫ

Андрей Шестаков (Andrey Shestakov) – ведущий яхтенный брокер отдела продаж яхт и судов компании Shestakov Yacht Sales Inc. Официальный представитель Shestakov Yacht Sales Inc. для русскоговорящих клиентов в центральном офисе компании в Майами/Форт Лодердейл/Флорида/США.

Контактная информация

Email: andrey@shestakovyachtsales.com

Web: shestakovyachtsales.com

Телефоны

Краснодарский край: **+7(918)465-66-44**

США, Майами, Флорида: **+1(954)274-4435**

Время работы

Понедельник – Суббота: **9:00 - 21:00**
EDT

Воскресенье: **Закрито**

Адрес



Harbour Towne Marina, 850 NE 3rd St,
STE 213, Dania, FL 33004