

## 35 2001 TIARA 3500 OPEN — TIARA



**Builder:** TIARA

**LOA:** 35' 0" (10.67m)

**Year Built:** 2001

**Beam:** 13' 3" (4.04m)

**Model:** Cruiser

**Max Draft:** 3' 4" (1.02m)

**Price:** PRICE ON APPLICATION

**Location:** United States

Our experienced yacht broker, Andrey Shestakov, will help you choose and buy a yacht that best suits your needs **35 2001 Tiara 3500 Open — TIARA** from our catalogue. Presently, at **Shestakov Yacht Sales Inc.**, we have a wide variety of yachts available on our sale's list. We also work in close contact with all the big yacht manufacturers from all over the world.

If you would like to buy a yacht **35 2001 Tiara 3500 Open — TIARA** or would like help answering any questions concerning purchasing, selling or chartering a yacht, please call **+1(954)274-4435**

# TABLE OF CONTENTS

TABLE OF CONTENTS	2
SPECIFICATIONS	3
Overview	3
Basic Information	3
Dimensions	3
Speed, Capacities and Weight	3
Accommodations	3
Hull and Deck Information	3
Engine Information	4
DETAILED INFORMATION	5
Information	5
Exclusions	6
Disclaimer	6
PHOTOS	7
CONTACTS	16
Contact details	16
Telephones	16
Office hours	16
Address	16

# SPECIFICATIONS

## Overview

Just on the market. N ice straight piece. Nice and clean. 1200 hours on Cummins. 1000 service has been done. She has all the Tiara options. Should not last long in this market.

## Basic Information

**Category:** Cruiser

**Sub Category:** Express

**Model Year:** 2001

**Year Built:** 2001

**Country:** United States

## Dimensions

**LOA:** 35' 0" (10.67m)

**LWL:** 31' 7" (9.63m)

**LOD:** 40' 8" (12.40m)

**Beam:** 13' 3" (4.04m)

**Max Draft:** 3' 4" (1.02m)

## Speed, Capacities and Weight

**Displacement:** 14000 Pounds

**Water Capacity:** 70 Gallons

**Holding Tank:** 30 Gallons

**Fuel Capacity:** 360 Gallons

## Accommodations

**Total Cabins:** 1

**Total Heads:** 1

## Hull and Deck Information

**Hull Material:** Fiberglass

**Hull Configuration:** Modified V-Hull

## Engine Information

---

**Engines:** 2

**Manufacturer:** Cummins

**Model:** 5.9

**Engine Type:** Inboard

**Fuel Type:** Diesel

---

# DETAILED INFORMATION

---

## Information

---

**Manufacturer Provided Description** The 3500 Open the next generation of Tiara Yachts. Reflecting its obvious Tiara heritage, the 3500 is a completely new yacht. The profile is enhanced by a unique curved reverse transom, with molded transom door and gate, and integrated swim platform and bow pulpit. Cockpit seating includes a double-wide back-to-back helm seat, as well as back-to-back companion seats. An optional aft lounge seat is also available. Below deck, the interior is large and comfortable, with headroom that is 6'6" in the salon, and 6'4" at the foot of the queen-sized pedestal berth in the owner's stateroom. The salon includes a starboard 7'4" lounge - convertible to a dinette - and/or a double berth (the lounge backrest also flips up to make a pullman-style berth. Opposite the lounge is an ample galley, and a spacious molded fiberglass shower/head.

**Additional Description** Some commonly chosen Options include: Cruising Radar Antenna Arch / Generator / Automatic Windlass / Glendinning Engine Synchronizer / Honey Ash Interior / Teak and Holly Cabin Sole. A Hardtop Option is also available on the 3500 Open which features recessed lighting and stereo speakers.

**Additional Description** The cockpit on the 3500 Open is comfortable and spacious, and provides plenty of seating options. The helm seat is wide and comfortable, with an aft wet bar with either storage, or an optional ice maker, and an aft-facing seat. The helm itself is the standard Tiara "heads up" fiberglass tilt-away station, with full flush mount electronics capability. To port is an all fiberglass companion door shroud with molded-in navigation chart area and drink holders. The companionway door is an acrylic sliding door with lock and convenient built-in screen. The helm is to starboard with a "heads up" fiberglass tilt away helm station with full flush mount electronics capabilities. The companion seating arrangement features a standard back-to-back configuration with storage and insulated cooler. An optional curved lounge, also with storage and cooler, can replace the back-to-back if desired. The lower cockpit is spacious and an optional transom lounge is also available. lounge with storage can be opted for.

**Additional Description** The cabin on the 3500 Open can sleep 5 and features a queen-sized pedestal berth forward with hanging locker and plenty of storage. The large U-shaped lounge is convertible to a dinette, and to a double berth ... and a pullman berth can be raised to provide space for the fifth person aboard. The galley is to the port side and features a Corian countertop, S.S. sink, recessed cooktop, microwave/convection oven, and Subzero refrigerator/freezer. Storage is plentiful. An optional TV/ VCR combination can be placed above the microwave for easy viewing from the dinette. The all fiberglass head features Corian countertop, sink with storage below, mirrored vanity, exhaust fan.

**Additional Description** The electrical system on the 3500 Open features a custom 12V and 120V master distribution panel with Plexiglas door, amp meter, reverse polarity indicator, one 30 amp 50' shore power cord with adapter, a two bank 12V battery system with gel cell batteries, and battery charger.

**Additional Description** An array of safety equipment is standard, including: Cockpit lighting, automatic bilge pumps, hand-held fire extinguishers, Coast Guard safety and medical kit, and the certification from the NMMA, U.S.C.G., and CE (European.)

**Additional Description** Standard engines are twin inboard 8.1 MPI Crusader engines that produce 385 h.p. each. These engines provide the 3500 Open with an optimum cruise speed of 25.2 mph and an estimated range of 269 statute miles. Cummins 6BTA 5.9-M3 diesels are also available, which will help increase the range for long distance cruises. Standard mechanical features include teleflex steering system with 20" S.S. destroyer wheel, bronze axe head rudders and struts, fresh water cooling, engine room acoustical insulation, and electric dual engine hatch lifters.

**Additional Description** The 3500 Open features a transferable 5 year limited warranty on the hull. It is constructed with a water barrier outer gelcoat layer and hand-laid fiberglass with a special formulated resin. Wood and foam core stringers are vacuum sealed and encapsulated with handlaid fiberglass and integrated into the hull. Seacocks and all underwater thru-hull fittings are made of bronze, and a hullside exhaust system is used. The 3500 has six custom oval opening port lights with screens for great ventilation and natural light while below deck. The 3500 also has hullside ventilation and gelcoated boot line graphics.

**Additional Description** The 3500 Open deck also has a transferable 5 year limited warranty and is also constructed with a water barrier outer gelcoat and handlaid fiberglass. Tiara's custom diamond pattern non-skid is used on all deck and cockpit surfaces for sure, safe footing. The windshield is custom Tiara, made of welded aluminum and Solex 1/4" safety glass, and has handrails, and a center ventilation section with power actuator. Grab rails and a sturdy one-piece welded bow rail assist movement forward. The 3500 Open also has three aluminum deck hatches with screens and privacy covers, flush forward anchor locker with overboard drain, and a fiberglass molded-in bow pulpit with standard S.S. roller assembly. An optional windlass is available - the wiring is standard if one wishes to add this at a later time.

**Engine Notes** Top speed of boat: 37.2mph

---

## Exclusions

Owner's personal belongings.

---

## Disclaimer

The Company offers the details of this vessel or yacht in good faith but cannot guarantee or warrant the accuracy of this information nor warrant the condition of the vessel. A buyer should instruct his representatives, agents, or his surveyors, to investigate such details as the buyer desires validated. This vessel or yacht is offered subject to prior sale, price change, or withdrawal without notice.

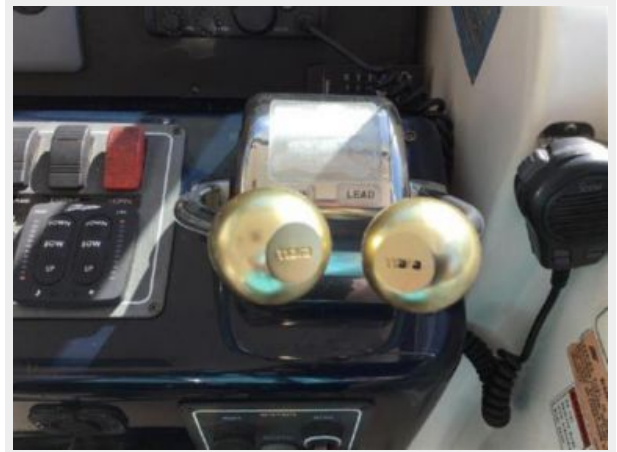
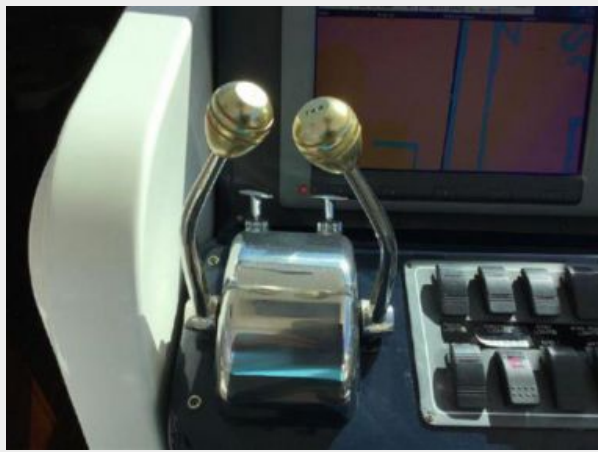
# PHOTOS













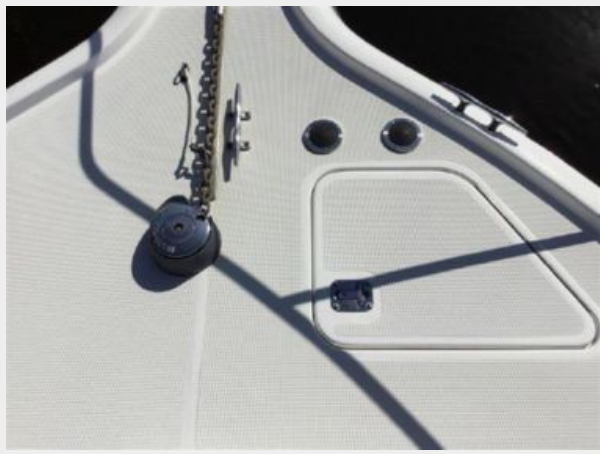
















# CONTACTS

---

Andrey Shestakov, leading yacht broker of the sales department of Shestakov Yacht Sales Inc. Shestakov Yacht Sales Inc., the official representative of the Miami/Fort Lauderdale FL headquarters.

## Contact details

---

Email:  
**andrey@shestakovyachtsales.com**

Web: [shestakovyachtsales.com/en/](http://shestakovyachtsales.com/en/)

## Telephones

---

USA: **+1(954)274-4435**

## Office hours

---

Monday – Saturday: **9:00 - 21:00 EDT**

Sunday: **closed**

## Address

---



Harbour Towne Marina, 850 NE 3rd St,  
STE 213, Dania, FL 33004