

35 2001 TIARA 3500 OPEN — TIARA



Судостроитель: TIARA

Год постройки: 2001

Модель: Крейсер

Цена: **ЦЕНА ЯХТЫ ПО ЗАПРОСУ**

Местонахождение: United States

Длина общая: 35' 0" (10.67m)

Ширина: 13' 3" (4.04m)

Макс. осадка: 3' 4" (1.02m)

Купить 35 2001 Tiara 3500 Open — TIARA а также выбрать подходящую вам яхту из нашего каталога яхт вам поможет опытный яхтенный брокер Андрей Шестаков. На сегодняшний день компания Shestakov Yacht Sales Inc. имеет большое количество яхт в собственном списке продаж, а также тесно сотрудничает со всеми крупными яхтенными производителями по всему миру.

Для того чтобы купить яхту 35 2001 Tiara 3500 Open — TIARA а также проконсультироваться по любому вопросу связанному с покупкой, продажей, чартером яхт позвоните по телефону **+7(918)465-66-44**.

ОГЛАВЛЕНИЕ

ОГЛАВЛЕНИЕ	2
ХАРАКТЕРИСТИКИ	3
Обзор	3
Основная информация	3
Размеры	3
Скорость, вместимость и масса	3
Размещение	3
Корпус и палуба	3
Информация о двигателе	4
ПОДРОБНОЕ ОПИСАНИЕ	5
Information	5
Исключения	6
Отказ от ответственности	6
ФОТОГРАФИИ	7
КОНТАКТЫ	16
Контактная информация	16
Телефоны	16
Время работы	16
Адрес	16

ХАРАКТЕРИСТИКИ

Обзор

Just on the market. N ice straight piece. Nice and clean. 1200 hours on Cummins. 1000 service has been done. She has all the Tiara options. Should not last long in this market.

Основная информация

Тип судна: Крейсер

Подкатегория: Express

Модельный год: 2001

Год постройки: 2001

Страна: United States

Размеры

Длина общая: 35' 0" (10.67m)

Длина по ватерлинии: 31' 7" (9.63m)

Длина палубы: 40' 8" (12.40m)

Ширина: 13' 3" (4.04m)

Макс. осадка: 3' 4" (1.02m)

Скорость, вместимость и масса

Водоизмещение: 14000 Pounds

Вместимость воды: 70 Gallons

Вместимость сточного бака: 30 Gallons

Объем топливного бака: 360 Gallons

Размещение

Всего кают: 1

Всего ком. состава: 1

Корпус и палуба

Материал корпуса: Fiberglass

Комплектация корпуса: Modified V-Hull

Информация о двигателе

Двигатели: 2

Производитель: Cummins

Модель: 5.9

Тип двигателя: Inboard

Тип топлива: Diesel

ПОДРОБНОЕ ОПИСАНИЕ

Information

Manufacturer Provided Description The 3500 Open the next generation of Tiara Yachts. Reflecting its obvious Tiara heritage, the 3500 is a completely new yacht. The profile is enhanced by a unique curved reverse transom, with molded transom door and gate, and integrated swim platform and bow pulpit. Cockpit seating includes a double-wide back-to-back helm seat, as well as back-to-back companion seats. An optional aft lounge seat is also available. Below deck, the interior is large and comfortable, with headroom that is 6'6" in the salon, and 6'4" at the foot of the queen-sized pedestal berth in the owner's stateroom. The salon includes a starboard 7'4" lounge - convertible to a dinette - and/or a double berth (the lounge backrest also flips up to make a pullman-style berth. Opposite the lounge is an ample galley, and a spacious molded fiberglass shower/head.

Additional Description Some commonly chosen Options include: Cruising Radar Antenna Arch / Generator / Automatic Windlass / Glendinning Engine Synchronizer / Honey Ash Interior / Teak and Holly Cabin Sole. A Hardtop Option is also available on the 3500 Open which features recessed lighting and stereo speakers.

Additional Description The cockpit on the 3500 Open is comfortable and spacious, and provides plenty of seating options. The helm seat is wide and comfortable, with an aft wet bar with either storage, or an optional ice maker, and an aft-facing seat. The helm itself is the standard Tiara "heads up" fiberglass tilt-away station, with full flush mount electronics capability. To port is an all fiberglass companion door shroud with molded-in navigation chart area and drink holders. The companionway door is an acrylic sliding door with lock and convenient built-in screen. The helm is to starboard with a "heads up" fiberglass tilt away helm station with full flush mount electronics capabilities. The companion seating arrangement features a standard back-to-back configuration with storage and insulated cooler. An optional curved lounge, also with storage and cooler, can replace the back-to-back if desired. The lower cockpit is spacious and an optional transom lounge is also available. lounge with storage can be opted for.

Additional Description The cabin on the 3500 Open can sleep 5 and features a queen-sized pedestal berth forward with hanging locker and plenty of storage. The large U-shaped lounge is convertible to a dinette, and to a double berth ... and a pullman berth can be raised to provide space for the fifth person aboard. The galley is to the port side and features a Corian countertop, S.S. sink, recessed cooktop, microwave/convection oven, and Subzero refrigerator/freezer. Storage is plentiful. An optional TV/ VCR combination can be placed above the microwave for easy viewing from the dinette. The all fiberglass head features Corian countertop, sink with storage below, mirrored vanity, exhaust fan.

Additional Description The electrical system on the 3500 Open features a custom 12V and 120V master distribution panel with Plexiglas door, amp meter, reverse polarity indicator, one 30 amp 50' shore power cord with adapter, a two bank 12V battery system with gel cell batteries, and battery charger.

Additional Description An array of safety equipment is standard, including: Cockpit lighting, automatic bilge pumps, hand-held fire extinguishers, Coast Guard safety and medical kit, and the certification from the NMMA, U.S.C.G., and CE (European.)

Additional Description Standard engines are twin inboard 8.1 MPI Crusader engines that produce 385 h.p. each. These engines provide the 3500 Open with an optimum cruise speed of 25.2 mph and an estimated range of 269 statute miles. Cummins 6BTA 5.9-M3 diesels are also available, which will help increase the range for long distance cruises. Standard mechanical features include teleflex steering system with 20" S.S. destroyer wheel, bronze axe head rudders and struts, fresh water cooling, engine room acoustical insulation, and electric dual engine hatch lifters.

Additional Description The 3500 Open features a transferable 5 year limited warranty on the hull. It is constructed with a water barrier outer gelcoat layer and hand-laid fiberglass with a special formulated resin. Wood and foam core stringers are vacuum sealed and encapsulated with handlaid fiberglass and integrated into the hull. Seacocks and all underwater thru-hull fittings are made of bronze, and a hullside exhaust system is used. The 3500 has six custom oval opening port lights with screens for great ventilation and natural light while below deck. The 3500 also has hullside ventilation and gelcoated boot line graphics.

Additional Description The 3500 Open deck also has a transferable 5 year limited warranty and is also constructed with a water barrier outer gelcoat and handlaid fiberglass. Tiara's custom diamond pattern non-skid is used on all deck and cockpit surfaces for sure, safe footing. The windshield is custom Tiara, made of welded aluminum and Solex 1/4" safety glass, and has handrails, and a center ventilation section with power actuator. Grab rails and a sturdy one-piece welded bow rail assist movement forward. The 3500 Open also has three aluminum deck hatches with screens and privacy covers, flush forward anchor locker with overboard drain, and a fiberglass molded-in bow pulpit with standard S.S. roller assembly. An optional windlass is available - the wiring is standard if one wishes to add this at a later time.

Engine Notes Top speed of boat: 37.2mph

Исключения

При продаже яхты исключаются личные вещи владельца.

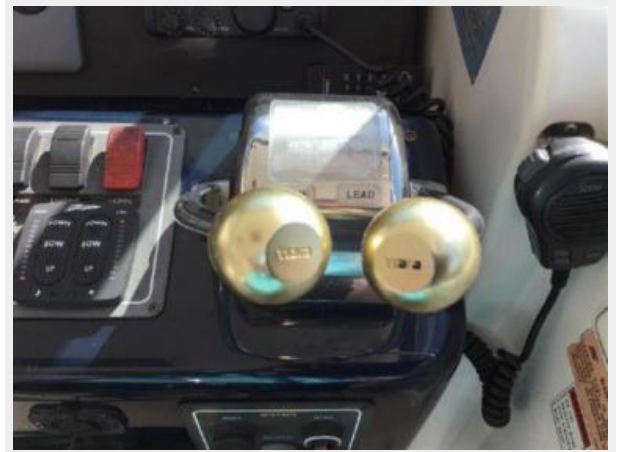
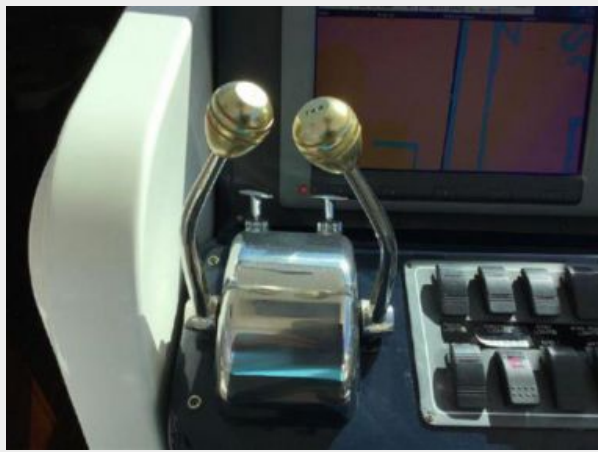
Отказ от ответственности

Компания предоставляет описание судна или яхты добросовестно, но не может гарантировать точность этой информации, а также не ручается за техническое состояние. Покупатель должен проинструктировать своих агентов или оценщиков исследовать представленную информацию более подробно, по собственному желанию. Продажа судна или яхты, изменение цены или снятие с продажи будет происходить без предварительного уведомления.

ФОТОГРАФИИ





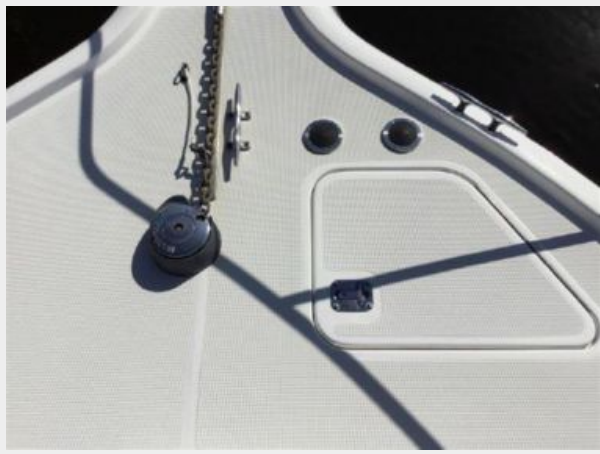














КОНТАКТЫ

Андрей Шестаков (Andrey Shestakov) – ведущий яхтенный брокер отдела продаж яхт и судов компании Shestakov Yacht Sales Inc. Официальный представитель Shestakov Yacht Sales Inc. для русскоговорящих клиентов в центральном офисе компании в Майами/Форт Лодердейл/Флорида/США.

Контактная информация

Email: andrey@shestakovyachtsales.com

Web: shestakovyachtsales.com

Телефоны

Краснодарский край: **+7(918)465-66-44**

США, Майами, Флорида: **+1(954)274-4435**

Время работы

Понедельник – Суббота: **9:00 - 21:00**
EDT

Воскресенье: **Закрето**

Адрес



Harbour Towne Marina, 850 NE 3rd St,
STE 213, Dania, FL 33004