

## 60FT 1983 MAPLE LEAF 60 — MAPLE LEAF



**Builder:** MAPLE LEAF

**Year Built:** 1983

**Model:** Cruising Sailboat

**Price:** PRICE ON APPLICATION

**Location:** Guatemala

**LOA:** 60' 0" (18.29m)

**Beam:** 14' 9" (4.50m)

**Max Draft:** 6' 3" (1.91m)

Our experienced yacht broker, Andrey Shestakov, will help you choose and buy a yacht that best suits your needs 60ft 1983 Maple Leaf 60 — MAPLE LEAF from our catalogue. Presently, at Shestakov Yacht Sales Inc., we have a wide variety of yachts available on our sale's list. We also work in close contact with all the big yacht manufacturers from all over the world.

If you would like to buy a yacht 60ft 1983 Maple Leaf 60 — MAPLE LEAF or would like help answering any questions concerning purchasing, selling or chartering a yacht, please call +1(954)274-4435

# TABLE OF CONTENTS

TABLE OF CONTENTS	2
SPECIFICATIONS	5
Overview	5
Basic Information	5
Dimensions	6
Speed, Capacities and Weight	6
Accommodations	6
Hull and Deck Information	6
Engine Information	6
DETAILED INFORMATION	7
DIMENSIONS	7
ACCOMODATIONS	7
VESSEL WALK THROUGH	8
SALON and GALLEY	8
ELECTRICAL and ELECTRONICS	9
Mechanical	10
Hull and Deck	10
Sails and Rigging	12
Additional Equipment	12
OWNER EXCLUSION	12
Exclusions	12
Disclaimer	12
PHOTOS	13
side deck	13
forward Pilot Housr	13
Pilot House	13
Pilot House-2	14
Pilot House -3	14

Helm	14
Helm-2	14
Galley	15
Pilot House	15
Galley-2	15
Galley-3	15
Galey-4	15
Galley-5	15
Salon	16
Salon-2	16
Dinette	16
Heater	16
Na Station	16
Na instruments	16
Companionway forward	17
Piano	17
Forward Cabin	17
Forward cabin	17
Forward Head	18
Forward Hed-2	18
Mid ship cabin	18
Midship cabin-2	18
Midship cabin-3	19
companionway	19
Salon	19
Salon	19
panionway aft	20
Aft cabin	20
Afg Cabin-2	20

Aft Head	21
Aft Cabin-3	21
Aft Head - Tub	21
Engine roo	21
Engine room-2	22
Engine	22
Generator	22
water Maker	22
Solar panels	23
Side dek	23
forward deck	23
Forward	23
Bow sprit	23
Side deck	23
Pilot house	24
Aft deck	24
Aft seating	24
Radar	24
out of water-2	25
out of water	25
Propeller	25
Out of water-3	25
CONTACTS	26
Contact details	26
Telephones	26
Office hours	26
Address	26

---

# SPECIFICATIONS

---

## Overview

---

True Pilot House Sailing Yacht - Complete Protection from the Elements at the Helm

Unique Maple Leaf yacht customized with sugar scoop transom and swim platform

Low engine hours – NEW Generator –Walk In engine room

Three sleeping cabins – 2 heads

Spectacular Interior – Cruise in comfort and luxury

Fiberglass side decks

Very bright and airy – numerous opening hatches and ports – Butterfly hatch forward

World Cruiser – Extra fuel tankage – Extra refrigerator and freezer – Solid build

This vessel is well suited for the adventurous world cruiser, or as a comfortable Live-Aboard yacht. Her Pilot House extends the interior living space to give her the feeling of a much larger boat. Her decks are open with lots of space to easily move fore and aft or provide a huge amount of outdoor living space.

Her shallow draft allows for access to cruising grounds that would restrict other vessels of this size, and she is easily handled by a couple

Built by Cooper Enterprises, Ltd, Vancouver, British Columbia

Call listing broker for more details or to make an appointment to see this vessel.

---

## Basic Information

---

**Category:** Cruising Sailboat

**Model Year:** 1983

**Year Built:** 1983

**Country:** Guatemala

---

## Dimensions

---

**LOA:** 60' 0" (18.29m)

**LOD:** 56' 6" (17.22m)

**Beam:** 14' 9" (4.50m)

**Max Draft:** 6' 3" (1.91m)

**MFG Length:** 60' 4" (18.39m)

---

## Speed, Capacities and Weight

---

**Displacement:** 55000 Pounds

**Water Capacity:** 360 Gallons

**Holding Tank:** 120 Gallons

**Fuel Capacity:** 840 Gallons

---

## Accommodations

---

**Total Cabins:** 3

**Total Berths:** 5

**Total Heads:** 2

---

## Hull and Deck Information

---

**Hull Material:** Fiberglass

---

## Engine Information

---

**Engines:** 1

**Manufacturer:** Perkins

**Model:** M225

**Engine Type:** Inboard

**Fuel Type:** Diesel

## DETAILED INFORMATION

### DIMENSIONS

LOA -----	60 ft 4 in -----	18.39 mtr
LOD -----	56 ft -----	17.1 mtr
Beam -----	14 ft 9 in -----	4.50 mtr
Draft -----	6 ft 3 in -----	1.90 mtr
Displacement -----	55,000 lbs ---	24,948 kilo
Fuel -----	840 gal in (5) tanks -----	3,180 ltr
Water_____	360 gal in (3) tanks -----	1,363 ltr
Holding ----	120 gal-----	455 ltr
Engine-	Perkins 6 cyl M225 diesel 225 hp ( 615 hrs)	
Generator –	Northern Lights 6 kw ( 7 hrs) 2017	

### ACCOMODATIONS

3 cabins – (1) cabin with queen berth, (2) cabins each with 2 single berths

2 heads w showers – One forward of the Salon to Starbd. One located in the aft stateroom to Port

Air conditioning provided throughout the vessel – Mermaid Marine Air

MASTER CABIN – aft

Large Master with queen berth - easy access top berth from side or foot of the bed

Lots of windows and ports for ventilation

Good amount of storage with full wardrobe and hanging lockers

Full bath with head, shower, and tub

GUEST CABIN w/ tow single berths forward

Opening butterfly hatch and side port for light and ventilation

Lots of storage and hanging locker

Very private for guests

GUEST/CREW CABIN- midships

Two single berths

Storage and hanging locker

FORWARD HEAD SERVES BOTH CABINS

---

## VESSEL WALK THROUGH

---

V-berth forward followed aft by a head to Starbd and hanging locker to Port. Across from the forward head is a guest cabin to Port with over and under single berths. Next aft is the Main Salon with dining table to Port and seating Port and Starbd. The Aft portion of the Salon is a U-Shaped galley to Port of the entry companionway. A companionway to Starbd leads past the engine room and provides access to the master stateroom aft. A Navigation station lies to Starbd, and forward of the companionway leading aft. A head is located to Port and accessed from the master stateroom.

---

## SALON and GALLEY

---

Galley: located to Port at aft section of main Salon. Lots of counter space with tiled counter tops. U-shaped for safety at sea and convenient to steps to the pilot house, and main Salon dinette.

(2) FrigeBoat- Door access refrigerators

(1) FrigeBoat- Door freezer

(1) Technautics chest freezer

Double SS sinks

Dickinson (3) burner LPG range with oven – (3) 20 lb LPG tanks

Sharp Carousel Microwave

Fresh water r – (3) Stainless Steel tanks – total 360 gal

Salon: Very bright and airy with large windows and opening hatches. This is a cozy area with nice storage shelves, bookcases, and cabinets. The Hi/Lo table is very practical as a dinette and also serves as a cocktail table

LPG heater in Main Salon



Comfortable leather couches for relaxing or as part of the dinette

Huge – Spacious area with seating to Port and Starboard

---

## **ELECTRICAL and ELECTRONICS**

---

Electrical:

(4) Guess 80-watt solar panels, (2) Kyocera 135-watt panels – total 590 watts

(2) Blue Sky MPPT solar controllers

(2) Xantrex Link-Lite voltage monitors

Battery – 8D AGM

Charging systems: Alternator on main engine, solar panels, wind generator, battery charger

Air X wind turbine

(2) Marinco 30 Amp shore power cord outlets

AC and DC distribution breaker panels

AC outlets throughout the vessel

Electronics:

Raymarine E80 Chart Plotter

Radar- Raymarine E80

Benmar – Auto pilot

Comnav – Auto pilot

Garmin 4208 GPS -Map

Interphase forward looking sonar

Icom ICM802 SSB radio

Icom ICM502 VHF radio

Raymarine tri-data (speed, depth, log)

Raymarine ST60 wind speed and direction

McMurdo EPIRB (expired battery)

Ritchie compass

---

## Mechanical

---

Engine- Perkins 6 cyl M225 diesel 225 hp ( 615 hrs)

Borg Warner velvet drive transmission –w 1 ¾” SS propeller shaft and dripless shaft seal

With feathering propeller

Morse controls

Racor fuel filter/water separator

Generator – Northern Lights model 673L3 - 6 kw ( 7 hrs) NEW 2017

W Racor fuel filter

Bow thruster – Side Power

Water Maker – Offshore Marine Lab 200 gpd 12v

(3) air conditioners w reverse cycle heat

Bauer scuba tank compressor – appears new

Wash Down pump

(5) electric automatic Rule submersible bilge pumps

(1) manual Whale type bilge pump

---

## Hull and Deck

---

Hull – FRP (fiberglass) w/ closed cell foam core

Hull stiffened with longitudinal stringers and transverse Bulkheads

Modified fin keel with bulb ballast – fully protected skeg hung rudder w/ prop cutout

Deck - FRP (fiberglass) w/foam core – teak overlay in limited areas

Pilot House-

Hydraulic steering

---

Engine controls

Chart Plotter/Radar – Raymarine C80

Raymarine tri data

Raymarine wind speed/direction ST60

Benmar audio pilot – Comnav auto pilot

Bow Thruster control

Uniden UM525 VHF radio w/hailer

Overhead red/white lights (4)

(2) 12 fans

Lewmar windlass

Ground tackle – Plow anchor w/ 7/16 chain and rode

Hinged dinghy davits (solar panels atop)

Large lazarette storage locker aft (propane locker, access to steering quadrant)

(6) new Lewmar opening hatches (2015)

Butterfly opening hatch above V-berth

Adequate ventilation provided by deck hatches, windows, doors and opening ports

SS stanchions and double lifelines

1" SS bow pulpit and stern pushpit

4" wide teak toe rails

Aluminum frame hatches with acrylic lights

SS mooring cleats

Teak grab rails on Cabin House

Stern Arch – large frame gantry at stern supports solar panels, wind generator, radar dome and other antennas.

---

Complete w/ fenders, canvas covers, dock lines

## **Sails and Rigging**

---

Cutter rigged w/ (2) ProFurl roller furlers

Mainsail w/slab reefing – Lewmar traveler

Anderson ST winches at mast, and Lewmar ST winches in cockpit

## **Additional Equipment**

---

Splendid washer/dryer

Console tender w/ 20 hp Honda outboard

Revere “Elite” life raft – (not certified)

## **OWNER EXCLUSION**

---

Zodiac dinghy and outboard

## **Exclusions**

---

Owner's personal belongings.

## **Disclaimer**

---

The Company offers the details of this vessel or yacht in good faith but cannot guarantee or warrant the accuracy of this information nor warrant the condition of the vessel. A buyer should instruct his representatives, agents, or his surveyors, to investigate such details as the buyer desires validated. This vessel or yacht is offered subject to prior sale, price change, or withdrawal without notice.

# PHOTOS

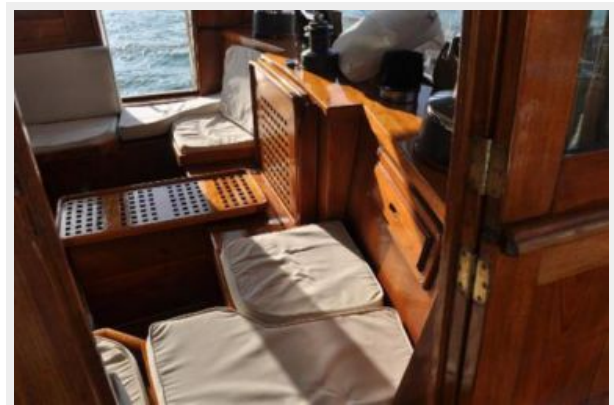
side deck



forward Pilot Housr



Pilot House



**Pilot House-2**



**Pilot House -3**



**Helm**



**Helm-2**



**Pilot House**



**Galley**



**Galley-2**



**Galley-3**



**Galley-4**



**Galley-5**



**Salon**



**Salon-2**



**Dinette**



**Heater**



**Na Station**



**Na instruments**





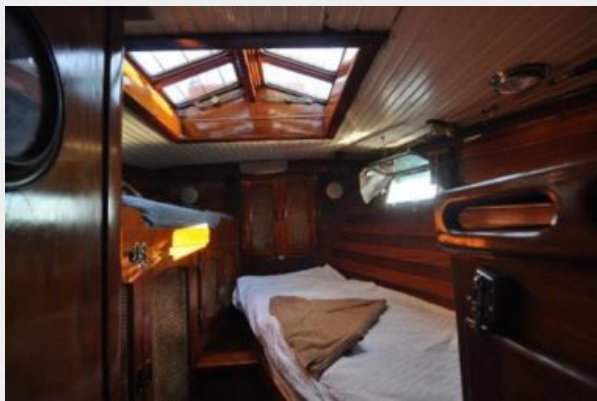
**Piano**



**Companionway forward**



**Forward Cabin**



**Forward cabin**



**Forward Head**



**Forward Hed-2**



**Mid ship cabin**



**Midship cabin-2**



**Midship cabin-3**



**companionway**



**Salon**



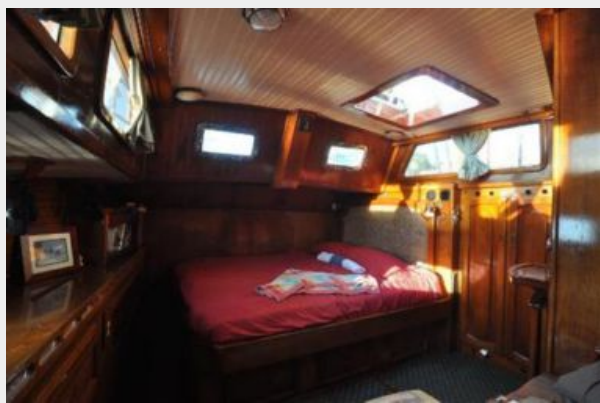
**Salon**



panionway aft



Aft cabin



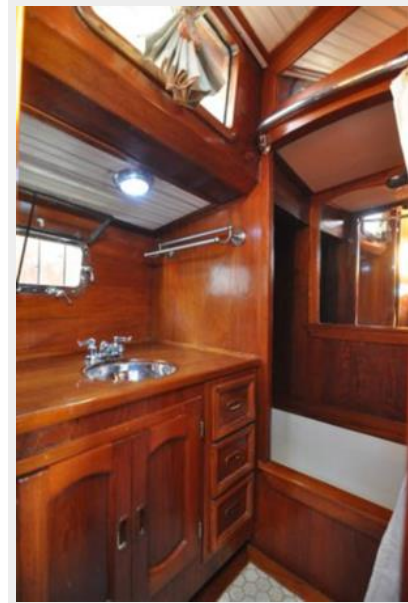
Afg Cabin-2



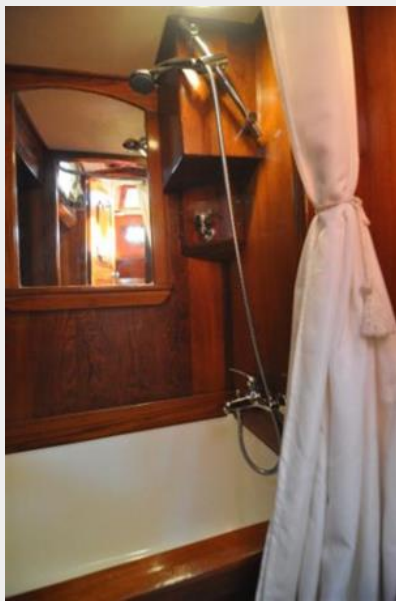
**Aft Cabin-3**



**Aft Head**



**Aft Head - Tub**



**Engine room**



## Engine room-2

### Engine



### Generator



### water Maker



**Solar panels**



**Side dek**



**forward deck**



**Forward**



**Bow sprit**



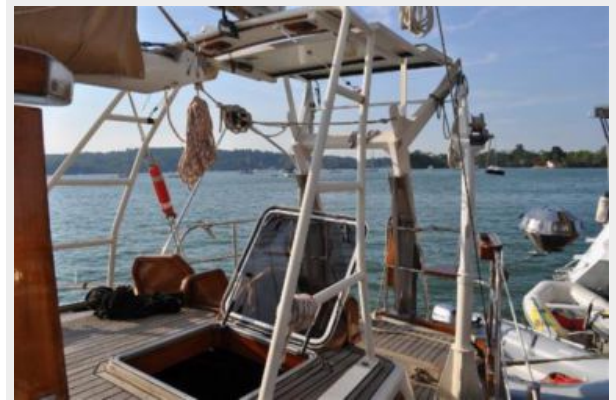
**Side deck**



**Pilot house**



**Aft deck**



**Aft seating**



**Radar**





**out of water**



**out of water-2**



**Out of water-3**



**Propeller**



# CONTACTS

---

Andrey Shestakov, leading yacht broker of the sales department of Shestakov Yacht Sales Inc. Shestakov Yacht Sales Inc., the official representative of the Miami/Fort Lauderdale FL headquarters.

## Contact details

---

Email: [andrey@shestakovyachtsales.com](mailto:andrey@shestakovyachtsales.com)

Web: [shestakovyachtsales.com/en/](http://shestakovyachtsales.com/en/)

## Telephones

---

USA: +1(954)274-4435

## Office hours

---

Monday – Saturday: **9:00 - 21:00** EDT

Sunday: **closed**

## Address

---



Harbour Towne Marina, 850 NE 3rd St,  
STE 213, Dania, FL 33004