

## R & R — AZIMUT



**Судостроитель:** [AZIMUT](#)

**Год постройки:** 2004

**Модель:** Моторная яхта

**Цена:** ЦЕНА ЯХТЫ ПО ЗАПРОСУ

**Местонахождение:** United States

**Длина общая:** 80' 0" (24.38m)

**Ширина:** 21' 6" (6.55m)

**Макс. осадка:** 6' 6" (1.98m)

Купить R & R — AZIMUT а также выбрать подходящую вам яхту из нашего каталога яхт вам поможет опытный яхтенный брокер Андрей Шестаков. На сегодняшний день компания Shestakov Yacht Sales Inc. имеет большое количество яхт в собственном списке продаж, а также тесно сотрудничает со всеми крупными яхтенными производителями по всему миру.

Для того чтобы купить яхту R & R — AZIMUT а также проконсультироваться по любому вопросу связанному с покупкой, продажей, чартером яхт позвоните по телефону **+7(918)465-66-44**.

# ОГЛАВЛЕНИЕ

ОГЛАВЛЕНИЕ	2
ХАРАКТЕРИСТИКИ	5
Обзор	5
Основная информация	6
Размеры	6
Скорость, вместимость и масса	7
Размещение	7
Корпус и палуба	7
Информация о двигателе	7
ПОДРОБНОЕ ОПИСАНИЕ	8
Main salon	8
Dining Area	8
Galley	8
Master Stateroom	9
Master Head	9
Starboard Stateroom	10
Starboard Head	10
Port Stateroom	10
Port Head	10
Bow Stateroom	11
Bow Head	11
Flybridge	11
Lower Helm	12
Crew Head	12
Crew Quarter	12
Decks & Superstructure	13
Aft Deck	13
Fire Fighting and Safety Equipment	14

Main Machinery	14
Engine Room	14
Исключения	15
Отказ от ответственности	15
ФОТОГРАФИИ	16
6764959_20191112134828421_1_LARGE	16
6764959_20191112134903600_1_LARGE	16
6764959_20191112134909678_1_LARGE	16
6764959_20191112134914696_1_LARGE	16
6764959_20191112134919549_1_LARGE	16
6764959_20191119072832749_1_LARGE	16
6764959_20191119072838212_1_LARGE	17
6764959_20191119072859824_1_LARGE	17
6764959_20191119072927912_1_LARGE	17
6764959_20191119072933101_1_LARGE	17
6764959_20191119072943741_1_LARGE	17
6764959_20191119072949119_1_LARGE	17
6764959_20201110114831743_1_LARGE	18
6764959_20191119072959547_1_LARGE	18
6764959_20201110120436342_1_LARGE	18
6764959_20201110120501181_1_LARGE	18
6764959_20201110120519786_1_LARGE	18
6764959_20201110120544561_1_LARGE	18
6764959_20201110120643255_1_LARGE	19
6764959_20201110120626517_1_LARGE	19
6764959_20201110120656251_1_LARGE	19
6764959_20201110120726202_1_XLARGE	19
6764959_20201110120823189_1_LARGE	19
6764959_20201110120927899_1_LARGE	19

---

6764959_20201110120938348_1_LARGE	20
6764959_20201110121847376_1_LARGE	20
6764959_20201110122002590_1_LARGE	20
6764959_20181031150205316_1_LARGE	20
6764959_20181031150207228_1_LARGE	20
6764959_20181031150209060_1_LARGE	20
6764959_20181031150210909_1_LARGE	21
6764959_20181031150213005_1_LARGE	21
<b>КОНТАКТЫ</b>	<b>22</b>
Контактная информация	22
Телефоны	22
Время работы	22
Адрес	22

# ХАРАКТЕРИСТИКИ

## Обзор

The Azimut 80 Carat is an open and largely informal family yacht, a trait she shares with other models in the Azimut line. Her informality does not imply any lack of quality in her finish, however. Cherry bulkheads, cabinetry and overhead accents are highly detailed, well fitted and finished in high-gloss lacquer that twinkles with clear reflections of recessed overhead lights. Upholstered furniture, soft bulkhead panels and dramatically shaped overheads are in neutral hues that nicely complement the woodwork. Her countertops are granite. The master head sole is marble, while wood is used in other heads. The sole of the in-line galley is upgraded to marble and is easy to clean and comfortable on the feet. The Carat's profile, from the talented hand of stylist Stephano Righini, identifies her as a sister to other Azimut yachts, both larger and smaller. Yet unlike Azimut's that have a large, continuous oval pattern in the deckhouse window, the Carat's window is divided by a sizable "dorsal fin" post. It eases the earlier look's boldness and blends nicely into the curves of the pilothouse and flying bridge. This boat's size puts her on the cusp of that point between owner-operated and crewed yacht, maybe a little past it. Only the most capable family will want to cruise her alone. Most will carry at least a captain, perhaps a mate, too. The full-beam master is near amidships, where pitch will be minimal. The master has a vanity and a large walk-in locker to port, and a comfortable settee to starboard. The head includes a spacious shower, a bidet and two sinks. VIP guests are accommodated in a bow stateroom with an island queen berth. The remaining four guests occupy two twin-berth cabins, port and starboard between the master and VIP staterooms. Though more compact, the twin cabins are finished and outfitted as nicely as the two main staterooms. For example, the VIP and twin cabins have nearly identical heads: All have circular showers with water outlets overhead that provide the rain-showering equivalent of surround sound. Curved acrylic shower doors rotate out of the way when not in use, allowing extra floor space in front of the toilet and sink. The Carat's dining arrangement lies on the main deck's starboard side. The layout includes an oval dining table surrounded by four chairs inboard, and a large banquette outboard. The galley lies to port, facing the table with a beautifully built tambour panel which allows the galley to remain open as a buffet for informal dinners and cocktail parties. During more formal meals, the panel can be closed for privacy. A lower helm is forward of the galley. Aft, the salon has fixed seating on two settees facing an entertainment center in the after corner of the room. Like many yachts, the Carat has a power sliding glass door in a glass bulkhead aft, but unlike many other such doors, Azimut's is weathertight. It includes an innovative system that offsets as it closes, sealing tightly against a gasket. The afterdeck is spacious and fully protected from sun and rain by the extended flying-bridge deck above. Full-length side decks and aft mooring stations with raised capstans, cleats and roller fairleads make docking a snap. A single stairway leads to an integral swim platform. In port or at anchor, a transom door provides entry to the engine-room and, through it, access to the crew's quarters. Stern stowage lockers large enough for personal watercraft flank the door. Accessibility in the engine-room is good outboard of the engines, excellent in all other areas. Additional safety features include emergency fire dampers on the ventilation ducts and a structural cage around the V-drive shaft, features too often omitted in

similar class vessels. The flying-bridge deck is huge. Even with a tender stowed aft and a large sunpad, there is still plenty of room for socializing. The driver's pod at the centerline helm has enough space for a companion on either side. Aft, curved settees flank a small table with what Azimut calls a perimeter leaf. This expands the table by wrapping around, rather than inserting in, the smaller top. In addition to an open aft stair, an innovative alternating-tread wood stair accesses the flying bridge from the galley. Steeper than most stairs to preserve space, it has footpads rather than full-width treads. It is a clever design that has proved safer than inclined ladders in applications afloat and ashore. **Performance and Handling**

She tracks true and is good in turns, with moderate inboard banking, little loss of speed and no noticeable bow drop. In moderate seas the ride is easy with no pounding or slap, and inside, the boat is quiet enough for normal conversation at the helm. Encountering a combination of swells and small chop is not the same as running in heavy weather, but the Carat's V-hull with a fine entry and 12 degrees of deadrise at the transom takes on the seas with ease. Navigational controls are straightforward and easy to operate, and response to the wheel and throttles is immediate and predictable. She tops out at 31.4 knots at 2300 rpm, being equipped with MTU series 2000 M-91 developing 1,500 hp each. The Azimut 80 Carat's combination of reliable composite construction, interior and exterior comfort, smart yet subdued styling and excellent performance make her a jewel worthy of consideration. She is suitable for formal or informal entertaining, day-tripping or extended cruising.

## Основная информация

---

**Тип судна:** Моторная яхта

**Модельный год:** 2004

**Год постройки:** 2004

**Страна:** United States

**Открытая палуба мостика:** Да

## Размеры

---

**Длина общая:** 80' 0" (24.38m)

**Ширина:** 21' 6" (6.55m)

**Макс. осадка:** 6' 6" (1.98m)

---

## Скорость, вместимость и масса

---

**Водоизмещение:** 125400 Pounds

**Вместимость воды:** 410 Gallons

**Вместимость сточного бака:** 172 Gallons **Объем топливного бака:** 1484 Gallons

---

## Размещение

---

**Всего кают:** 5

**Всего ком. состава:** 5

---

## Корпус и палуба

---

**Материал корпуса:** Fiberglass

---

## Информация о двигателе

---

**Двигатели:** 2

**Производитель:** MTU

**Модель:** 12V 2000M91

**Тип двигателя:** Inboard

**Тип топлива:** Diesel

---

# ПОДРОБНОЕ ОПИСАНИЕ

---

## Main salon

---

- Gray Carpet throughout
- Overhead paneling with seven recessed lights
- Wood valances
- Drop shades and drapes
- Curtain, aft
- Cherry, cabinetry, port, with Samsung flat screen television on remote control lift
- Built-in curved sofa, port, with pillows
- Built-in curved sofa, starboard, with pillows
- Built-in chair, aft
- Burled wood countertop, port and starboard outboard
- Cherry table with burled wood and glass top
- Samsung Blue Ray player
- Crestron Integrated System
- Direct TV
- Sony FM/AM Receiver
- Sony AV Multichannel Receiver
- WIFI Router

## Dining Area

---

- Suede upholstered overhead
- Cherry wood overhead trim piece with fiberglass inlay and five recessed lights
- Built-in cabinetry, port, with privacy shutters to galley, cabinets for secured glassware and china storage.
- Built-in full-length cabinet, starboard forward, with false upper panel, and storage in lower
- Oval cherry wood table seats
- Scottsman 32 Bottle wine cooler

## Galley

---

- Frigidaire refrigerator and freezer
- Pantry, forward inboard
- Hoshizaki Ice Maker
- Exit door to portside deck
- Two cherry wood cabinets, port outboard and centerline inboard, with granite countertops



- Miele 4-burner smooth surface stovetop
- Miele oven
- General Electric Profile microwave oven
- Two round stainless-steel sinks
- Miele Incognito dishwasher
- Single-lever faucet
- Built-in cabinets overhead, port outboard and centerline inboard
- Stairway to crew quarters and engine room, aft

---

## Master Stateroom

---

- Ultra-suede overhead with six lights
- Fiberglass inlay with three recessed lights
- King Size Island berth five drawers below
- nightstands with drawers below
- Two swing-arm reading lamps
- Mirror on aft bulkhead
- Overhead soffit with two recessed lights
- LED lights, three port and three starboard, with drop shades and curtains; matching
- Built-in dresser, port, with nine drawers and two cabinets
- Built-in drawers with entertainment center, starboard, with:
- 42"Samsung television
- Samsung Blu Ray player
- Built-in vanity, starboard, with mirror, stool; six drawers; two cabinets
- Walk-in closet with full-length mirror; built-in drawers; three recessed lights
- SSBC Speaker selector volume control Rotel amplifier

---

## Master Head

---

- Marble sole
- Fiberglass overhead with four recessed lights
- Fiberglass soffit over countertop with three recessed lights
- Built-in vanity, outboard, with marble countertop and two sinks
- Two mirrored medicine cabinets
- Porthole with shades
- Vacuflush head
- Walk-in shower with overhead light, shower head on hose; horizontal shower nozzles; hot/cold faucet;

---

## Starboard Stateroom

---

- Ultra-suede overhead with four recessed lights
- Twin berths
- Curtains
- Portlight
- Built-in nightstand between berths
- Sony AM-FM/CD player with two stereo speakers
- Four mirrored panels on forward bulkhead
- Two swing-arm reading lamps
- Two air conditioning units, one under each berth
- Hanging locker
- 12" Samsung Flat Screen TV

---

## Starboard Head

---

- Entry via companionway and starboard stateroom
- Fiberglass overhead with four recessed lights
- Built-in vanity with marble countertop and sink
- Mirrored panels above sink
- Storage locker
- Vacuflush
- Portlight with drop shade
- Shower with Lexan circular door
- Shower stall with circular door

---

## Port Stateroom

---

- Ultra-suede overhead with four recessed lights
- Double berth
- Six mirrored panels, aft
- Hanging locker, port
- Cruisair SMX air conditioning control
- Porthole with shade
- Sony AM-FM/CD player
- 12" Samsung Flatscreen TV

---

## Port Head

---

- Wood flooring
- Fiberglass overhead with three recessed lights

- Built-in cabinet, port forward, with marble countertop sink and faucet
- Mirrored vanity
- Storage locker
- Vacuflush head
- Portlight
- Drop shade
- Shower area with circular Lexan door

---

## Bow Stateroom

---

- Ultra-suede overhead with one recessed light
- Cherry wood overhead soffit with eight recessed lights
- Curtains
- Queen Island berth, centerline
- Two drawers below berth, aft
- Built-in countertops, port and starboard outboard
- Sony stereo
- Cruisair SMX II air conditioning control
- 14" Samsung Flat Screen TV
- Walk-in closet, starboard, with overhead recessed lights

---

## Bow Head

---

- Fiberglass overhead with four recessed lights
- Built-in curved wood cabinet, port, with marble countertop and backsplash, sink with faucet
- Storage locker
- Wood frame mirror over sink
- Vacuflush head
- Circular Lexan door to shower area
- Showerhead on hose, overhead showerhead, four shower nozzles

---

## Flybridge

---

- Fiberglass decks
- Curved seating, port and starboard
- Oval table, starboard
- Cabinet, center forward, with built-in sink, BBQ grill, molded top, refrigerator
- Fiberglass storage cabinet, starboard forward
- Bench helm seat, forward
- Full VDO engine instrumentation
- Jabsco search light controls

- Steering wheel
- Raymarine rudder indicator
- Trim tab level indicator
- American Bow thruster bow/stern
- Life ring
- Jabsco searchlight controls
- MTU single-lever controls
- Sun lounge
- Opacmare davit
- Nouvarina 14' inflatable tender with 60 HP Yamaha outboard with only 40 hours

---

## Lower Helm

---

- Vinyl overhead panels with four recessed lights
- Leather dash pad and helm
- Leather seating with adjustable center seat
- Cruisair SMX II air conditioning control
- Two recessed red lights over helm area
- Wood steering wheel
- Single-lever MTU controls
- Touch-screen control panel to computer system can security
- White Star compass
- American bow thruster ( Bow & Stern)
- Two stainless steel grab rails
- Raymarine ST 290
- ABT Trac Zero Speed Stabilizer
- Raymarine Rudder Indicator
- Full VDO engine instrumentation
- Icom M504 VHF
- Simrad AP28 Autopilot
- Garmin 7215 GPS Plotter
- Garmin 7015 GPS Plotter
- Raymarine RL70 radar

---

## Crew Head

---

- Vacuflush Head
- Mirrored Vanity
- Shower area with circular door

---

## Crew Quarter

---

- L-shaped Dinette
- Built-in cabinet with granite countertop, stainless steel sink, single-lever water faucet
- Overhead storage, aft
- Miele Novotronic T1565C clothes dryer
- Miele Novotronic W1918 clothes washer
- Cruisair SMX II air conditioning control
- Sanyo refrigerator
- Head pump and vacuum tank, under stairs, with discharge Y-valve
- Door to engine room
- Upper and lower bunks

## Decks & Superstructure

---

- Boarding doors, port and starboard, to cabin
- Teak decks, non skit halfway forward
- Teak cap rail
- Lights in foredeck step-up
- Two windshield wipers with washers
- Sun lounge area
- Overhead deck lights, four port and four starboard
- Anchor washdown shut-off valve
- Hatch to chain locker, port and starboard
- Approximately 90-lb stockless anchor with 250' of chain
- Electric/hydraulic passerelle

## Aft Deck

---

- Fiberglass overhang with eight recessed lights
- Teak over fiberglass deck
- Locker, port forward
- Stern cleat, port and starboard
- Hawse eyes, port and starboard, with rollers
- Maxwell 1500 windlass, port and starboard, with deck control
- Teak table on stainless steel pedestals
- Four teak folding chairs
- Three lockers, aft
- Fire hose outlet, in center locker
- Control panel for aft stairway, port hatch, starboard hatch, and swim ladder
- Teak cap rail
- Freezer to starboard

---

## Fire Fighting and Safety Equipment

---

- Portable Extinguishers: Dry chemical
- Built-in System: Three CO2
- 220-volt Auxillary fire pump

---

## Main Machinery

---

- MTU ENGINE MODEL #: 12V2000
- Filter: dual Racor
- Controls: MTU / electronic
- Watermaker: Sea Recovery
- Bilge Pumps: 3 electric/automatic, 2 sump, 220-volt electric to compartment manifold
- Freshwater Pressure System: Two 24 VDC
- Bow Thruster: BCS
- Stern Thruster
- 
- Propellers: 5-bladed nibral
- Propeller Shafts: 3.5" stainless steel
- Steering Gear: hydraulic
- Air Conditioning: Cruisair direct expansion

---

## Engine Room

---

- Fluorescent overhead A.C lights with safety lenses
- Kohler 32-kw generator , mid centerline 3545
- Kohler 23-kw generator, aft centerline 3547
- Racor fuel filters to each generator
- Hydraulics to davit, swim ladder, pod hatches and step door, trim tabs, steering
- Main circuit panel
- Two fiberglass mufflers to generators with the water separators
- Two 24-volts freshwater system pumps with accumulator tank, filter and pressure gauge
- Water Heater
- Air conditioning units, two port and two starboard
- Drip-less shaft seals
- 24-volt fuel transfer pump
- Manual fuel transfer
- Circuit panel to crew quarters
- Bilge pump to six compartment manifold with shut-off valves
- Battery switches to each generator, each engine, ship service, and fuel shut-off valves, centerline forward below decks
- Electric/automatic bilge pump

- Craftsman tool box
- Mastervolt 24- volt 75 amp battery charger to house service batteries (2)
- 230-Volt fire pump
- Six 12-volt batteries to ship's service
- Emergency steering wheel and valves
- Air conditioning raw water circulating pump
- A.C. and D.C. circuit panel
- Two 12-volt batteries to engines
- Engine emergency stop buttons
- Sea Recovery watermaker

## **Исключения**

---

При продаже яхты исключаются личные вещи владельца.

## **Отказ от ответственности**

---

Компания предоставляет описание судна или яхты добросовестно, но не может гарантировать точность этой информации, а также не ручается за техническое состояние. Покупатель должен проинструктировать своих агентов или оценщиков исследовать представленную информацию более подробно, по собственному желанию. Продажа судна или яхты, изменение цены или снятие с продажи будет происходить без предварительного уведомления.

# ФОТОГРАФИИ

6764959\_20191112134828421\_1\_LARGE



6764959\_20191112134903600\_1\_LARGE



6764959\_20191112134909678\_1\_LARGE



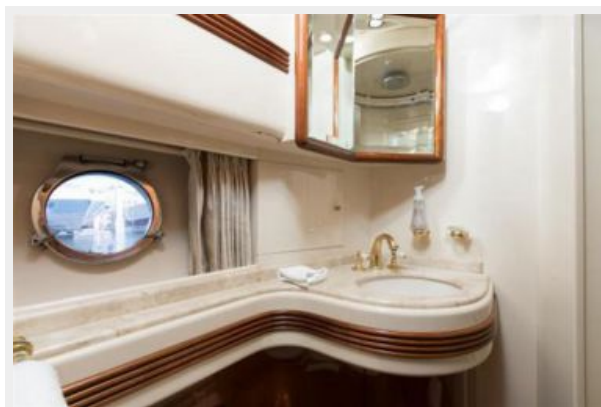
6764959\_20191112134914696\_1\_LARGE



6764959\_20191112134919549\_1\_LARGE



6764959\_20191119072832749\_1\_LARGE





6764959\_20191119072838212\_1\_LARGE



6764959\_20191119072859824\_1\_LARGE



6764959\_20191119072927912\_1\_LARGE



6764959\_20191119072933101\_1\_LARGE



6764959\_20191119072943741\_1\_LARGE



6764959\_20191119072949119\_1\_LARGE



6764959\_20191119072959547\_1\_LARGE



6764959\_20201110114831743\_1\_LARGE



6764959\_20201110120436342\_1\_LARGE



6764959\_20201110120501181\_1\_LARGE



6764959\_20201110120519786\_1\_LARGE



6764959\_20201110120544561\_1\_LARGE





6764959\_20201110120626517\_1\_LARGE



6764959\_20201110120643255\_1\_LARGE



6764959\_20201110120656251\_1\_LARGE



6764959\_20201110120726202\_1\_XLARGE



6764959\_20201110120823189\_1\_LARGE



6764959\_20201110120927899\_1\_LARGE



6764959\_20201110120938348\_1\_LARGE



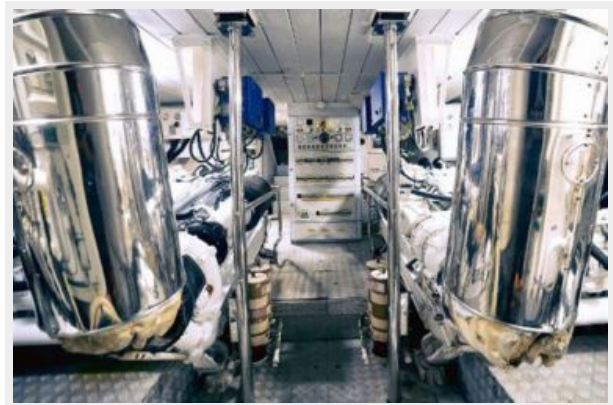
6764959\_20201110121847376\_1\_LARGE



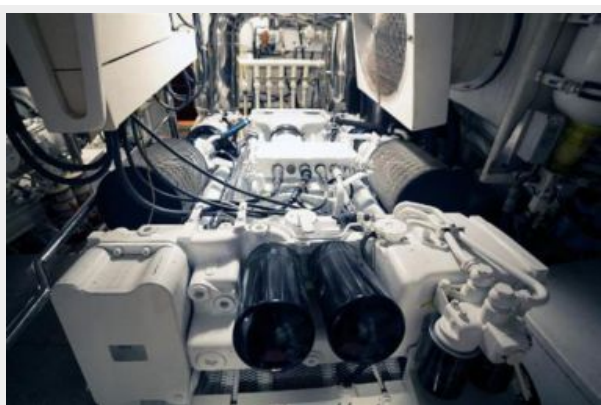
6764959\_20201110122002590\_1\_LARGE



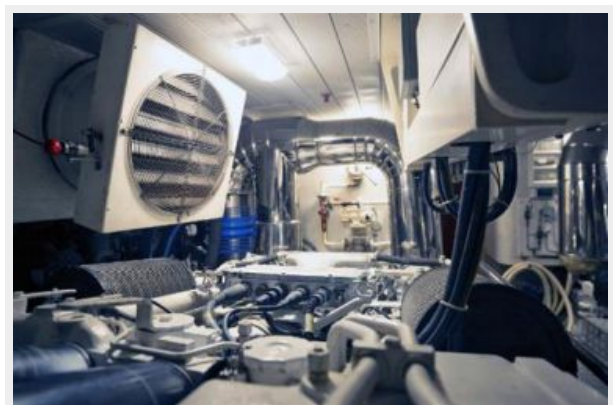
6764959\_20181031150205316\_1\_LARGE



6764959\_20181031150207228\_1\_LARGE



6764959\_20181031150209060\_1\_LARGE





6764959\_20181031150210909\_1\_LARGE



6764959\_20181031150213005\_1\_LARGE



# КОНТАКТЫ

---

Андрей Шестаков (Andrey Shestakov) – ведущий яхтенный брокер отдела продаж яхт и судов компании Shestakov Yacht Sales Inc. Официальный представитель Shestakov Yacht Sales Inc. для русскоговорящих клиентов в центральном офисе компании в Майами/Форт Лодердейл/Флорида/США.

## Контактная информация

---

Email: [andrey@shestakovyachtsales.com](mailto:andrey@shestakovyachtsales.com)

Web: [shestakovyachtsales.com](http://shestakovyachtsales.com)

## Телефоны

---

Краснодарский край: **+7(918)465-66-44**

США, Майами, Флорида: **+1(954)274-4435**

## Время работы

---

Понедельник – Суббота: **9:00 - 21:00**  
EDT

Воскресенье: **Закрето**

## Адрес

---



Harbour Towne Marina, 850 NE 3rd St,  
STE 213, Dania, FL 33004