

OUR TRADE PERSHING 74



Year Built: 2015

Model: Cruising Yacht

Price: PRICE ON APPLICATION

LOA: 74' (22.56mm)

Beam: 18

Max Draft: 4' 9" (1.45mm)

Cruise Speed: 37 Knots Kts. (43 MPH)

Max Speed: 44 Knots Kts. (51 MPH)

Our experienced yacht broker, Andrey Shestakov, will help you choose and buy a yacht that best suits your needs **Our Trade Pershing 74** — n/a from our catalogue. Presently, at Shestakov Yacht Sales Inc., we have a wide variety of yachts available on our sale's list. We also work in close contact with all the big yacht manufacturers from all over the world.

If you would like to buy a yacht **Our Trade Pershing 74** — n/a or would like help answering any questions concerning purchasing, selling or chartering a yacht, please call **+1(954)274-4435**

TABLE OF CONTENTS

TABLE OF CONTENTS	2
SPECIFICATIONS	3
Overview	3
Basic Information	3
Dimensions	3
Speed, Capacities and Weight	3
Accommodations	4
Hull and Deck Information	4
Engine Information	4
PHOTOS	5
CONTACTS	13
Contact details	13
Telephones	13
Office hours	13
Address	13

SPECIFICATIONS

Overview

This Pershing 74 is Hull #12 and was purchased in October 2015. Spec'd out and built by Pershing for the US market, it was the owners 2nd Pershing. After delivery, the boat lived in fresh water for about 1 year and was then traded back to Ferretti Group for a Pershing 82. The popular Silver Metallic paint looks fantastic (stored undercover a good bit) and highlights a very optioned out boat with bow/stern thrusters, U/W lights, Water-maker, anchor chain air bag, SeaRex drives with Auto-trim, etc....The 1948hp MTU engines have under 600 hours and are ready to go! This will be the next Pershing 74 to sell so if this what you're looking at, take the time to preview this excellent value opportunity!

Basic Information

Category: Cruising Yacht

Model Year: 2016

Year Built: 2015

Dimensions

LOA: 74' (22.56mm)

LWL: 54' 7" (16.64mm)

Beam: 18

Max Draft: 4' 9" (1.45mm)

Speed, Capacities and Weight

Cruise Speed: 37 Knots Kts. (43 MPH)

Cruise Speed Range: 280

Max Speed: 44 Knots Kts. (51 MPH)

Water Capacity: 262 Gallons

Fuel Capacity: 1189 Gal Gallons

Accommodations

Total Cabins: 3

Sleeps: 6

Total Heads: 3

Crew Heads: 1

Hull and Deck Information

Hull Material: Composite Fiberglass

Hull Color: Silver Metallic

Engine Information

Engines: 2

Manufacturer: MTU

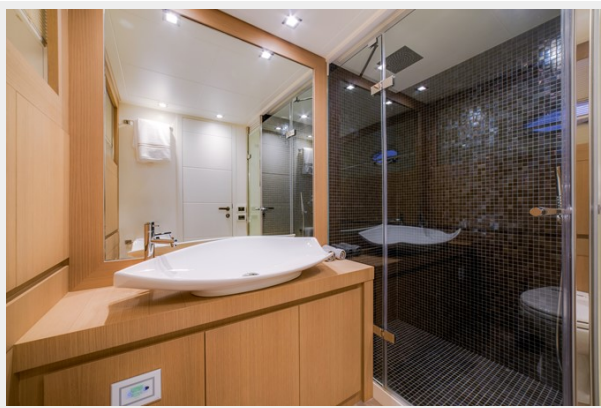
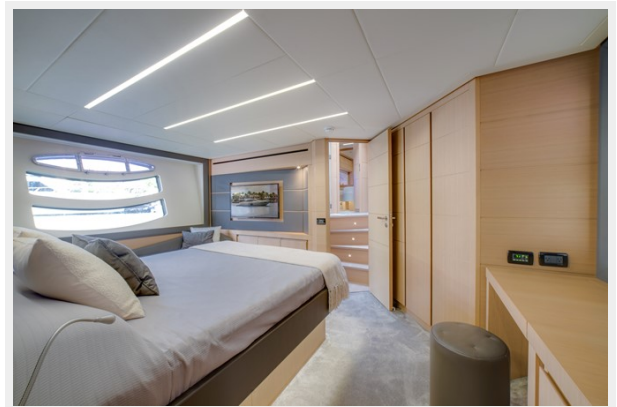
Engine Type: Inboard

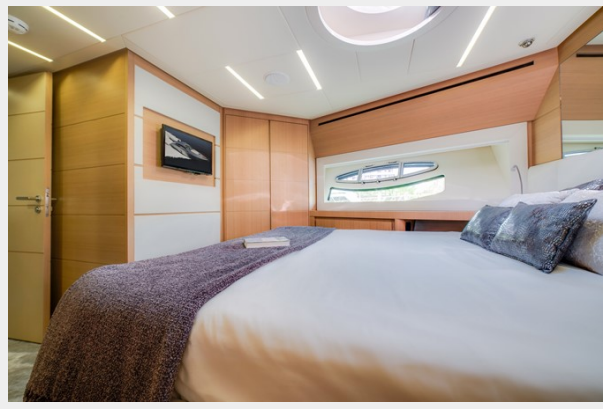
Fuel Type: Diesel

PHOTOS

















CONTACTS

Andrey Shestakov, leading yacht broker of the sales department of Shestakov Yacht Sales Inc. Shestakov Yacht Sales Inc., the official representative of the Miami/Fort Lauderdale FL headquarters.

Contact details

Email: andrey@shestakovyachtsales.com

Web: shestakovyachtsales.com/en/

Telephones

USA: +1(954)274-4435

Office hours

Monday – Saturday: **9:00 - 21:00** EDT

Sunday: **closed**

Address



Harbour Towne Marina, 850 NE 3rd St,
STE 213, Dania, FL 33004