

SOVANA — PASSPORT YACHTS



Builder: PASSPORT YACHTS

Year Built: 2014

Model: Center Cockpit

Price: PRICE ON APPLICATION

Location: United States

LOA: 54' 0" (16.46m)

Beam: 15' 6" (4.72m)

Max Draft: 6' 0" (1.83m)

Our experienced yacht broker, Andrey Shestakov, will help you choose and buy a yacht that best suits your needs **Sovana — PASSPORT YACHTS** from our catalogue. Presently, at Shestakov Yacht Sales Inc., we have a wide variety of yachts available on our sale's list. We also work in close contact with all the big yacht manufacturers from all over the world.

If you would like to buy a yacht **Sovana — PASSPORT YACHTS** or would like help answering any questions concerning purchasing, selling or chartering a yacht, please call **+1(954)274-4435**

TABLE OF CONTENTS

TABLE OF CONTENTS	2
SPECIFICATIONS	4
Overview	4
Basic Information	5
Dimensions	6
Speed, Capacities and Weight	6
Accommodations	6
Hull and Deck Information	6
Engine Information	6
DETAILED INFORMATION	7
Engine and Steering	7
Spars and Rigging	7
Sails and Canvas	8
Electrical	8
Navigation	9
Winches	9
Deck Fittings	9
Plumbing	10
Anchoring	11
Galley	11
Upgrades and accessories	11
Multiple Spare parts including:	12
Entertainment	12
Exclusions	12
Disclaimer	12
PHOTOS	14
CONTACTS	22
Contact details	22

Telephones	22
Office hours	22
Address	22

SPECIFICATIONS

Overview

Length Overall 54.5 ft.

Displacement 38,500 lbs.

Length at Waterline 45.47

Fuel Capacity 280 US gal.

Beam 15.15

Water Capacity 205 US gal.

Draft Deep 6'

Vertical Draft 63.5' (ICW)

Sail Area: Main 529 sq. ft. 130% Genoa 704 sq. ft. Working Jib 445 sq. ft.

Ballast 14,700 lbs.

1 Icom 506 VHF radio (New 12/2017)

1 HM 195 remote microphone (New 12/2017)

2 Raymarine eS97 (New 12/2017)

1 Raymarine i50 Depth (New 12/2017)

1 Raymarine i50 Speed (New 12/2017)

1 Raymarine i60 Wind (New 12/2017)

1 Raymarine ACU 400 pilot computer (New 12/2017)

1 Raymarine P70R control head (New 12/2017)

1 Raymarine EV1 Compass (New 12/2017)

1 Raymarine AIS 650 AIS unit (New 2017)

1 Raymarine AIS splitter (New 12/2017)

1 Fusion MS-UD755 stereo unit (New 12/2017)

Magnum MS-2812 Pure Sine Wave Inverter (New 12/2017)

Magnum ME-RC50 Remote Panel (New 12/2017)

Side Power Dual Prop Bow Thruster

Upgrade 3 Harken 70.2 STEC Electric Winches from Standard Electric Utility

Galvanic Isolator

Copper Strapping in Hull for SSB

Powder Coated Selden Spar and Boom

Fresh Water Deck Wash down

Dual Racor Filters

Removable Starboard Settee Table

Filler and Cushions for U shaped Dinette

Additional Cocktail Table with storage for Dinette

Folding Headboard in Aft Stateroom Berth

Colored Corian Upgrade in Galley and Heads

Glass Fronted Crystal Locker

Cherry Interior in lieu of Teak

Ultra Leather Fabric Upgrade in Main Salon

Stainless Towel/Safety Bar in Aft Head

In Boom Roller Preventer - Gybe Preventer

Cruise Air Reverse Cycle Air Conditioning System (36,000 BTU) 3 Units

MASE model I.S.8.1 Diesel Generator 7.8 kW (665 hours)

Basic Information

Category: Center Cockpit

Model Year: 2014

Year Built: 2014

Country: United States

Dimensions

LOA: 54' 0" (16.46m)

LWL: 48' 11" (14.91m)

Beam: 15' 6" (4.72m)

Max Draft: 6' 0" (1.83m)

Clearance: 63' 6" (19.35m)

MFG Length: 54' 6" (16.61m)

Speed, Capacities and Weight

Displacement: 38500 Pounds

Water Capacity: 135 Gallons

Fuel Capacity: 270 Gallons

Accommodations

Total Cabins: 2

Total Berths: 3

Total Heads: 2

Hull and Deck Information

Hull Material: Fiberglass

Engine Information

Engines: 1

Manufacturer: Yanmar

Engine Type: Inboard

Fuel Type: Diesel

DETAILED INFORMATION

Engine and Steering

- Yanmar 110 HP marine diesel engine. 675 Hours
- Flexible engine mounts.
- Dual Racor 500 fuel filters.
- Engine alarm systems.
- Foam insulated engine room.
- 12 Volt exhaust fan for engine room - AYBC requirement
- Raw water strainer for engine intake
- Scot Anti-siphon valve.
- Muffler/water lock system with gas and water separator.
- Bronze shaft strut with cutlass bearing.
- Gori folding propeller with line cutter
- 1 1/2 inch stainless steel prop shaft with three blade bronze propeller.
- Custom bronze stuffing box.
- Aluminum fuel tanks with baffles.
- Jefa Hydraulic Steering - rack and pinion steering
- Stainless steel steering wheel.
- Emergency steering system with tiller.
- Rudder bearing.
- Bronze rudder shoe.

Spars and Rigging

- Selden mast.
- In-mast Furling Main

- Five halyards: main, genoa-1, genoa-2, spinnaker and topping lift, led internally.
- Rigid Vang.
- Flag halyards at spreaders.
- LED mast head tricolor and anchor light.
- Deck and steaming lights.
- Masthead mounted windex.
- 316 stainless steel rigging with compression fittings.
- Furlex furling system for reaching sail stay.
- Furlex furling system for working jib headstay

Sails and Canvas

- Quantum furling mainsail.
- Quantum furling reacher.
- Quantum furling working jib – self tacking.

Electrical

- Customized Blue Sea electrical panel.
- 110-volt shore power system with 50/250 dual service.
- 110-volt outlets throughout.
- 110-volt GFI outlets in both heads and galley.
- A/C and D/C electrical wiring conduits.
- Four 12-volt 4-D AGM marine batteries.
- One Group 31 engine start battery.
- Two Group 31 windlass batteries.
- Balmar 110 Amp Alternator with 3 stage regulator.
- Heavy-duty battery switches.

- Two Balmar Digital Duo Chargers.
- 3000 watt Pure Sine Wave Inverter/Charger.
- LED cabin lights with dimmers customized to interior plan.
- Interior LED courtesy lights at floor level.
- Engine room and lazarette lights.
- Chart table light.
- LED running lights to international rule.
- Four 12 volt 6 cabin fans - Hella

Navigation

- RayMarine ST60 Plus sailing instruments to include depth, speed, and wind direction.
- RayMarine Type III Linear Hydraulic Autopilot.
- Icom or equivalent VHF radio with masthead antenna.
- Ritchie SP 5 pedestal mounted compass with cover.
- Cockpit mounted waterproof panel for navigation and exterior lights.

Winches

(All winches are Harken Radial) SEE UPGRADES ABOVE

- 2 - Two-speed #70 STC Genoa (Primary) winches.
- 1 - Two-speed #46 STC main sheet winch.
- 2 - Two-speed #46 STC utility winches.
- 2 - Two-speed #46 STC halyard winches.
- 2 - 10 locking winch handles.

Deck Fittings

- Six custom 316 stainless steel mooring fairleads.

- Six yachtsmen stainless steel mooring cleats.
- Boarding gates port and starboard.
- Stainless steel deck and cockpit drains.
- Five stainless steel cowl vents with cover plates.
- Teak cockpit sole.
- Fiberglass molded LPG storage compartment for two 20# tanks.
- Teak cockpit table with foldout leaves.
- Custom stainless steel companionway sliding hatch with acrylic insert.
- Custom stainless steel sliding drop board.
- Custom stainless steel boarding ladder on stern.
- Hard Dodger.
- Custom Stainless Steel laminated glass Windshield.

Plumbing

- Two stainless steel water tanks.
- Eleven-gallon hot water heater (110 volt and engine driven).
- Hot and cold pressure water system.
- Salt water deck wash down.
- Two galley floor pumps, salt and fresh water.
- Large stainless steel double sink in galley.
- Two large heads with shower
- Stainless steel sinks in each head.
- Two Raritan electric toilets, one in each head.
- Bronze ball cocks/thru hull fittings bonded to ships system.
- Rule 2000 electric 12-volt bilge pump with automatic float switch.
- Rule 3700 electric 12-volt emergency bilge pump with automatic float switch.

- Manual bilge pump.
- Wema fuel and water monitoring system

Anchoring

- Custom stainless steel double bow roller/stem head fitting.
- Delta 70 lb. Fast Set anchor with chain.
- Muir electric windlass.
- Custom stern anchor roller, hawse and cleat.
- Stern anchor locker.

Galley

- 12 volt refrigeration and freezer systems.
- Poured foam insulated refrigerator and freezer compartments.
- Top and front opening refrigerator freezer compartments.
- Three-burner stainless steel LPG stove with oven - Force 10
- Two LPG tanks.
- White Corian counter tops.
- Built-in microwave oven.
- Numerous drawers, lockers and dry storage bins.

Upgrades and accessories

4 Magna Power 12v AGM Battery (New 12/2017)

3 Northstar NSB-AGM 31M Battery (New 12/2017)

Magnum MS-2812 Pure Sine Wave Inverter (New 12/2017)

Magnum ME-RC50 Remote Panel (New 12/2017)

Wind Generator - Eclectic Energy D400

2 Solar Panels atop Bimini (Flexible)

Water Maker - Spectra Newport 400 (400 gallons/day)

Washer/Dryer - Splendide

Ice maker - Icerette

New bottom paint and hull waxed 9/2017

Custom Stainless Steel Arch

Multiple Spare parts including:

1 A/C raw water pump

2 spare bilge pumps

2 shower drain pumps

1 water pressure pump

Many spare oil filters, water maker filters, fuel filters, belts, etc.

1

Entertainment

Samsung SmartVision Flat Screen TV 40 inch

1 Sony DVD Player

4 Bose Speakers in Salon

Fusion Exterior Speakers

Exclusions

Owner's personal belongings.

Disclaimer

The Company offers the details of this vessel or yacht in good faith but cannot guarantee or warrant the accuracy of this information nor warrant the condition of the vessel. A buyer should

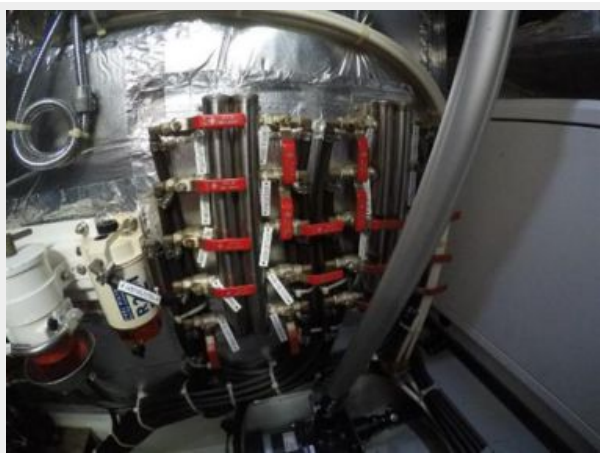
instruct his representatives, agents, or his surveyors, to investigate such details as the buyer desires validated. This vessel or yacht is offered subject to prior sale, price change, or withdrawal without notice.

PHOTOS

















CONTACTS

Andrey Shestakov, leading yacht broker of the sales department of Shestakov Yacht Sales Inc. Shestakov Yacht Sales Inc., the official representative of the Miami/Fort Lauderdale FL headquarters.

Contact details

Email: andrey@shestakovyachtsales.com

Web: shestakovyachtsales.com/en/

Telephones

USA: +1(954)274-4435

Office hours

Monday – Saturday: **9:00 - 21:00** EDT

Sunday: **closed**

Address



Harbour Towne Marina, 850 NE 3rd St,
STE 213, Dania, FL 33004