

31 1997 MAINSHIP 31 — MAINSHIP



Builder: MAINSHIP

Year Built: 1997

Model: Cruiser

Price: PRICE ON APPLICATION

Location: United States

LOA: 31' 0" (9.45m)

Beam: 11' 10" (3.61m)

Max Draft: 2' 10" (0.86m)

Cruise Speed: 17.37952484 Kts. (20 MPH)

Max Speed: 26.06928726 Kts. (30 MPH)

Our experienced yacht broker, Andrey Shestakov, will help you choose and buy a yacht that best suits your needs 31 1997 Mainship 31 — MAINSHIP from our catalogue. Presently, at Shestakov Yacht Sales Inc., we have a wide variety of yachts available on our sale's list. We also work in close contact with all the big yacht manufacturers from all over the world.

If you would like to buy a yacht 31 1997 Mainship 31 — MAINSHIP or would like help answering any questions concerning purchasing, selling or chartering a yacht, please call +1(954)274-4435

TABLE OF CONTENTS

TABLE OF CONTENTS	2
SPECIFICATIONS	3
Overview	3
Basic Information	3
Dimensions	3
Speed, Capacities and Weight	3
Accommodations	3
Hull and Deck Information	4
Engine Information	4
DETAILED INFORMATION	5
Information	5
Exclusions	6
Disclaimer	7
PHOTOS	8
CONTACTS	19
Contact details	19
Telephones	19
Office hours	19
Address	19

SPECIFICATIONS

Overview

This 1997-Mainship 31 Sedan Bridge is in very nice condition throughout and is fully equipped and ready to go cruising today! She is powered by Twin 350ci/298 hp Freshwater Cooled Marine Power EFI Inboard Engines. The vessel sleeps 6, has a head, shower, complete galley, large cockpit with seating and a roomy flybridge for the Captain and guests. Take a look at this great family vessel and you will want to be the Proud New Owner!

Basic Information

Category: Cruiser

Sub Category: Sedan Cruiser

Model Year: 1997

Year Built: 1997

Country: United States

Dimensions

LOA: 31' 0" (9.45m)

Beam: 11' 10" (3.61m)

Max Draft: 2' 10" (0.86m)

Clearance: 14' 4" (4.37m)

Speed, Capacities and Weight

Cruise Speed: 17.37952484 Kts. (20 MPH) **Max Speed:** 26.06928726 Kts. (30 MPH)

Displacement: 16000 Pounds

Water Capacity: 50 Gallons

Holding Tank: 30 Gallons

Fuel Capacity: 200 Gallons

Accommodations

Total Cabins: 1

Total Berths: 6

Total Heads: 1

Hull and Deck Information

Hull Material: Fiberglass

Hull Configuration: Deep Vee

Engine Information

Engines: 2

Manufacturer: Marine Power

Model: 350c.i. EFI-FW Cooled

Engine Type: Inboard

Fuel Type: Gas

DETAILED INFORMATION

Information

Manufacturer Provided Description The Mainship 31 Sedan Bridge features a large, uncluttered flybridge with plentiful seating and storage. Wide molded fiberglass steps replace the standard ladders on the 31, offering safety and comfort. Bridge walk-throughs along with oversize handrails and raised toe rails add to safety. Belowdecks are custom cabinetry, thick pile carpeting and the finest in fabrics. Spacious salons, workable galleys, easy to maintain heads and truly comfortable staterooms are incorporated to provide good flow and the most usable space afloat. Mainship motor yachts, part of the Luhrs marine group, is dedicated to bringing the best in design, comfort safety and reliability. Mainship's manufacturing processes include fabrication on-site of many components such as hard tops, rails, furniture and wiring, providing high-quality prompt delivery and a lower price at the dealer. Mainship's five-year protection plan is one of the best in the industry including a transferable limited hull warranty.

Accommodations and Layout

Highlights of this layout is a very spacious salon with an L-shaped combination lounge and settee that converts to sleep two guests, double-entry head and shower compartment, two private staterooms, master forward with queen berth and guest stateroom to port with double bunks. The galley is along the port side and is fully equipped. The large flybridge has seating for 6-8 captain and guests and has a walk-through gate for easy access to the bow, bow seating seats up to 4 guests. The large cockpit provides easy access to the engine compartment and has side seating port and starboard for 4 guests and makes a great area for fishing as well. There are molded-in fiberglass steps to the bridge from the cockpit and a cockpit stern door to swim platform.

Galley

- Norcold Refrigerator/freezer
- Princess 2-Burner Electric Cooktop
- Sunbeam Microwave Oven
- Stainless Steel Sink
- Coffee Maker
- Toaster

Electronics

- B & G Auto Pilot
- Ritchie Compass
- B & G Depth Sounder
- Standard Horizon VHF Radio
- New Simrad Go7 GPS/Chart Plotter

- 13" Flat-Screen TV with DVD
- New Bluetooth AM/FM/iHeart Radio.Sirius In Salon W/4 New Speakers
- New Bluetooth AM/FM/Stereo With 4 New Speakers On Bridge

Deck Equipment

- Stainless Steel Plow Anchor With 10' Chain
- Anchor Windlass
- Fortress Stern Anchor
- Bow Pulpit and Rails
- Fenders and Lines
- Spreader Light
- Radar Arch W/4 Rod Holders
- Swim Platform and Ladder
- Bimini Top
- Helm and Helm Seat Canvas Covers

Electrical System

- 3-Group 27 Batteries (2-New August 2018)
- ProSport Automatic Battery Charger
- 2-Battery Switches
- Kohler GenSet (Needs Motherboard)
- 30 Amp Shore Power Cables

Engine and Mechanical Details

- 2 Marine Air/Heat Systems
- Bilge Blower
- 2- Bilge Pumps
- Electric Head
- Hydraulic Steering
- Trim Tabs
- ENGINE UPDATES: All New Intake Hoses, New Wet Exhaust Hoses and Stainless Steel Hose Clamps, New Risers and Manifolds, New Spark Plugs and Fresh Oil and Filters Change 15 hours Ago.

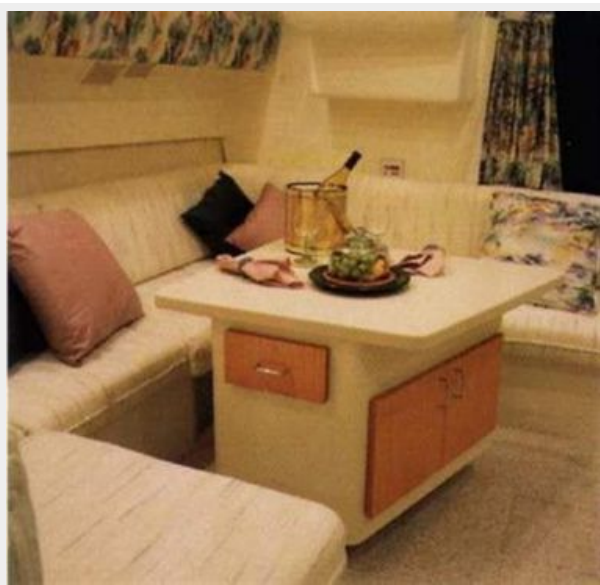
Exclusions

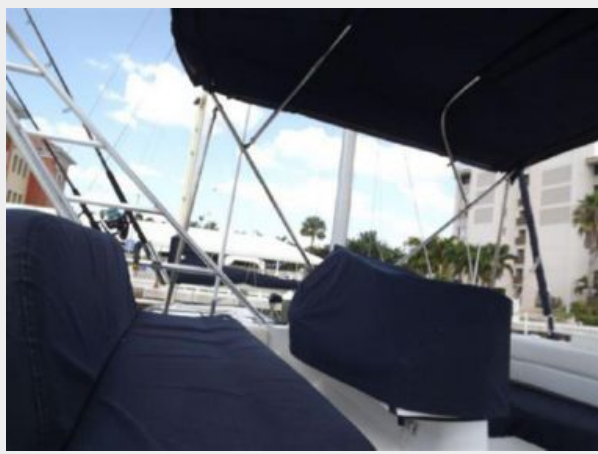
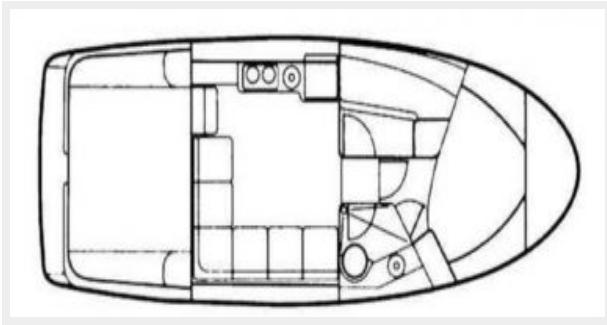
Owner's personal belongings.

Disclaimer

The Company offers the details of this vessel or yacht in good faith but cannot guarantee or warrant the accuracy of this information nor warrant the condition of the vessel. A buyer should instruct his representatives, agents, or his surveyors, to investigate such details as the buyer desires validated. This vessel or yacht is offered subject to prior sale, price change, or withdrawal without notice.

PHOTOS

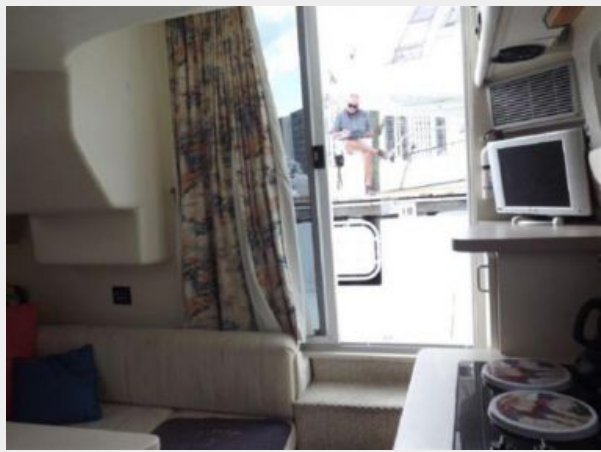




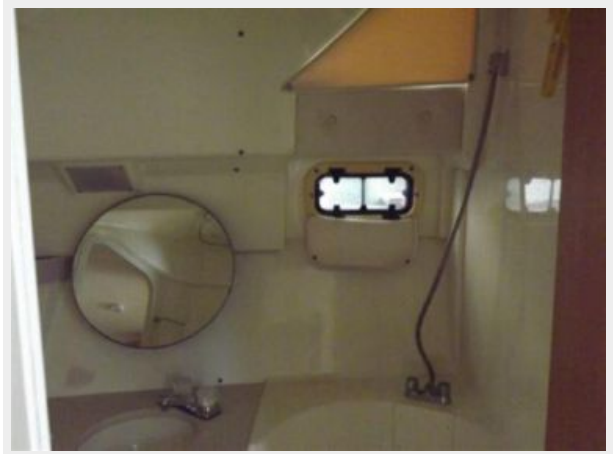
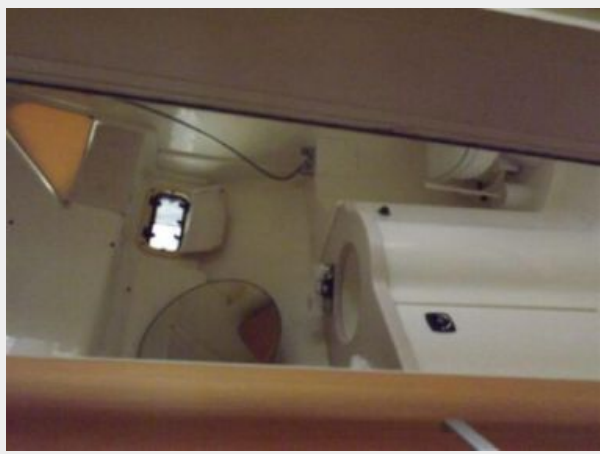
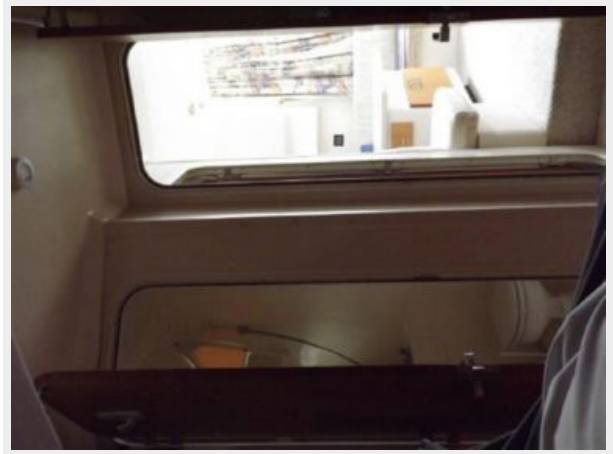


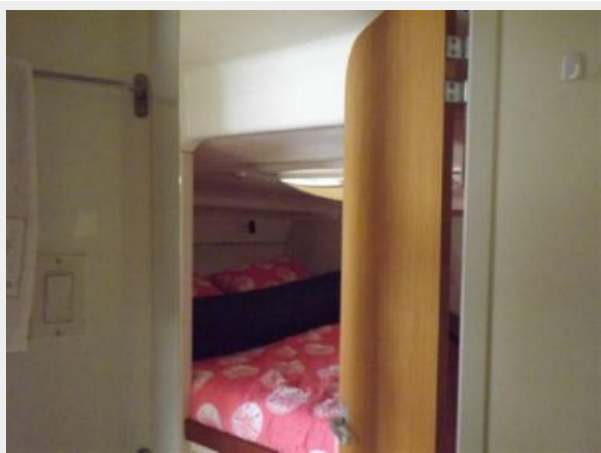














CONTACTS

Andrey Shestakov, leading yacht broker of the sales department of Shestakov Yacht Sales Inc. Shestakov Yacht Sales Inc., the official representative of the Miami/Fort Lauderdale FL headquarters.

Contact details

Email: andrey@shestakovyachtsales.com

Web: shestakovyachtsales.com/en/

Telephones

USA: +1(954)274-4435

Office hours

Monday – Saturday: **9:00 - 21:00** EDT

Sunday: **closed**

Address



Harbour Towne Marina, 850 NE 3rd St,
STE 213, Dania, FL 33004