

N/A — BENETTI



Builder: BENETTI

Year Built: 2012

Model: Motor Yacht

Price: PRICE ON APPLICATION

Location: Italy

LOA: 105' 0" (32.00m)

Beam: 7' 11" (2.41m)

Max Draft: 1' 11" (0.58m)

Cruise Speed: 12 Kts. (14 MPH)

Max Speed: 15 Kts. (17 MPH)

Our experienced yacht broker, Andrey Shestakov, will help you choose and buy a yacht that best suits your needs N/A — BENETTI from our catalogue. Presently, at Shestakov Yacht Sales Inc., we have a wide variety of yachts available on our sale's list. We also work in close contact with all the big yacht manufacturers from all over the world.

If you would like to buy a yacht N/A — BENETTI or would like help answering any questions concerning purchasing, selling or chartering a yacht, please call +1(954)274-4435

TABLE OF CONTENTS

TABLE OF CONTENTS	2
SPECIFICATIONS	3
Overview	3
Basic Information	3
Dimensions	3
Speed, Capacities and Weight	4
Accommodations	4
Hull and Deck Information	4
Engine Information	4
DETAILED INFORMATION	5
ACCOMMODATION	5
NAVIGATION AND ELECTRONICS	5
ENTERTAINMENT EQUIPMENT	6
INSIDE EQUIPMENT	6
GALLEY EQUIPMENT	6
ELECTRICAL EQUIPMENT	7
OUTSIDE EQUIPMENT / EXTRAS	7
COVERS	8
TENDERS	8
Exclusions	8
Disclaimer	8
PHOTOS	9
CONTACTS	16
Contact details	16
Telephones	16
Office hours	16
Address	16

SPECIFICATIONS

Overview

The BENETTI 105 TRADITION is a 32-meter super-yacht featuring all the characteristics of a mega yacht, blending tradition with innovation.

This BENETTI 105 TRADITION was delivered in the early 2012 and is presently in amazing condition and few hours for a displacement yacht.

One of a kind, its compact dimensions and well-designed layout of the BENETTI 105 TRADITION, features design solutions, technical equipment and practical, comfortable spaces typical of much larger yachts.

She also features three and a half decks; however the sundeck being very large and practical, it guarantees the same comfort as a whole deck.

This tri-deck yacht is stabilized and has a permanent crew providing professional maintenance, viewings are highly recommended.

Basic Information

Category: Motor Yacht

Model Year: 2012

Year Built: 2012

Country: Italy

Fly Bridge: Yes

Dimensions

LOA: 105' 0" (32.00m)

Beam: 7' 11" (2.41m)

Max Draft: 1' 11" (0.58m)

Speed, Capacities and Weight

Cruise Speed: 12 Kts. (14 MPH)

Max Speed: 15 Kts. (17 MPH)

Displacement: 352739.6192 Pounds

Water Capacity: 3500 Gallons

Fuel Capacity: 21500 Gallons

Accommodations

Total Cabins: 5

Total Heads: 6

Crew Cabin: 3

Crew Sleeps: 5

Crew Heads: 3

Hull and Deck Information

Hull Material: Fiberglass

Engine Information

Engines: 2

Manufacturer: Caterpillar

Model: C18 ACERT

Engine Type: Inboard

Fuel Type: Diesel

DETAILED INFORMATION

ACCOMMODATION

- Number of cabins: 5
- Number of guest bathrooms: 6
- Accommodation for Owner & Guests: 10 persons in 5 cabins
- Guest cabin configuration:
 - Master cabin on main deck with ensuite facility
 - 2 x VIP Double cabins on lower deck with ensuite facilities
 - 2 x Twin guest cabins on lower deck with ensuite facilities
 - Day head on main deck
- Accommodation for Crew: 5 persons in 3 cabins
- Crew bathrooms: 3

NAVIGATION AND ELECTRONICS

- Navigation Upgrades to standard (excluding nightvision)
- Gyro Compass 1 x Plath Navigat XMKII
- Magnetic Compass 1 x Plath (180 mm diameter)
- Echo Sounder 1 x Furuno
- Log-speedometer 1 x Furuno
- Autopilot 1 x Navipilot
- VHF
- Radar Detector
- VCR
- Navigation center
- Radar FURUNO 1954 X BAND 72 Nautical Miles
- GPS
- GPRS phone
- SSB 1 x Sailor
- Navtex 1 x Navtex system
- PABX RX-TDA30
- SAT COM
- 1 x V-sat
- 1 x Inmarsat C
- Computer
- Radio
- Wind speed and direction
- Plotter
- Depthsounder
- Repeater(s)

ENTERTAINMENT EQUIPMENT

- BEST (Benetti Exclusive Sea Technology) integrated System for Audio/Video (with main server, local server and accessories)
- DOMOTIC integrated with BEST
- Blu-ray
- CCTV Remote function
- Master and secondary I-Pad to control the above
- Upgrade internal speakers to B&W
- Additional screens
- Cockpit speakers
- Upper deck speakers
- Sundeck speakers
- DVD players in saloon, upper deck and all cabins
- CD players in saloon, upper deck and all cabins
- TV sets in saloon, upper deck and all cabins
- Satellite TV system
- Upgraded sound system throughout

INSIDE EQUIPMENT

- Air conditioning
- Bow thruster
- Stern thruster
- Sea water pump
- Fresh water maker: 1 x Reverse osmosis Idromar 320 l/h
- Hot water
- Air compressor
- Marine head
- Electric bilge pump
- Manual bilge pump
- Battery charger
- Black water tank
- Grey water tank

GALLEY EQUIPMENT

- Oven
- Dishwasher
- Refrigerator
- Deep freezer
- Microwave oven

- Washing machine
- Ice box
- Ice maker
- Stove
- Cooking plates
- Extractor
- Sinks
- Garbage compactor
- Coffee machine

ELECTRICAL EQUIPMENT

- Generators: 2 x Kohler 50 kW, 230VAC, 3ph, 50 Hz (1500 hrs Oct 2010)
- Electrical System: 230 VAC / 3 phase / 50 Hz system and 24 VDC system
- Boiler s: 2 x Electric hot water stainless steel (120 liters each)
- Inverter
- Shore power inlet
- Battery charger

OUTSIDE EQUIPMENT / EXTRAS

- Stabilizers: VT Naiad Marine Hydraulic system
- 2 x Windlasses
- 2 x Anchors
- Davits
- Jacuzzi on sundeck
- Teak cockpit
- Teak sidedecks
- 2 x Mooring winches
- Liferaft
- Cockpit shower
- Wind generator
- Cockpit table
- Radar reflector
- Solar panel
- Cockpit cushions
- Swim platform
- Swimming ladder
- Hydraulic gangway
- Lazarette
- Tender garage fitting tender and jet-ski

COVERS

- Winterizing covers
- Bimini Top

TENDERS

- Tender: Williams 445 turbo diesel
- Jet Ski: KAWASAKI STX-15

Exclusions

Owner's personal belongings.

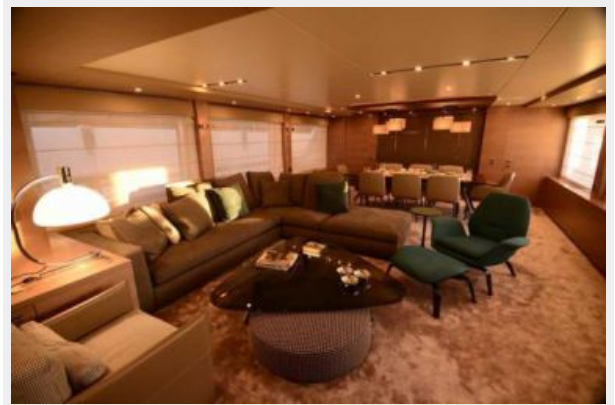
Disclaimer

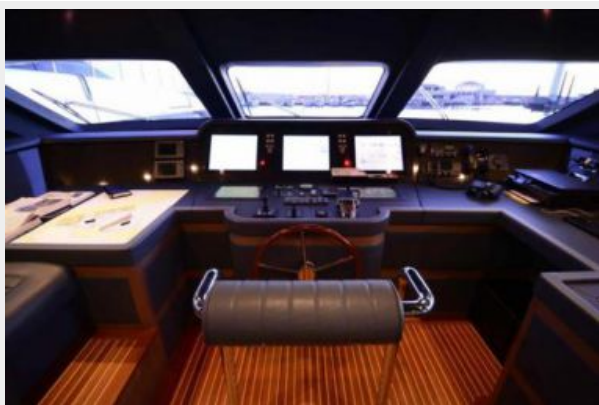
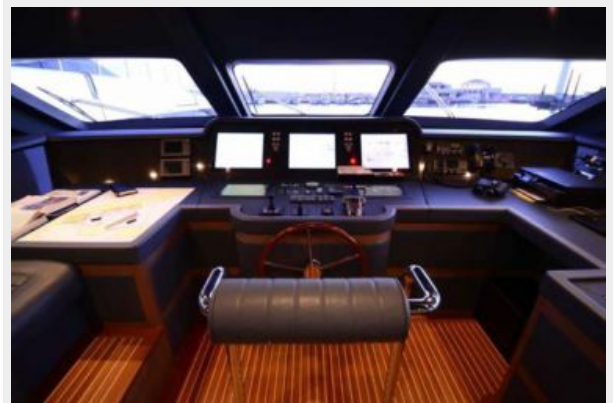
The Company offers the details of this vessel or yacht in good faith but cannot guarantee or warrant the accuracy of this information nor warrant the condition of the vessel. A buyer should instruct his representatives, agents, or his surveyors, to investigate such details as the buyer desires validated. This vessel or yacht is offered subject to prior sale, price change, or withdrawal without notice.

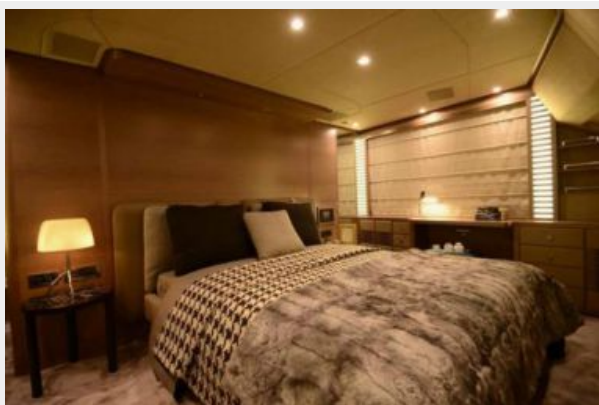
PHOTOS



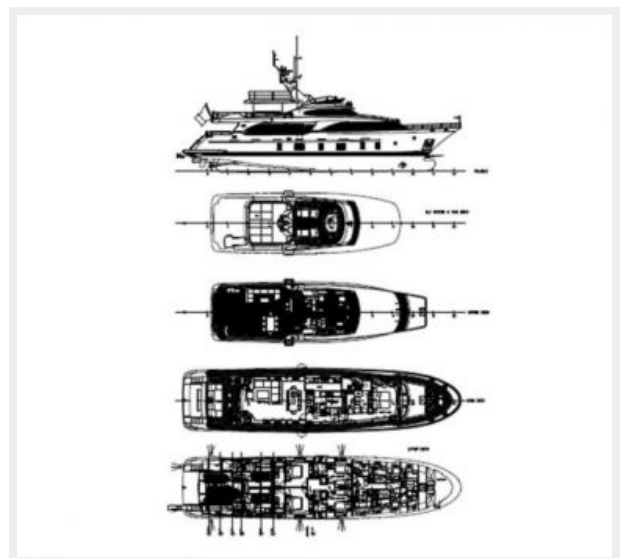
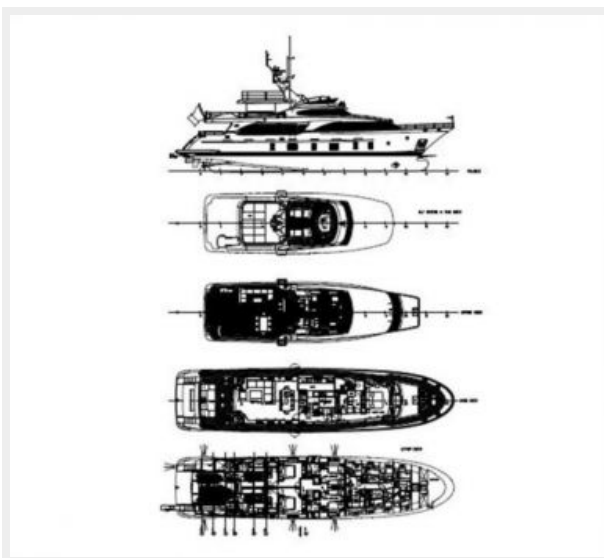
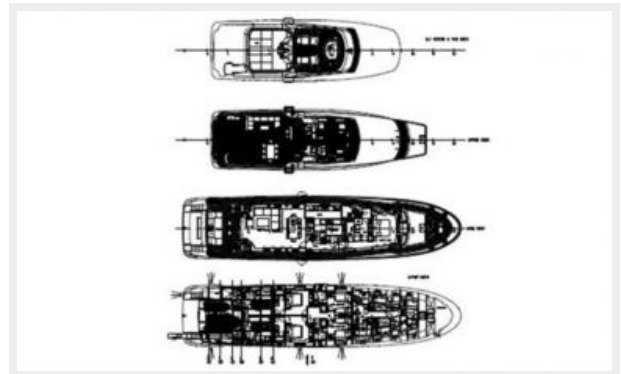
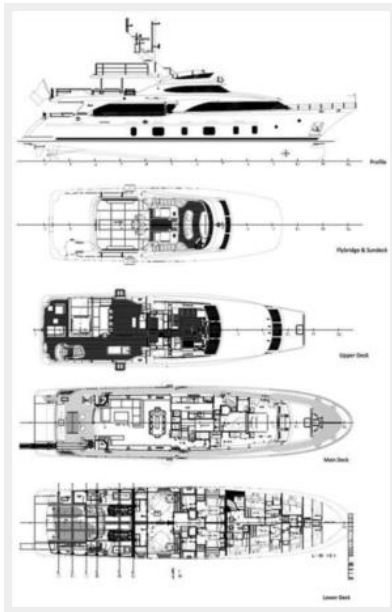
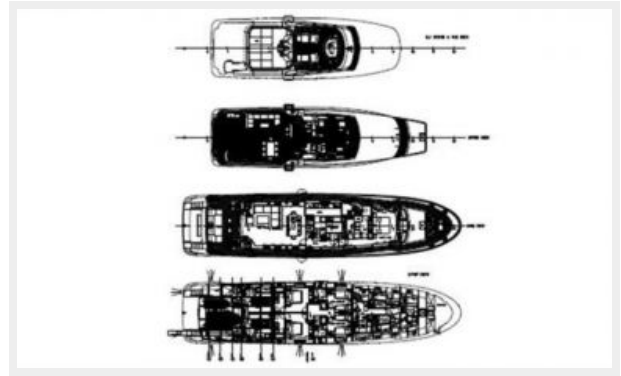












CONTACTS

Andrey Shestakov, leading yacht broker of the sales department of Shestakov Yacht Sales Inc. Shestakov Yacht Sales Inc., the official representative of the Miami/Fort Lauderdale FL headquarters.

Contact details

Email: andrey@shestakovyachtsales.com

Web: shestakovyachtsales.com/en/

Telephones

USA: +1(954)274-4435

Office hours

Monday – Saturday: **9:00 - 21:00** EDT

Sunday: **closed**

Address



Harbour Towne Marina, 850 NE 3rd St,
STE 213, Dania, FL 33004