

GRINGO HONEYMOON — VIKING



Судостроитель: VIKING

Длина общая: 50' 0" (15.24m)

Год постройки: 2012

Модель: Катер для спортивной рыбалки

Цена: ЦЕНА ЯХТЫ ПО ЗАПРОСУ

Местонахождение: United States

Купить **Gringo Honeymoon — VIKING** а также выбрать подходящую вам яхту из нашего каталога яхт вам поможет опытный яхтенный брокер Андрей Шестаков. На сегодняшний день компания **Shestakov Yacht Sales Inc.** имеет большое количество яхт в собственном списке продаж, а также тесно сотрудничает со всеми крупными яхтенными производителями по всему миру.

Для того чтобы купить яхту **Gringo Honeymoon — VIKING** а также проконсультироваться по любому вопросу связанному с покупкой, продажей, чартером яхт позвоните по телефону **+7(918)465-66-44**.

ОГЛАВЛЕНИЕ

ОГЛАВЛЕНИЕ	2
ХАРАКТЕРИСТИКИ	4
Обзор	4
Основная информация	4
Размеры	4
Размещение	4
Корпус и палуба	4
Информация о двигателе	5
ПОДРОБНОЕ ОПИСАНИЕ	6
Accommodations	6
Decor	6
Salon	6
Galley/Dinette	7
Companionway	7
Master Stateroom	7
Master Head	8
Forward Stateroom	8
Port Guest Stateroom	8
Port Guest Head	8
Flybridge	9
Cockpit/Fishing Equipment	9
Deck and Hull	10
Engine Room/Mechanical	10
Tuna Tower	11
Electronics Atlantic Marine Electronics package	11
Исключения	12
Отказ от ответственности	12
ФОТОГРАФИИ	13

DSC_0254	18
DSC_0247	23
DSC_0242	23
DSC_0261	23
DSC_0258	23
DSC_0266	23
DSC_0272	23
DSC_0293	24
DSC_0286	24
КОНТАКТЫ	25
Контактная информация	25
Телефоны	25
Время работы	25
Адрес	25

ХАРАКТЕРИСТИКИ

Обзор

Gringo Honeymoon is an original owner, well maintained 50 Viking with full PBT tower and all the right gear. The cockpit is equipped with a full teak package from deck to covering boards, a Release marine fighting chair, mezzanine seating, and all the refrigeration and fishing amenities you expect on a late model Viking. Extras include extra generator, Eskimo ice maker, 700 GPD water maker and she sports the clean no bow rail look that fits her speed and agility. Her entire career has been spent in Costa Rica and Panama building a resume of billfish catches and ensuring that she has been pampered in her care and offshore use.

Основная информация

Тип судна: Катер для спортивной рыбалки

Подкатегория: Convertible

Модельный год: 2012

Год постройки: 2012

Страна: United States

Номер регистрации в береговой охране: 1237546

Верх: Full / Tuna Tower

Открытая палуба мостика: Да

Кубрик: Да

Размеры

Длина общая: 50' 0" (15.24m)

Размещение

Всего кают: 3

Всего ком. состава: 2

Корпус и палуба

Материал корпуса: Fiberglass

Информация о двигателе

Двигатели: 2

Производитель: MAN

Модель: V12

Тип двигателя: Inboard

Тип топлива: Diesel

ПОДРОБНОЕ ОПИСАНИЕ

Accommodations

Sleeps six owners and guests in three staterooms with a total 5 berths. One Master Head with shower, one Guest Head with shower. Step into Salon from starboard side of the Cockpit to find a tastefully decorated Salon with satin teak finish, Island Galley with bar stools, large L-shaped sofa with coffee table and a dinette forward. Step down the Companionway to the comfortable Master Stateroom to starboard with en-suite Head. Guest Stateroom to port and forward share the co-joined Guest Head.

Decor

- Satin finish
- Prestige Décor
- Accessory Package
- Teak valances
- Brushed nickel interior hardware
- Wrapped hatch carpeting
- Viking “Sunbrella” mezzanine
- Amtico flooring
- Ultra-Leather sofa
- Covers for tables and counter tops, salon, galley, dinette

Salon

- Air conditioning with reverse cycle heat
- Air flow thru concealed registers behind valances
- Electric Panel down
- L shaped ultra-leather sofa with storage
- 2 bar stools at island counter
- Viking Home theater
- Cocktail table
- Teak top on entertainment center
- Dimmers for quartz lights
- Teak in place of mirror on aft side of Galley
- Teak wire box
- Teak trim where Amtico meets carpet

- Amtico floor at entranceway
- Teak valances
- 37" Flat screen TV
- Full canvas carpet runner

Galley/Dinette

- Island galley counter top
- Corian Clam shell counter tops
- L shaped main galley counter
- High polished Corian countertops
- Custom Amtico flooring
- 3 burner recessed range
- Under counter refrigeration – drawers
- Chrome faucet
- Galley overhang
- Teak dinette table with teak pedestal
- Storage under dinette seating

Companionway

- Costa, canvas carpet runner with step covers
- Awlgrip bilges
- Central vacuum system
- Bilge access

Master Stateroom

- Located to starboard
- Queen fore and aft bed with system 3 mattress upgrade
- Storage below lift up bed
- Teak entry credenza
- Dimmers on overhead lights
- 22" flat screen TV
- Maple lined hanging locker
- Air conditioning / reverse cycle heat
- Credenza to starboard
- Bank of 4 drawers at entrance to stateroom
- Hardwired night stand lamps
- Reading lights
- Custom headboard

- Custom wall covering

Master Head

- Teak face on lower vanity
- Custom Amtico flooring
- Mirror in place of wallpaper around vanity
- Brushed aluminum shower door
- Satin nickel shower fixtures
- Corian counter tops with bone sink

Forward Stateroom

- Upper and lower berths
- 19" Flat screen TV
- Dimmers for overhead lights
- Custom wall covering
- Hanging locker to starboard
- Storage below lower bunk
- Stereo system w/ speakers
- Air conditioning / reverse cycle heat

Port Guest Stateroom

- Over under bunks
- Teak locker top
- Mattress upgrade to system 1
- Drawer below lower berth
- Stereo system w/speakers
- Air conditioning / reverse cycle heat
- Laundry center – washer/dryer

Port Guest Head

- Exhaust fan vent in shower
- Custom Amtico flooring
- Sealand head system
- Cambria vanity top
- Custom wallpaper
- Chrome shower door

- Lower teak faced vanity

Flybridge

- Palm Beach Tower custom hardtop with molded in quartz lights
- 3-sided enclosure, Costa Clear with air vents front panel
- Murray Brothers custom teak helm chairs with polished stainless pedestals and teak footrests
- Custom Release Marine teak helm pod
- Single lever electronic controls
- Polished stainless steering wheel
- Insulated drink box
- Removable jump seat with backrest
- L-shaped seating forward of helm with storage below
- Starboard bench seat with storage below
- Storage forward in the brow cabinet
- Electric teaser reels EPOCH US 9 recessed in hardtop
- Drop down radio boxes at helm console
- Recessed electronics boxes
- Push button catches for electronics box lid
- Gas springs on electronics box lids
- Electronic trolling valves
- MAN digital displays
- Fly bridge stereo with speakers
- Freshwater wash down outlet
- 6 rod holders on aft rail

Cockpit/Fishing Equipment

- Full teak package including deck, mezzanine, gunnels and covering boards
- 4 Ocean LED underwater lights (2 out transom, 2 down hull bottom)
- Covers for teak covering boards
- Fore and aft cockpit fish boxes
- Cockpit mezzanine step and seating
- Freezer below mezzanine with dividers
- Refrigerated drink box
- Live well in sole
- Pump and fittings for on deck tuna tubes
- Transom tuna door and gate
- Center rigger
- Rupp outriggers
- Eskimo ice chipper

- Release Marine Tuna Chair
- Teak seat upgrade on chair
- 4 hole chair launcher with drawer on back of chair
- Cover for fighting chair
- 3 rod holders each tower leg
- Fresh and saltwater wash downs with Y valve
- Dockside electric and water cabinets
- Tackle cabinet with 4 drawers to starboard
- Insulated bait prep box in mezzanine
- Awlgrip painted lazette
- Cockpit covers

Deck and Hull

- Snow white hull sides
- Oval exhaust outlets (linear)
- Prop pockets
- Fresh water wash down in anchor locker
- Side mounted hand rails following window lines
- Additional fuel tank forward (total of 3 tanks)
- No bow pulpit
- No bow rail
- Bow cleats fore and aft
- Salon forward window mask
- Fiberglass side thru hulls
- Black Boot Stripe
- Black bottom paint
- Awlgrip anchor locker
- Recessed trim tab covers

Engine Room/Mechanical

- Twin 1360 hp. Diesel I/B 2012 MAN V-12's
- 21.5 Onan generator
- Additional 9Kw generator
- 700 GPD water maker
- Eskimo ice maker
- (2) Bilge blowers
- Fuel system priming pumps
- Oil pressure alarm
- Oil change system plumbed to cockpit dockside inlet
- Generator Gas-water separator

- 110 outlet on aft bulkhead
- Sea strainers in engine room and fwd bilges
- Awlgrip brass thru hulls and sea strainers
- Fuel filters snow white
- Tee in dockside water to fill water tank from cockpit
- Magnetic switches for all bilge lights
- Fire control system
- Fresh water cooling
- Engine synchronizers
- Engine fuel shut-off valve
- Hydraulic, wheel steering
- Engine temperature alarm
- (3) Automatic, manual bilge pumps
- Delta T cooling vents
- Hot water heater

Tuna Tower

- 6' Gap, Brushed pipe Palm Beach Tuna Tower
- Molded 2 in 1 Lumitec LED spreader light pod
- Molded single Lumitec Led light pod fwd platform
- Molded tower sun shade
- Seat with back rest
- Sat TV dome
- Outrigger lockdowns
- Recessed tri-color lights in tower sunshade
- Recessed tri-color lights in platform

Electronics Atlantic Marine Electronics package

- Furuno Radar/NavNet 3d 12KW
- Furuno NavNet multi-function display
- Garmin 5212 Plotter with 12" touchscreen display
- Furuno NavNet DFF3 3D sounder
- Furuno RD33 Data display
- Simrad Auto pilot
- 2 Icom IC-M604 VHF radios
- Garmin Plotter 8.4" display in tower
- Icom command mic in tower
- KVH Tracphone
- Fusion MS-lp600 Stereo with Ipod dock
- Samsung BluRay player in salon and master

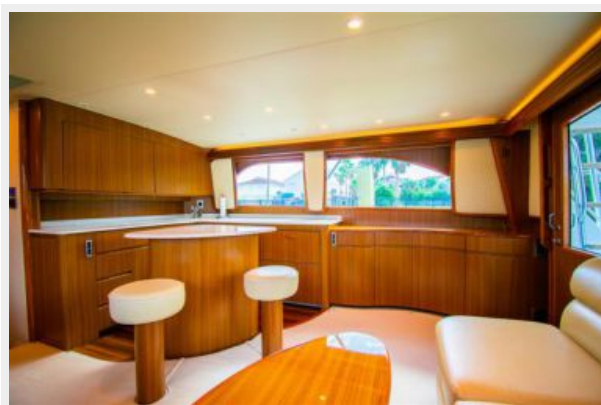
Исключения

При продаже яхты исключаются личные вещи владельца.

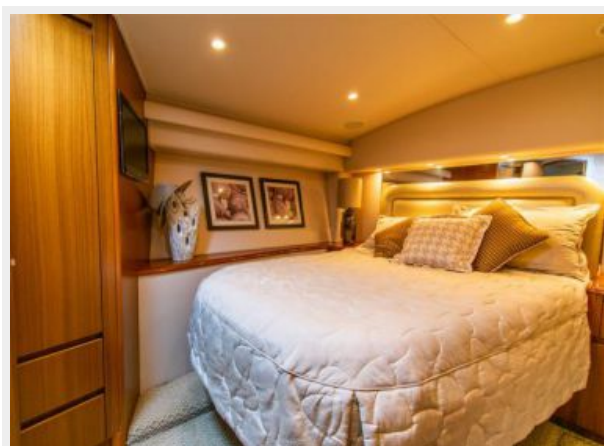
Отказ от ответственности

Компания предоставляет описание судна или яхты добросовестно, но не может гарантировать точность этой информации, а также не ручается за техническое состояние. Покупатель должен проинструктировать своих агентов или оценщиков исследовать представленную информацию более подробно, по собственному желанию. Продажа судна или яхты, изменение цены или снятие с продажи будет происходить без предварительного уведомления.

ФОТОГРАФИИ

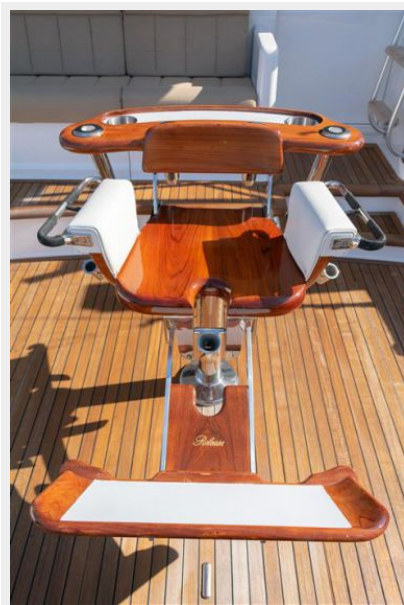






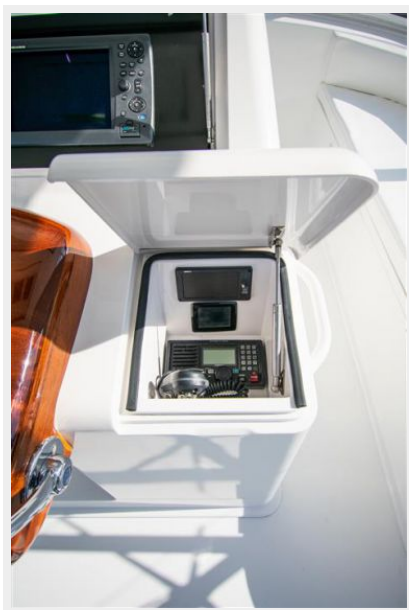




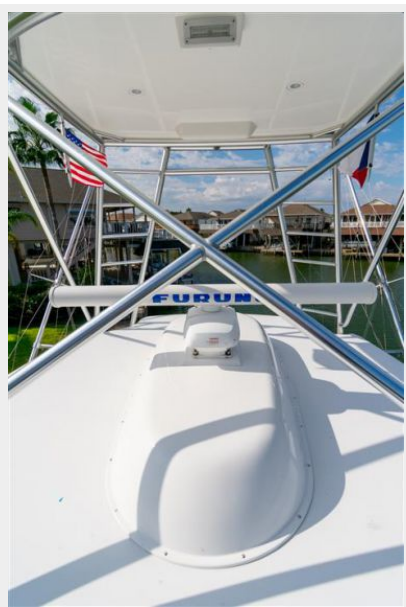
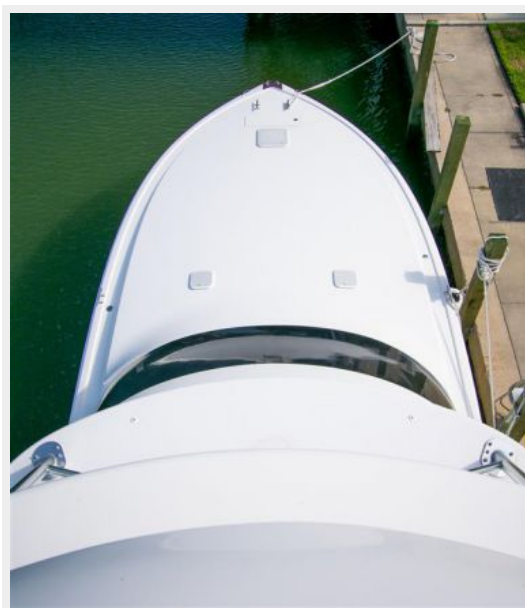


DSC_0254











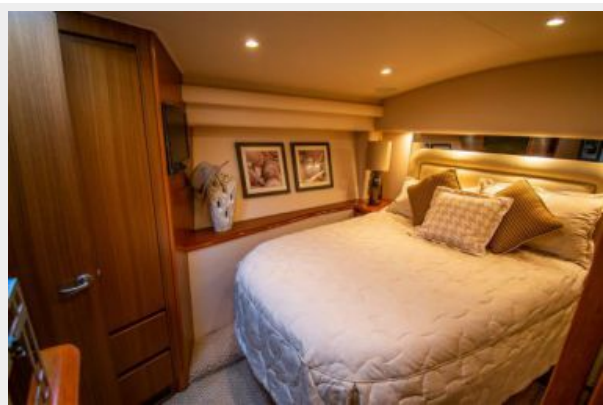
DSC_0242



DSC_0247



DSC_0258



DSC_0261



DSC_0266



DSC_0272



DSC_0286



DSC_0293



КОНТАКТЫ

Андрей Шестаков (Andrey Shestakov) – ведущий яхтенный брокер отдела продаж яхт и судов компании Shestakov Yacht Sales Inc. Официальный представитель Shestakov Yacht Sales Inc. для русскоговорящих клиентов в центральном офисе компании в Майами/Форт Лодердейл/Флорида/США.

Контактная информация

Email: andrey@shestakovyachtsales.com

Web: shestakovyachtsales.com

Телефоны

Краснодарский край: **+7(918)465-66-44**

США, Майами, Флорида: **+1(954)274-4435**

Время работы

Понедельник – Суббота: **9:00 - 21:00**
EDT

Воскресенье: **Закрето**

Адрес



Harbour Towne Marina, 850 NE 3rd St,
STE 213, Dania, FL 33004