

28 1985 O'DAY 28 MASTHEAD SLOOP — O'DAY



Builder: O'DAY

Year Built: 1985

Model: Cruising Sailboat

Price: PRICE ON APPLICATION

Location: United States

LOA: 28' 0" (8.53m)

Beam: 10' 3" (3.12m)

Max Draft: 4' 8" (1.42m)

Our experienced yacht broker, Andrey Shestakov, will help you choose and buy a yacht that best suits your needs 28 1985 O'Day 28 Masthead Sloop — O'DAY from our catalogue. Presently, at Shestakov Yacht Sales Inc., we have a wide variety of yachts available on our sale's list. We also work in close contact with all the big yacht manufacturers from all over the world.

If you would like to buy a yacht 28 1985 O'Day 28 Masthead Sloop — O'DAY or would like help answering any questions concerning purchasing, selling or chartering a yacht, please call +1(954)274-4435

TABLE OF CONTENTS

TABLE OF CONTENTS	2
SPECIFICATIONS	4
Overview	4
Basic Information	4
Dimensions	4
Speed, Capacities and Weight	5
Accommodations	5
Hull and Deck Information	5
Engine Information	5
DETAILED INFORMATION	6
Features	6
Exclusions	8
Disclaimer	8
PHOTOS	9
Rearview w Canvas and Mesh	9
Cockpit Entry	9
Port Side Canvas and Mesh	9
Cockpit	9
New Roller Furling	10
Topside	10
Bimini Top	10
Up Mast	10
Engine Panel	10
Winch	10
Winch	11
Bilge	11
Interior From Entry	11
New Bilge Pump	11

V-Berth	11
Starboard Interior	11
Port Interior	12
Cabin Sole	12
Underway	12
Topside	12
Engine Panel	12
New Barrier Coat and New SS Shaft	12
New Bottom Paint, No Blisters	13
New Bottom Paint, No Blisters	13
New Bottom Paint, No Blisters	13
New Bottom Paint, No Blisters	13
New Bottom Paint, No Blisters	13
New Bottom Paint, No Blisters	14
New Bottom Paint, No Blisters	14
New Bottom Paint, No Blisters	14
New Bottom Paint, No Blisters	14
CONTACTS	15
Contact details	15
Telephones	15
Office hours	15
Address	15

SPECIFICATIONS

Overview

PRICE REDUCED!!

Excellent Shape Inside and Out!! .. Too Many New Items to List on this Overview Page. See Full Specs. Boat will not disappoint, Sellers are Moving and Motivated.

Always updated and very well maintained. Seller has just got done cruising this boat and has placed it in storage for it's new owner. Contact us today!

LED Lighting

New Jabasco Head

GPS Chart Plotter

Auto Pilot

Re-Bedded Deck Hardware

Universal Diesel Engine

Brand New Bottom Paint

Basic Information

Category: Cruising Sailboat

Sub Category: Sloop

Model Year: 1985

Year Built: 1985

Country: United States

Dimensions

LOA: 28' 0" (8.53m)

LWL: 22' 9" (6.93m)

Beam: 10' 3" (3.12m)

Max Draft: 4' 8" (1.42m)

Clearance: 40' 6" (12.34m)

Speed, Capacities and Weight

Displacement: 7300 Pounds

Water Capacity: 25 Gallons

Holding Tank: 15 Gallons

Fuel Capacity: 18 Gallons

Accommodations

Total Cabins: 1

Total Berths: 5

Total Heads: 1

Hull and Deck Information

Hull Material: Fiberglass

Engine Information

Engines: 1

Manufacturer: Universal

Model: 12

Engine Type: Inboard

Fuel Type: Diesel

DETAILED INFORMATION

Features

Electronics Navigation center VHF Radio Depthsounder Compass Plotter Cockpit speakers Log-speedometer GPS Autopilot **Sails** Battened mainsail Furling genoa **Rigging** Steering wheel Spinnaker pole **Inside Equipment** Manual bilge pump Refrigerator Electric bilge pump Battery charger Marine head **Electrical Equipment** Shore power inlet **Outside Equipment/Extras** Cockpit cushions Swimming ladder **Covers** Bimini Top

Exterior Accommodations

Cockpit Cushions

New Engine Panel

New Bimini Top, New Stainless Steel Frame

Mesh Screens

30 Lbs. CQR Anchor

22 Lbs. Danforth Anchor

No Blisters

Barrier Coated

All Deck Hardware Has Been Re-bedded

Interior Accommodations

V-Berth

Port and Starboard Settee

Convertible Dinette

Enclosed Head Compartment w New Jabasco Flushing Toilet and Fresh Water Shower

Galley w 2 Burner Alcohol Stove

All New LED Lighting

Mechanical

Universal 10 HP Diesel Engine - Unkown Hours

New Stainless Steel Shaft

New Drip less Shaft Seal

New Fuel Filters

New Oil

New Oil Filter

New Water Pump

New Fresh Water Pump

Electronics

Garmin 740S GPS and Chart Plotter

New VHF Radio

Auto Pilot

New Instrument Panel w All New Gauges

Stereo System w 2 Speakers

Electric

New Pro Charge Battery Charger

4 Group 27 Batteries

All Lighting is now LED

Hot Water Heater Removed

30 Amp Shore Power

Sails, Rigging

I 36'

P 30'6"

J 12'1"

E 10'

Genoa is Good

Main Sail is Good

New Fore and Back Stays

New Pro Furler - Genoa Roller Furling

New Primary 2 Speed 28 Stainless Steel Winches

New Lewmar 8 Cabin Top Winch

New Mainsail Cover

Blooper w Whisker Pole

New Main Halyard

New Genoa Halyard

New Genoa Sheet

New Main Sheet

2- New Anderson 28 Winches

2- New Lewmar Winches

Exclusions

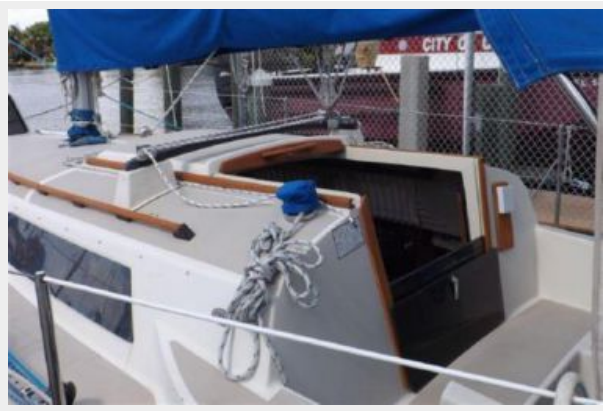
Owner's personal belongings.

Disclaimer

The Company offers the details of this vessel or yacht in good faith but cannot guarantee or warrant the accuracy of this information nor warrant the condition of the vessel. A buyer should instruct his representatives, agents, or his surveyors, to investigate such details as the buyer desires validated. This vessel or yacht is offered subject to prior sale, price change, or withdrawal without notice.

PHOTOS

Cockpit Entry



Rearview w Canvas and Mesh



Port Side Canvas and Mesh



Cockpit



Topside



New Roller Furling



Bimini Top



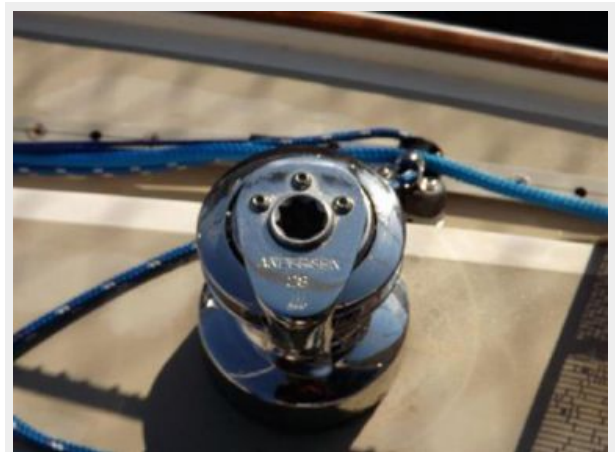
Up Mast



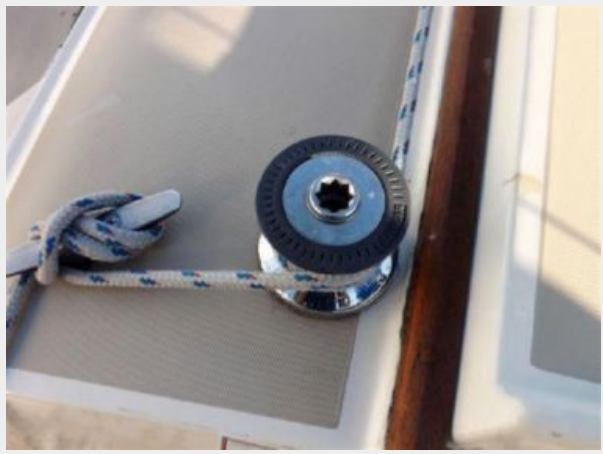
Engine Panel



Winch



Winch



Bilge



New Bilge Pump



Interior From Entry



V-Berth



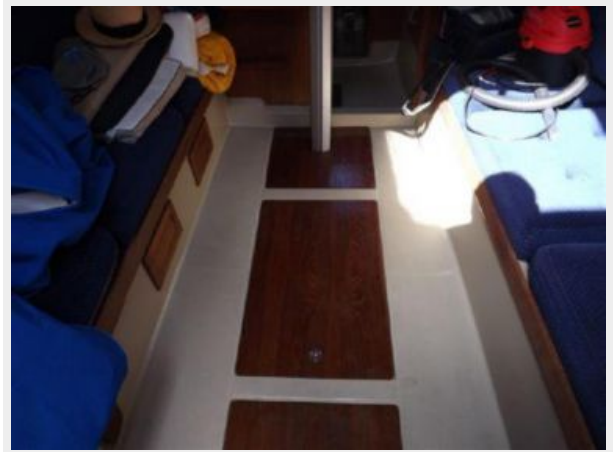
Starboard Interior



Port Interior



Cabin Sole



Underway



Topside



Engine Panel



New Barrier Coat and New SS Shaft





New Bottom Paint, No Blisters



New Bottom Paint, No Blisters



New Bottom Paint, No Blisters



New Bottom Paint, No Blisters



New Bottom Paint, No Blisters



New Bottom Paint, No Blisters



New Bottom Paint, No Blisters



New Bottom Paint, No Blisters



New Bottom Paint, No Blisters



CONTACTS

Andrey Shestakov, leading yacht broker of the sales department of Shestakov Yacht Sales Inc. Shestakov Yacht Sales Inc., the official representative of the Miami/Fort Lauderdale FL headquarters.

Contact details

Email: andrey@shestakovyachtsales.com

Web: shestakovyachtsales.com/en/

Telephones

USA: +1(954)274-4435

Office hours

Monday – Saturday: **9:00 - 21:00** EDT

Sunday: **closed**

Address



Harbour Towne Marina, 850 NE 3rd St,
STE 213, Dania, FL 33004