

DAYBREAK — PEARSON



Судостроитель: PEARSON

Год постройки: 1989

Модель: Крейсерская яхта

Цена: **ЦЕНА ЯХТЫ ПО ЗАПРОСУ**

Местонахождение: United States

Длина общая: 27' 0" (8.23m)

Ширина: 9' 2" (2.79m)

Макс. осадка: 3' 4" (1.02m)

Купить Daybreak — PEARSON а также выбрать подходящую вам яхту из нашего каталога яхт вам поможет опытный яхтенный брокер Андрей Шестаков. На сегодняшний день компания Shestakov Yacht Sales Inc. имеет большое количество яхт в собственном списке продаж, а также тесно сотрудничает со всеми крупными яхтенными производителями по всему миру.

Для того чтобы купить яхту Daybreak — PEARSON а также проконсультироваться по любому вопросу связанному с покупкой, продажей, чартером яхт позвоните по телефону **+7(918)465-66-44**.

ОГЛАВЛЕНИЕ

ОГЛАВЛЕНИЕ	2
ХАРАКТЕРИСТИКИ	6
Обзор	6
Основная информация	6
Размеры	6
Скорость, вместимость и масса	7
Размещение	7
Корпус и палуба	7
Информация о двигателе	7
ПОДРОБНОЕ ОПИСАНИЕ	8
Features	8
Исключения	10
Отказ от ответственности	10
ФОТОГРАФИИ	11
Profile_Port Sailing	11
Profile_Stbd Bow	11
Profile_Stbd	11
Profile_Stbd Midships	11
Profile_Sistership Underbody	11
Profile_Bow & Foredeck	11
Profile_Stbd Deck & Windows	12
Profile_Aft Stbd Qtr	12
Rudder & Prop_Sistership	12
Wing Keel_Sistership	12
Cockpit 2016 Bimini & Solar Panel	12
Cockpit Custom Helm Seat	12
Cockpit_Backstay Adjuster Blocks	13
Backstay Adjuster_Johnson System	13

Cockpit Bimini & Stbd Cabin top	13
Cockpit_Aft Port Lazarette	13
Cockpit_Helm Table Down	14
Cockpit_Helm Table Up	14
Cockpit_Helm Cover	14
Lewmar ST Primary_Stbd	14
Lewmar ST Primary_Port	14
Helm Electronics & Compass	14
Companionway Line Hangers	15
Companionway Varnished Teak Hatchboards	15
Companionway Open	15
Traveler on Cabintop	15
Traveler_Adjustable	16
Lines Led Aft_Stbd Cabintop	16
Wide Sidedecks & Genoa Track	16
Cabintop & Mast Base	16
Cabintop_Looking Forward	17
Foredeck & Pulpit	17
Forward Opening Hatch	17
Sailcover & Dutchman System	17
Mast Track_Adjustable for Whisker Pole	17
Mainsail_Clean & Crispy	17
Mast Base_Forward Port	18
Mast Base_Lines Led Aft	18
Isomat Aluminum Spars	18
Anchor Locker Open	18
Fortress FX-11, Chain & Nylon Rode	18
Salon Teak & Holley Floor	18
Salon View from Companionway	19

Salon Table & New Cushions	19
Salon Table Down & V-Berth	19
Storage Under V-Berth_Port	19
Galley Sink & Stove Covered	19
Icebox Closed	19
Led Light & Brass Clock & Barometer	20
V-Berth Shelf_Stbd	20
LED Light & Deck Hatch	20
Deck Hatch Forward	20
Galley Stove Covered	21
Galley Stove Open	21
Private Aft Stateroom_Bi-Fold Teak Door	21
Private Aft SR_Door Open	21
Aft SR Double Berth	21
Aft SR_View of Cabinetry Forward	21
Aft SR Window & Storage	22
Aft SR Storage Open	22
Aft SR Storage Below	22
Aft SR Engine Cover & Shelf_Closed	22
Private Head Bifold Teak Door	23
Companionway View_Aft	23
Private Head_Door Open	23
Private Head, Vanity & Jabco Toilet	23
Private Head Shower Sump Pump	24
Private Head Vanity & Sink	24
IceBox & Nav Table Closed_Stbd	24
IceBox Open	24
6 Opening Ports	24
Westerbeke 12B Diesel Engine Under Stairs	24

Westerbeke 12B Diesel Engine Under Stairs	25
Westerbeke Diesel_Excellent Access	25
Racor Water Separator Fuel Filter	25
Westerbeke Diesel_Clean & Well-Maintained	25
Westerbeke Panel in Cockpit	25
Westerbeke Diesel Instrumentation	25
Batteries	26
Solar Panel_5W with Regulator	26
Electrical Panels & Nav Table	26
Garmin GPSMap 441S	26
Electronics at the Helm	26
Raymarine Displays in Pod at Helm	26
Ritchie Compass at Helm	27
Raymarine ST4001 WheelPilot	27
Cobra Handheld VHF Radio	27
Raymarine VHF Radio at Nav Table	27
Seaward 6 Gal. Hot Water Heater	27
Plumbing is Updated and ABYC Compliant	27
Easy Access to Through-hull Transducers	28
КОНТАКТЫ	29
Контактная информация	29
Телефоны	29
Время работы	29
Адрес	29

ХАРАКТЕРИСТИКИ

Обзор

Daybreak, a 1989 Pearson 27 Inboard Diesel Sloop is a super clean, updated, and well-maintained example of this unique and rare shallow-draft model that features a huge private aft double berth, a large head with standing headroom & a shower aft, a well-equipped Galley, plus a spacious salon and convertible V-Berth with new upholstery and an adjustable height varnished teak table that can seat your entire crew. A varnished Teak & Holly Cabin Sole and over 6' of headroom add to the feeling you are onboard a much larger vessel.

Topsides, this 27 Pearson Sloop has a 2016 Sunbrella Bimini, a 2007 Mainsail with Dutchman System, Harken Roller Furler with a 100% Jib and 135% Genoa, all lines and controls led aft to the Cockpit with Sheet Stoppers, a Solar Panel with Controller, freshly varnished teak trim, and updated Raymarine Navigation Electronics in Pods, including a Garmin Color GPSMap Chart, Raymarine Autopilot, Digital Depth, Digital Speed, VHF Radio, and Binnacle-mounted compass. Her topsides shine and the decks have stood the test of time and belie their age because of the exceptional quality of the Pearson Yachts gelcoat and craftsmanship.

The Westerbeke 12B Diesel Engine has low hours, a 2017 valve job, 2016 Alternator, new motor mounts, heat exchanger cleaned and rebuilt, stuffing box re-packed, and new belts & hoses; all in the last two years so she purrs.

Great condition and ready to go! Come take a look! You won't be disappointed!

Основная информация

Тип судна: Крейсерская яхта

Подкатегория: Sloop

Модельный год: 1989

Год постройки: 1989

Страна: United States

Размеры

Длина общая: 27' 0" (8.23m)

Длина по ватерлинии: 22' 6" (6.86m)

Длина палубы: 26' 11" (8.20m)

Ширина: 9' 2" (2.79m)

Макс. осадка: 3' 4" (1.02m)

Трапы: 38' 0" (11.58m)

Скорость, вместимость и масса

Водоизмещение: 5800 Pounds

Вместимость воды: 25 Gallons

Вместимость сточного бака: 15 Gallons **Объем топливного бака:** 10 Gallons

Размещение

Всего кают: 2

Всего коек: 2

Всего ком. состава: 1

Корпус и палуба

Материал корпуса: Fiberglass

Информация о двигателе

Двигатели: 1

Производитель: Westerbeke

Модель: 12B

Тип двигателя: Inboard

Тип топлива: Diesel

ПОДРОБНОЕ ОПИСАНИЕ

Features

Electronics Autopilot - Raymarine ST4000 WheelPilot Depthsounder - Raymarine Digital Depth Log-speedometer - Raymarine Digital Speed & Log Compass - Ritchie Powerdamp GPS - Garmin GPSMap 441S VHF - Raymarine VHF **Sails** Genoa - 135% Furling Genoa Battened mainsail Furling genoa - Harken Furler & 100% Jib **Rigging** Tiller - Emergency Tiller Steering wheel Spinnaker pole - Whisker Pole **Inside Equipment** Marine head Electric bilge pump - New in 2016 Battery charger Hot water - 6 Gal. Seaward **Electrical Equipment** Shore power inlet Electrical Circuit: 110V **Outside Equipment/Extras** Solar panel - 5W with Regulator Cockpit table **Covers** Genoa cover - Sunbrella Sun Covers on Headsails Lazyjacks - Dutchman Flaking System Bimini Top - New 2016 Mainsail cover

Accommodations and Walk-through

This is a clean, lightly used, example of the very popular 27 Pearson. She features a shallow draft wing keel among other features. Starting fully forward below is a large V-berth/dinette area with new cushions. It seats six, and by lowering the table, becomes a sleeping berth for two.

Aft of the V-Berth to port is the galley with single stainless steel sink, and two burner Origo alcohol stove. Below is storage. Across to starboard is the navigation table with hinged tabletop that accesses a large Ice Box below and the electrical panels above and outboard. Aft to starboard is the roomy (for this size vessel) head with a solid bi-fold varnished Teak Door for privacy, a hand held shower, sink with vanity and manual marine toilet. Back to port and aft of the galley is an under cockpit cabin that sleeps two behind a solid bi-fold varnished Teak Door for privacy, a hanging locker and other storage unit, and a couple of opening ports for ventilation. All, in all, this 1989 Pearson 27 Sloop is a lot of boat for its size and investment.

- Origo alcohol stove
- Single deep stainless steel sink
- Hot & cold pressure water
- 6 Gal. Seaward hot water heater
- Ice box (under the Nav Table)
- 12v LED lights throughout
-

In The Head:

- Manual Jabco marine head
- Holding tank with offshore discharge valve (for use where legal)
- Single sink
- Hand held hot & cold water shower
- Shower 12V sump drain pump

Sails and Rigging

This 1989 Pearson 27 Inboard Sloop has many updates to the Sails and Rigging:

- Mainsail (2007) with Dutchman System & Sunbrella Sailcover
- 135% Roller furled Genoa
- 100% Roller furled Jib
- Harken Roller furling system
- All lines and controls led aft to Cockpit with Sheet Stoppers
- (2) Lewmar #30 self-tailing primary sheet winches
- Lewmar #14 ST Halyard/Control winch with sheet stoppers
- Inboard genoa track with cars
- Adjustable Traveler with Port & Stbd control cleats
- Whisker Pole with Adjustable height slide ring on mast track
- Isomat Aluminum Spars
- Backstay Adjuster

Deck and Safety

- Bimini New in 2016
- Stainless steel boarding ladder
- Custom Helm Seat & Stern Rail with Cushions
- Cockpit cushions
- Fortress FX-11 anchor with chain and nylon rode
- SS Anchor Roller and Chain Lock
- Teak multiple drink holder at binnacle
- Folding Starboard table at binnacle
- 7 Opening Port Lights
- 2 Aluminum Framed Deck Hatches
- SS stanchions and double lifelines
- Teak Hand-Rails on cabintop
- Teak Toe-Rails on decks

Engine and Electrical

- Westerbeke 12B Diesel engine with approximately 900 hours
- 2018 Head Removed and Valve Job complete
- 2016 Alternator Replaced
- 2016 Rear Motor Mounts & New Belts
- 2016 Heat Exchanger Cleaned and Refurbished
- Stuffing Box Re-Packed
- 2007 Muffler
- Racor water separator fuel filter
- (2) Group 24 batteries
- Battery on/off switch

- Automatic Battery charger
- 5W Solar Panel with Regulator
- Ample Power Digital Battery Monitor
- 30 amp 120v shore power cord
- Manual and automatic 12V bilge pumps (2016)
- Interior 12V LED Lighting
- Navigation Lights
- Seaward 6 Gal. Hot Water Heater - 110V & Engine Heated

Electronics and Navigation

This 27 Pearson Inboard Sloop 1989, is very well-equipped for Coastal Cruising. The Navigation electronics include:

- Garmin GPSMap 441S Color Chartplotter with Depth
- Raymarine ST4000 WheelPilot Auto Pilot in Pod at Helm
- Raymarine Digital Depth Display in Pod at Helm
- Raymarine Digital Speed & Log Display in Pod at Helm
- Raymarine VHF Radio at Nav Station
- Cobra Handheld VHF Radio
- Ritchie Powerdamp Binnacle Compass

Исключения

При продаже яхты исключаются личные вещи владельца.

Отказ от ответственности

Компания предоставляет описание судна или яхты добросовестно, но не может гарантировать точность этой информации, а также не ручается за техническое состояние. Покупатель должен проинструктировать своих агентов или оценщиков исследовать представленную информацию более подробно, по собственному желанию. Продажа судна или яхты, изменение цены или снятие с продажи будет происходить без предварительного уведомления.

ФОТОГРАФИИ

Profile_Port Sailing



Profile_Stbd Bow



Profile_Stbd



Profile_Stbd Midships



Profile_Sistership Underbody



Profile_Bow & Foredeck



Profile_Stbd Deck & Windows



Profile_Aft Stbd Qtr



Rudder & Prop_Sistership



Wing Keel_Sistership



Cockpit 2016 Bimini & Solar Panel



Cockpit Custom Helm Seat



Cockpit_Backstay Adjuster Blocks



Backstay Adjuster_Johnson System



Cockpit Bimini & Stbd Cabin top



Cockpit_Aft Port Lazarette



Cockpit_Helm Table Down



Cockpit_Helm Table Up



Cockpit_Helm Cover



Lewmar ST Primary_Stbd



Lewmar ST Primary_Port



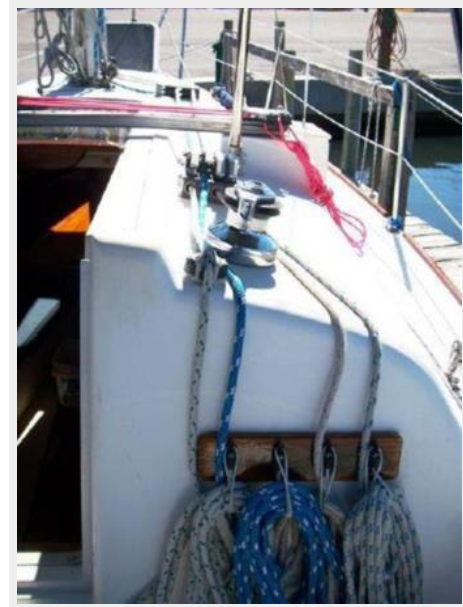
Helm Electronics & Compass



Companionway Varnished Teak Hatchboards



Companionway Line Hangers



Companionway Open



Traveler on Cabintop



Traveler_Adjustable



Lines Led Aft_Stbd Cabintop



Cabintop & Mast Base



Wide Sidedecks & Genoa Track



Cabintop_Looking Forward



Foredeck & Pulpit



Forward Opening Hatch



Sailcover & Dutchman System



Mast Track_Adjustable for Whisker Pole



Mainsail_Clean & Crispy



Mast Base_Forward Port



Mast Base_Lines Led Aft



Isomat Aluminum Spars



Anchor Locker Open



Fortress FX-11, Chain & Nylon Rode



Salon Teak & Holley Floor



Salon View from Companionway



Salon Table & New Cushions



Salon Table Down & V-Berth



Storage Under V-Berth_Port



Galley Sink & Stove Covered



Icebox Closed



V-Berth Shelf_Stbd



Led Light & Brass Clock & Barometer



LED Light & Deck Hatch



Deck Hatch Forward



Galley Stove Covered



Galley Stove Open



Private Aft Stateroom_Bi-Fold Teak Door



Private Aft SR_Door Open



Aft SR Double Berth



Aft SR_View of Cabinetry Forward



Aft SR Window & Storage



Aft SR Storage Open



Aft SR Storage Below



Aft SR Engine Cover & Shelf_Closed



Companionway View_Aft



Private Head Bifold Teak Door



Private Head_Door Open



Private Head, Vanity & Jabco Toilet



Private Head Shower Sump Pump

Private Head Vanity & Sink



IceBox & Nav Table Closed_Stbd



IceBox Open



6 Opening Ports



Westerbeke 12B Diesel Engine Under Stairs



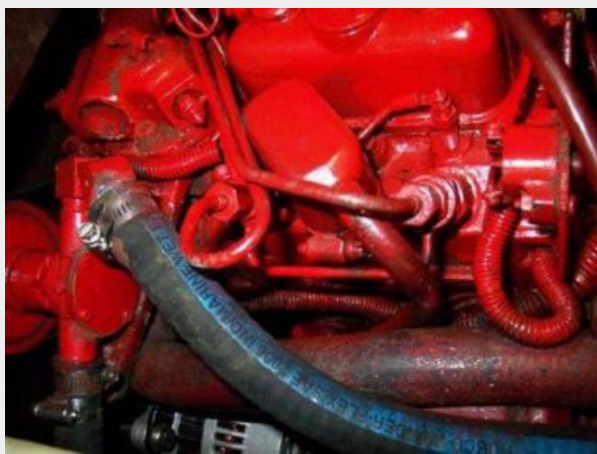
Westerbeke 12B Diesel Engine Under Stairs



Westerbeke Diesel_Excellent Access



Westerbeke Diesel_Clean & Well-Maintained



Racor Water Separator Fuel Filter



Westerbeke Panel in Cockpit



Westerbeke Diesel Instrumentation



Batteries



Solar Panel_5W with Regulator



Electrical Panels & Nav Table



Garmin GPSMap 441S



Electronics at the Helm



Raymarine Displays in Pod at Helm



Ritchie Compass at Helm



Raymarine ST4001 WheelPilot



Raymarine VHF Radio at Nav Table



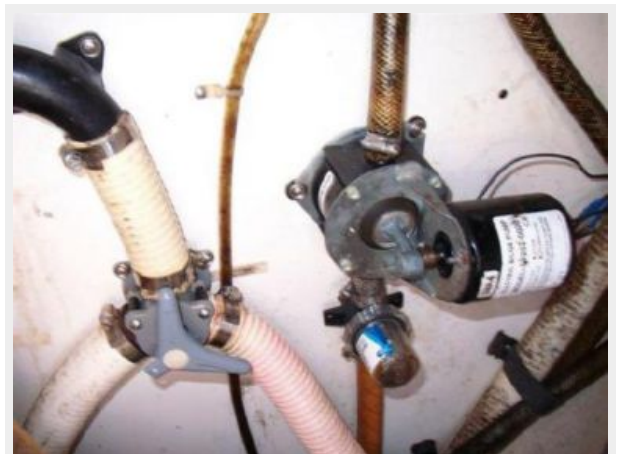
Cobra Handheld VHF Radio



Seaward 6 Gal. Hot Water Heater



Plumbing is Updated and ABYC Compliant



Easy Access to Through-hull Transducers



КОНТАКТЫ

Андрей Шестаков (Andrey Shestakov) – ведущий яхтенный брокер отдела продаж яхт и судов компании Shestakov Yacht Sales Inc. Официальный представитель Shestakov Yacht Sales Inc. для русскоговорящих клиентов в центральном офисе компании в Майами/Форт Лодердейл/Флорида/США.

Контактная информация

Email: andrey@shestakovyachtsales.com

Web: shestakovyachtsales.com

Телефоны

Краснодарский край: **+7(918)465-66-44**

США, Майами, Флорида: **+1(954)274-4435**

Время работы

Понедельник – Суббота: **9:00 - 21:00**
EDT

Воскресенье: **Закрето**

Адрес



Harbour Towne Marina, 850 NE 3rd St,
STE 213, Dania, FL 33004