

27 1991 PRECISION P27 — PRECISION



Builder: PRECISION

Year Built: 1991

Model: Cruising Sailboat

Price: PRICE ON APPLICATION

Location: United States

LOA: 27' 0" (8.23m)

Beam: 10' 0" (3.05m)

Max Draft: 3' 7" (1.09m)

Our experienced yacht broker, Andrey Shestakov, will help you choose and buy a yacht that best suits your needs 27 1991 Precision P27 — PRECISION from our catalogue. Presently, at Shestakov Yacht Sales Inc., we have a wide variety of yachts available on our sale's list. We also work in close contact with all the big yacht manufacturers from all over the world.

If you would like to buy a yacht 27 1991 Precision P27 — PRECISION or would like help answering any questions concerning purchasing, selling or chartering a yacht, please call +1(954)274-4435

TABLE OF CONTENTS

TABLE OF CONTENTS	2
SPECIFICATIONS	3
Overview	3
Basic Information	3
Dimensions	3
Speed, Capacities and Weight	3
Accommodations	4
Hull and Deck Information	4
Engine Information	4
DETAILED INFORMATION	5
Features	5
Exclusions	9
Disclaimer	9
PHOTOS	10
CONTACTS	15
Contact details	15
Telephones	15
Office hours	15
Address	15

SPECIFICATIONS

Overview

NEW LOWER PRICE-OWNER SAYS "SELL"

This magnificent 27' Precision has the most extensive electronics package ever put on a 27' sailboat. She is equipped to go anywhere in any weather day or night. Imagine RADAR, Forward Looking TV Camera, GPS, & Single Sideband Radio, as well as VHF & Auto Pilot. There even is a 9' Bombard Dinghy w/air floor and a 3.5hp 2013 Tohatsu 4Stroke outboard. What could be better!!! She will pass a rigid survey, In addition to the boat, there is a custom trailer with an electric winch & gin pole for raising & lowering the mast. Trailer her to all those faraway places you have always wanted to sail, crank up the mast and go exploring. Mate all this up with a low time Universal Diesel and you have the best of the best.

Basic Information

Category: Cruising Sailboat

Model Year: 1991

Year Built: 1991

Country: United States

Dimensions

LOA: 27' 0" (8.23m)

LWL: 22' 10" (6.96m)

Beam: 10' 0" (3.05m)

Max Draft: 3' 7" (1.09m)

Clearance: 42' 0" (12.80m)

Speed, Capacities and Weight

Displacement: 5400 Pounds

Water Capacity: 22 Gallons

Holding Tank: 9 Gallons

Fuel Capacity: 9 Gallons

Accommodations

Total Cabins: 1

Total Berths: 2

Total Heads: 1

Hull and Deck Information

Hull Material: Fiberglass

Engine Information

Engines: 1

Manufacturer: Universal

Engine Type: Inboard

Fuel Type: Diesel

DETAILED INFORMATION

Features

Electronics VHF Log-speedometer Plotter Navigation center Autopilot DVD player Radar TV set Cockpit speakers Depthsounder Radio GPS Compass Wind speed and direction **Sails** Furling genoa Gennaker/Cruising spinnaker Fully battened mainsail **Rigging** Steering wheel **Inside Equipment** Manual bilge pump Marine head Electric bilge pump Battery charger Hot water **Electrical Equipment** Shore power inlet **Outside Equipment/Extras** Outboard engine brackets Cockpit cushions Swimming ladder **Covers** Bimini Top Lazyjacks Mainsail cover **Additional Equipment** Road trailer Launching trailer

General

1991 Precision 27' Sailboat "The Toy Box" Cruise Ready Coastal Cruiser fitted out for single handing. PICTURES AVAILABLE UPON REQUEST, most P-27 modifications on the Precision owners website are from this boat. Excellent Condition. Ready to sail. Boat waxed not less than annually, gelcoat still shines deeply.

Digitized Manuals for all systems, electrical, motor, transmission.

Electrical

Autopilot - Raymarine ST5000+ Sail Pilot with ST600R 25' wired remote in salon.

1. Radar - Raymarine Pathfinder, RL70CRC LCD, 7-inch screen, fixed mount wired in salon and at helm. Raymarine 2k24-mile scanner.
2. , radar, SSB, autopilot and laptop. Fixed mounted in salon and wired to helm.
3. GPS - Garmin 230 chartplotting 7 -inch interfaced with VHF, radar, SSB, autopilot and laptop. Fixed mounted in salon and wired to helm.
4. Single Side Band - ICOM-710 RT (ham and marine bands),AT-130 antenna tuner, split backstay antenna. AirmailSailmailAPRS ready, isolated RF capacitans ground system.
5. RS 232/USB Interface - for laptop/SSB/GPS permits laptop navigation software to drive autopilot
6. VHF DSC Enabled Radio - Uniden UM625C ES with color display, cockpit amplified VHF speaker (Standard Verizon 10 watt MLS-310), mast top 3DB antenna, (2) WHAMX4 wireless remote microphones.
7. Depth Sounder - Wind Annometer - Signet-wind, depth and speed, Network System, many pages of information may be shown on 4" x 4" display including GPS information.

1. Battery Charger - Guest 2 bank 15 Amp
2. Entertainment Center - Jensen VM9020TS ; 6.5 inch LCD touch video monitor, SDTV, DVD, MP3, WMA, SO, AM/FM stereo receiver with bow, midship and cockpit speakers, video repeats on 17 -inch video monitor
3. TV monitor - 17 -inch LCD flat screen w/two remote switchable video inputs
4. TV Antenna - SeaWatch 2020 amplified type
5. Antenna Mast Top - Am/FM and cell phone
6. Vena Tank Monitor for holding tank and fresh water
7. Video Camera - Mast-mounted 16X zoom 1/3-inch CCO, wireless remote control (navigate from salon, steering with autopilot remote, forward view on TV monitor)
8. /Charge System Controller - Zantrex link 2000R inverter/charger controller, dual battery bank monitor and regulator.
9. Carbon Monoxide Detector - Zintex
10. WIFI Amplifier-bi-directional amplifier. 1 watt with stern rail antenna
11. Amp Meter /Fuel Guage - Teleflex shunt operated at helm

Alternator - oversized Balmar 75 amp and Zantrex Link 2000-R smart regulator

Batteries - (1) size 24, 100 amp start battery, (2) 6-volt 235 amp house batteries, battery switch with field ground, permits hot switching

Hatch/Storage lights, all cockpit and salon hatches and engine compartments have interior switchable lights

Many spare parts, including these major items: 75 amp Balmar alternator, emergency regulator, engine close-circuit water pump, raw water pump, zincs, impellers, bilge pump, engine and transmission gaskets

Sails

1. 155 genoa; large viewing window; sail bag.
2. Roller Furler - Harken: Unit O_1990Feb_Series B. Lines lead to cockpit.
3. Spinnaker w sock - Asymmetrical
4. Main sail shows boat model and hull number; sail bag.
5. Sail track - Tides Marine low friction track with stainless slides.
6. Lazy Jacks - Stowable type. Lines led to cockpit.
7. Harken mainsheet blocks, boom vang and traveler. *B.* Reefing - 2 line reefing system led to cockpit.

Cockpit

1. Biminis - Sunbretta Double with bridge between (can remain up when sailing, 6'1" headroom at wheel)
2. Cushions - Full cockpit vinyl covered, closed-cell, snap held; cabin house backrests

1. 3 storage lockers
2. Seawater wash down in anchor locker and cockpit
3. DC power socket under helmsman's seat
4. Winches - 4 each Bariant self tailing for halyards and genoa sheets.
5. Helmsman's Wheel- Edson 335 pedestal chain & wire wheel steering with cover
6. Helmsman's Compass - Ritchie Navigator 2000 DNP 200 - night lighting

Exterior

1. Outboard Motor Mount - Rail type
2. Removable baby stays to align mast with center of hull during mast raising and lowering
3. & life line storage bags
4. Dock Lines - 5 ea 3/8" matching blue dock lines
5. Anchors- 2 each Fortress 7 lb. on bow pulpit with Wind line rail holders
6. Anchor Rode -Main: 35' 5/16"BBB +150' 1/2" line. Aux: 6' 5/16" chain+150 3/8" line

1. .

Galley

1. **Stove** - Two-burner alcohol - Origo 4000 + adjustable pot holders
2. **Ice Chest** - Built-in
3. **Enclosed teak storage** - 3 drawers, 2 wall cabinets, undersink pullout.
4. **Sink** - single basin with **pressurized** Hot/Cold water

Salon

1. **Instrument Panel** - Custom teak. Lockable; removable; quick disconnects on all electronics
2. Custom teak storage cabinets starboard and port
3. Custom teak pin-wheel rail shelf with drink holders port and starboard
4. **Paper Towel Rack** - Built-in teak
5. Hidden garbage container
6. **Curtains**
7. Curtain valances - teak
8. Sleeps 3-4
- 9.
10. Large opening fore hatch with no-see-um screen
11. Companionway boards, teak with removable window and screen.
12. Alpen Glow marine dual power LED and florescent salon light, (2) Florescent and (2) Reading
13. **Cushions** - Fabric covered salon and v-berth closed cell cushions

Aft Cabin

Sleeps 2

1. 2 opening hatches
2. *Medicine cabinet, teak, with mirror*
3. *Teak privacy door and storage locker*

5.DC Power Strips

6. Lighting DC - (3) Florescent lamps, (1) incandescent

Head

1. Hanging locker with water resistant curtain for locker, storage and sink area 2. Medicine cabinet [teak] with storage above for towels

1. Opening hatch
2. **Pressurized hot/cold water** with handheld shower and soap dispenser
3. **Toilet** - Jabco manual
4. Mirror
5. **Macerator**, self-bailing holding tank with overboard discharge option
6. **Hot water heater**, 6 gallon, operates on AC or engine heat
7. Lighting DC- 1 florescent and 1 incandescent 10. Custom built-in toilet paper holder

Trailer - Additional \$2,000.00

1. **EZ Loader Galvanized**, 64 roller, adjustable keel support, TEZR 23-25-27 7000# customized with spare tire holder and
2. **Axels** - (2) 6,000 lb. Reliable Surelube (grease through without repacking)
3. **Tires** - Radial- Five new Carlisle U.S. Trail ST225175 R15
4. **Winch Electric** - 6,000 lb. Rhule 60T with wireless and wired remote controls
5. Storage box
6. **Mast raising** system-telescopic, crank-up crane expands to 21 feet. Uses wireless remote control electric winch to raise and lower the mast, roller mast crutch (permits two people to raise and lower the mast without heavy lifting)
7. Winch and spare tire covers
8. **Disk Brakes Stainless** - Tie Down G-4 on all four (4) wheels
9. **Surge Brake** - DICO 10 activator with load distributing modification 10. **Hitch and Load Bars** - Reese weight distributing w 25/16" ball

1 O. LED taillights

1. 7 -pin electrical connection wired with reverse lock-out

2. **Tongue Jack** - 1,500 lb. DL
3. DC harness to operate electric winch via tow vehicle
4. All leaf spring bushings are fitted with grease zerks

Dingy & Outboard

DINGY

2013 Bombard MAX3+Aero, 9', 62lbs

Bag: Length=3'9"[45"] Width=1'8"[20"] Height=1'1"[13"]

Packed in bag:

Boat, Oars, Seat, bailing bucket, bridle, tow rope, bow dockline, port and starboard stern dockline.

Pump and Bag.

Pump can be stored in outside pocket.

MOTOR

2013 Tohatsu MFS3.5BS, 3.5 HP four-stroke, 15" shaft, Manual Start, Tiller Handle Outboard. Mounted on stern rail bracket with securing harness.

Includes Integral Fuel Tank, Propeller, Tohatsu 5-Year Warranty. Price \$949.99, Quantity (1)

SERIAL # 036318AB

Exclusions

Owner's personal belongings.

Disclaimer

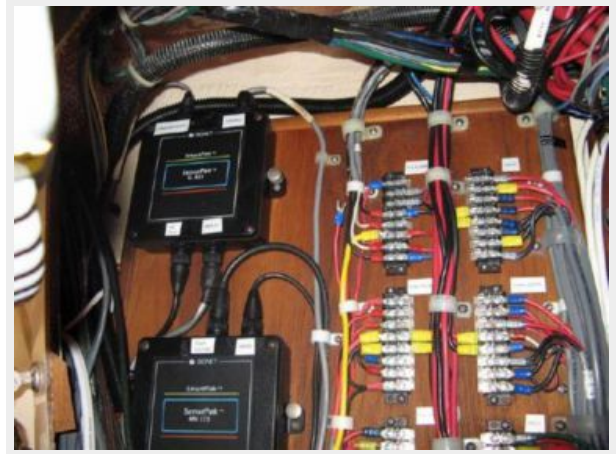
The Company offers the details of this vessel or yacht in good faith but cannot guarantee or warrant the accuracy of this information nor warrant the condition of the vessel. A buyer should instruct his representatives, agents, or his surveyors, to investigate such details as the buyer desires validated. This vessel or yacht is offered subject to prior sale, price change, or withdrawal without notice.

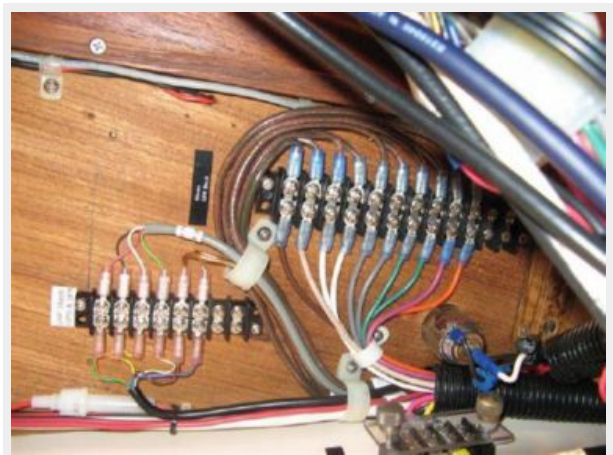
PHOTOS











CONTACTS

Andrey Shestakov, leading yacht broker of the sales department of Shestakov Yacht Sales Inc. Shestakov Yacht Sales Inc., the official representative of the Miami/Fort Lauderdale FL headquarters.

Contact details

Email: andrey@shestakovyachtsales.com

Web: shestakovyachtsales.com/en/

Telephones

USA: +1(954)274-4435

Office hours

Monday – Saturday: **9:00 - 21:00** EDT

Sunday: **closed**

Address



Harbour Towne Marina, 850 NE 3rd St,
STE 213, Dania, FL 33004