

THUNDERBALL — DENISON



Builder: DENISON

Year Built: 1988

Model: Mega Yacht

Price: PRICE ON APPLICATION

Location: Spain

LOA: 115' 0" (35.05m)

Beam: 21' 4" (6.50m)

Max Draft: 5' 0" (1.52m)

Cruise Speed: 27 Kts. (31 MPH)

Max Speed: 38 Kts. (44 MPH)

Our experienced yacht broker, Andrey Shestakov, will help you choose and buy a yacht that best suits your needs **THUNDERBALL — DENISON** from our catalogue. Presently, at Shestakov Yacht Sales Inc., we have a wide variety of yachts available on our sale's list. We also work in close contact with all the big yacht manufacturers from all over the world.

If you would like to buy a yacht **THUNDERBALL — DENISON** or would like help answering any questions concerning purchasing, selling or chartering a yacht, please call **+1(954)274-4435**

TABLE OF CONTENTS

| | |
|--------------------------------------|----|
| TABLE OF CONTENTS | 2 |
| SPECIFICATIONS | 5 |
| Overview | 5 |
| Basic Information | 11 |
| Dimensions | 11 |
| Speed, Capacities and Weight | 11 |
| Hull and Deck Information | 11 |
| Engine Information | 12 |
| DETAILED INFORMATION | 13 |
| Dimensions | 13 |
| Engines | 13 |
| Vessel Overview | 13 |
| Accommodations | 14 |
| Vessel Walkthrough | 14 |
| Salon | 15 |
| Galley | 16 |
| Dining | 16 |
| Master Stateroom | 16 |
| Forward VIP Stateroom | 16 |
| Guest Staterooms | 17 |
| Crew Quarters | 17 |
| Pilothouse | 17 |
| FLYBRIDGE | 18 |
| Electronics & Navigational Equipment | 18 |
| Engine / Mechanical Equipment | 18 |
| Electrical System | 18 |
| Deck & Hull | 19 |
| Aft Deck | 19 |

| | |
|------------------------------|----|
| Recent Upgrades | 19 |
| Watersports | 19 |
| Safety & Fire Protection | 19 |
| Remarks | 20 |
| Exclusions | 20 |
| Exclusions | 20 |
| Disclaimer | 20 |
| PHOTOS | 21 |
| Full Beam Master Stateroom | 25 |
| Master Stateroom (Port Side) | 25 |
| VIP Stateroom (Forward) | 25 |
| Guest Stateroom | 25 |
| Guest Stateroom | 25 |
| Pilothouse | 26 |
| Engine Room | 26 |
| Layout | 31 |
| Line drawing 3 decks (1) | 31 |
| 20140628_143628 | 31 |
| 20140628_145019 | 31 |
| 20140628_145045 | 32 |
| P5050003 | 32 |
| P5050004 | 32 |
| P5050005 | 32 |
| P5050007 | 32 |
| P5050009 | 32 |
| Passage Gibraltar 2018 | 33 |
| PC170192 | 33 |
| PC190222 | 33 |
| PC190240 | 33 |

| | |
|-----------------|----|
| PC190241 | 33 |
| CONTACTS | 34 |
| Contact details | 34 |
| Telephones | 34 |
| Office hours | 34 |
| Address | 34 |

SPECIFICATIONS

Overview

BUY THIS LEGENDARY HIGH SPEED MTU-JET SUPERYACHT

AT JUST \$995,000: One of the fastest yachts in the world!

115' Denison 1988

The 'Legendry' THUNDERBALL.

"THUNDERBALL" set the benchmark of speed and innovative design among American Muscle boats.

Powered by 2 x MTU 16V-396-TB-94 Triple turbo engines delivering 3500HP each linked with ZF Gear boxes to ROLLS ROYCE KA-ME-WA Jet drives. She immediately set industry records for speed and endurance. She has proved herself as an exhilarating fast boat on the plane, achieving 50+ knots and a solid passage-maker in heavy seas when run for maximum cruising autonomy.

Originally, the ROLLS ROYCE propulsion and engine package alone was a \$2.4 million upgrade from the standard, which translates to a huge value/speed to a buyer in today's economy. Her shallow draft and vast salon space make her an ideal live aboard, Charter vessel or as originally conceived Fast Cruiser.

Commissioned from the renowned Denison Yard, Fort Lauderdale in 1987 by John Rosatti to successfully compete against his speed nemesis John Stallupi, still aficionados of fastcraft. She is still: **TheFastest Twin-Engine Motor Yacht over 100' built in the US in the 20th Century!** The innovative design concept has been mimicked by others but never bettered.

The current BritishOwner has had a long affinity for ROLLS ROYCE, which was his motivation to be part of the THUNDERBALL history. He has done the hardest work, which is bringing the powerful and innovative ROLLS ROYCE engineered MTU 396-TB-94 Series (3,500 HP x2) Diesels and the ROLLS ROYCE KA-ME-WA Jet Drives up to full working order and refining them for the modern cruising environment. She has recently had extensive engineering reports and assessments including a full sonic hull thickness testing following sand blast to bare metal below the waterline.

Thunderball has recently completed several extended offshore passages and has cruised the Mediterranean. The Owner has seen her potential achieving speeds approaching 40 knots. He and his wife have enjoyed spending summers on the "Costa Blanca" coastline and the beautiful "Balearic Islands", Spain.

The very attractive pricing allows the New Owner room to tackle the interior refit, and tailor **The Fastest Twin-Engine Motor Yacht over 100' built in the US in the 20th Century** to their

cruising needs.

I am privileged to be selected as the Exclusive Listing Agent for my favourite DENISON (Other than our family, of course!).

Location

Presently THUNDERBALL is berthed in Denia, Spain where I met the Owner and his Captain, John. (who also runs an experienced team of Refit Engineers, and would be keen to support the New Owner),

THUNDERBALL is ideally located either for transportation back to America or as a central base to explore the beautiful European, Mediterranean coastline. The Captain / Engineer has extensive knowledge of the boat, history, works completed and required to prepare THUNDERBALL for the approaching season.

Vessel

THUNDERBALL'S full beam interior provides vast interior accommodation on all 3 deck levels. Her style, lines and speed make her a stunning yacht. An exceptional 118' / 35mtr yacht.

Her full hull width accommodation achieves a vast MAIN SALOON (**32' / 10mtrs long x 21' / 6mtrs wide**) and **MASTER SUITE. Exceptionally large widow area gives unmatched space, views and light.**

All this translates to an ideal yacht for entertaining and exceptionally spacious living. During her successful years in BVI charter she frequently accommodated parties of 45 with a license to max 60 people.

Whether the boat is used as a Live Aboard, Meeting Venue, Charter Boat or for Family Holidays the space is unmatched on boats of this size.

Full Overview

Designer: J. Langlois

Builder: Denison

Engines: 2 x MTU 16V 396 TB94 Total 7000HP

Drives: 2 x Rolls Royce Ka-Me-Wa Water Jets

Fuel: Diesel

Cruising Speed: 27 knots

(Planes at 21Knots. Currently electronically restricted to 27Knots for maximum autonomy and

engine longevity)

Max Speed: 50Knots

Dimensions

Length: 118' / 35Mtrs

Beam: 21.4' / 6.5Mtrs

Draft: 4.5' / 1.3Mtrs

Fuel Tanks: 5 total 10290 US Gal / 40,000Ltrs

Fresh Water: 2 total 1000 US Gal / 3900Ltrs

Holding: 1 total 220 US Gal / 850Ltrs

Launch Name: THUNDERBALL

Formerly known as: Texas Star Regazza

Engine & Drive

Twin diesel MTU 16V 396 TB94, 3480hp each, driving KaMeWa water jets, 71 series – W6 2002
- Last full Service 2018 by MTU Engineers.

Port: 6085 hrs Starboard: 7049 hrs

Both engines incorporate Hydraulic PTO"s via Centaflex couplings.

Rolls Royce Ka-Me-Wa Joy stick controls for water jets port & stbd.

Lower helm / Pilot house

Fly Bridge central console

Port wing controls

Starboard wing controls

MTU Engine gauges exhaust, gas, temp and A & B

MTU Deuta tachometers

MTU Alarm indicator lights

Trim tabs controls

Hydraulic controls for windlass and bow thruster at all stations

ZF gears model BW755 – serviced 2018

Raycor fuel filters - main engines and generators

Main engine exhaust and jackets new 2006

Fuel consumption: 280 gallons per hour at 36 knots, 65 gallons per hour at 13 knots

Electronics & Navigational Equipment

Full electronics refit 2013,

by Telmar Yachting, Fort Lauderdale (70,000\$ upgrade)

SIMRAD 19" NSO colour MFD x 3 (2013)

SIMRAD NSO Controllers and computers x 2 (2013)

SIMRAD AP50 Auto Pilot (2013) (requires calibration to compass)

SIMRAD TX06S 6kw 4' Oped array RAYDAR (2013)

SIMRAD TX10S 10Kw 5' Open array RAYDAR (2013)

SIMRAD MX535 AIS Transponder (2013)

Raytheon GYRO COMPASS Standard 20 (requires calibration to autopilot)

ICOM M 604A VHF x 2

ICOM SSB M804

ICOM hand held VHF x 8

FLIR forward night vision (2013)

Thrane and Thrane Sailor Sat Phone (Out of contract)

Rear Deck camera

Mechanical Equipment

Primary Hydraulic pump driven from Port generator via Clutch

AUXILIARY electric Hydraulic pump

2 x Maxwell Hydraulic Capstan winches rear deck

Maxwell 5000 Hydraulic Capstan and dual anchor windlass on forward deck

NavCon hydraulic trim tabs (Functioning but require position sensors)

Bespoke 40HP Hydraulic Bow thruster

2 x Variable Speed Engine room blowers (Stb untested and missing Baldor control)

2 x Oversized 300lb PLOW anchors w/200ft of chain

Stern Passerelle & boarding ladder- Manually operated

Marquipt sea stairs - port & starboard - Oversized

Marquipt sea crane for small boats - 2 Tons

Bollard cleats fore and aft

Stainless Steel swim ladder

2 x Cruisair chilled water air conditioning system. (Untested)

Air condenser units in all areas and ER

Installed new 1997 upgrades 2007 Rebuilt 2012 (Unchecked)

Village Marine Tech Water maker 800 GPD x 2

New 2007 Rebuilt 2012 Last operated 2016. Stored with Chemical preservative

Primary and secondary fresh water filters.

Microphor Heads and sewage system to Black tank.

6 x 12V Automatic bilge pumps located throughout the vessel

2 x 110V Electric bilge pumps which can draw from six locations (up to 100 GPM)

Electrical System

Shore Power Hook UP

Isolation transformers New 2016

Intelligent voltage activated TAP control New 2016 (requires 2 relays)

2 x Northern Lights 60Kva Generators

Both Generators Fully serviced June 2017

Starboard Genrator fully rebuilt 2016

Exhaust modified and rebuilt 2017

Port gernerator drives a clutchable Hydraulic PTO

1 x 12 Volt Mastervolt battery charger / Inverter 3000w

1 x 24 Volt Mastervolt battery charger

3 x 24V batteries banks, one for each engine, one for KaMeWa jets

2 x 12V battery bank for ship's service and generators (selectable)

2 x 12V bank of batteries for electronics (Dog House)

2 x Pro-Mariner battery chargers supporting electronics

Watersports

2 x 2007 Yamaha VX deluxe 3-person waverunners.

Safety

Fire extinguishers located throughout vessel (Test due June 2019)

Full Coast Guard safety equipment and life jackets

EPIRB (Unregistered)

Bell

Boat Hook

2 x 8 Person Avon liferaft (Test Due Sept 2016)

Orion Flairs (Unchecked)

Remarks

One of the most outstanding values in a high speed, quality built, proven integrity motor yacht. Ready for immediate cruising and/or redecorating to your personal taste and function. No other yacht can do what this yacht can do or can go where this yacht can go in this price range. Because of the waterjets, you can even beach her for a picnic on a calm day. Dreams can come true at half the price of a lower performing competition. Call for an appointment today.

Exclusions

Owners personal items and tools.

Disclaimer

The Company offers the details of this vessel in good faith but cannot guarantee or warrant the accuracy of this information nor warrant the condition of the vessel. A buyer should instruct his agents, or his surveyors, to investigate such details as the buyer desires validated. This vessel is offered subject to prior sale, price change, or withdrawal without notice.

General Description

THUNDERBALL is a 115 Denison 1988 yacht located in the waters of PORT DENIA, Spain. She is powered by 2 x MTU 396 16V and Ka-Me-Wa Water Jets delivering 7000hp. Her shallow draught, speed and vast accommodation space give unprecedented flexibility of use.

Both engines running, serviced by MTU engineers, tested with reports available and ready to travel.

New HEMPLE bottom paint from bare aluminium with surveyor reports and A+ Rating. Audio-Gauged and endorsed 2017 at Varadero Port Denia.

She is ready for her new owners.

Basic Information

Category: Mega Yacht

Model Year: 1988

Year Built: 1988

Country: Spain

Dimensions

LOA: 115' 0" (35.05m)

Beam: 21' 4" (6.50m)

Max Draft: 5' 0" (1.52m)

Speed, Capacities and Weight

Cruise Speed: 27 Kts. (31 MPH)

Max Speed: 38 Kts. (44 MPH)

Max Speed RPM: 1850 Kts.

Water Capacity: 1000 Gallons

Holding Tank: 220 Gallons

Fuel Capacity: 10290 Gallons

Hull and Deck Information

Hull Material: Aluminum

Engine Information

| | |
|--------------------------|--------------------------|
| Engines: 2 | Manufacturer: MTU |
| Model: 16V396TB94 | Fuel Type: Diesel |

DETAILED INFORMATION

Dimensions

Beam: 22.5 Max Draft: 4.5

Engines

Total Power: 3480 Cruising Speed: 35 Max Speed: 38

Vessel Overview

4 Stateroom Ocean taming HIGH SPEED MOTOR YACHT.

Rarely will you have the opportunity to purchase a yacht with the integrity, features, abilities and quality of "Texas Star" in this price range.

In the late 1980's and 1990's, a handful of yachts were built with the most advanced engineering and machinery available. The integrity of their hulls and performance created a new era in yachting.

Achieving speeds in up to 40 knots with solid cruising speeds near 35 knots, you will enjoy the thrill of the travel as well as the arriving.

Come take a ride on "Texas Star II" at around 38 knots (approximately 43 miles mph), it is like standing on a horizontal rocketship. Your friends and you can enjoy breakfast in Fort Lauderdale, a beach picnic in Bimini and dinner in Nassau and then go for a starlight cruise at idle speeds past your favorite moonlight beach!

There are other yachts that may compete in price, but none can compete with performance. While "Texas Star II" can cruise at a lumberly 15 knots with the rest of the yachts they have no ability to cruise at 35 to 40 knots and that makes all -the- difference.

Originally conceived, the propulsion and engine package alone was a \$2.4 million upgrade from the standard, which translates to a huge value/speed to you in todays economy.

So when shopping for a yacht of incomparable vintage, size and price ranges, consider the following... "Texas Star II" has:

- 35 to 40 knot speed
- Clean, good solid strong condition
- Never failed, always operating at peak levels
- 4 staterooms in owner's party with private staircase to master cabin
- Huge salon aft deck and Flying Bridge, great for entertaining up to 45 guests (parties with

60 people have been accomplished)

- Excellent yacht for Charters
- Top MTU equipment and reliable low frequency of service water jets
- Upgraded interior - clean and contemporary, allowing your easy additions, modifications and changes to suit your taste.

Worried about maintenance (don't be) in the past year "Texas Star" has received \$450,000 worth of work updating her machinery and mechanical condition with:

- Completely rebuilt water jets
- New bottom paint
- Both engine inner and after coolers cleaned and serviced
- Injectors serviced
- Engine saltwater plumbing updated

Accommodations

Four Staterooms, Three Crew Quarters

Vessel Walkthrough

Texas Star's full beam interior , style and speed make her a stunning yacht.

Boarding on the aft deck is via a passarelle or from the tender (there are also side boarding ladders) you are immediately impressed with the integrity and size of this vessel and the AFT DECK space, a great place for lunch "al fresco"sight seeing or a cocktail party.

Below is a large swim platform ready to use for swimming, diving, entering and exiting the tender. There are Port and Starboard doors, and a bench seat on the aft deck. To port there is a storage cabinet on the starboard wet a bar with refrigerator, sink and icemaker.

Entering the main salon through plexi-glass doors the fun begins. There is a huge L-shaped sofa to port (seats 10) with two 1/2 circle easy chairs. To sbt. is another full bar with 5 bar stools.

Further forward is circular table with 4 chairs, great for breakfast coffee or a card game. To starboard is a pop-up plasma TV, and entertainment center with a small writing table to Port. A dayhead and stairway leading down to the MASTER STATEROOM.

All this translates to one very good entertaining yacht and has frequently held parties of up from 45 to max 60 people.

Further forward is the fully equipped GALLEY with all of the equipment needed for full food service. Forward, behind a sliding screen on the galley counter is a semi-formal DINING ROOM with partial separation of the galley. This is more elegant than the popular

country kitchen found on other vessels, yet very practical. The dining room has seating for 8, a buffet for dishes with a granite counter top.

Going down steps forward leads to a QUEEN BED CABIN with head and shower in the bow making a great VIP cabin. This is followed by PORT and STARBOARD GUEST STATEROOMS.

Leading up to the HELM STATION featuring a hydraulically operated helm seat to allow the captain unrestricted views and comfort. To Port is a small radio room. On the port side of the helm station is a navigation station with radios and extra equipment.

Leading up 4 steps to the FLYBRIDGE is a long bench seat, There are wing controls port and starboard, search light air horns. A KitchenAide refrigerator in the bridge, bench seating to Starboard, long L seating to port, 2 waverunners aft with davit and tender.

Salon

In addition to what is mentioned in the Walk Thru, the Main Salon features the entertainment center (located on the starboard side) which includes a television, DVD player, VCR and stereo system. A complete wet bar with 5 barstools is located further aft on the starboard side and provides great entertaining opportunities for you and your guests. On the port side is a large, comfortable sofa seating up to 10 people with 3 coffee tables. Next to the sofa forward is a writing desk. Amidships forward is a small glass, four-person, circular table great for use as game table or a breakfast area.

As mentioned earlier, the entertainment ability of this Salon flybridge aft deck allow this boat to accommodate forty people comfortably and the owner has had parties with up to 60.

- Sony stereo
- Precision audio component surround receiver for surround sound
- Philips DVD Player
- Mitsubishi cassette player
- Techniques Compact disc changer (60)
- Direct tv input for TV's (3) Master Guest & Crew
- SeaTel antenna control panel wave call
- Entertainment center: TV, VCR, stereo
- Three (3) coffee tables
- Complete wet bar with five (5) stools
- Desk
- Two oversized leather chairs
- Blinds
- Large cabinet with storage and countertop.
- Twin (2) decorative vertical wall lamps

Galley

The galley can be accessed from the starboard-side hallway leading from the main salon. The galley is fully-stocked with all equipment necessary for a full-service charter, including ample counter space for service up to 60 people separated by a screen from the dining room.

Overhead storage KitchenAide Full-size 2 door stainless refrigerator/freezer Maytag Four-burner stove with double oven Large counter space with Granite counter tops Kitchen Aid Microwave oven Whirlpool Trash compactor Kitchen Aid Dishwater Stainless Steel Double sink Kenmore Garbage disposal Kitchen Aid Clear Ice machines

Dining

Located forward of the galley on the main deck. Elegant formal dining table with seating for 8

Master Stateroom

"Texas Star II " exquisite full-beam MASTER STATEROOM on the lower deck is accessed via a private stairway which leads down from the forward port corner of the Main Salon. is complete with King bed Jacuzzi , vanity lots of closet space assures the comfort and level of luxury required after a day of fun. The Master Stateroom gives a quiet ride and serene oasis while away from home. Again, the colors are light, soft, easy to live with and easy to add your own personal taste to.

In addition there is his and hers closets and dressers port and starboard with ample drawer storage. Included is a small vanity area. There is a complete entertainment center built in the bulkhead opposite the bed with pop up TV. The room features an ensuite bath with 2 person Jacuzzi tub, twin sinks and toilet. Features include:

- Centerline king berth
- Entertainment center with stereo,
- Two (2) night stands
- Oversized desk and dresser
- Television and DVD Vanity and make-up mirror
- Air conditioner Ensuite bath with Jacuzzi
- Twin closets

Forward VIP Stateroom

Down from the dining salon forward is a VIP STATEROOM on the lower deck and is accessed

via a stairway which leads down from the forward port corner of the dining salon. Your VIP guests will feel comfortable and at home in this great stateroom featuring private en-suite bath and shower, entertainment system, with a good size hanging locker and drawer storage, also featuring:

- Smoke alarm
- Center-line double berth
- Storage underneath berth
- Closet
- En-suite bath and shower
- Air conditioner
- Entertainment center with stereo, TV
- DVD

Guest Staterooms

Forward are the two guest Staterooms. Away from the engines and upper deck areas your guests will enjoy some rest and relaxation. Children and family will have a place to go and share the days stories about using the wave runners etc.

Port and Starboard Guest Staterooms:

Two Guests Staterooms are located port and starboard on the lower deck. Both staterooms are accessed via a stairway which leads down from the dining salon and feature:

- Two (2) twin beds
- Smoke alarm
- Centerline double berth
- Storage underneath berth
- Closet
- Ensuite bath and shower
- Air conditioner
- Entertainment center with stereo, TV & DVD

Crew Quarters

The crew quarters are entered via a stairway starboard from the main deck. The crew quarters consists of 3 cabins, 2 with 2 single berths and 1 double berth Captains cabin. There is a crew "mess" with dinette. Two heads Two showers Crew lounge/dining Washer & dryer Ensuite bath and shower Entertainment center with stereo, TV & DVD

Pilothouse

The pilothouse is entered from the main deck via hallways both port and starboard and up 4 steps. The helm is very well laid out with all controls and navigation electronics easily accessible from the helm chair. The helm chair is to port with a lounge which seats two just aft of the helm chair.

FLYBRIDGE

The flybridge/boat deck is accessed from the pilothouse. The FB helm station is well laid out and has two padded helm chairs. There are wing controls both port and starboard.

Just aft of the helm is a service counter built around the mast and which features a sink, Kitchen Aid clear ice maker, refrigerator and ample storage. On the port side is a lounge which runs aft to where the tender is stored. There is a small dining table and lounge chairs. A sundeck this large gives you and your friends a place to gather for fun, sun and enjoyment. She'll hold a crowd to watch Fireworks on the 4 th of July your national holiday.

Electronics & Navigational Equipment

Joy stick for water jets port & stbd. Engine gauges exhaust, gas, temp and A & B Hydraulic controls for windlass and bow thruster (2) Deuta tachometers Alarm indicator lights Trim tabs controls Datamarine wind speed direction indicator Close circuit TV cameras Furuno 72 mi radar

Engine / Mechanical Equipment

Twin diesel MTU 16V396TB94, 3480hp each, driving KaMeWa water jets ,71 series - rebuilt (2002) ZF gears model BW755 Electronic engine controls - MTU/KaMeWa Alpha LAVAL fuel filter system Raycor fuel filters - main engines and generators Main engine exhaust new 2006 Fuel consumption: 280 gallons per hour @ 36 knots, 65 gallons per hour @ 13 knots 30hp hydraulic bow thruster Aqua Air chilled water air conditioning system (new 1997) upgrades 2007 New 2007 Village Marine Tech Watermaker 800 GPD x 2 Primary and secondary fresh water filters Microphor sewage system and holding tanks NavCon trim tabs (6) automatic bilge pumps located throughout the vessel (2) electric bilge pumps which can draw from six locations (up to 100 GPM) (2) engine room blowers Sea Recovery Osmosis Watermaker producing 1200 gallons per day 6000 GPD Blige pumps Black water tank Engine Room: Shore power hookup Watertight door for the engine room Hydraulic Power takeoff on the main engine for hydrolic power systems MTU control panels, switches indicator lights Extra filters on the MTU's VF transmissions Seajets, water jets Fuel control switch, port & Starboard Air-conditioning compressors The starboard generator has a flexible sound shield Air intake system with peerless filters coming in Engine room Haylon system is Helex 1301 Bow Thruster 40hp.

Electrical System

110/220VAC single phase 60 cycle system (2) 110 amp 120/240V shore cords - new 2005 (2) 25 KVA isolation transformers with 208V/220V boost system 12V/24V DC system 3 banks of 24V batteries, one for each engine, (2) port, (2) starboard, (6) Center and one for KaMeWa jets (1) 12V bank of batteries for ship's service (2) 12V bank of batteries for generators (2) Pro-Mariner battery chargers Capac system (2) 60kW Northern Lights generators (new 1998)

Deck & Hull

(2) oversized 300lb PLOW anchors w/200ft of chain (2) Maxwell vertical capstans on aft deck Stern passarelle boarding ladder- Manually operated Marquipt sea stairs- port & starboard - Oversized Marquipt sea crane for small boats -2 Tons Bollard cleats fore and aft Stainless Steel swim ladder (2) standoffs for swim platform - tender tie up Deck Box Under seat locker aft and forward Cushions for Bow, Aft & Flybridge, all with covers (6) fenders Fairleads on the bow (2) port, (2) Starboard Bow rail Hand rail fender rail length of salon, fairlead aft Aluminum Swim platform Swim step hookups Tender cleats Stairs leading from the aft deck down to the swim platform port & Starboard Engine room ventilation Grill on aft section Shore power goes through engine room window Deck cleats, 3.3 starboard on bow Anchor windlass Maxwell 5000 with Capston Anchor chain ½ inch plow anchors Burgee staff on bow Bow sun cushion with deck storage below Gangway on starboard side Non skid deck Bow floodlight Stereo speakers port & stbd. (2) Bow & deck courtesylights Fordeck hatch Boarding gate port & stbd. Search light stbd. Dual horns port Nav lights port & stbd Stern Flag holder

Aft Deck

(8) Overhead lights port & stbd (2) stereo speakers Wet bar with 3 stools Stainless steel sink w/hot & cold Kenmore refrigerator Storage cabinet Transom gate port & stbd. Bench seat w/cushions Closed circuit TV in overhead

Recent Upgrades

Port Main Engine - water pump seal W6 Mains 2002 - (Manny Ace) Rebuilt stb. gen - both were changed to John Deere's All exhaust hoses new All raw water intakes cleaned (Eng., Gen., A/C) Painted bottom and re-faired All blister Pain touched up Re-new all zincs (T-in tunnels) Serviced trim tabs (Hydraulics hinge pins) Re-new underwater lights (Aft)

Watersports

2 x 2007 Yamaha VX deluxe 3-person waverunners with 9hrs.

Safety & Fire Protection

Halon automatic fire extinguisher in engine room Fire extinguishers located throughout vessel
Camera monitoring system fore and aft deck Full Coast Guard safety equipment EPIRB Bell Boat
Hook (2) 8 Person Avon liferaft Orion Flairs 16' Nautica Tender w/50hp Yamaha

Remarks

One of the most outstanding values in a high speed, quality built, proven integrity motoryacht.
Ready for immediate cruising and/or redecorating to your personal taste and function. No other
yacht can do what this yacht can do or can go where this yacht can go in this price range.
Because of the waterjets, you can even beach her for a picnic on a calm day. Dreams can come
true at half the price of a lower performing competition. Call for an appointment today.

Exclusions

Glass Coffee Table in Salon, Owners personal items and tools.

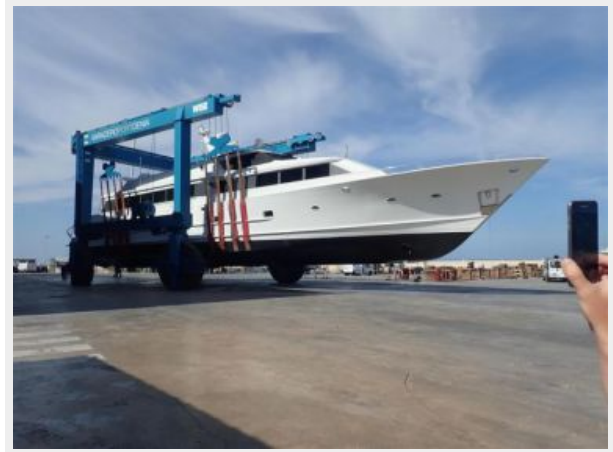
Exclusions

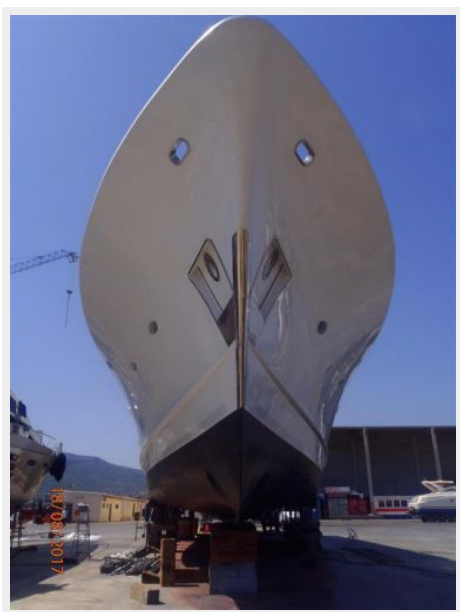
Owner's personal belongings.

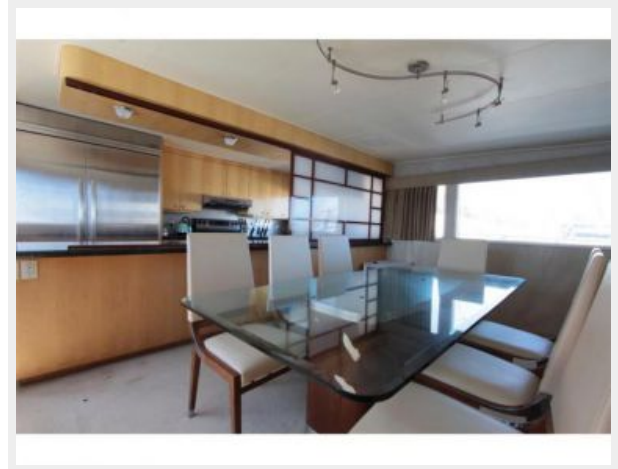
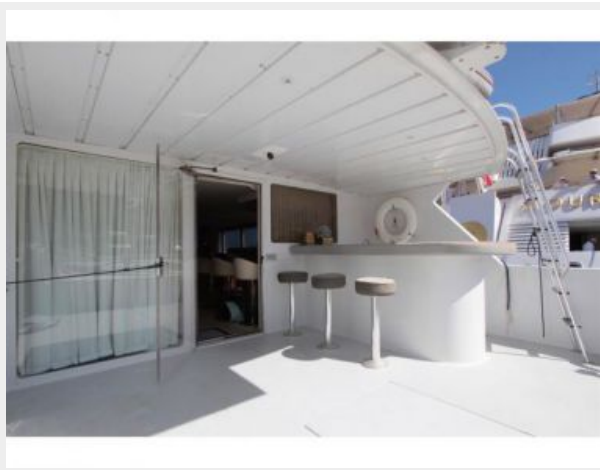
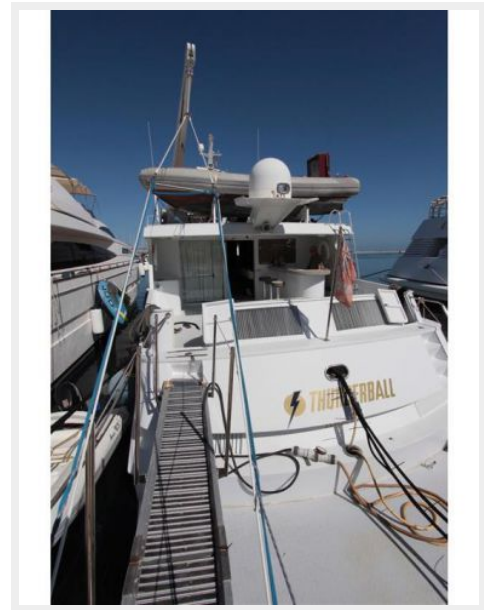
Disclaimer

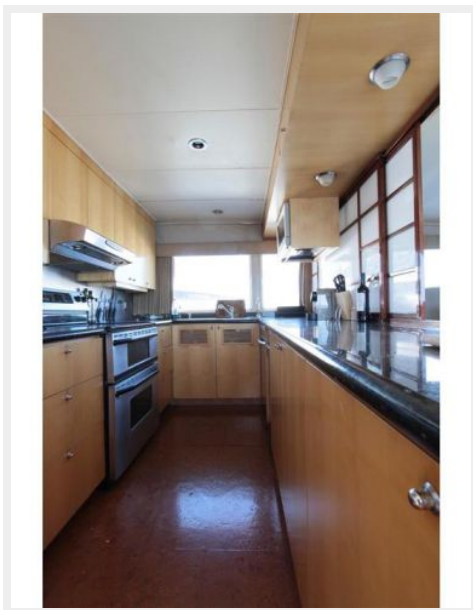
The Company offers the details of this vessel or yacht in good faith but cannot guarantee or
warrant the accuracy of this information nor warrant the condition of the vessel. A buyer should
instruct his representatives, agents, or his surveyors, to investigate such details as the buyer
desires validated. This vessel or yacht is offered subject to prior sale, price change, or withdrawal
without notice.

PHOTOS









Full Beam Master Stateroom



Master Stateroom (Port Side)



VIP Stateroom (Forward)

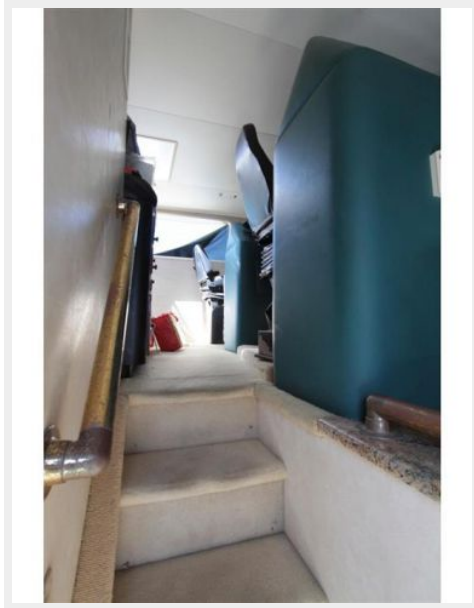


Guest Stateroom



Guest Stateroom



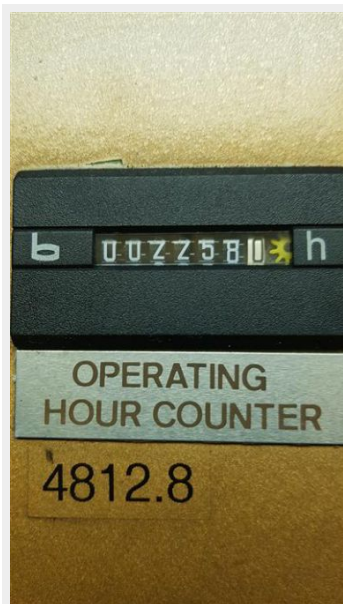


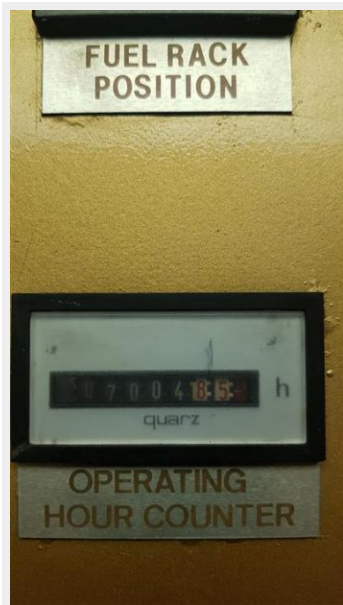
Pilothouse

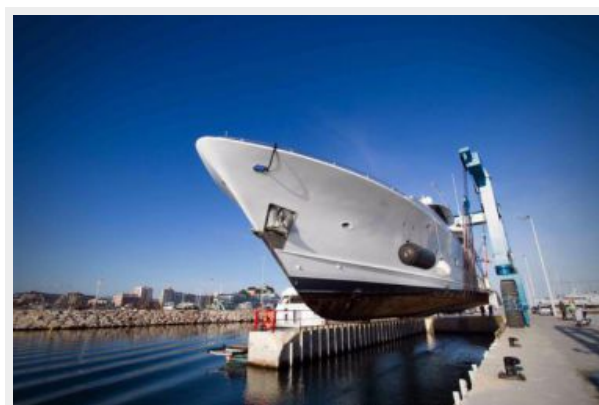
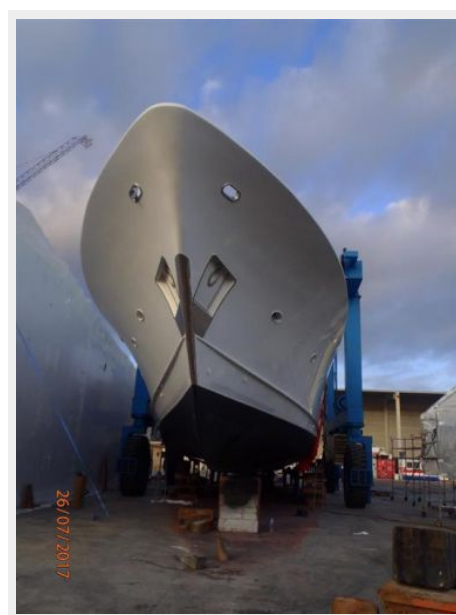


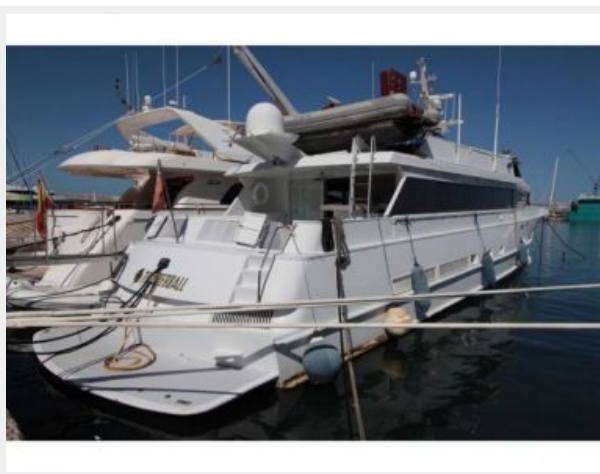
Engine Room





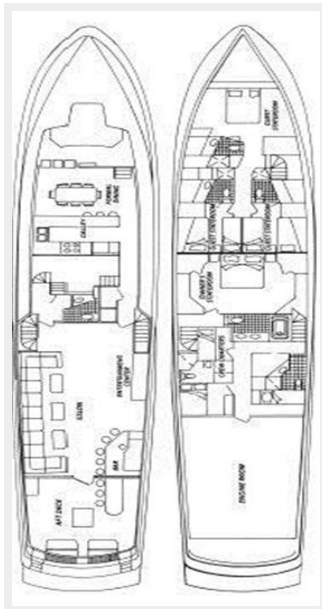




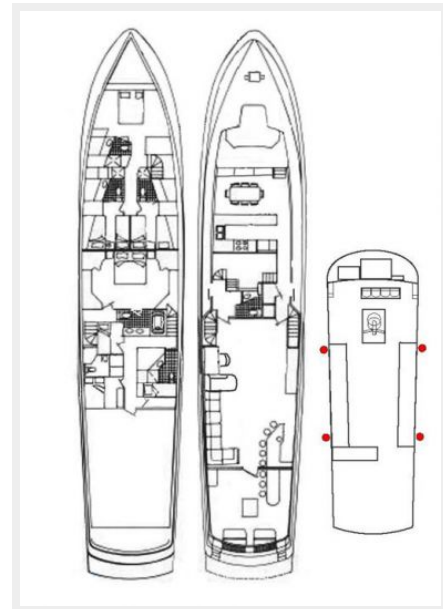




Layout



Line drawing 3 decks (1)



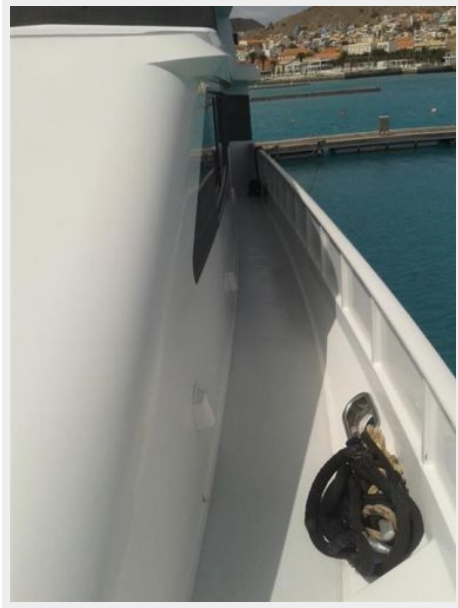
20140628_143628



20140628_145019



20140628_145045



P5050003



P5050004



P5050005



P5050007



P5050009



Passage Gibraltar 2018



PC170192



PC190222



PC190240



PC190241



CONTACTS

Andrey Shestakov, leading yacht broker of the sales department of Shestakov Yacht Sales Inc. Shestakov Yacht Sales Inc., the official representative of the Miami/Fort Lauderdale FL headquarters.

Contact details

Email:
andrey@shestakovyachtsales.com

Web: shestakovyachtsales.com/en/

Telephones

USA: **+1(954)274-4435**

Office hours

Monday – Saturday: **9:00 - 21:00 EDT**

Sunday: **closed**

Address



Harbour Towne Marina, 850 NE 3rd St,
STE 213, Dania, FL 33004