

## GOLDEN DAWN — FONTAINE PAJOT



**Builder:** FONTAINE PAJOT

**Year Built:** 2008

**Model:** Catamaran

**Price:** PRICE ON APPLICATION

**Location:** United States

**LOA:** 36' 0" (10.97m)

**Beam:** 19' 4" (5.89m)

**Min Draft:** 3' 8" (1.12m)

**Max Draft:** 3' 8" (1.12m)

**Cruise Speed:** 6 Kts. (7 MPH)

**Max Speed:** 7 Kts. (8 MPH)

Our experienced yacht broker, Andrey Shestakov, will help you choose and buy a yacht that best suits your needs **Golden Dawn — FONTAINE PAJOT** from our catalogue. Presently, at Shestakov Yacht Sales Inc., we have a wide variety of yachts available on our sale's list. We also work in close contact with all the big yacht manufacturers from all over the world.

If you would like to buy a yacht **Golden Dawn — FONTAINE PAJOT** or would like help answering any questions concerning purchasing, selling or chartering a yacht, please call **+1(954)274-4435**

---

# TABLE OF CONTENTS

---

TABLE OF CONTENTS	2
SPECIFICATIONS	3
Overview	3
Basic Information	3
Dimensions	3
Speed, Capacities and Weight	3
Accommodations	4
Hull and Deck Information	4
Engine Information	4
DETAILED INFORMATION	5
Description	5
Walkthrough	5
Electrical	5
Electronics	5
Mechanical	6
Galley	6
Sails & Rig	6
Deck	6
Disclaimer	6
Exclusions	6
Disclaimer	6
PHOTOS	8
CONTACTS	14
Contact details	14
Telephones	14
Office hours	14
Address	14

---

# SPECIFICATIONS

---

## Overview

---

2008 36 Fountaine Pajot Mahe' Golden Dawn was purchased in December 2012. Some blistering was discovered during survey, so her bottom was peeled and allowed time to dry. In May 2013 three barrier coats of Interprotect 2000 and 2 coats of bottom paint were applied, and her new owners sailed her to Maine where they spent the summer. Later that year Golden Dawn was sailed to Florida, where her owners have made a few trips to the Bahamas & FL Keys. Golden Dawn is being offered for sale due to a family illness, and provides the opportunity to buy a late model cat at a grea...

## Basic Information

---

**Category:** Catamaran

**Sub Category:** Other

**Model Year:** 2008

**Year Built:** 2008

**Country:** United States

## Dimensions

---

**LOA:** 36' 0" (10.97m)

**LWL:** 35' 0" (10.67m)

**Beam:** 19' 4" (5.89m)

**Min Draft:** 3' 8" (1.12m)

**Max Draft:** 3' 8" (1.12m)

**Clearance:** 55' 0" (16.76m)

## Speed, Capacities and Weight

---

**Cruise Speed:** 6 Kts. (7 MPH)

**Max Speed:** 7 Kts. (8 MPH)

**Displacement:** 11023 Pounds

**Water Capacity:** 71 Gallons

**Holding Tank:** 28 Gallons

**Fuel Capacity:** 55 Gallons

---

## Accommodations

---

**Total Cabins:** 2

**Total Heads:** 2

---

## Hull and Deck Information

---

**Hull Material:** Fiberglass

---

## Engine Information

---

**Engines:** 2

**Manufacturer:** Volvo

**Model:** D1

**Engine Type:** Sail Drive

**Fuel Type:** Diesel

---

# DETAILED INFORMATION

---

## Description

---

**2008 36 Fountaine Pajot Mahe'** Golden Dawn was purchased in December 2012. Some blistering was discovered during survey, so her bottom was peeled and allowed time to dry. In May 2013 three barrier coats of Interprotect 2000 and 2 coats of bottom paint were applied, and her new owners sailed her to Maine where they spent the summer. Later that year Golden Dawn was sailed to Florida, where her owners have made a few trips to the Bahamas & FL Keys. Golden Dawn is being offered for sale due to a family illness, and provides the opportunity to buy a late model cat at a great price.

## Walkthrough

---

Golden Dawn has her elevated helm to Stbd. and a U shaped aft cockpit (6'6" headroom). Her Salon (6'6" headroom) is accessed through 2 sliding glass doors and has a large U shaped dinette with windows that provide great natural lighting. A well equipped nav station to port, and her Galley is to stbd. Opening hatches are overhead and forward. Her 2 staterooms (6'1" headroom) are identical with large berth aft - hanging/storage lockers - head with very large shower. Topside she is equipped with lifelines and wide side decks, and accessing the mainsail is one step up from the main deck. Her boom is low enough to hoist or stow the main from the coach roof, and provides increased sailing performance (love that on FPs).

## Electrical

---

**AC 110 volt system** (2) 30 amp shorepower inlets (2) 50' shorepower cords with 50 amp splitter Xantrex True Charge 2 40 amp batt charger 16,000 Marine Aire / 8,000 Marine Aire reverse cycle ac/heat 6 gal water heater with loop to engine  
**DC 12 volt system** (5) AGM Group 31 House batteries and Start for port engine (105 amps each) (1) Lead acid Group 31 Start battery for stbd engine (2) 115 amp Mitsubishi alternators (2) Solar Panels (200 watts each) with Blue Sky MPTT Controller (4) Johnson Bilge Pumps (600 GPM each) 1 kw West Marine Inverter with 2500 watt surge All lighting in cabin & cockpit are LED

## Electronics

---

Furuno NavNet 9" Plotter with 30nm Radar Furuno Navtex NX-300 Furuno GPS/WAAS GP-32 Furuno NavPilot 511 Hydraulic Autopilot Furuno F-503 Depth with wind indicator ACR 406 EPIRB Uniden UM 380 VHF with DSC Uniden Atlantis 270 VHF (handheld) Standard HX 2608 VHF (handheld) Orion 18" TV

---

## Mechanical

---

(2) Volvo D1 20hp - Port 2500 hrs / Stbd 2200 hrs (2) Volvo MS 130-B Saildrives with 3 blade folding propellers Espar 5 kw Diesel Heater 6 gal Water Heater with loop from engine Marine Aire 16,000 and 8,000 A/Cs (reverse cycle) (2) Jabsco Manual Heads with Y valves

---

## Galley

---

Eno 3 burner cooktop with oven (2) 5 lb Propane tanks Isotherm Refrigerator Microwave oven

---

## Sails & Rig

---

Incidences Mainsail in good shape with stack pack (batten pockets & leech were re sown)  
Incidences Furling Genoa with Fancor roller furler (2) Harken 40 Primary winches with Spinlock clutches (2) Spinlock clutches for halyards on mast 10' Mainsheet traveler aft of cockpit

---

## Deck

---

Lofrans Cayman 88 Windlass with remote Rocna 20 Anchor (44lb) with 130' 3/8 BBB Danforth / 30lb CQR with 300' 5/8 rode Zodiac Open Sea 6 man Liferaft (needs re certification) Full sunscreen enclosure for aft cockpit and Full eisnglass enclosure for aft cockpit (3) 10" 12 volt cabin fans Plastimo Contest compass 6 gal water heater with loop from engine Manual Bilge pump

---

## Disclaimer

---

The Company offers the details of this vessel in good faith but cannot guarantee or warrant the accuracy of this information nor warrant the condition of the vessel. A buyer should instruct his agents, or his surveyors, to investigate such details as the buyer desires validated. This vessel is offered subject to prior sale, price change, or withdrawal without notice.

---

## Exclusions

---

Owner's personal belongings.

---

## Disclaimer

---

The Company offers the details of this vessel or yacht in good faith but cannot guarantee or warrant the accuracy of this information nor warrant the condition of the vessel. A buyer should instruct his representatives, agents, or his surveyors, to investigate such details as the buyer

desires validated. This vessel or yacht is offered subject to prior sale, price change, or withdrawal without notice.

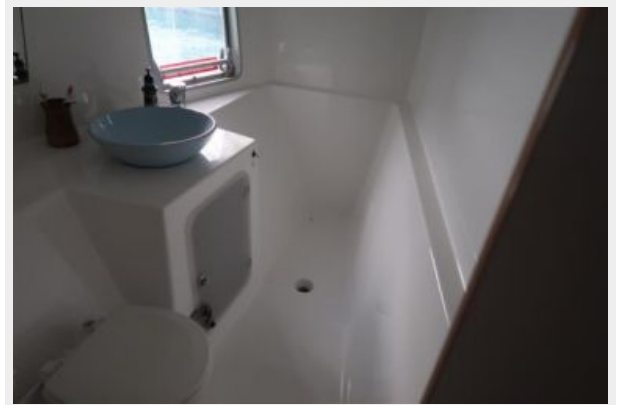
# PHOTOS

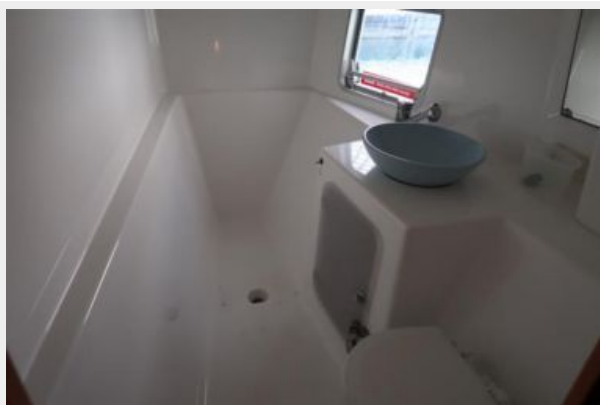


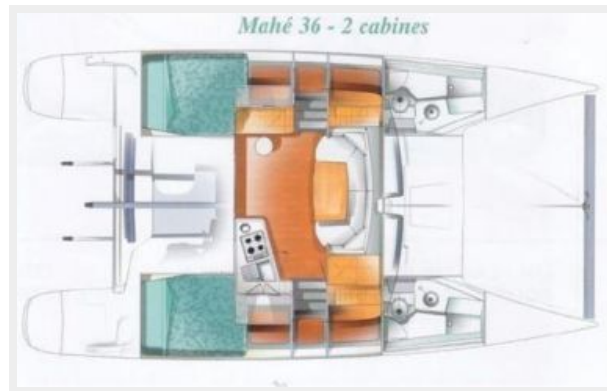












---

# CONTACTS

---

Andrey Shestakov, leading yacht broker of the sales department of Shestakov Yacht Sales Inc. Shestakov Yacht Sales Inc., the official representative of the Miami/Fort Lauderdale FL headquarters.

---

## Contact details

---

Email: [andrey@shestakovyachtsales.com](mailto:andrey@shestakovyachtsales.com)

Web: [shestakovyachtsales.com/en/](http://shestakovyachtsales.com/en/)

---

## Telephones

---

USA: +1(954)274-4435

---

## Office hours

---

Monday – Saturday: **9:00 - 21:00** EDT

Sunday: **closed**

---

## Address

---



Harbour Towne Marina, 850 NE 3rd St,  
STE 213, Dania, FL 33004