

## CASTING COUCH — SEA RAY



**Builder:** SEA RAY

**Year Built:** 2003

**Model:** Motor Yacht

**Price:** PRICE ON APPLICATION

**Location:** United States

**LOA:** 56' 0" (17.07m)

**Beam:** 16' 0" (4.88m)

**Max Draft:** 4' 6" (1.37m)

Our experienced yacht broker, Andrey Shestakov, will help you choose and buy a yacht that best suits your needs **Casting Couch — SEA RAY** from our catalogue. Presently, at Shestakov Yacht Sales Inc., we have a wide variety of yachts available on our sale's list. We also work in close contact with all the big yacht manufacturers from all over the world.

If you would like to buy a yacht **Casting Couch — SEA RAY** or would like help answering any questions concerning purchasing, selling or chartering a yacht, please call **+1(954)274-4435**

---

# TABLE OF CONTENTS

---

TABLE OF CONTENTS	2
SPECIFICATIONS	3
Overview	3
Basic Information	3
Dimensions	3
Speed, Capacities and Weight	3
Accommodations	3
Hull and Deck Information	4
Engine Information	4
DETAILED INFORMATION	5
Manufacturer Provided Description	5
Exclusions	5
Disclaimer	5
PHOTOS	6
Manufacturer Provided Image	11
Manufacturer Provided Image	11
Manufacturer Provided Image	11
Manufacturer Provided Image	11
CONTACTS	12
Contact details	12
Telephones	12
Office hours	12
Address	12

---

# SPECIFICATIONS

---

## Overview

---

### Key Features

- Yacht controller
- Bow & stern thruster
- Hydraulic platform
- Davit on bow
- Updated Raymarine chartplotter
- Watermaker

## Basic Information

---

**Category:** Motor Yacht

**Model Year:** 2003

**Year Built:** 2003

**Country:** United States

## Dimensions

---

**LOA:** 56' 0" (17.07m)

**Beam:** 16' 0" (4.88m)

**Max Draft:** 4' 6" (1.37m)

## Speed, Capacities and Weight

---

**Displacement:** 50000 Pounds

**Water Capacity:** 200 Gallons

**Holding Tank:** 68 Gallons

**Fuel Capacity:** 800 Gallons

## Accommodations

---

**Total Berths:** 8

**Total Heads:** 2

---

## Hull and Deck Information

---

**Hull Material:** Fiberglass

**Hull Configuration:** Modified Deep Vee

---

## Engine Information

---

**Engines:** 2

**Manufacturer:** MAN

**Engine Type:** Inboard

**Fuel Type:** Diesel

---

## DETAILED INFORMATION

---

### Manufacturer Provided Description

---

The Sea Ray 560 Sedan Bridge combines the pure luxury and highly functional technology that is sought after by discerning yachtsmen around the world. In the salon, large windows welcome in the outdoors and Ultraleather sofas provide comfortable space to stretch out and relax. The cocktail table adjusts to dining height and can move to either sofa. A 25-inch color television, VCR and Bose stereo system are hidden behind maple paneled pocket doors in the starboard aft bulkhead. In the master stateroom, there's a queen-size pedestal bed with innerspring mattress, custom coordinated linens, TV / VCR / radio combo and Bose stereo, plus generous storage under the bed, as well. The starboard stateroom features a full-size bed with innerspring mattress, two large storage drawers under the bed, a hanging locker with interior light, and a built-in desk / vanity with Corian countertop, mirror, five drawers and a cushioned seat. Guests also enjoy a color TV / VCR / radio combo. With upper and lower twin bunks, the portside stateroom is perfect for children or overnight guests, and also includes its own TV / VCR / radio combo. The washer / dryer is conveniently located here. On deck, the forward bridge area of the 560 Sedan Bridge provides a wonderful place for passengers to relax and enjoy the scenery. The refreshment center with full wetbar, refrigerator and icemaker offers unlimited snack options. Through the starboard transom door, molded steps lead to the extended swim platform, which has built-in brackets to hold a personal watercraft or tender. Transom fender storage keeps the stern shipshape. In case of fish fever, the cockpit has four rod holders and an optional transom live baitwell system. A convenient gas-assisted service hatch in the cockpit sole provides easy access to the lazaret and insulated engine room via a stainless steel ladder. If desired, the lazaret can be converted to crew quarters.

### Exclusions

---

Owner's personal belongings.

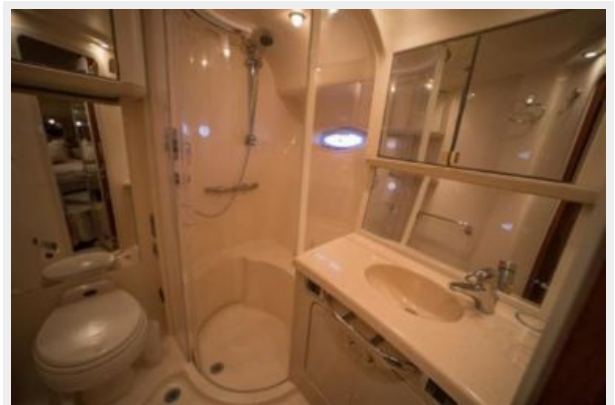
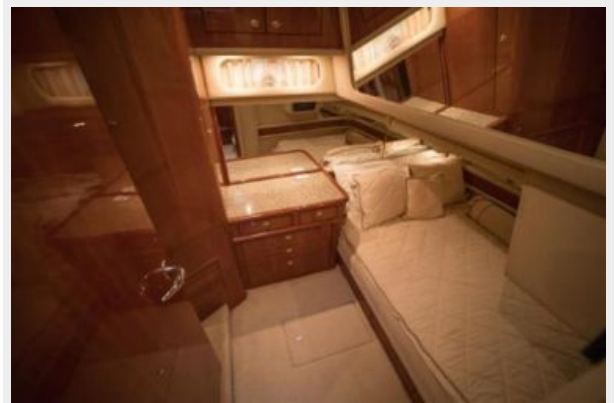
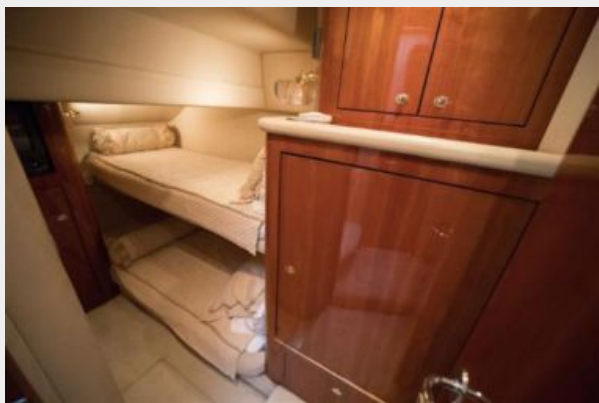
### Disclaimer

---

The Company offers the details of this vessel or yacht in good faith but cannot guarantee or warrant the accuracy of this information nor warrant the condition of the vessel. A buyer should instruct his representatives, agents, or his surveyors, to investigate such details as the buyer desires validated. This vessel or yacht is offered subject to prior sale, price change, or withdrawal without notice.

# PHOTOS







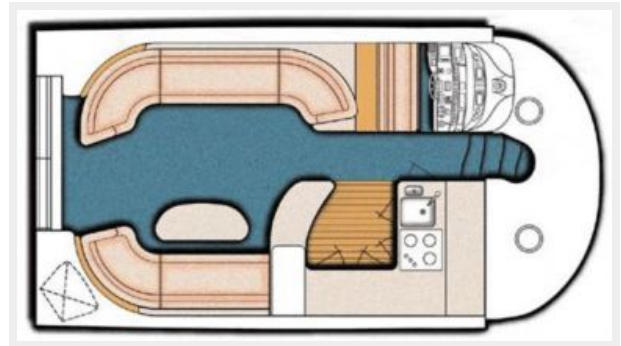




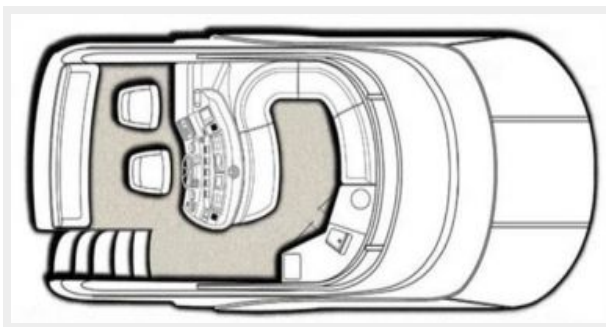




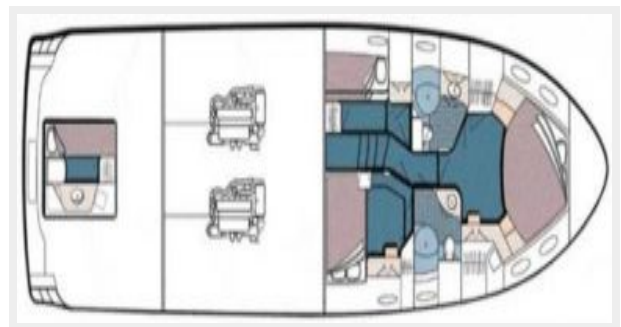
Manufacturer Provided Image



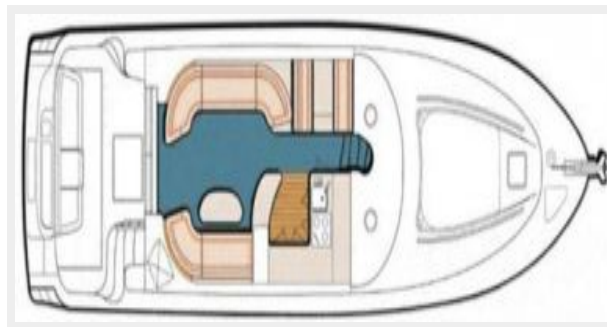
Manufacturer Provided Image



Manufacturer Provided Image



Manufacturer Provided Image



---

# CONTACTS

---

Andrey Shestakov, leading yacht broker of the sales department of Shestakov Yacht Sales Inc. Shestakov Yacht Sales Inc., the official representative of the Miami/Fort Lauderdale FL headquarters.

---

## Contact details

---

Email: [andrey@shestakovyachtsales.com](mailto:andrey@shestakovyachtsales.com)

Web: [shestakovyachtsales.com/en/](http://shestakovyachtsales.com/en/)

---

## Telephones

---

USA: +1(954)274-4435

---

## Office hours

---

Monday – Saturday: **9:00 - 21:00** EDT

Sunday: **closed**

---

## Address

---



Harbour Towne Marina, 850 NE 3rd St,  
STE 213, Dania, FL 33004