

## NATALIA — AZIMUT



**Судостроитель:** [AZIMUT](#)

**Год постройки:** 1996

**Модель:** Траулер

**Цена:** **ЦЕНА ЯХТЫ ПО ЗАПРОСУ**

**Местонахождение:** United States

**Длина общая:** 100' 0" (30.48m)

**Ширина:** 21' 7" (6.58m)

**Мин. осадка:** 6' 5" (1.96m)

**Макс. осадка:** 6' 5" (1.96m)

**Крейс. скорость:** 18 Kts. (21 MPH)

**Макс. скорость:** 24 Kts. (28 MPH)

Купить **Natalia — AZIMUT** а также выбрать подходящую вам яхту из нашего каталога яхт вам поможет опытный яхтенный брокер Андрей Шестаков. На сегодняшний день компания **Shestakov Yacht Sales Inc.** имеет большое количество яхт в собственном списке продаж, а также тесно сотрудничает со всеми крупными яхтенными производителями по всему миру.

Для того чтобы купить яхту **Natalia — AZIMUT** а также проконсультироваться по любому вопросу связанному с покупкой, продажей, чартером яхт позвоните по телефону **+7(918)465-66-44**.

# ОГЛАВЛЕНИЕ

ОГЛАВЛЕНИЕ	2
ХАРАКТЕРИСТИКИ	4
Обзор	4
Основная информация	4
Размеры	4
Скорость, вместимость и масса	4
Размещение	5
Корпус и палуба	5
Информация о двигателе	5
ПОДРОБНОЕ ОПИСАНИЕ	6
Description	6
Accommodations	6
Main Salon	6
Dining Salon	7
Galley and Laundry	8
Master Stateroom	9
Master Head	10
VIP Stateroom	10
VIP Head	11
Guest Staterooms	12
PORT GUEST HEAD	12
STARBOARD GUEST HEAD	13
CREW QUARTERS	13
Pilothouse	14
Fly Bridge	15
Aft Deck	17
Topside	17
Super structure	18

---

Mechanical	19
Exclusions	21
Disclaimer	21
Исключения	21
Отказ от ответственности	21
ФОТОГРАФИИ	22
КОНТАКТЫ	39
Контактная информация	39
Телефоны	39
Время работы	39
Адрес	39

# ХАРАКТЕРИСТИКИ

## Обзор

*OWNER SAYS "GET HER SOLD!"* *Natalia* is a 1996 Azimut 100' Jumbo Flybridge Motor Yacht located in Jacksonville, FL. Designed and built in Viareggio, Italy. *Natalia* has sleek lines and is equipped with numerous amenities and custom, luxury décor. With exterior teak decks, a hot tub on the flybridge, a large dining salon, four master and guest staterooms each with en-suite head, a day head, a fully equipped galley, Captain and crew quarters with en-suite heads, and a large salon with a bar and entertainment center, *Natalia* is ready for her next owners and their guests. The engine room on *Natalia* is well organized, and the lazarette provides extra space and storage. *Natalia* is maintained by a captain. The owner is willing to offer partial secured financing to qualified buyers. Ask for details.

## Основная информация

Тип судна: Траулер

Модельный год: 1996

Год постройки: 1996

Страна: United States

## Размеры

Длина общая: 100' 0" (30.48m)

Длина по ватерлинии: 83' 5" (25.43m)

Ширина: 21' 7" (6.58m)

Мин. осадка: 6' 5" (1.96m)

Макс. осадка: 6' 5" (1.96m)

Трапы: 33' 6" (10.21m)

## Скорость, вместимость и масса

Крейс. скорость: 18 Kts. (21 MPH)

Макс. скорость: 24 Kts. (28 MPH)

Водоизмещение: 221000 Pounds

Вместимость воды: 1000 Gallons

Вместимость сточного бака: 140 Gallons Объем топливного бака: 3750 Gallons

## Размещение

---

**Всего кают:** 5

**Всего коек:** 6

**Всего ком. состава:** 4

## Корпус и палуба

---

**Материал корпуса:** Fiberglass

## Информация о двигателе

---

**Двигатели:** 2

**Производитель:** MTU

**Модель:** 16V-2000-M90

**Тип двигателя:** Inboard

**Тип топлива:** Diesel

---

# ПОДРОБНОЕ ОПИСАНИЕ

---

## Description

---

*Natalia* is a 1996 Azimut 100' Jumbo Flybridge Motor Yacht located in Jacksonville, FL. Designed and built in Viareggio, Italy. *Natalia* has sleek lines and is equipped with numerous amenities and custom, luxury décor. With exterior teak decks, a hot tub on the flybridge, a large dining salon, four master and guest staterooms each with en-suite head, a day head, a fully equipped galley, Captain and crew quarters with en-suite heads, and a large salon with a bar and entertainment center, *Natalia* is ready for her next owners and their guests. The engine room on *Natalia* is well organized, and the lazarette provides extra space and storage. *Natalia* is maintained by a captain.

## Accommodations

---

This gorgeous vessel is ready for use by her next owner. She has four guest staterooms plus two crew staterooms, each with en-suite head. A formal dining room, with seating for 8, is forward of the salon, then the galley and crew quarters are forward of the dining salon. The master stateroom has a king berth, VIP stateroom has a queen berth, and the two guest staterooms each have 2 twin berths.

## Main Salon

---

The main salon is perfect for entertaining or just relaxing while onboard.

- Teak and ebony planking on aft section; dark wide planked wood flooring in main area of salon with decorator area rug
- Sliding door entry with decorator lined drapes from aft deck
- Hinged door from dining salon to starboard
- Varnished wood paneling, cabinets and padded vinyl overhead panels
- (8) lights recessed in headliner at aft section
- (16) lights recessed in headliner in main section
- Fixed side windows with blinds and decorator fabric Roman shades
- Bar with stainless steel foot bar, refrigerator and ice maker under marble countertop

- Outboard to starboard is a locking storage locker, with roll top, marble counter, stainless steel sink, glass and bottle storage, air conditioning control panel
- Cabinet opposite bar with 3 shelves and 2 doors; air conditioning control panel
- Cabinet with 2 doors with burled wood tops and air conditioning unit at forward end with brass and crystal table lamp on each side
- Settee with table at each end
- Cabinet with 4 drawers and cabinets at each end
- Intercom telephone
- Mirrors on forward bulkhead
- Coffee table in center with burled wood top, divides into 3 separate units
- Day head compartment forward to port with marble sole, marble countertop, 3 lights recessed in overhead, lacquer paneled overhead and bulkheads, porcelain sink, mirrored outboard panel above vanity, storage cabinets under vanity, marine head with hinged door, marble sole, recessed lights in overhead, exhaust fans overhead
- Smoke/fire detector on port aft overhead
- Animal print settees to both port and starboard
- Neutral leather recliners to both port and starboard
- Entertainment center forward with curved screen TV and stereo system with storage cabinets and drawers with burled wood top

## Dining Salon

---

Located forward of main salon; entry via main salon through forward starboard companionway and from galley aft to port.

- Hardwood sole
- Padded vinyl headliner
- Varnished wood dining table with 2 arm chairs and 6 side chairs
- (6) lights recessed in headliner
- (6) lights recessed in drop panel over dining table
- Cabinets for China and glass storage

- China cabinet
- Fixed side windows with blinds and decorator fabric Roman shades
- Smoke/fire detector in headliner
- (2) Sony speakers in headliner; Intercom telephone
- Air conditioning controls
- Mirrored bulkheads

## Galley and Laundry

---

Forward of the dining salon with hinged entry door from dining salon to port, and through watertight door to port deck is the galley, laundry, and crew quarters.

- Lacquer-paneled overhead and bulkheads
- (8) recessed lights in headliner
- Molded table with bench seat with storage under seat
- Marble top L-shaped counter with cabinets over and under
- Filtered exhaust fan above stovetop
- Double stainless steel sink w/Décor nozzle and cabinets under
- (5) drawers alongside oven
- Security system monitor for aft deck camera
- Circuit breaker panel in port locker
- Air conditioning control panel
- (4) steps down to crew quarters with 3 courtesy lights
- Smoke/fire detector in headliner
- Fixed side window with blinds
- Intercom telephone
- Custom refrigeration: Seafrst Class A S/S freezer and refrigerator boxes w/LED temperature and monitoring controls
- Black ceramic tile flooring



- Whirlpool Heavy Duty Thin Twin Stackable Washer/Dryer
- Whirlpool Accubake system oven
- Kitchenaid glass stovetop w/4 burner 220 VAC w/induction burners
- GE Profile convection oven
- Whirlpool Gold Quiet Partner dishwasher

Additional Refrigeration/Freezer/Ice Maker: Raritan icemaker in salon, Wine Refrigerator on bridge, Igloo deep freezer in lazarette

## Master Stateroom

---

The four staterooms are accessed via circular stairs in the companionway between the main salon and the dining salon on the main deck. The staircase is mirrored and has accent courtesy lights.

- Entry via companionway door, mirror port and starboard of door
- Decorator fabric curtains, bedding and pillows
- Padded vinyl headliner
- (9) recessed lights in headliner
- Rope courtesy lighting under berth and port settee
- Varnished wood paneling on bulkheads
- Padded decorator fabric headboard
- King size berth with 4 drawers under the berth
- (2) nightstands with 3 drawers, table lamps, intercom telephone
- Vanity and cabinets with stool and cosmetic lift-top vanity
- (2) port and (2) starboard opening portlights with blinds
- Stark safe in starboard cabinets
- Settee with storage to port
- Locking walk-in closet
- Bose stereo / DVD player

- Sharp flat screen TV
- Ipod docking station
- Dark wide planked wood flooring

## Master Head

---

The master head is accessed via a hinged door to starboard.

- Marble tile sole
- Marble vanity top with cabinets, drawers under, (2) porcelain sinks
- Mirrored bulkhead above vanity
- Lockers, inboard and outboard of vanity
- Electric head
- (2) opening portlights with blinds
- Lacquer-paneled bulkheads and headliner
- (3) lights recessed in headliner
- (4) lights in soffit above vanity
- Shower stall with Plexiglas door, teak grating, (7) fixed torso showerheads, handheld showerhead
- (2) Plexiglas towel bars

## VIP Stateroom

---

The en-suite VIP stateroom is accessed via the companionway, forward.

- Hardwood sole
- Padded vinyl headliner
- (6) recessed lights in headliner
- (2) lights recessed in soffit over berth

- Queen size berth with 4 drawers and storage under the berth
- Padded decorator fabric headboard
- (2) nightstands with 2 drawers, table lamps, intercom telephone
- Vanity and cabinets with stool and cosmetic lift-top vanity
- Hanging locker with light, circuit breaker panel outboard of locker
- Port and starboard opening portlights with blinds
- Air conditioning control panel
- Settee with storage under cabinets at each end
- Smoke detector in headliner
- Stereo speakers overhead
- Gray water and black water discharge pumps and bilge suction line under sole
- Air conditioning unit under berth
- Decorator fabric curtains, bedding and pillows
- Bose stereo / DVD player
- Magnavox flat screen TV - starboard side

## VIP Head

---

The en-suite VIP stateroom head is accessed via a hinged door to port.

- Marble tile sole
- Lacquer-paneled bulkheads and headliner
- (4) lights recessed in headliner
- L-shaped marble top vanity with porcelain sink, cabinets under
- Opening portlights with blinds
- Mirror on aft bulkhead above vanity
- Electric head, outboard, with storage lockers above

- Shower stall with Plexiglas door, teak grating, handheld showerhead, recessed light overhead
- Overhead exhaust fan

---

## Guest Staterooms

---

The port and starboard guest staterooms are amidships across from each other and are accessed via hinged doors in the companionway.

- Hardwood sole
- Padded vinyl headliner
- (8) recessed lights in headliner
- Smoke detector in headliner
- Port and starboard single berth with 2 drawers under each
- Rope courtesy lighting under berths
- Decorator fabric padded head and side boards
- Night table with 3 drawers between berths
- Intercom telephone
- Hanging locker with light
- Circuit breaker control panel, outboard of hanging locker
- Gray water and black water discharge panels
- Marked discharge valves
- Air conditioning unit with control panel
- Decorator fabric curtains, bedding and pillows

---

## PORT GUEST HEAD

---

The en-suite guest state room head is accessed via a hinged door.

- Lacquer-paneled bulkheads and headliner
- Marble tile sole

- Marble top vanity with porcelain sink and cabinets under
- Mirror on aft bulkhead above vanity
- Electric head with storage cabinets
- Opening covered portlight with blinds
- (3) lights recessed in headliner
- Exhaust fan in headliner
- Plexiglas towel bar
- Open shelves, inboard of vanity
- Shower stall with Plexiglas door, teak grating, handheld showerhead, recessed light overhead

## STARBOARD GUEST HEAD

---

The en-suite guest state room head is accessed via a hinged door.

- Lacquer-paneled bulkheads and headliner
- Marble tile sole
- Marble top vanity with porcelain sink and cabinets under
- Mirror on cabinet over sink
- Electric head with storage cabinets
- Opening covered portlights with blinds
- (4) lights recessed in headliner
- (2) Plexiglas towel bars
- Open shelves, inboard of vanity
- Shower stall with Plexiglas door, teak grating, handheld showerhead, opening port with deadlight, recessed light overhead

## CREW QUARTERS

---

(4) steps down and forward of galley

- (2) lights recessed in companionway overhead
- Hatch with folding stainless steel ladder, forward for access to foredeck
- Lockers
- Vinyl sole
- Lacquer-paneled bulkheads and headliner
- Crew stateroom to starboard with upper and lower berths, hanging lockers, (2) drawers, (3) lights recessed in padded vinyl headliner, reading lights at each berth, intercom telephone, Cruisair controls, drawers and storage under lower berths, opening portlight with curtain above berths
- Crew head compartment forward with access from cabin, handheld shower unit with overhead shower curtain, electric head, marble top vanity with sink and storage cabinets under, outboard storage locker, teak grating on deck with shower drain, (2) light and (1) blower recessed in headliner, lights recessed in headliner, intercom telephone, storage
- Smoke/fire detector in headliner
- Captain stateroom to port, with berth, hanging locker with safe, (2) drawers, aft, reading light at berth, (2) drawers and storage under berth
- Captain head compartment forward with access from cabin, with vinyl tile sole, marble top vanity with porcelain sink, cabinet under, (2) lights recessed in headliner, intercom telephone, storage locker, outboard of electric head. Shower stall with teak grating, Plexiglas door, overhead light, hand-held shower unit, mirror on forward bulkhead above vanity, smoke detector in headliner

## Pilothouse

---

The pilothouse is accessed from steps in the companionway between the main salon and the dining salon on the main deck or via steps leading down from the flybridge through a sliding door.

- Teak and ebony deck
- Vinyl headliner
- (9) lights recessed headliner
- (5) teak steps down to main deck with (3) courtesy lights
- (5) teak steps up to fly bridge with (3) courtesy lights

- Burlled wood countertops, varnished wood paneling, padded vinyl countertop below windshields
- Fixed windows
- (3) fixed windshields
- Settee, aft port, with leather cushions and stainless steel foot rest
- Helm seat with leather cushions on stainless steel pedestal with footrest
- Plexiglas signal flag locker
- (5) cabinet doors in aft bulkhead
- Chart table, port, with Plexiglas top, sliding chart drawer
- MTU electronic engine controls
- Electronics locker on helm console with: Cruisair SMX II controls, Skanti TRP-7000 SSB radio, Furuno FCV-582L color video sounder, Video engine room monitor, Urmet Intercom, White Star compass, Kobelt rudder angle indicator, Logic relative wind speed and direction indicator, Trim tab indicator, Furuno FAP-330 autopilot, Rayline search light control, Digital Marine Electronics Northstar 6100i GPS plotter, ICOM IC-M604 VHF radio, Anschutz Gyro repeater, HYSY bow thruster control, Furuno 72-mile color radar
- Engine instruments: oil pressure gauge, gear oil pressure, engine water temperature, gear oil temperature, tachometer for port and starboard engine
- Water tank gauge
- Fuel level gauge
- AC/DC distribution panel, port of helm console, with switches for: navigation lights, black water, gray water and bilge water pumps, engine room ventilation, auxiliary services, AC volt and ammeters, house and starting battery meters, fire alarms display and controls
- Switch panel at helm console for port and starboard windlasses, washer pump, auxiliary controls, steering pump, wiper controls, port and starboard main engine alarm and controls, intercom controls, port and starboard flap controls

## Fly Bridge

---

The flybridge is conveniently accessed via molded fiberglass steps with teak treads and welded stainless steel railing from the aft deck, or via steps from the pilothouse.

- Vinyl-covered cushions on deck over molded deck gratings
- Molded fiberglass hot tub
- Deck scupper, port and starboard
- Stern light
- Stainless steel ensign staff
- Weather hatch stowed alongside safety railing
- (5) courtesy lights in aft deck stairway
- Security camera on aft deck
- Entry via pilothouse through welded stainless steel glass door/hatch unit
- Molded fiberglass decks with non-skid surface
- Aluminum framed Plexiglas windscreen
- Molded fiberglass console, port with vinyl cover
- Stainless steel spoke wood-rimmed steering wheel
- Port and starboard engine gauges for: engine, oil pressure, gear oil, engine water temperature, tachometers
- Furuno FAP-330 autopilot
- Bow thruster controls
- Rayline searchlight control
- Rudder angle indicator
- Trim level gauge
- Zenith compass
- VHF remote
- Intercom horn
- (3) courtesy lights
- MTU electronic controls
- Control panel with switches and indicators for: port and starboard windlass, washer pump.



auxiliary controls, steering pump, port and starboard main engine alarm and controls, intercom controls, port and starboard flap control

- Molded fiberglass bench seat with cushion at helm console and storage under seat
- Sunbrella cushions
- Exterior deck carpet
- Teak tables on stainless pedestals
- Wine cooler refrigerator
- Grill with prep area and wash sink
- Bimini top

## Aft Deck

---

The teak aft deck is a wonderful exterior entertainment space of approximately 1,100 SF.

- Teak plank over molded fiberglass decks
- Watertight hatch to lazarette
- Locking gate, centerline aft
- Fire station, aft to starboard of gate
- Passarelle control panel, port of transom gate
- Dockside water inlet and wash-down connections in fire station locker
- CO2 manual discharge valve, starboard aft
- Port and starboard deck capstans with foot switches
- Welded stainless steel bit, port and starboard
- Deck scupper, port and starboard aft outboard corners
- Shore side power inlets, port of transom bulwark with 100A/250V inlet and 50A/250V inlet
- Teak table on stainless steel pedestal with chairs
- (13) lights recessed into headliner with (2) stereo speakers

## Topside

---

- Anchor chafe plate with hawse pipes
- Stainless steel portholes, (6) port and (9) starboard
- Stainless steel spring line hawse pipes with bit, port and starboard
- Stainless steel roller chocks in bulwarks on port and starboard aft corner
- (5) steps with teak treads molded into transom with removable hand rails
- Transom platform molded into hull
- Hand-held shower unit in recessed locker on transom, starboard
- Marquip roller boarding ladder
- Forward chain locker with washdown
- Lofrans, Project X4 Vertical 24 VDC Windlass with wired remote controls
- Pulpit with double davit anchor roller, chain stopper, and S/S striker plate; (2) S/S plow anchors with approximately 1,000' 7/16" high tensile chain

## Super structure

---

- Molded fiberglass with foam core, molded off-white gelcoat exterior
- Courtesy lights for fore and side decks
- Stainless steel hand rails and opening hatch into forward cabin trunk
- Port and starboard storage locker in forward cabin trunk
- Port and starboard fire station lockers with hose and nozzle
- Opening port on port and starboard forward cabin trunk
- Watertight doors, port, providing access to galley and engine room
- Watertight door, starboard, providing access to main salon companionway
- Fuel fill deck plates in Plexiglas door lockers on cabin sides, (2) port and (2) starboard
- Water fill deck plate, port of cabin
- Fixed tempered glass window, port and starboard of cabin structures
- Courtesy lights under bridge deck overhang, (7) port and (7) starboard

- Storage locker in starboard aft section of house structure
- Storage locker under aft stairway to bridge deck

## Mechanical

---

Access to the engine room is via a watertight door on the main deck, port, aft.

- Watertight door and welded aluminum ladder
- Welded stainless steel dry risers with insulated jackets connecting to water injected exhaust pipe thru vessels bottom
- Low rpm by-pass with valve through topsides
- Sea water intakes for main engines under deck plates in center bilge with bronze thru hulls and gate valves and strainers in center bilge, forward, with manifold for air conditioning, (2) generators, head pump, fire pump and water maker
- Vernalift fiberglass mufflers with double-clamped hose and thru hull with gate valve, port and starboard for generators
- (2) 220-volt bilge/fire pumps, port forward with suction manifold
- Manual emergency bilge pump, port
- (6) dual-tube fluorescent lights overhead
- Xintex fuel vapor monitor on aft bulkhead
- (4) Cruisair units, port outboard, with circuit breaker panel
- Cruisair - port side (3 of 4 units are new in 2011)
- Cruisair - stbd side (2 of 4 units are new in 2010-11)
- Newer air handlers installed in galley and crew quarters
- (3) refrigeration compressors, port
- Dual Racor fuel filters for main engines
- Hydraulic steering pump and manifold, port aft
- 220-volt exhaust fan, aft

- Intake fan, forward
- Fuel level eye-level gauge, port and starboard
- Port and starboard fuel tank aft, with cross-connect to equalize
- Fuel manifold, centerline on aft bulkhead, with 24-volt and manual fuel transfer pumps, pneumatic emergency shut-off valves
- (12) 2-volt starting batteries in covered box, centerline under deck plates
- (4) Cruisair air conditioning, condensing units, starboard
- Electric control panel, port, to distribute 220 volts AC and 24 volts DC
- Fuel management gauges and breakers in starboard panel
- Main and service battery switches in starboard panel
- Bow Thruster hydraulic pump PTO on starboard transmission
- (2) 220-volt air conditioning seawater pumps with manifolds, starboard forward
- (2) 24-volt Mastervolt battery chargers mounted starboard forward
- 110/220 volt shore power transformer
- Pneumatic shutters on all air intakes, actuated by fire detection system
- (3) 12-volt service batteries in covered boxed on generator platform
- Bow thruster hydraulic oil tank and filter on forward bulkhead
- 220-volt water pressure pump under generators with filter
- 24-volt sanitary pump under generators
- Racor generator fuel filters under generator platform
- Video camera on overhead
- Main engine instrument panels on overhead above each engine with start/stop switches, tachometers, gear box, engine oil temperature and pressure gauges, water temperature gauges
- 45 kw Onan Admiral series (55MCGGA) generator with sound shield and hour meter, port, 2,284.2 hours (S/N J940552981)
- 25 kw Onan Admiral series (25MDL6Z) generator with sound shield and hour meter, starboard, 7,685.3 hours (S/N D953359005)

---

## Exclusions

---

Certain artwork and owner's personal effects are excluded.

---

## Disclaimer

---

The Company offers the details of this vessel in good faith but cannot guarantee or warrant the accuracy of this information nor warrant the condition of the vessel. A buyer should instruct his agents, or his surveyors, to investigate such details as the buyer desires validated. This vessel is offered subject to prior sale, price change, or withdrawal without notice.

---

## Исключения

---

При продаже яхты исключаются личные вещи владельца.

---

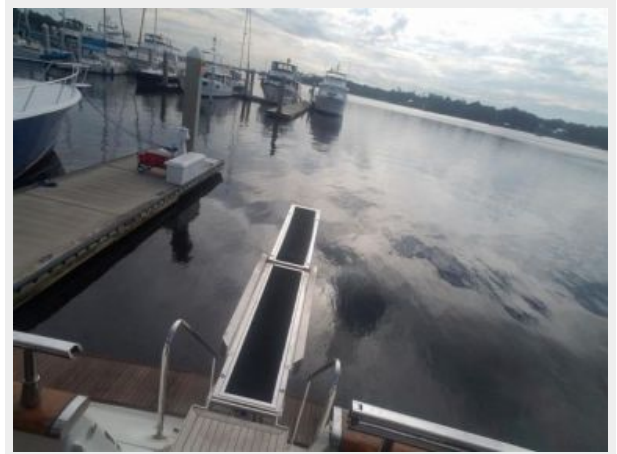
## Отказ от ответственности

---

Компания предоставляет описание судна или яхты добросовестно, но не может гарантировать точность этой информации, а также не ручается за техническое состояние. Покупатель должен проинструктировать своих агентов или оценщиков исследовать представленную информацию более подробно, по собственному желанию. Продажа судна или яхты, изменение цены или снятие с продажи будет происходить без предварительного уведомления.

# ФОТОГРАФИИ



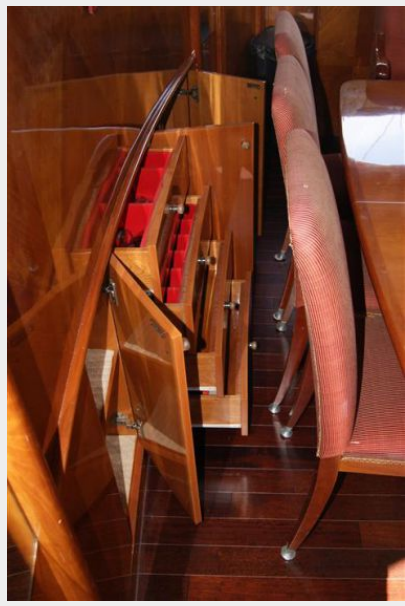


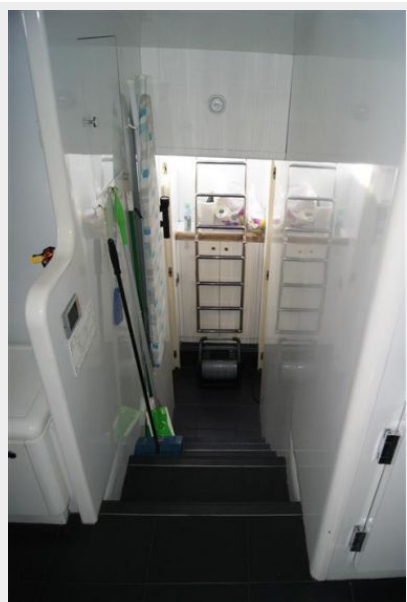




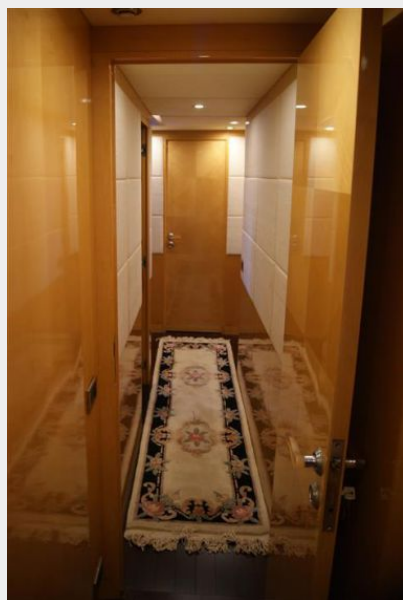




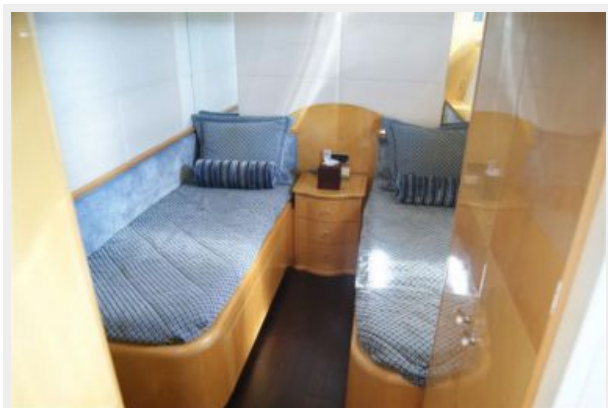




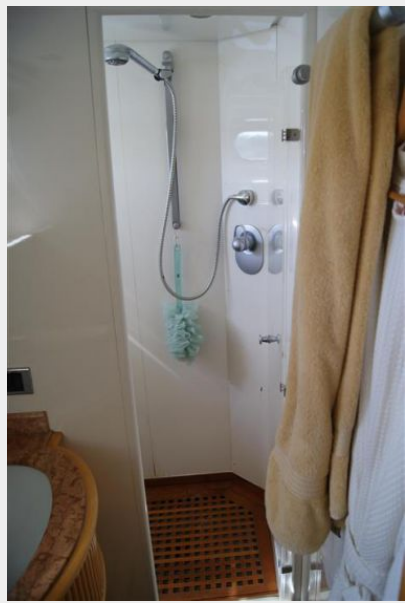




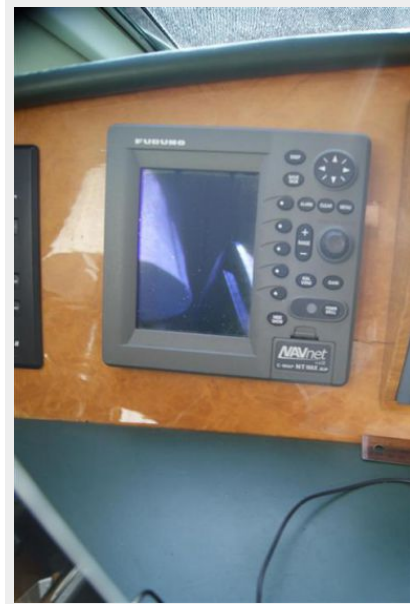


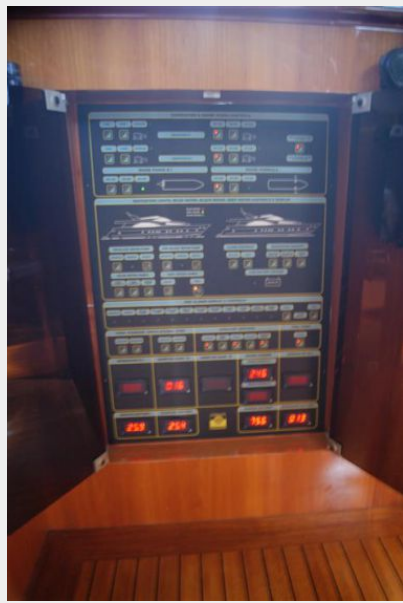




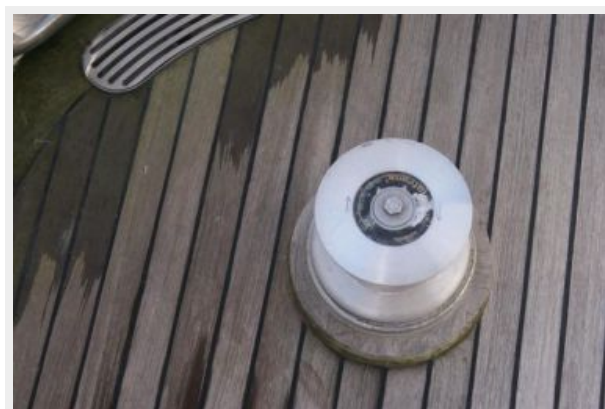












# КОНТАКТЫ

---

Андрей Шестаков (Andrey Shestakov) – ведущий яхтенный брокер отдела продаж яхт и судов компании Shestakov Yacht Sales Inc. Официальный представитель Shestakov Yacht Sales Inc. для русскоговорящих клиентов в центральном офисе компании в Майами/Форт Лодердейл/Флорида/США.

## Контактная информация

---

Email: [andrey@shestakovyachtsales.com](mailto:andrey@shestakovyachtsales.com)

Web: [shestakovyachtsales.com](http://shestakovyachtsales.com)

## Телефоны

---

Краснодарский край: **+7(918)465-66-44**

США, Майами, Флорида: **+1(954)274-4435**

## Время работы

---

Понедельник – Суббота: **9:00 - 21:00**  
EDT

Воскресенье: **Закрето**

## Адрес

---



Harbour Towne Marina, 850 NE 3rd St,  
STE 213, Dania, FL 33004