

## HINANO — NAUTOR'S SWAN



**Судостроитель:** NAUTOR'S SWAN

**Год постройки:** 1998

**Модель:** Cruising/Racing Sailboat

**Цена:** ЦЕНА ЯХТЫ ПО ЗАПРОСУ

**Местонахождение:** Italy

**Длина общая:** 49' 7" (15.09m)

**Ширина:** 14' 3" (4.32m)

**Мин. осадка:** 8' 1" (2.46m)

Купить Hinano — NAUTOR'S SWAN а также выбрать подходящую вам яхту из нашего каталога яхт вам поможет опытный яхтенный брокер Андрей Шестаков. На сегодняшний день компания Shestakov Yacht Sales Inc. имеет большое количество яхт в собственном списке продаж, а также тесно сотрудничает со всеми крупными яхтенными производителями по всему миру.

Для того чтобы купить яхту Hinano — NAUTOR'S SWAN а также проконсультироваться по любому вопросу связанному с покупкой, продажей, чартером яхт позвоните по телефону **+7(918)465-66-44**.

# ОГЛАВЛЕНИЕ

---

ОГЛАВЛЕНИЕ	2
ХАРАКТЕРИСТИКИ	3
Обзор	3
Основная информация	3
Размеры	3
Скорость, вместимость и масса	3
Размещение	3
Корпус и палуба	4
Информация о двигателе	4
ПОДРОБНОЕ ОПИСАНИЕ	5
Detailed Information	5
Исключения	11
Отказ от ответственности	12
ФОТОГРАФИИ	13
КОНТАКТЫ	17
Контактная информация	17
Телефоны	17
Время работы	17
Адрес	17

# ХАРАКТЕРИСТИКИ

## Обзор

Swan 48-121 is a beautiful 3 cabins with new Engine and new Mast 2013.

Always well maintained. Visible south of Rome.

## Основная информация

**Тип судна:** Cruising/Racing Sailboat      **Модельный год:** 1998

**Год постройки:** 1998      **Год обновления:** 2013

**Вид обновления:** New engine and new mast      **Страна:** Italy

## Размеры

**Длина общая:** 49' 7" (15.09m)      **Длина по ватерлинии:** 41' 0" (12.50m)

**Ширина:** 14' 3" (4.32m)      **Мин. осадка:** 8' 1" (2.46m)

## Скорость, вместимость и масса

**Водоизмещение:** 36266.042099 Pounds      **Вместимость воды:** 113.59398236 Gallons

**Объем топливного бака:** 79.2516156 Gallons

## Размещение

**Всего кают:** 3

---

## Корпус и палуба

---

**Материал корпуса:** GRP

**Цвет корпуса:** White

**Дизайнер корпуса:** Germán Frers

---

## Информация о двигателе

---

**Двигатели:** 1

**Производитель:** Volvo Penta

**Модель:** D2-75 (new 2013)

---

# ПОДРОБНОЕ ОПИСАНИЕ

---

## Detailed Information

---

### COMMENTS

Swan 48-121 is a beautiful 3 cabins with new Engine and new Mast 2013.

Always well maintained. Visible south of Rome.

### HULL & APPENDAGES

#### Construction

The hull is of single skin construction using glass/aramid hybrid fibre reinforced vinylester laminate

A high proportion of the fibres are unidirectional, giving a stiff laminate with excellent strength and fatigue properties.

Structural bulkheads are of honeycomb and laminated to hull and deck. Stiffener flanges are unidirectional lay-ups over foam cores.

Engine beds are of GRP with steel inserts.

Topside colour is white, boot top and cove stripe are dark blue gel coat. Bathing platform swim ladder to be a combined bathing/side boarding

Shore power intakes through a small hatch in port side of the transom for the cables with the connection in the lazarette.

Antimony cast lead ballast keel

The mast is stepped through deck onto a mast step with movable shoe for mast rake adjustment

### Steering Systems

The rudder is in GRP made in core foam

Wheel steering, destroyer type, covered in elkhide

### DECK

Teak laid deck is made in GRP sandwich construction , 9 mm teak glue with vacuum bag system

Teak toerail

Electric windlass | new 2012

Stainless lifelines with gates amidships on both sides Pulpit of the open type and equipped with a teak seat

The pushpit incorporates a gate for the bathing platform - socket for the flagpole - Auxiliary engine support Deck fittings for spinnaker pole

Aluminium mast collar bolted through deck for secure support of mast Stemhead fitting of stainless steel with two chain rollers

Deck shower, hot and cold water

## Deck Equipment

Windlass | new 2012 N 1 anchor CQR 75 lb

N 1 anchor Danforth 20Kg

Stainless steel protection for anchor CQR Chain m 100 (new 2015) | diameter 10 mm

## Winches

Winches all Lewmar (every year ordinary maintenance)

Ocean Series Wavespring(A = Aluminium ST = Self-tailing E = Electric

4x Lewmar 64 AST

1x Lewmar40 AST

1x Lewmar 16 AST

1x Lewmar 48 AST

## INTERIOR

### General

Teak with hand rubbed satin finish is used for all visible woodwork Foam cored floorboards with laid teak veneer

Roller blinds/mosquito screens for hinged deck hatches from 0.5 m width upwards Drawers are secured with latches

Wooden companionway ladders with non-slip steps

### **Master Cabin (Aft)**

Double central berth, drawers under both berths

GRP cockpit linings, finished in a light colour with textured surface Vanity Desk

Shelf with lockers over each side, full-length hanging locker Chubb safe in hanging locker

### **Heads**

Cameo White Corian washbasin and surfaces

Lockers, Mirror, telephone type shower and bulkhead mounted shower head. Shower curtains

White GRP lining to half-height Tiles on floor

Large bowl Par WC 2 doors

### **Galley**

Stainless steel, three-burner ALPES gas stove with oven and grill, with fiddles and gimbaled Extractor hood over stove

Micro-wave oven Siemens HF 13563 230V 50Hz inox Drawers for tools

GRP Garbage bin

Iceberg fridge and freezer run on engine and 230V

Work area each side of stove in Corian Cameo White. Double stainless steel sinks Sea water with foot pump

Drip dry locker

### **Main Cabin**

Teak table with door below for bottles

“L” shaped settee portside with 2 chairs on centerline Settee to starboard

Lockers and bookshelf to starboard above settee Teak cover on mast in saloon

Stereo/CD player

## **Nav Station**

Chart stowage under tabletop Single navigator's seat Drawers under the table

## **Guest Cabins**

Upper and lower berths and hanging lockers forward

Starboard cabin with pull out lower berth and wider than standard upper berth Lockers outboard of upper berth

2 Drawers under lower berths

Small shelves by the head of each berth

## **ENGINE & SYSTEMS**

Volvo Penta Model D2-75 new 2013 Drip tray integral with engine basement

Engine area sound insulated with fire-proof material according to Solas B-15

Fuel capacity 300 litres in 2 stainless steel tanks with level gauges on engine control panel Max Prop 4 blade propeller 2015

## **Plumbing Systems**

Hot and cold pressurized water for galley and heads.

Water capacity 430 litres in 2 stainless steel tanks with level gauges Water heater 24 litres capacity

Filler tap on deck. Vents for water tanks on galley sinks Sea water foot pump for galley sinks

Fridge and freezer Iceberg run on engine and 220 V

## **Drainage System**



Two manual bilge pumps, one below, one in cockpit, emptying through sea cocks above waterline Electric bilge pump, manual and automatic control

Visible and acoustic alarm for water in bilge

## ELECTRICAL SYSTEM

### DC System

12 V DC for engine starting 24 V DC for service

One battery set 24 V 400 Ah for general service 6pcs new 2018 Engine starter battery 90 Ah, 12 V, under settee in main cabin (2017) Spreader deck lights

Tricolour lights on masthead

Red dome night-lights in galley and over chart table Ceiling lights Cantalupi

### AC System

230 V AC, three wire electrical system Shore power supply 230 V

### Chargers/Inverters

Battery charger 50 A

Alternator on the engine 100 Ah 28V / Double Inverter MasterVolt

## ELECTRONIC SYSTEMS

### Navigation Instruments

Navigational instruments Raymarine ST Digital FFD repeaters TableChart

2 Analogic repeaters 360° 1 Digital Repetears FFD

Compass Super Halcyon 3 and moving card 215-HL.142 Barometric pressure sensor | Igrometric | Watch | Bronze Radar Raymarine (Pole/Stern)

Autopilot Autohelm ST 7000 + Remote Control VHF

Raymarine HybridTouch display at Chart table RayMarine HybridTouch 7" display at helm GPS

Antenna Cockpit

AIS RayMarine ship monitoring system with interface C-MAP + NAVIONICS Charts

## **Communications Systems**

VHF RayMarine at chart table and handset in cockpit,

## **Entertainment Systems**

Stereo/CD - MP3

## **MAST & RIGGING**

Aluminium triple spreader masthead rig supported by babystay, runners, checkstays new 2013 babystay and checkstays and innerforestay PBO | new 2013

Lateral Rigging Forestay Backstay rigging - solid Navtec rod | new 2013 Harken Headsail furler including blocks and clutch

Harken track for Fully Batten mainsail Hardware | new 2013 Hardware cars | new 2013

Lazy jacks

One spinnaker pole | Aluminium One jockey pole | Aluminium

Navtec hydraulic system with control unit in cockpit for Backstay, Staysail, boom Vang (Revised 2013)

## **EQUIPMENT**

### **General Equipment**

CoverBoom (Pipe)

Sprayhood over entrance hatch Sprayhood over forward end of aft cockpit Bimini

Cockpit table

Upholstery for cockpit (cushions / new 2017) Gangway (White | Carbon | 2010 )

Tender Caribe | Grey 350 OutBoard SELVA 4T | 4Hp

## Safety Equipment

Liferat Eurovinil | 12pax – Revised 2018 Fires Set

LifeVest | 12Pax

Automatic fire extinguisher in engine area

## SAILS

Mainsail Full Batten | 2 Reef | Dacron | North Sails | > 2004

Mainsail Full Batten | Dacron | Quantum | < 2004

Furling Genoa 150% | Dacron | Murphy & Nye | 2017

Furling Genoa 140% | Dacron | Quantum | < 2004

Jib #3 | Dacron | North Sails | 2006 excellent condition

2 Spinnaker | North Sails

1 Gennaker | no snuffer

**Price may be changed without notice**

**Boat is offered subject to still being available**

**The particulars are believed to be correct but not guaranteed**

---

## Исключения

---

При продаже яхты исключаются личные вещи владельца.

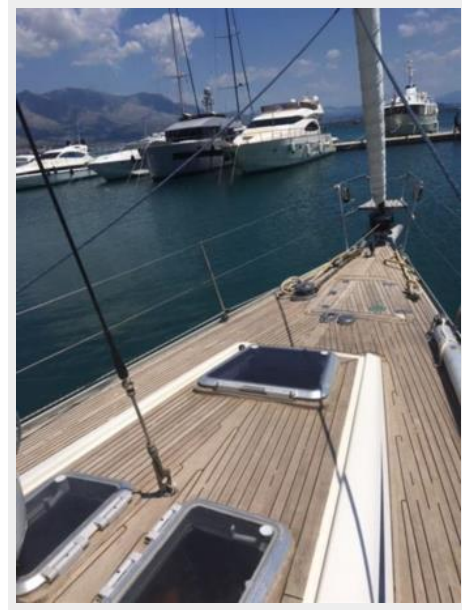
## Отказ от ответственности

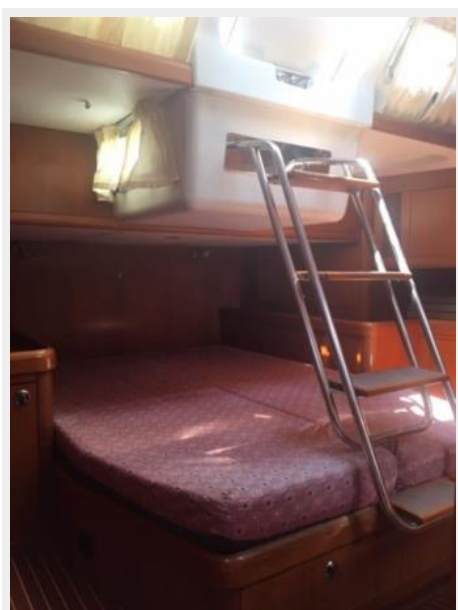
---

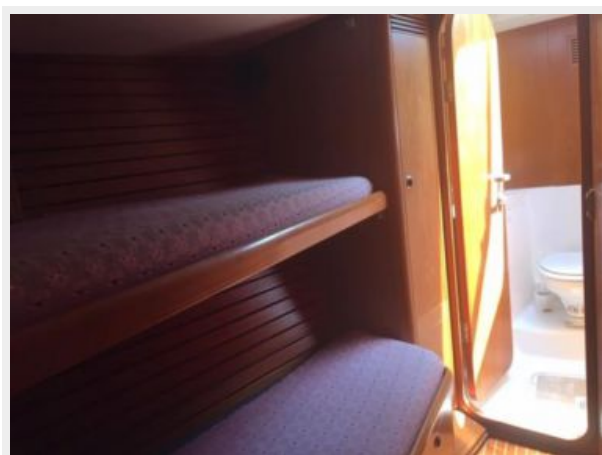
Компания предоставляет описание судна или яхты добросовестно, но не может гарантировать точность этой информации, а также не ручается за техническое состояние. Покупатель должен проинструктировать своих агентов или оценщиков исследовать представленную информацию более подробно, по собственному желанию. Продажа судна или яхты, изменение цены или снятие с продажи будет происходить без предварительного уведомления.

# ФОТОГРАФИИ











# КОНТАКТЫ

---

Андрей Шестаков (Andrey Shestakov) – ведущий яхтенный брокер отдела продаж яхт и судов компании Shestakov Yacht Sales Inc. Официальный представитель Shestakov Yacht Sales Inc. для русскоговорящих клиентов в центральном офисе компании в Майами/Форт Лодердейл/Флорида/США.

## Контактная информация

---

Email: [andrey@shestakovyachtsales.com](mailto:andrey@shestakovyachtsales.com)

Web: [shestakovyachtsales.com](http://shestakovyachtsales.com)

## Телефоны

---

Краснодарский край: **+7(918)465-66-44**

США, Майами, Флорида: **+1(954)274-4435**

## Время работы

---

Понедельник – Суббота: **9:00 - 21:00**  
EDT

Воскресенье: **Закрито**

## Адрес

---



Harbour Towne Marina, 850 NE 3rd St,  
STE 213, Dania, FL 33004