

## MOODY BLUE — OFFSHORE YACHTS



**Судостроитель:** OFFSHORE YACHTS

**Год постройки:** 2005

**Модель:** Моторная яхта

**Цена:** **ЦЕНА ЯХТЫ ПО ЗАПРОСУ**

**Местонахождение:** United States

**Длина общая:** 66' 0" (20.12m)

**Ширина:** 19' 3" (5.87m)

**Макс. осадка:** 5' 10" (1.78m)

**Крейс. скорость:** 13 Kts. (15 MPH)

**Макс. скорость:** 16 Kts. (18 MPH)

Купить **Moody Blue — OFFSHORE YACHTS** а также выбрать подходящую вам яхту из нашего каталога яхт вам поможет опытный яхтенный брокер Андрей Шестаков. На сегодняшний день компания **Shestakov Yacht Sales Inc.** имеет большое количество яхт в собственном списке продаж, а также тесно сотрудничает со всеми крупными яхтенными производителями по всему миру.

Для того чтобы купить яхту **Moody Blue — OFFSHORE YACHTS** а также проконсультироваться по любому вопросу связанному с покупкой, продажей, чартером яхт позвоните по телефону **+7(918)465-66-44**.

# ОГЛАВЛЕНИЕ

ОГЛАВЛЕНИЕ	2
ХАРАКТЕРИСТИКИ	4
Обзор	4
Основная информация	4
Размеры	4
Скорость, вместимость и масса	4
Размещение	4
Корпус и палуба	5
Информация о двигателе	5
ПОДРОБНОЕ ОПИСАНИЕ	6
Main Salon	6
Galley	6
Pilothouse	6
Pilothouse Electronics	6
Flybridge Electronics	7
California Deck	7
Master Stateroom	7
Master Head	7
VIP Stateroom	7
VIP Head	8
Day Head	8
Guest Stateroom	8
Laundry	8
Lazarette	8
Crew Quarters	9
Engine and Mechanical Equipment	9
Extra Options	9
Hull Design	9

Hull Construction	9
Super Structure and Deck	9
External Parts	10
Construction	10
Propulsion System	10
Equipment	10
Engine Room and Bilge	11
Electrical Equipment	11
Main Deck	12
Aft Deck/Cockpit	12
Flybridge/Sport Deck	12
Miscellaneous Standards	13
Recent Work	13
Upgrades and Repairs (Over \$100,000)	13
Updates 2017/2018	13
Исключения	14
Отказ от ответственности	14
<b>ФОТОГРАФИИ</b>	<b>15</b>
<b>КОНТАКТЫ</b>	<b>21</b>
Контактная информация	21
Телефоны	21
Время работы	21
Адрес	21

# ХАРАКТЕРИСТИКИ

## Обзор

This magnificent family cruiser is extremely well looked after and hosts numerous updates and refreshment of systems. Her THREE STATEROOM, plus private crew space, offer exceptional accommodations for long term cruising by a family with captain or those couples simply looking to break away on their own. No stress! Easy systems management and handling featuring stand up engine room, separate pump room and work space, hydraulic stabilizer's, hydraulic bow and stern thrusters and, plush, well-appointed pilothouse. Other attributes included her custom hard top with EZ2CY enclosure, full length boat deck, easy water access, smart styling and overall tidiness. A very smart and rare option in today's market! Turn the keys and go on this one!

## Основная информация

**Тип судна:** Моторная яхта

**Модельный год:** 2005

**Год постройки:** 2005

**Страна:** United States

**Верх:** Hardtop

## Размеры

**Длина общая:** 66' 0" (20.12m)

**Ширина:** 19' 3" (5.87m)

**Макс. осадка:** 5' 10" (1.78m)

## Скорость, вместимость и масса

**Крейс. скорость:** 13 Kts. (15 MPH)

**Макс. скорость:** 16 Kts. (18 MPH)

**Вместимость воды:** 600 Gallons

**Объем топливного бака:** 1800 Gallons

## Размещение

**Всего кают:** 3

## Корпус и палуба

---

**Материал корпуса:** Fiberglass

## Информация о двигателе

---

**Двигатели:** 2

**Производитель:** Caterpillar

**Модель:** C18

**Тип двигателя:** Inboard

**Тип топлива:** Diesel

---

# ПОДРОБНОЕ ОПИСАНИЕ

---

## Main Salon

---

Large Lshaped settee to port, two custom swivel barrel chairs to starboard with matching ottoman and storage. Spinneybeck leather counter stools at the galley and granite desk to starboard with office computer, box file drawer, and storage. Custom higloss oval table with inlay in the salon. Custom end table with storage. Custom fluted columns with crown molding surrounding the salon and galley. Hunter Douglas silhouettes cover the spacious windows. To starboard is the popup flat screen TV. There is high end fabric carpeting throughout. Low large windows for "sit down" visibility Lambrequins at windows Halogen "Cantalupi" lighting with dimmer controls and four 110V wall sconces Soft vinyl headliner 46" LED TV and "Polk Audio" surround sound speaker system

## Galley

---

Miele G832SC dishwasher Miele KM421 cook top Miele H38BP oven Custom granite Water purification filter system Cabinets with roll out storage shelves Granite counter tops with overhead hanging storage cabinets Halogen overhead lighting with dimmer control, under cabinet lighting Fold out soap tray at sink Drawers and cabinets fitted with push pull latches and lined with Formica Large pantry with slide out shelves and counter cabinets with slide out shelves Double stainless-steel sink with Grohe faucet Grohe soap dispenser InSinkEerator stainless steel classic 1 hp garbage disposal with top switch GE microwave/convection oven Sub Zero 700 TC refrigerator with 2 drawer freezer below Solid wood

## Pilothouse

---

Large open pass through from galley to pilothouse Helm station with complete engine instrumentation, function alarms, and rudder indicator Chart table/locker with navigation lights and magnetic compass Halogen Cantalupi lighting with dimmer controls Tank Guard digital monitoring system for fuel, water, and waste tanks Rocker switch panel for functions Ship's function panel with indicator lights Three stainless Exalto articulating windshield wipers with washer system Two ventilation overhead hatches with Ocean Air blinds sliding screens;/shades Two Stidd helm chairs with ultra-leather covering Raised "L" seat with dining table UV protectant varnish on all console veneers Sub Zero under counter refrigerator

## Pilothouse Electronics

---

Three individual displays consisting of: Garmin 15" color display Two Furuno VX2 10" color displays Two Furuno RD 30 displays GPS, chart plotter, color depth sounder (2 with individual thru hulls} Black box radar, Airmar weather system, Garmin radar Simrad AP 28 autopilot Furuno

Nav Pilot with second redundant autopilot Color closed circuit TV system with switcher (4cameras plus Flir TV) Two ICOM M602 VHF radios Two CAT electronic engine monitor panels Electronic transmission controls Wesmar stabilizer control panel Tank monitoring system Remote water maker panel ACR RL 100 search light Xantrex 4000 inverter/charger Flir thermal night vision camera Garmin AISB (send and receive)

---

## Flybridge Electronics

---

Two Garmins, 15" Two Furuno RD 30 Simrad autopilot ICOM remote mikes for VHF radios ACR search light remote Buell triple air horns Huge boat deck with Novurania dinghy model 430 DL with 70 hp Yamaha 4stroke engine Remote control for engines and thrusters on 50 (+I) cable

---

## California Deck

---

Newly remodeled settee and teak chairs Custom higloss teak table with matching inlay Teak decks Two wing doors for added weather protection Third aft station with thruster control

---

## Master Stateroom

---

King size walkaround bed with drawers and locker under Cedar line hanging lockers Polk audio speaker system Built-in 32" LED TV with bureau drawers below, separate receiver Insulated/cored aft and forward bulkheads Halogen Cantalupi overhead lighting with dimmer controls Two Manship stainless steel opening port lights powder coated to match gel coat Safety escape hatch at overhead High quality carpet with sound pad Custom frosted glass Shoji panels with teak trim and rope lighting Marble make up station Fluted columns added to night stands Custom double master head with doors with frosted glass Shoji panels Custom glass panel in master stairway lobby Furuno RD 30 display Washer/dryer outside master stateroom

---

## Master Head

---

Marble counter top and shower seat Newport Brass faucets, towel bars, and towel ring Tecma silent flush toilet Shower with frameless glass door and integral towel bar with teak grate Halogen Cantalupi overhead lighting with dimmer control Ultra-quiet ventilation system Hard wood sole Opening stainless steel port lights powder coated to match gel coat Head sole crema Marfil Custom etched glass shower door

---

## VIP Stateroom

---

Queen size island bed with hinged top with drawers below Cedar lined hanging lockers Polk audio speaker system Built-in 19" LED TV, separate receiver Halogen Cantalupi overhead lighting with dimmer control and berth lighting Safety escape/ventilating hatch to forward deck

with Ocean Air blinds Two Manship stainless steel opening port lights powder coated to match gel coat Carpeted sole Ensuite head and shower with custom marble top Abundant storage, lockers, drawers and cabinets

---

## VIP Head

---

Marble counter top with 6" back and side splash with ceramic sink Shower with frameless, etched glass door and integral towel bar with teak grate Marble seat in shower Newport Brass faucets, towel bars, and towel ring Opening stainless steel port light powder coated to match gel coat Tecma silent flush toilet Halogen Cantalupi lighting with dimmer controls Hard wood sole Ultra-quiet ventilation system

---

## Day Head

---

Marble counter top with 6" back and side splash with ceramic sink Shower with frameless, etched glass door and integral towel bar with teak grate Marble seat in shower Newport Brass faucets, towel bars, and towel ring Opening stainless steel port light powder coated to match gel coat Tecma silent flush toilet Halogen Cantalupi lighting with dimmer controls Hard wood sole Ultra-quiet ventilation system

---

## Guest Stateroom

---

Over/under bunks with storage below Cedar lined hanging locker Polk audio speaker system Halogen Cantalupi overhead lighting with dimmer control and berth lighting One Manship stainless steel opening port light powder coated to match gel coat Carpeted sole Builtin 19" LED TV

---

## Laundry

---

Full size individual Asko units with storage and shelves behind custom doors

---

## Lazarette

---

Work bench with 6'2" headroom Large storage lockers, drawers, and cabinets Stainless steel work surface Large tool kit (tools not included) Stairs to California deck and door to swim platform Large Capacity icemaker Watertight access door to swim step/cockpit area Ladder and watertight hatch to California deck Cabinets and work surfaces covered in offwhite Formica or stainless steel with teak trim Halogen overhead "Cantalupi" work lighting Two opening port lights Vinyl sole



---

## Crew Quarters

---

Private stern entrance Two single berths Hanging locker Cabinets and wall surfaces covered in offwhite Formica with teak trim Halogen Cantalupi overhead lighting with dimmer control Workshop and galley area Marbelite counter top and sink with Grohe faucet Enclosed head with Tecma toilet and FRP shower Ultra-quiet ventilation system Two Manship stainless steel opening port lights powder coated to match gel coat

---

## Engine and Mechanical Equipment

---

Two Northern Lights 20 KW generators 4,100 hours, 4,100 hours Reverse high-speed fuel transfer pump 65 gph FCI Water maker 400' 3/8" high test chain Underwater lights Charles ISObooster with monitoring panel

---

## Extra Options

---

Teak cap rail Teak decking at California deck and aft stairs Wing doors at California deck Teak aft deck table Boarding ladder storage locker MarQuipt Tide Ride ladder with storage rack Tackle drawers inside port aft deck cabinet Teak grates in bottom of lockers Remote control for clutches and thrusters Hose winders for forward and aft

---

## Hull Design

---

Planing bottom with deep vee bow entry, generous flair at bow sections, double chine, prop pockets, integral swim platform, keel extension for propeller protection, and FRP exhaust barriers.

---

## Hull Construction

---

Hand laminated FRP utilizing bidirectional and unidirectional knytex CDM2415, DBM2145, CDM1810, and CDM1708 (or equivalent), vacuum bagged Core Cell sandwich construction above the water line, solid laminate below the water line with high quality iso and vinyl ester resins. Fulllength hull girders of high-density foam cores with bi & unidirectional knytex. Exterior hull finish in high gloss "Cook" gel coat (953 WA#540), Reichold Hydrex vinyl ester resin laminates Cored structural bulkheads padded at hull, bonded as per schedule Putty coated bilges for smooth finish All bonding of hull to deck, roofs to cabins done with FRP, exterior finished with gel coat. 30mil epoxy barrier coating and bottom paint with prorated 5year warranty

---

## Super Structure and Deck

---

Hand laminated FRP utilizing bidirectional and unidirectional knytex with Core Cell sandwich,

high quality ISO resin, vacuum bagging, and deck mechanically and FRP bonded to hull. Suitable high compression cores as required for hardware mounting. Exterior finished with high gloss "cook" gel coat, #953WA540 for superstructure and #953 NA#526 for nonskid or teak deck, gel coated joint at roof to cabin sides. Main deck soles and engine room bulkheads padded and cored with appropriate sandwich materials. Teak at California deck (including steps to swim deck) Teak cap rails (bow to stem)

---

## External Parts

---

Hand laminated FRP construction, utilizing core cell sandwich vacuum bagging where appropriate of exterior doors, recessed window and door frames (in the mold) and exterior window trim, radar arch.

---

## Construction

---

Vessel scantlings, construction, systems and installations shall meet or exceed all applicable ABS standards. All systems to have operation manuals and system schematics.

---

## Propulsion System

---

Caterpillar twin 1000 hp C18 diesels with vibration damping mounts, 24V/75 am alternators. IRM350A 2.64:1 gears with Centa dampening and live PTO on back engines Stainless steel #316 (with 316L rod) exhaust risers with zinc plugs connecting to FRP underwater system with bypass pipes to "Aqua Quiet" mufflers. Two 3" Aquamet #22 High Strength propeller shafts (or equivalent) Bronze V struts with Cutlass bearings Bronze intermediate struts with Cutlass bearings (Morse or equivalent) Fourblade expanded ratio computer designed propellers Wesmar roll fin hydraulic stabilizers Hydraulic 40 HP BOW and STERN 15 hp thruster with hydraulic raw water-cooling pump Dripless shaft glands (Tides) with dual cooling lines Twin Disc electronic engine controls at pilothouse, flybridge, and aft deck Hynautic power steering system Engine room start/stop panels with engine gauges Visual & audio alarms for engine systems at pilothouse and flybridge

---

## Equipment

---

AB inflatable, 2011, with Yamaha 70 hp, 150 hours Maxwell 24V, 3500 lb. anchor windlass with three station control, separate chain and rope lockers. Motor, 2 years old Stainless Delta 85 lb. bow anchor with 400 ft. 3/8" HT chain and chain stopper. 2nd Fortress aluminum anchor with chain and rope Hynautic 652" trim tabs with controls at pilothouse and flybridge. Steelhead 1800 lb. hydraulic davit with boom, cable, and rotation functions. Marine Air 90,000 BTU air conditioning system Fire Boy automatic fire extinguishing system with engine shutdown system. Reverse 24V/AC oil change system Dual Buell low profile air horns with 120V compressor,

compressor outlets at lazarette and engine room. Exalto stainless articulating windshield wiper with washer system (4) Tecma silent flush heads Headhunter holding tank discharge pump with Sealand stand by macerator pump Deck discharge for holding tank 110V & 24V Six 24V bilge pumps with Ultra system bilge switches Ultra-system high water bilge alarm with warning lights at pilothouse Gate valve at each watertight structural bulkhead Headhunter March 5 120V fresh water pressure pump with filter and accumulator tank, New Headhunter 24V stand by water pressure pump, new 12/15 35 gal. Allcraft 220V stainless steel hot water heater Two shower sump tanks Port and starboard (or fore and aft) dockside water pressure connection Central drain system minimizing thruhull fittings Two hose winders with remote controls. Engine batteries, 09/12; House batteries 07/15 A Charles ISO booster was added to the electric system in September of 2012

## Engine Room and Bilge

Welded stainless steel engine beds (electro polished) Three aluminum (marine grade) fuel tanks with sight gauges (1,800 gallons) Fuel tanks insulated to minimize condensation and noise transfer Fuel manifold system for supply and return management with 2" crossover for fuel fills Sight gauges (marine grade with protective guard) at each fuel tank. Marine grade bronze sea cocks for through hull skin fittings Groco sea strainers at all raw water intakes Main seawater intakes plumbed for emergency bilge pump use Full flow stainless ball valves for all piping systems Dual Racor marine filter system with vacuum gauge for main engines Racor #1000 marine filter system with gauge Tank level indicator system for fuel, water, and waste tanks High output "Whale" 40 manual bilge pump "DeltaT" engine air intake system (minimizes water injection) color matched to exterior. Four "DeltaT" 11" 120V/AC engine room blowers "Tides" dripless glands at rudder logs Hydrodynamic stainless-steel rudders per design Engine room 24V/DC lights X 4 pes and 120V/AC fluorescent lamps X 4 pes. Engine room video camera system (2) cameras Stainless steel safety rails along inboard engine stringers Reverse highvolume fuel transfer pump, 24V Low-profile stainless-steel dome lights at pump room and thruster/chain area Fresh water wash down faucet in engine room Integrated overhead storage lockers above engines White aluminum perforated covering an overhead, side, forward, and aft engine room bulkheads

## Electrical Equipment

(2) Northern Lights 20 kW diesel generators, 24V start with whisper sound shield with gas/water exhaust separators and E.A.R. anti vibration mounts Four Sea Gel 8D gel cell main engine start batteries (24V), 09/12 Two Sea Gel 4D gel cell generator start batteries (24V), 09/12 Eight Sea Gel 8D gel cell batteries for ship's 24V system, new 07/15 Battery cross over capability for main engine and generator batteries Xantrex SW40/24 k kW inverter/120-amp charger with high temp. shut down Newmar PT2440CE, 24V ship service back up charger with high temp. shut down, new 10/15 Newmar PT2420CE, 24V engine battery charger with high temp. shut down. Additional 60-amp 24V alternator on each engine for ship service systems Digital DC charge rate, DC ammeters and DC voltmeters 24V & 12V distribution/circuit breaker panels with amp

and volt meters with backing light Four Mastervolt 20-amp converters, 24V to 12V 120V & 240V distribution/circuit panels with amp and voltmeters with backing light Marinco shore power 125/250V50A, phone and TV cable inlets port and starboard side (or fore & aft) Glendinning CM7 cable master, 240V, 50 amp with 75' cable Halogen overhead Cantalupi lighting with dimmer controls throughout the boat Wall sconces or reading lights in staterooms and heads as appropriate GFI breaker protection as appropriate at deck, galley, heads, engine room, and lazarette Breaker protection at each AC source Electrolysis bonding and grounding system with two 6" X 12" zinc plates and shaft scratchers High quality shielded RG6 CO AX for TV's Tinned high temperature wiring, UL approved ACR search light with remote control 46" screen TV at salon and Polk Audio surround speaker system at salon 32" TV at master stateroom, 19" TV at VIP and mid guest staterooms Polk Audio speaker systems at pilothouse, master, VIP, and mid guest cabins Spreader lights on radar arch

## Main Deck

---

Twotone nonskid on all decks, and pilothouse room white nonskid Exterior stainless 316 grade (including screws and bolts/nuts), welds ground and polished 1 1/4" stainless steel hand rails and bow 3 16 stainless steel threestep side boarding ladder with integral bulwark FRP storage locker to starboard Port and starboard bulwark doors with stainless steel threestep boarding ladder with FRP treads. Manship overhead hatches with Ocean Air blinds sliding screens/shades Manship stainless steel port lights 316 stainless steel hawse holes with cleats, 316 stainless steel bow chocks, 316 stainless steel cleats. Waterproof Cantalupi deck lights and safety lights Four 2" stainless steel removable handrails at sport deck and popup dinghy cleats Aluminum reinforced exterior doors, exterior FRP covered and gel coated, interiors covered with matching interior wood, and stainless-steel door frames Bow staff and stainless-steel socket Port and starboard storage lockers at bow Rope locker for 2nd anchor type Provision for 2nd anchor with dual 316 stainless channels and rollers Fresh and salt water wash downs at bow

## Aft Deck/Cockpit

---

Aft deck engine & thruster controls, rudder indicator and engine startstop switches Aft deck storage cabinet with teak aeration grates Watertight storage under swim step with teak aeration grates Covered sink Engine room and lazarette access from California deck Two aft deck flood lights Handheld shower at sport deck Fresh water wash down at sport deck Rear fashion plates Four removable stainless 2" diameter Uhand rails at sport deck Stainless steel popup cleats at sport deck Stainless steel builtin swim ladder at sport deck Poly Planar waterproof speakers in California deck overhead with volume control Two cameras at California deck Removable Phifertex Plus shade behind California deck settees

## Flybridge/Sport Deck

---

Lexan venturi windshield with stainless steel frame (2) Stidd helm chair "L" seats, storage and

teak aeration slats, two FRP table with stainless steel bases Cabinet with sink and stainless steel Isotherm 85 stainless refrigerator Teak ventilation slats inside exterior cabinets and seats FRP Radar arch I FRP hardtop 1,800 lb. hydraulic cable, boom, and rotation of davit "steel head" Boat deck drained to waterline with integral drains and scuppers 1 1/4" stainless steel handrails at boat deck with welded stainless steel life lines Manship stainless steel hatch and stainless steel ladder to California deck with stainless steel safety rail Stainless steel flag socket and teak flag staff Fresh water wash down outlet Poly Planar waterproof speakers in radar arch/hard top with volume control Custom BBQ Magma grill Custom radar arch Custom 48" refrigerator/freezer

## Miscellaneous Standards

---

A500 foam in exterior cabinet doors Solid brass interior door hardware Positive push to release hatches on cabinet doors and drawers All equipment, wiring, and plumbing to have proper access All wiring to be continuous run from source to breakers and from breakers to equipment Direct overboard discharge of heads with Yvalve

## Recent Work

---

Wesmar stabilizers control unit upgraded to DSP 4801 (latest technology) Props tuned/shafts aligned 6' Stabilizer fins pulled, and bearings replaced as needed California deck table refinished 2000 hr Caterpillar Service by Smith and Wick

## Upgrades and Repairs (Over \$100,000)

---

Garmin 72mile radar with 6' array, 6 kW high definition New dinghy cover, 01/16 New Headhunter Mac 5 fresh water pump, 01/16 Sent Twin Disc controls heads and port and starboard engines boxes for service, 11/15 Replaced port starter main engine, 11/15 Replaced starboard starter main engine, 08/15 Replaced backup charger for house batteries, 10/15 New house batteries, 07/15 New solid windshield cover made of Sunbrella, 07/15 Installed new sconces in salon and master stateroom, 07/15 Upgrade bow thruster from 25 hp to 40 hp, 05/15 MarQuipt 6step boarding ladder with custom storage in crew area, 04/15 Watermaker serviced 05/15 Six coats of varnish on flybridge and cockpit table, cap rail behind aft seating, and table between seating on aft deck, 05/15 Replace hydraulic system cooling pump, 04/15 Service 110V and 24V macerator pump, 03/15 All audio/video is new, including KVH HD7

## Updates 2017/2018

---

08/17/17 All new motor mounts on generators 05/20/18 All new window caulking New davit hydraulic line New Newmar battery charger 05/31/18 (2) New engine DeAngelo exhaust risers (3) All new air conditioning condensers by Yacht Equipment 07/11/18 Oil and Filter change on all engines and generators 08/15/18 Renew and refit dinghy with all new tubes (Orca 828 military

gauge) by Inflatable Boat Pro 08/30/18 Replaced all new hydraulic oil New stern thruster motor Flybridge and Pilothouse small refrigerator (fan motors replaced) All new batteries 09/15/18 Fire extinguisher check and changed All new fire extinguishers as per new code All watermaker elements are new on the port side ??water pump??? New davit, hydraulic lines New house batteries New transducer for Garmin equipment (7) new underwater lights blue All new LED engine room lights New Zincs New bottom paint Repaired blisters in stern and repainted New lazarette door lock New port side AC pump

## Исключения

---

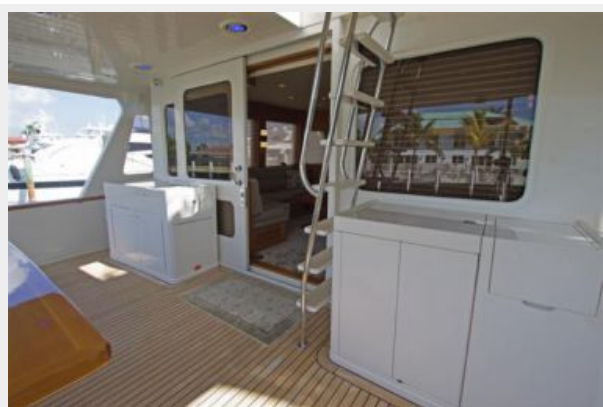
При продаже яхты исключаются личные вещи владельца.

## Отказ от ответственности

---

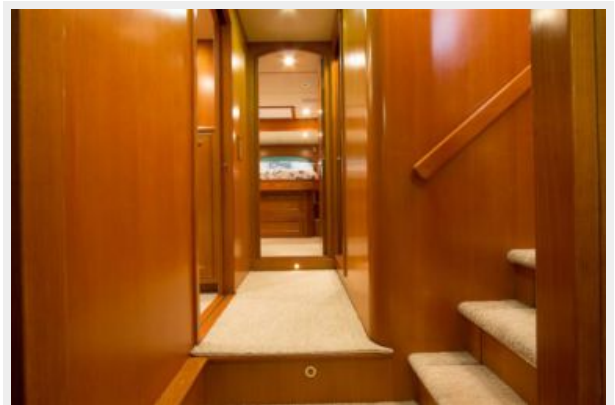
Компания предоставляет описание судна или яхты добросовестно, но не может гарантировать точность этой информации, а также не ручается за техническое состояние. Покупатель должен проинструктировать своих агентов или оценщиков исследовать представленную информацию более подробно, по собственному желанию. Продажа судна или яхты, изменение цены или снятие с продажи будет происходить без предварительного уведомления.

# ФОТОГРАФИИ



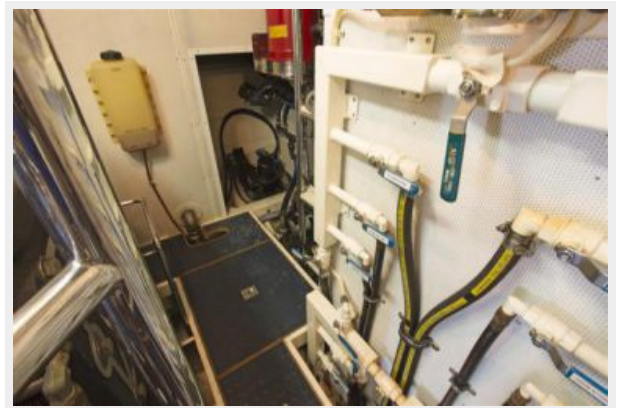












# КОНТАКТЫ

---

Андрей Шестаков (Andrey Shestakov) – ведущий яхтенный брокер отдела продаж яхт и судов компании Shestakov Yacht Sales Inc. Официальный представитель Shestakov Yacht Sales Inc. для русскоговорящих клиентов в центральном офисе компании в Майами/Форт Лодердейл/Флорида/США.

## Контактная информация

---

Email: [andrey@shestakovyachtsales.com](mailto:andrey@shestakovyachtsales.com)

Web: [shestakovyachtsales.com](http://shestakovyachtsales.com)

## Телефоны

---

Краснодарский край: **+7(918)465-66-44**

США, Майами, Флорида: **+1(954)274-4435**

## Время работы

---

Понедельник – Суббота: **9:00 - 21:00**  
EDT

Воскресенье: **Закрито**

## Адрес

---



Harbour Towne Marina, 850 NE 3rd St,  
STE 213, Dania, FL 33004