

CHARISMA — SILVERTON



Builder: SILVERTON

Year Built: 2008

Model: Sport Fisherman

Price: PRICE ON APPLICATION

Location: United States

LOA: 45' 0" (13.72m)

Beam: 15' 3" (4.65m)

Max Draft: 4' 5" (1.35m)

Our experienced yacht broker, Andrey Shestakov, will help you choose and buy a yacht that best suits your needs **Charisma — SILVERTON** from our catalogue. Presently, at Shestakov Yacht Sales Inc., we have a wide variety of yachts available on our sale's list. We also work in close contact with all the big yacht manufacturers from all over the world.

If you would like to buy a yacht **Charisma — SILVERTON** or would like help answering any questions concerning purchasing, selling or chartering a yacht, please call **+1(954)274-4435**

TABLE OF CONTENTS

TABLE OF CONTENTS	2
SPECIFICATIONS	5
Overview	5
Basic Information	6
Dimensions	7
Speed, Capacities and Weight	7
Accommodations	7
Hull and Deck Information	7
Engine Information	7
PHOTOS	8
Charisma - Feature starboard side (aft view)	8
Charisma - Bow facing aft	8
Charisma - Starboard side facing forward	8
Charisma - Port side (cruising underway)	8
Charisma - Entrance to salon and galley	8
Charisma - Salon and galley	8
Charisma - Galley table	9
Charisma - Salon couch and high/low table	9
Charisma - Media and tv center	9
Charisma - Sharp TV for the salon	9
Charisma - Galley	9
Charisma - Galley #2	9
Charisma - Galley #3	10
Charisma - Master stateroom bed	10
Charisma - Master stateroom left side	10
Charisma - Master stateroom right side	10
Charisma - Master stateroom full head	10
Charisma - Master stateroom full head #2	10

Charisma - Carpet covers inside salon, galley, and downstairs hallway	11
Charisma - Port side- Twin berth	11
Charisma - Twin berth with Sharp TV view	11
Charisma - Twin berth entrance	11
Charisma - Day head/guest bathroom	11
Charisma - VIP stateroom queen berth	11
Charisma - VIP stateroom with central vac access compartment	12
Charisma - VIP stateroom with Sharp TV	12
Charisma - VIP stateroom entrance/access to washer and dryer units	12
Charisma - Washer and Dryer units	12
Charisma - Solé DVD and surround system in each stateroom	12
Charisma - Stairs to the flybridge	12
Charisma - Flybridge center and port side seating bench	13
Charisma - Flybridge starboard side seating	13
Charisma - Flybridge helm (electronics down and protected)	13
Charisma - Flybridge helm chairs	13
Charisma - Flybridge helm (electronics up and ready for use)	13
Charisma	13
Charisma - Helm with Raymarine electronics and Fusion radio	14
Charisma - Flybridge helm 12V panel	14
Charisma - Flybridge bow view	14
Charisma - Bow facing aft	14
Charisma - Bow from starboard side	14
Charisma - Bow sun pad	14
Charisma - Windlass anchor and anchor line compartment	15
Charisma - Cockpit	15
Charisma - Cockpit #2	15
Charisma - Cockpit- shorepower access	15
Charisma - Transom livewell	15

Charisma - Cockpit compartment all closed	15
Charisma - Cockpit compartment grill and sink exposed	16
Charisma - Cockpit compartment grill and sink exposed #2	16
Charisma - Cockpit compartment- grill, sink, fridge exposed	16
Charisma - Cockpit compartment- grill, sink, fridge, tackle station exposed	16
Charisma - Salt/fresh water faucets; hot/cold water shower head	16
Charisma - Starboard engine	17
Charisma - Port engine	17
Charisma - Engine room aft	17
Charisma - 10 kw Generator	17
Charisma - Starboard propeller, rudder, shaft, and struts with fresh bottom paint (March 2018)	18
Charisma - Starboard running gear	18
Charisma - Port propeller, rudder, shaft, and struts with fresh bottom paint (March 2018)	18
Charisma - Port running gear	18
CONTACTS	19
Contact details	19
Telephones	19
Office hours	19
Address	19

SPECIFICATIONS

Overview

Charisma is absolutely the most beautiful and pristine kept 45 Silverton Convertible on the market today. Currently located up in Brunswick, GA at Brunswick Landing Marina. Her hull is a 2008, but she was bought brand new in 2010. With very low hours on her twin Volvo Penta D9575's, she's ready to serve her next owners and make many more memories.

Easy to see and be shown in Brunswick, GA

- 425 hours on Volvo Penta D9575's
- 1030 hours on 10kw Kohler Generator
- 2008, bought brand new in 2010 (in 2008 and 2009 kept inside storage in CT)
- Upgraded Lewmar bow thruster
- 3 Stateroom, 2 head layout
- 4 A/C units
- Corian countertops
- Central Vac
- 4 Sharp TV's (salon, master, vip, and twin berths)
- Washer and Dryer
- CO2 detectors in every room
- Solé DVD set up and stereo in each stateroom
- Carpet cover mats through salon and galley
- All 4 8D House Batteries (September 2017)
- Stairs and bridge carpet replaced in 2017
- Fresh Bottom Paint and Zincs (March 2018)
- Brand new high performance trim tabs installed (March 2018)

Salon/Galley:

- Bose stereo and surround system
- L-shape sofa with recliner and storage
- Sharp TV
- Adjustable high/low table (salon)
- Cherrywood galley table with cover
- Corian countertops
- Cherrywood cabinets and woodwork
- Conventional and rotisserie microwave oven
- Princess 3 burner stove top
- Subzero refrigerator, freezer and ice maker.

Master Stateroom:

- Queen berth with storage underneath

- Full head
- Separate stereo and sound system
- Sharp TV
- Solé dvd player and sound system
- Cherrywood cabinets and closets

VIP Stateroom:

- Queen berth
- Sharp TV
- Solé dvd and sound system
- Location for washer and dryer
- Central vac access compartment

Twin Berth:

- Sharp TV with Solé dvd system and stereo
- Cedar wood for closets and storage
- Connecting door to day head/ guest bathroom

Flybridge:

- Carpet on stairs and flybridge
- Storage underneath forward and side bench seats
- E Z 2 C Y isinglass (front panel)
- Strada glass enclosure (sides and rear)
- A/C
- Refrigerador and freezer

Cockpit:

- In-deck fish box
- Livewell with outside breakers and switches
- 50 am shorepower
- Hot/cold water shower head
- Transom door
- Swim platform big enough to transport a tender

Basic Information

Category: Sport Fisherman

Sub Category: Convertible

Model Year: 2008

Year Built: 2008

Country: United States

Dimensions

LOA: 45' 0" (13.72m)

Beam: 15' 3" (4.65m)

Max Draft: 4' 5" (1.35m)

Speed, Capacities and Weight

Displacement: 45000 Pounds

Water Capacity: 200 Gallons

Holding Tank: 72 Gallons

Fuel Capacity: 608 Gallons

Accommodations

Total Cabins: 3

Total Berths: 3

Total Heads: 2

Hull and Deck Information

Hull Material: Fiberglass

Engine Information

Manufacturer: Volvo

Model: Penta

Engine Type: Inboard

Fuel Type: Diesel

PHOTOS

Charisma - Feature starboard side (aft view)



Charisma - Bow facing aft



Charisma - Starboard side facing forward



Charisma - Port side (cruising underway)



Charisma - Entrance to salon and galley



Charisma - Salon and galley



Charisma - Galley table



Charisma - Salon couch and high/low table



Charisma - Media and tv center



Charisma - Sharp TV for the salon



Charisma - Galley



Charisma - Galley #2



Charisma - Galley #3



Charisma - Master stateroom bed



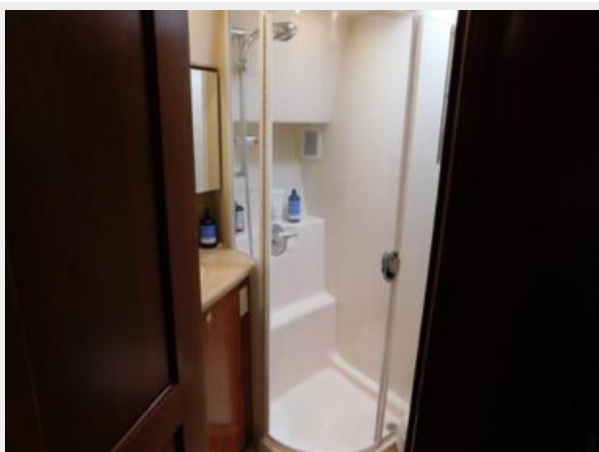
Charisma - Master stateroom left side



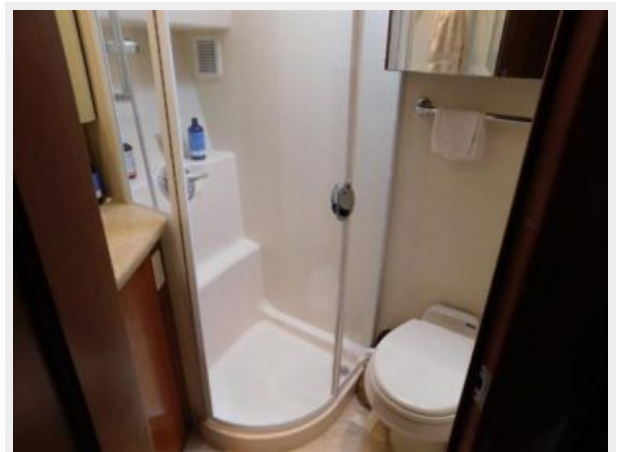
Charisma - Master stateroom right side



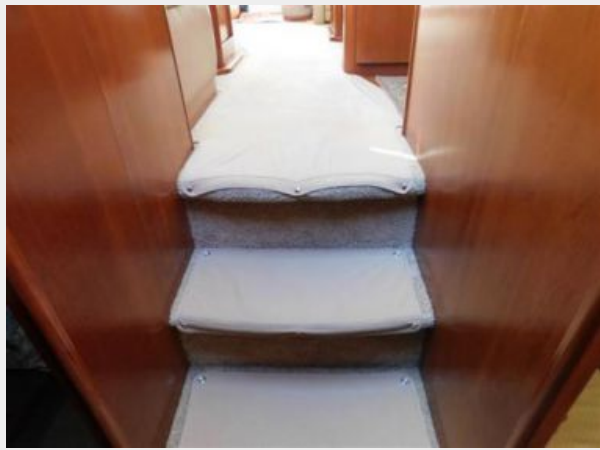
Charisma - Master stateroom full head



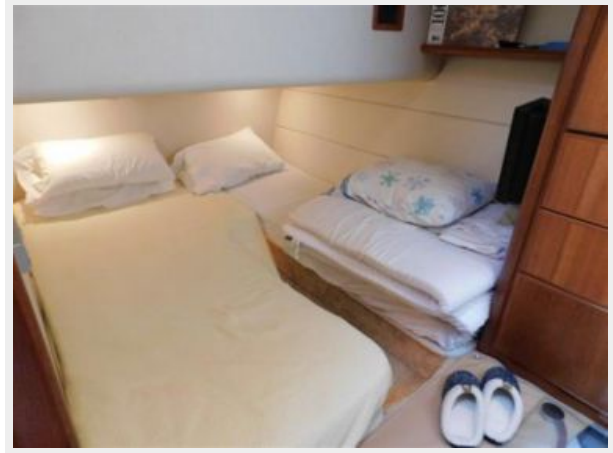
Charisma - Master stateroom full head #2



Charisma - Carpet covers inside salon, galley, and downstairs hallway



Charisma - Port side- Twin berth



Charisma - Twin berth with Sharp TV view



Charisma - Twin berth entrance



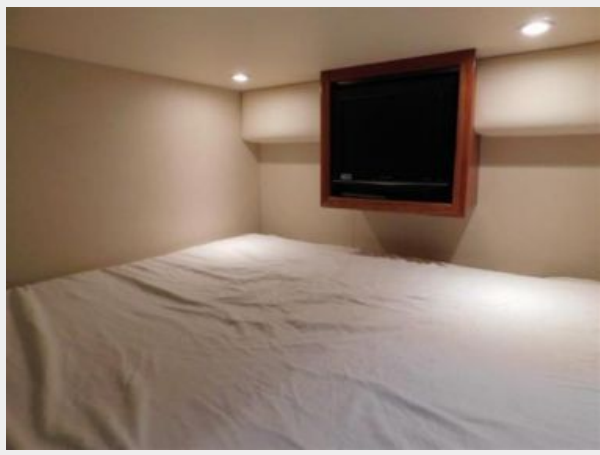
Charisma - Day head/guest bathroom



Charisma - VIP stateroom queen berth



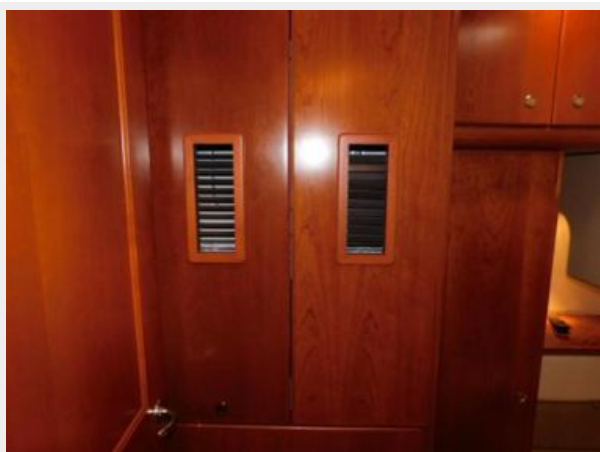
Charisma - VIP stateroom with Sharp TV



Charisma - VIP stateroom with central vac access compartment



Charisma - VIP stateroom entrance/access to washer and dryer units



Charisma - Washer and Dryer units



Charisma - Solé DVD and surround system in each stateroom



Charisma - Stairs to the flybridge



Charisma - Flybridge starboard side seating



Charisma - Flybridge center and port side seating bench



Charisma - Flybridge helm chairs



Charisma - Flybridge helm (electronics down and protected)



Charisma



Charisma - Flybridge helm (electronics up and ready for use)



Charisma - Helm with Raymarine electronics and Fusion radio



Charisma - Flybridge helm 12V panel



Charisma - Flybridge bow view



Charisma - Bow facing aft



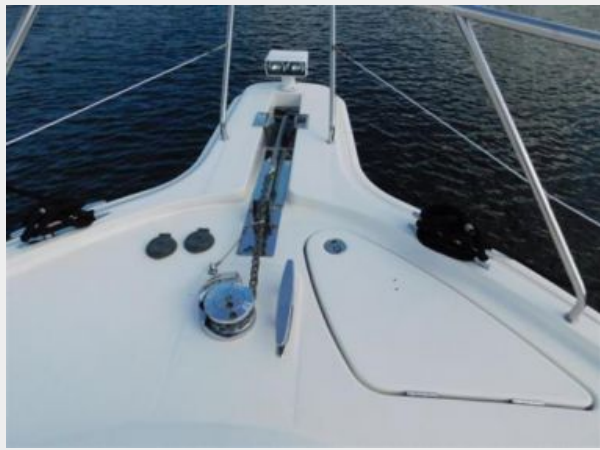
Charisma - Bow from starboard side



Charisma - Bow sun pad



Charisma - Windlass anchor and anchor line compartment



Charisma - Cockpit



Charisma - Cockpit #2



Charisma - Cockpit- shorepower access



Charisma - Transom livewell



Charisma - Cockpit compartment all closed



Charisma - Cockpit compartment grill and sink exposed



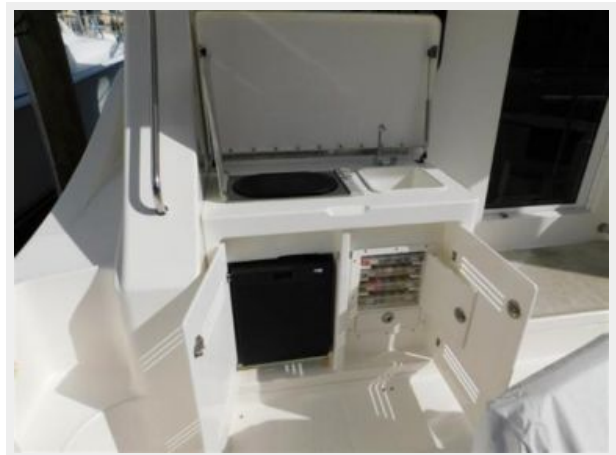
Charisma - Cockpit compartment grill and sink exposed #2



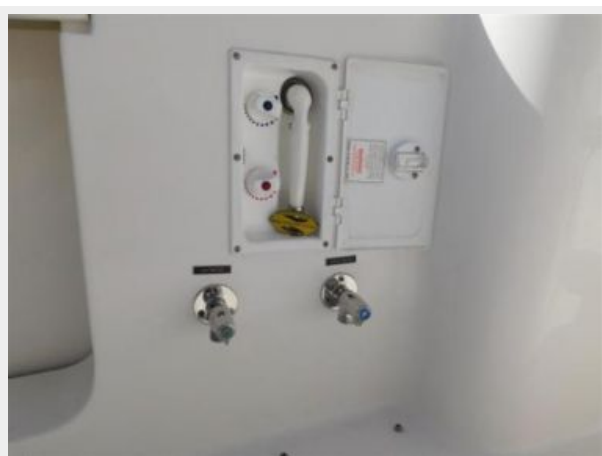
Charisma - Cockpit compartment- grill, sink, fridge exposed



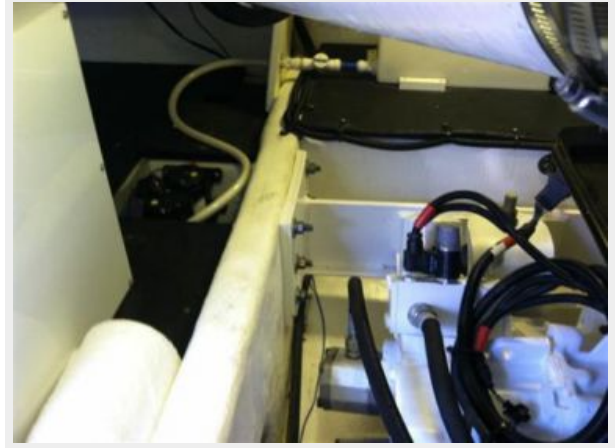
Charisma - Cockpit compartment- grill, sink, fridge, tackle station exposed



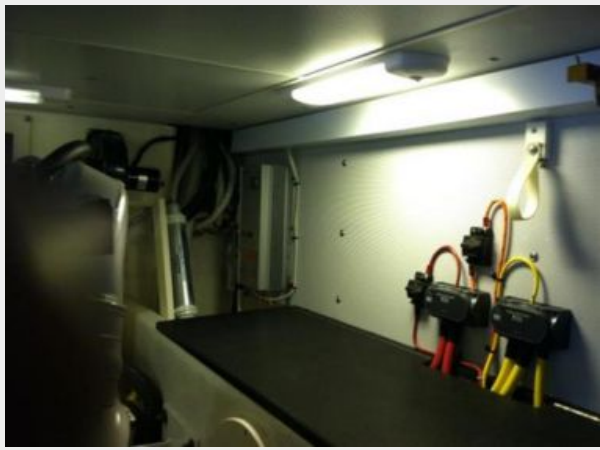
Charisma - Salt/fresh water faucets; hot/cold water shower head



Charisma - Starboard engine



Charisma - Port engine



Charisma - Engine room aft



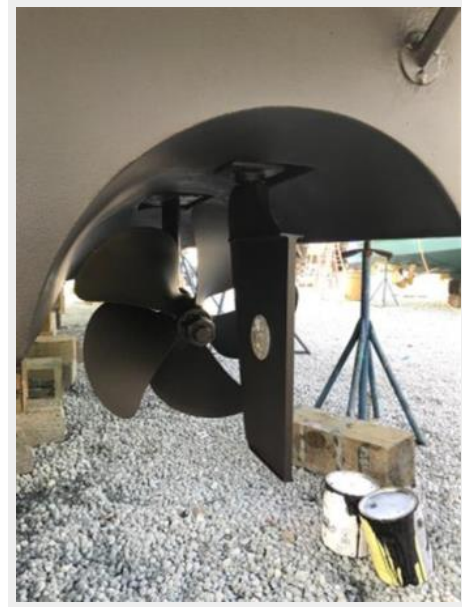
Charisma - 10 kw Generator



Charisma - Starboard propeller, rudder, shaft, and struts with fresh bottom paint (March 2018)



Charisma - Starboard running gear



Charisma - Port running gear



Charisma - Port propeller, rudder, shaft, and struts with fresh bottom paint (March 2018)



CONTACTS

Andrey Shestakov, leading yacht broker of the sales department of Shestakov Yacht Sales Inc. Shestakov Yacht Sales Inc., the official representative of the Miami/Fort Lauderdale FL headquarters.

Contact details

Email: andrey@shestakovyachtsales.com

Web: shestakovyachtsales.com/en/

Telephones

USA: +1(954)274-4435

Office hours

Monday – Saturday: **9:00 - 21:00** EDT

Sunday: **closed**

Address



Harbour Towne Marina, 850 NE 3rd St,
STE 213, Dania, FL 33004