

48 1995 HATTERAS — HATTERAS



Builder: HATTERAS

Year Built: 1995

Model: Motor Yacht

Price: PRICE ON APPLICATION

Location: United States

LOA: 48' 0" (14.63m)

Beam: 16' 0" (4.88m)

Max Draft: 5' 6" (1.68m)

Our experienced yacht broker, Andrey Shestakov, will help you choose and buy a yacht that best suits your needs 48 1995 Hatteras — HATTERAS from our catalogue. Presently, at Shestakov Yacht Sales Inc., we have a wide variety of yachts available on our sale's list. We also work in close contact with all the big yacht manufacturers from all over the world.

If you would like to buy a yacht 48 1995 Hatteras — HATTERAS or would like help answering any questions concerning purchasing, selling or chartering a yacht, please call +1(954)274-4435

TABLE OF CONTENTS

TABLE OF CONTENTS	2
SPECIFICATIONS	3
Overview	3
Basic Information	3
Dimensions	4
Speed, Capacities and Weight	4
Accommodations	4
Hull and Deck Information	4
Engine Information	4
DETAILED INFORMATION	5
Features	5
Exclusions	6
Disclaimer	6
PHOTOS	7
CONTACTS	16
Contact details	16
Telephones	16
Office hours	16
Address	16

SPECIFICATIONS

Overview

The 48' Hatteras is a deluxe, quality built cruising yacht featuring classic styling, space and comfort. The wide 16 foot beam permits an expansive floorplan with three staterooms, and an expansive salon. The large aft deck is also expansive and is great for entertaining. This 48' Hatteras Motor Yacht is a quality built MY from one of Americas premier builders. Di Del Mar is being detail, is in excellent condition and shows like new. If your looking for a long range quality built motor yacht in excellent condition , look no further.

Features:

Three staterooms, three heads (two ensuite heads and one across from the third guest stateroom).

8V-92 TA DDEC Detroit Diesels - 735 HP with 1111 hrs on the engines

20 kW Onan Generator - plenty of power for the entire vessel

"Kenyon" Frontier Electric Grill on the Aft Deck

"Uline" Refrigerator/ Freezer on the Aft Deck

"Whirlpool" separate Washer/ dryer

Aluminum Side Boarding ladder with cork treads

Electric Cablemaster for 50 amp Shore power cord

AB Navigo 10 VSX Tender w/ 30hp 4 stroke Tohatshu outboard engine

Mar-Quipt dinghy davit on aft deck rooftop

Basic Information

Category: Motor Yacht

Model Year: 1995

Year Built: 1995

Country: United States

Dimensions

LOA: 48' 0" (14.63m)

Beam: 16' 0" (4.88m)

Max Draft: 5' 6" (1.68m)

Clearance: 16' 8" (5.08m)

Speed, Capacities and Weight

Displacement: 63000 Pounds

Water Capacity: 170 Gallons

Holding Tank: 100 Gallons

Fuel Capacity: 764 Gallons

Accommodations

Total Cabins: 3

Total Heads: 3

Hull and Deck Information

Hull Material: Fiberglass

Engine Information

Engines: 2

Manufacturer: Detroit Diesel

Model: 8V-92TA DDEC

Engine Type: Inboard

Fuel Type: Diesel

DETAILED INFORMATION

Features

Overall description

This 48' Motor Yacht features conservative styling, luxurious accommodations to include three staterooms (two with ensuite heads) and one with double bunks. Also included is a fully equipped galley with a convection oven and a dinette directly across from the galley. The wraparound salon windows provide panoramic outside views and has a pullout couch which adds an additional sleeping area. Owner has installed flat screen TVs throughout and all interior areas are air conditioned. The forward stateroom has a centerline queen, the master has a walkaround queen berth and the third stateroom has upper and lower bunks.

The entire interior is in excellent condition and shows like new.

Deck

Starting at the bow;

Heavy duty windlass with up and down foot controls, Lewmar 66 lb claw anchor with approx. 300 feet of chain. Two small dock boxes are located on the port and starboard sides of the foredeck. Full bridge enclosure Full cockpit enclosure AB tender mounted on the aft cockpit hardtop with MarQuip davit A full size swim platform

Cockpit: Full size teak table with chairs Port and starboard wing doors Uline refrigerator with small freezer Full wet bar to port Electric grill mounted over a locker Three steps up to the bridge

Accommodations

Forward stateroom with centerline berth Flat screen TV Plenty of storage Ensuite head to port Privacy door Washer and dryer Fully equipped galley Dinette to starboard

Main salon with a U-shaped settee Flat screen TV Electrical panel Clarion stereo system

Second stateroom to port with upper and lower bunks Full size head across from the stateroom Master suite to aft Full size walkaround berth Flat screen TV Ensuite head Lots of storage

Bridge/Helm station

Full enclosure Two side by side Captain's chairs L-shaped settee to port Straight settee to starboard **Helm:** Ritchie compass Robertson AP300X Robertson Dataline Icom DSC VHF

Garmin GPS map chartplotter and a Furuno chartplotter Furuno 48 mile radar

Galley

The mid level full galley is forward of the salon and down two steps with the work area and appliances to port and the face to face convertible dinette to starboard. Equipped with the following: Bloomberg full size refrigerator with freezer Princess two burner cooktop GE Profile Convection oven Double stainless sink

Electrical

Four 8D wet cell batteries Separate bow thruster battery Battery disconnect switch Battery charger Separate battery charger for the bow thruster Newmar DC converter Shore power electric cable handler

Other

AB Navigo 10' tender 30HP Tohatsu 4 stroke outboard Heavy duty MarQuipt davit All mounted on the aft deck hardtop

Exclusions

Owner's personal belongings.

Disclaimer

The Company offers the details of this vessel or yacht in good faith but cannot guarantee or warrant the accuracy of this information nor warrant the condition of the vessel. A buyer should instruct his representatives, agents, or his surveyors, to investigate such details as the buyer desires validated. This vessel or yacht is offered subject to prior sale, price change, or withdrawal without notice.

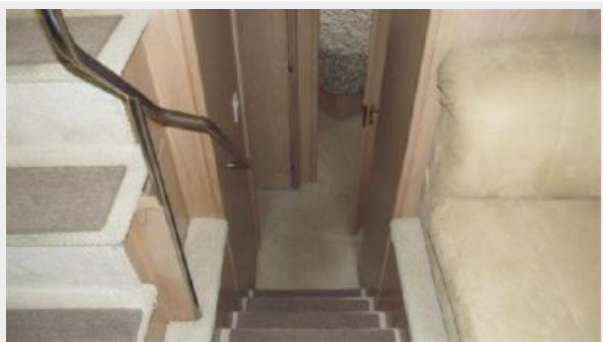
PHOTOS

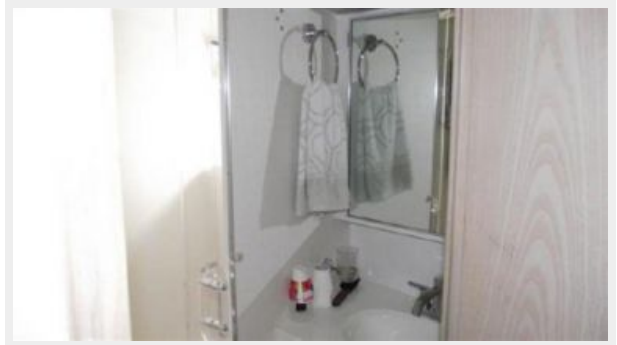


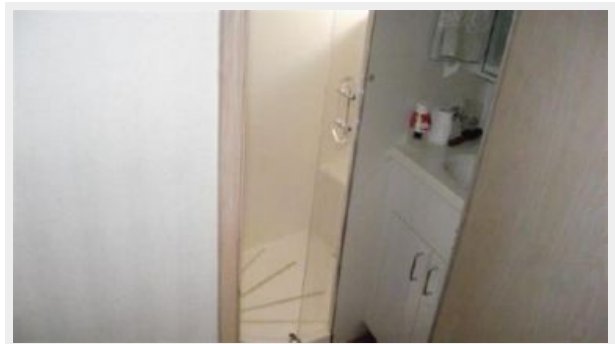
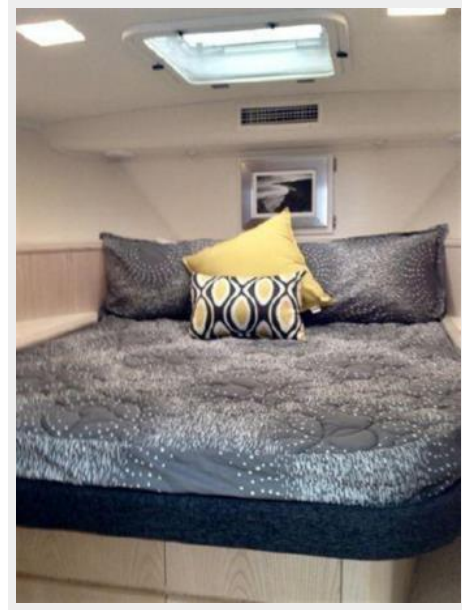


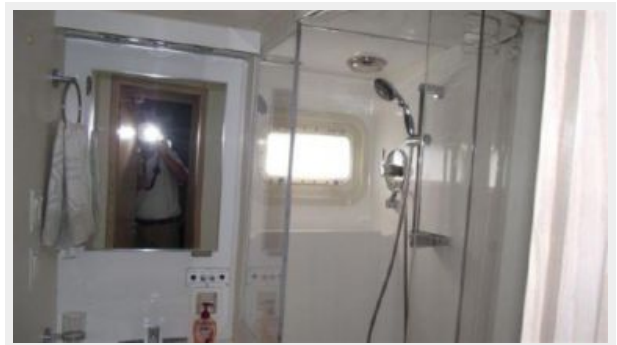
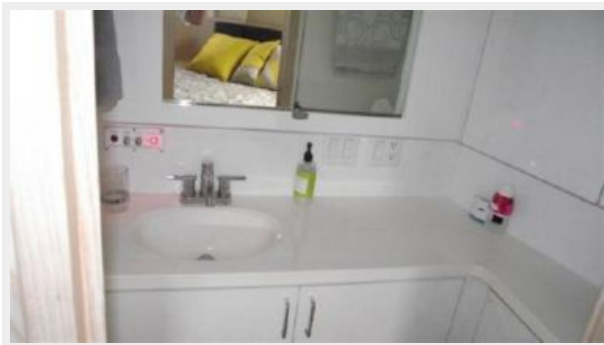
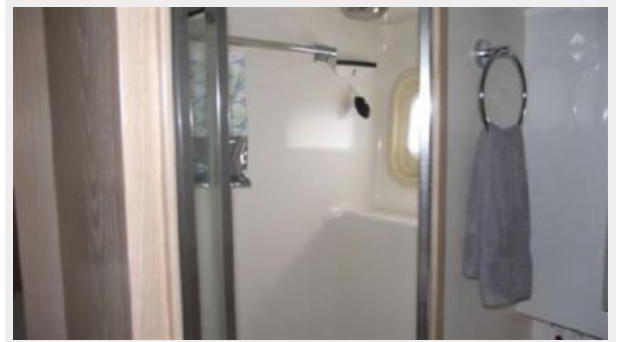














CONTACTS

Andrey Shestakov, leading yacht broker of the sales department of Shestakov Yacht Sales Inc. Shestakov Yacht Sales Inc., the official representative of the Miami/Fort Lauderdale FL headquarters.

Contact details

Email: andrey@shestakovyachtsales.com

Web: shestakovyachtsales.com/en/

Telephones

USA: +1(954)274-4435

Office hours

Monday – Saturday: **9:00 - 21:00** EDT

Sunday: **closed**

Address



Harbour Towne Marina, 850 NE 3rd St,
STE 213, Dania, FL 33004