

## OVERSHADOWED — CATALINA



**Builder:** CATALINA

**Year Built:** 1995

**Model:** Cruising Sailboat

**Price:** PRICE ON APPLICATION

**Location:** United States

**LOA:** 42' 0" (12.80m)

**Beam:** 13' 10" (4.22m)

**Min Draft:** 4' 10" (1.47m)

**Max Draft:** 5' 2" (1.57m)

**Cruise Speed:** 7 Kts. (8 MPH)

**Max Speed:** 8 Kts. (9 MPH)

Our experienced yacht broker, Andrey Shestakov, will help you choose and buy a yacht that best suits your needs **Overshadowed — CATALINA** from our catalogue. Presently, at Shestakov Yacht Sales Inc., we have a wide variety of yachts available on our sale's list. We also work in close contact with all the big yacht manufacturers from all over the world.

If you would like to buy a yacht **Overshadowed — CATALINA** or would like help answering any questions concerning purchasing, selling or chartering a yacht, please call **+1(954)274-4435**

---

# TABLE OF CONTENTS

---

TABLE OF CONTENTS	2
SPECIFICATIONS	3
Overview	3
Basic Information	3
Dimensions	3
Speed, Capacities and Weight	4
Accommodations	4
Hull and Deck Information	4
Engine Information	4
DETAILED INFORMATION	5
Features	5
Exclusions	5
Disclaimer	5
PHOTOS	6
CONTACTS	17
Contact details	17
Telephones	17
Office hours	17
Address	17

---

# SPECIFICATIONS

---

## Overview

---

If you are serious about **SAILING** or **CRUISING** you must see this boat. She has been rigged by a knowledgeable owner. She sleeps six comfortably in 3 cabins. The large salon can feed the entire crew and will also become a King size bed. This boat is fully equipped, all that is needed is the crew and drinks.

Our **Catalina MK II** is an impeccable example of the **BEST** Catalina in the USA. For starters, the Yanmar 50 has 1305 engine hrs. and the Fischer Panda has 558 hrs (9/2002). The rest of the boat is in **VERY GOOD** condition, **No Joke!** Some of the newer equipment (6 years or less); Macerator pumps with Y valves(2), Raymond ST 60 Wind, X-30 Wind, ST 7002 Auto Pilot, Furuno 1623 Radar, Fusion Stereo 600G & iPad Dock, Ray UHF 55. Ray Graphic Display RS 130, Microwave, Fuel Gauge. New Barrier Coat (Seahawk), Boot Strips (Algrip) Bottom Paint (Trinidad) New Catalina Mainsail, Marine Air Control Board, Mainsail, Prop Shaft Yanmar Coupling Cutlass PSS Shaft Seal.

And: Large Pantry, Princess 3 Burner Propane Stove, Battery Parallel Switch,, Raw Water Sea Strainer, Fresh Water Cooling System, 30 Amp Galvanic Isolator. Doyle APC Spinnaker 1.5 min Nylon.

The Best, Bird Prevention System Designed by Owner. It Works, No Birds! (No Patent Yet!)

---

## Basic Information

---

**Category:** Cruising Sailboat

**Model Year:** 1995

**Year Built:** 1995

**Country:** United States

---

## Dimensions

---

**LOA:** 42' 0" (12.80m)

**LWL:** 36' 0" (10.97m)

**Beam:** 13' 10" (4.22m)

**Min Draft:** 4' 10" (1.47m)

**Max Draft:** 5' 2" (1.57m)

---

## Speed, Capacities and Weight

---

**Cruise Speed:** 7 Kts. (8 MPH)

**Cruise Speed RPM:** 2800 Kts.

**Max Speed:** 8 Kts. (9 MPH)

**Displacement:** 20500 Pounds

**Water Capacity:** 115 Gallons

**Holding Tank:** 52 Gallons

**Fuel Capacity:** 38 Gallons

---

## Accommodations

---

**Total Cabins:** 2

**Total Berths:** 4

**Total Heads:** 2

---

## Hull and Deck Information

---

**Hull Material:** Fiberglass

**Hull Finish:** Plastic

**Hull Designer:** Gerry Douglas

---

## Engine Information

---

**Engines:** 1

**Manufacturer:** Yanmar

**Model:** 4JHBE

**Engine Type:** Inboard

**Fuel Type:** Diesel

---

# DETAILED INFORMATION

---

## Features

---

**Electronics** GPS Plotter - Ray RS 130 VHF - President Compass TV set - Scyworth Navigation center Radar - Furano 1623 Autopilot - Ray X-30 Corepack Wind speed and direction - Ray ST 60 **Sails** Spinnaker - Doyle APC 1.5 Nylon ATN Sleeve Furling mainsail - Schafer 3000 **Rigging** Steering wheel - Stainless **Inside Equipment** Air conditioning - 16000 Marine AC Deep freezer Manual bilge pump Battery charger - 3 Batteries Microwave oven Marine head Electric bilge pump Refrigerator Hot water **Electrical Equipment** Generator - Fischer Panda 558 hrs, Shore power inlet - 50 ft Electrical Circuit: 110V **Outside Equipment/Extras** Cockpit cushions Swimming ladder Electric windlass **Covers** Bimini Top

## Exclusions

---

Owner's personal belongings.

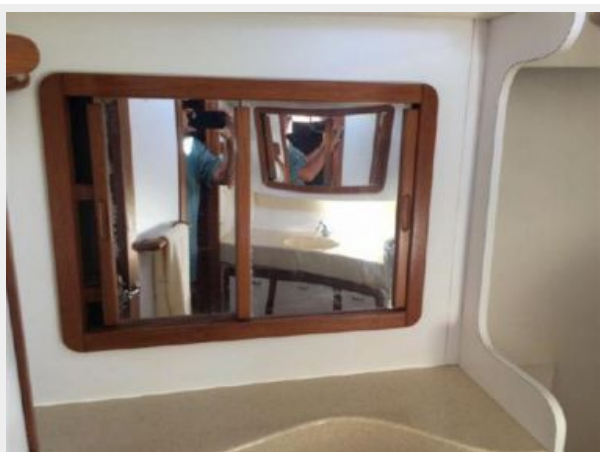
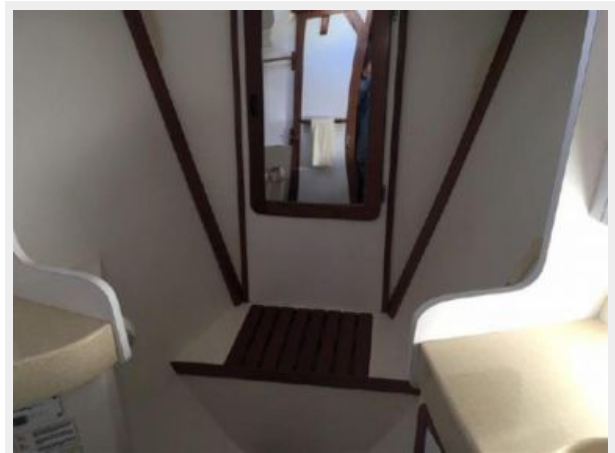
## Disclaimer

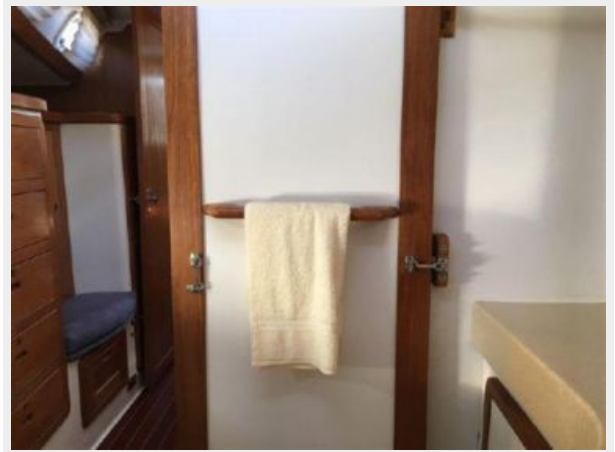
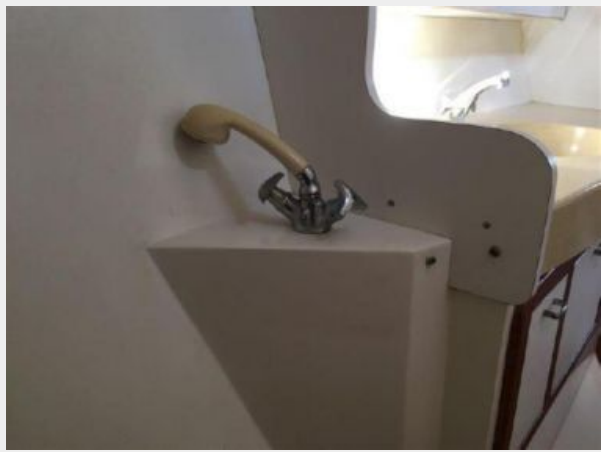
---

The Company offers the details of this vessel or yacht in good faith but cannot guarantee or warrant the accuracy of this information nor warrant the condition of the vessel. A buyer should instruct his representatives, agents, or his surveyors, to investigate such details as the buyer desires validated. This vessel or yacht is offered subject to prior sale, price change, or withdrawal without notice.

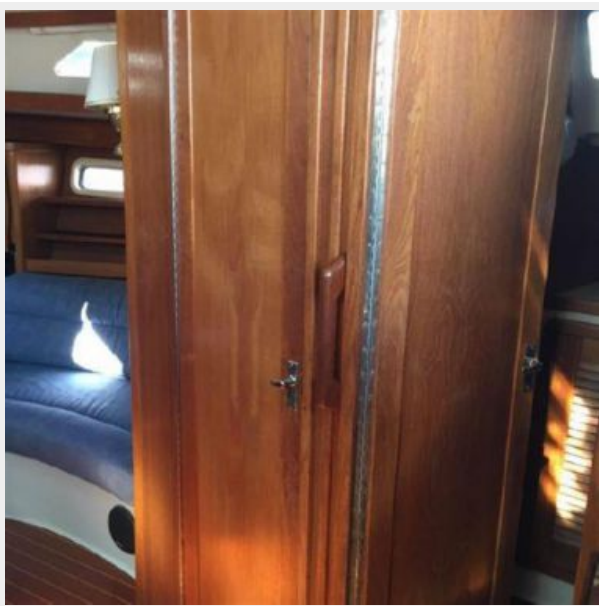
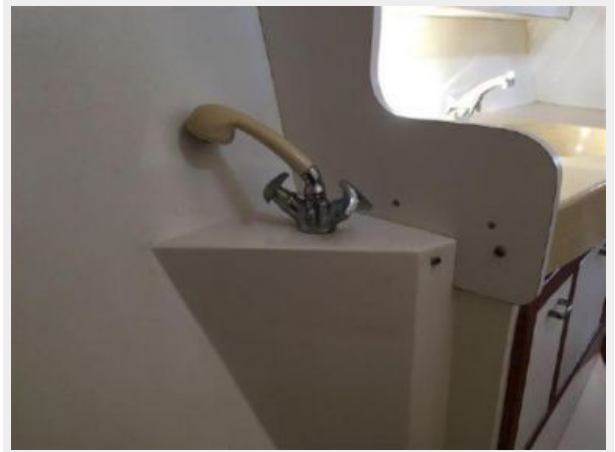
# PHOTOS







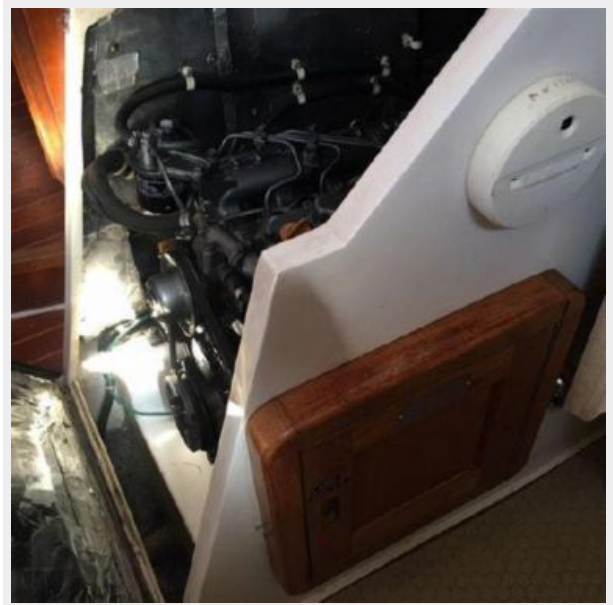




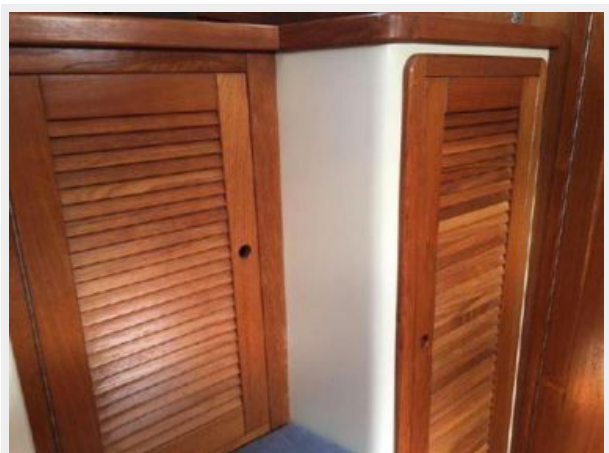
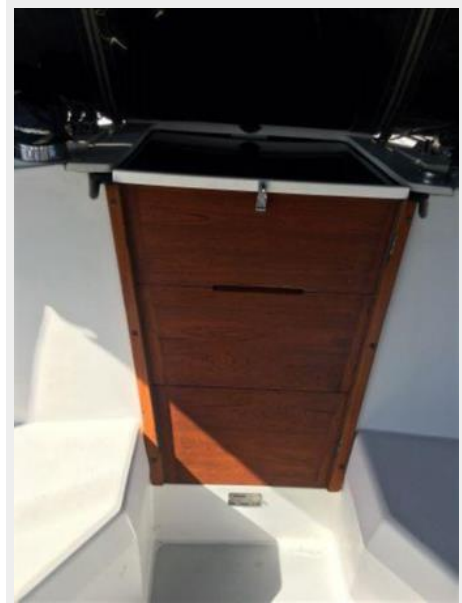
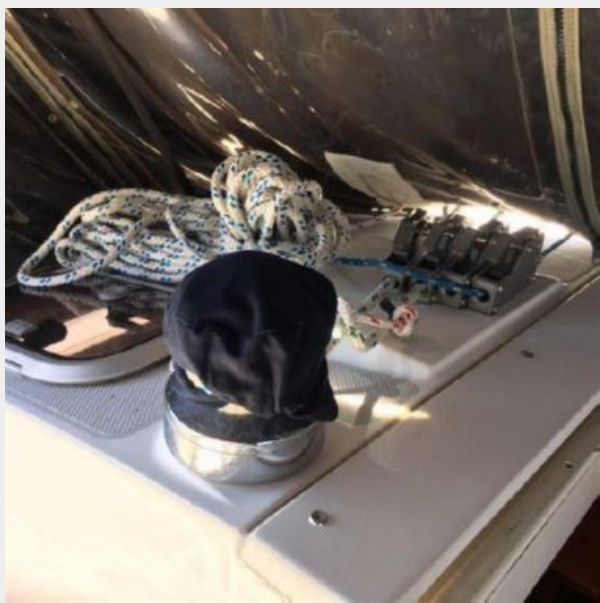
















---

# CONTACTS

---

Andrey Shestakov, leading yacht broker of the sales department of Shestakov Yacht Sales Inc. Shestakov Yacht Sales Inc., the official representative of the Miami/Fort Lauderdale FL headquarters.

---

## Contact details

---

Email: [andrey@shestakovyachtsales.com](mailto:andrey@shestakovyachtsales.com)

Web: [shestakovyachtsales.com/en/](http://shestakovyachtsales.com/en/)

---

## Telephones

---

USA: +1(954)274-4435

---

## Office hours

---

Monday – Saturday: **9:00 - 21:00** EDT

Sunday: **closed**

---

## Address

---



Harbour Towne Marina, 850 NE 3rd St,  
STE 213, Dania, FL 33004