

SERENITY — BENETEAU



Судостроитель: BENETEAU

Год постройки: 2015

Модель: Крейсерская яхта

Цена: ЦЕНА ЯХТЫ ПО ЗАПРОСУ

Местонахождение: United States

Длина общая: 38' 0" (11.58m)

Ширина: 13' 1" (3.99m)

Макс. осадка: 5' 3" (1.60m)

Купить **Serenity — BENETEAU** а также выбрать подходящую вам яхту из нашего каталога яхт вам поможет опытный яхтенный брокер Андрей Шестаков. На сегодняшний день компания **Shestakov Yacht Sales Inc.** имеет большое количество яхт в собственном списке продаж, а также тесно сотрудничает со всеми крупными яхтенными производителями по всему миру.

Для того чтобы купить яхту **Serenity — BENETEAU** а также проконсультироваться по любому вопросу связанному с покупкой, продажей, чартером яхт позвоните по телефону **+7(918)465-66-44**.

ОГЛАВЛЕНИЕ

| | |
|-------------------------------|----|
| ОГЛАВЛЕНИЕ | 2 |
| ХАРАКТЕРИСТИКИ | 3 |
| Обзор | 3 |
| Основная информация | 4 |
| Размеры | 4 |
| Скорость, вместимость и масса | 4 |
| Размещение | 4 |
| Корпус и палуба | 4 |
| Информация о двигателе | 4 |
| ПОДРОБНОЕ ОПИСАНИЕ | 5 |
| Features | 5 |
| Исключения | 6 |
| Отказ от ответственности | 6 |
| ФОТОГРАФИИ | 7 |
| КОНТАКТЫ | 15 |
| Контактная информация | 15 |
| Телефоны | 15 |
| Время работы | 15 |
| Адрес | 15 |

ХАРАКТЕРИСТИКИ

Обзор

Owner wants her sold and has authorized a major price reduction. Serenity may be a 2015 but she shows and looks like a new boat. With only 54 hours on the 30HP Yanmar and very little use (the stove has never been used) this vessel is priced to sell and is a great buy. It's like buying a new boat at a used boat price. **Here is a recent review of this vessel:**

"The flexible nature of the interior and cockpit will appeal to singles, young couples, small families and to those whose children have sailed out of the house. Under sail and power the 38 handled exceptionally well and with a manageable sail plan this boat will have buyers away from the dock and under sail in short order for a day sail or weekend. For those with aspirations of longer distance cruising, I see the Oceanis 38 as an excellent coastal cruising platform that, with the right gear added, will be comfortable to live aboard at anchor, on a mooring or at a dock and will also make for a boat that can complete respectable daily runs."

"All in all, it looks as though the Beneteau Oceanis 38 is going to live up to the hype it has been getting, and for good reason. With a design that goes outside the box, we'll surely be seeing lots of these boats out for day sails, weekends and longer cruises."

The Beneteau Oceanis 38 shares the angular good looks of the rest of the Oceanis line and also breaks new ground in the area of interior design. Like most of Beneteau's recent designs, the Oceanis 38 has aggressive angular lines with a nearly plumb bow and a slightly reverse transom. The low cabintop provides a nice profile while belying the amount of volume and headroom below.

Beam is carried well aft to a wide stern, but the boat's twin rudders allow the hull to grip the water regardless of heel angle. A hard chine flowing from well forward all the way aft also helps keep the Oceanis 38 sailing up to five degrees flatter than it otherwise would. For anyone who's had to brace themselves in a gust, that certainly makes a difference.

The hull is molded in polyester, with a hull liner bonded in at the beginning of the assembly process to increase stiffness. The deck is injection molded with a Saerfoam core to increase strength and reduce weight, after which it is secured to the hull with adhesives and screws, and then "trimmed" with a 1-inch toerail. The keel is cast iron. The rudder stocks are stainless steel. **Features include: Bow thruster Electric winch Two AC units New batteries Twin helm stations Fold down transom swim platform In-mast furling main sail Reachor head sail with furling Self tacking furling jib Autopilot Bimini and dodger Much more, see full description for more details.**

Основная информация

Тип судна: Крейсерская яхта

Модельный год: 2015

Год постройки: 2015

Страна: United States

Размеры

Длина общая: 38' 0" (11.58m)

Длина по ватерлинии: 35' 2" (10.72m)

Ширина: 13' 1" (3.99m)

Макс. осадка: 5' 3" (1.60m)

Трапы: 55' 5" (16.89m)

Скорость, вместимость и масса

Водоизмещение: 14930 Pounds

Вместимость воды: 34 Gallons

Вместимость сточного бака: 21 Gallons

Объем топливного бака: 34 Gallons

Размещение

Всего кают: 2

Всего ком. состава: 1

Корпус и палуба

Материал корпуса: Fiberglass

Информация о двигателе

Двигатели: 1

Производитель: Yanmar

Модель: 3YM30

Тип двигателя: Inboard

Тип топлива: Diesel

ПОДРОБНОЕ ОПИСАНИЕ

Features

Deck

The 9/10ths fractional rig is supported by double sweptback spreaders and flies 748 square feet of sail split between a 103 percent genoa on a Facnor furler and a traditional mainsail, built by Elvstrom. The deck-stepped Z-Spars mast has been moved aft and is centered over the keel to create a slightly larger foretriangle for more power. Most of the rest of the deck hardware is Harken, including both primary and cabintop winches.

Twin helms open up the middle of the cockpit, and there is good access from the companionway all the way aft, where Beneteau's signature hinged transom drops down into a formidable swim platform that seems to add another dimension to the deck plan. The side decks are wide and easy to maneuver on, and there are good handholds on the cabintop.

Starting at the bow: Danforth anchor with combination chain and rode Quick windlass with handheld control Anchor locker Anchor washdown Arch over companionway Standard mast 9/10 anodized aluminum Anodized aluminum boom Stainless steel standard rigging ! backstay Rigid boom vang Self tracking jib furling system Rigging run back to cockpit Complete running rigging: main halyard, jib halyard, boom topping lift with cleat on mast, mainsheet, 2 reefing lines, 2 automatic reefing system Full canvas enclosure with dodger Large cockpit area with two steering wheel consoles Cockpit folding table Propane locker Transom hot and cold shower Emergency tiller Folding transom swim platform Swim ladder

Accommodations

The two cabin layout is spacious, light and airy with plenty of windows for great views. Interior features include: Two staterooms Removable master stateroom partition' 5" salon headroom Two AC systems Full galley with refrigerator, propane stove with oven (never used) and stainless sink Large dining table U seating to port Chart table with reading light VHF with remote Stereo system Brown oak laminated sole One head with electric toilet Separate shower room Large storage locker

Electronics

B&G combination chartplotter and radar Autopilot Compass on each steering console Wind indicator Bow thruster control on port side steering console

Sails & Rigging

Reacher Furling mainsail 323 sq. ft. Tracking jib 269 sq. ft. Self-tacking jib hardware Winches: 1 electric winch, 1 coach roof winch self-tailing Rigging run back to cockpit

Исключения

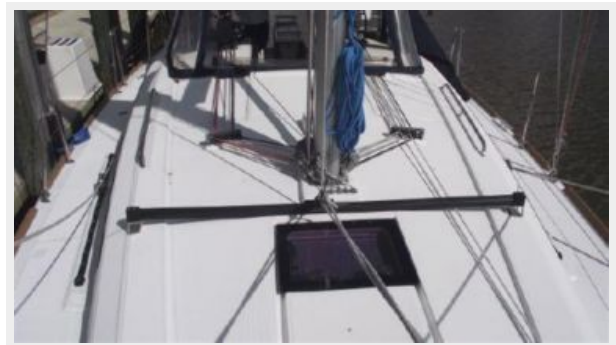
При продаже яхты исключаются личные вещи владельца.

Отказ от ответственности

Компания предоставляет описание судна или яхты добросовестно, но не может гарантировать точность этой информации, а также не ручается за техническое состояние. Покупатель должен проинструктировать своих агентов или оценщиков исследовать представленную информацию более подробно, по собственному желанию. Продажа судна или яхты, изменение цены или снятие с продажи будет происходить без предварительного уведомления.

ФОТОГРАФИИ

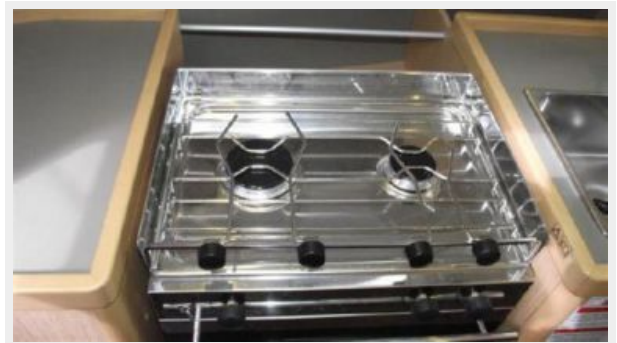


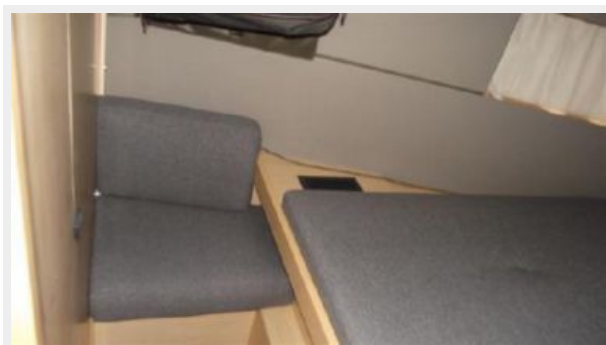


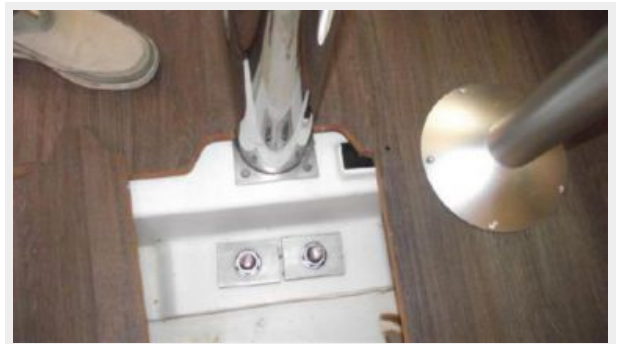












КОНТАКТЫ

Андрей Шестаков (Andrey Shestakov) – ведущий яхтенный брокер отдела продаж яхт и судов компании Shestakov Yacht Sales Inc. Официальный представитель Shestakov Yacht Sales Inc. для русскоговорящих клиентов в центральном офисе компании в Майами/Форт Лодердейл/Флорида/США.

Контактная информация

Email: andrey@shestakovyachtsales.com

Web: shestakovyachtsales.com

Телефоны

Краснодарский край: **+7(918)465-66-44**

США, Майами, Флорида: **+1(954)274-4435**

Время работы

Понедельник – Суббота: **9:00 - 21:00**
EDT

Воскресенье: **Закрето**

Адрес



Harbour Towne Marina, 850 NE 3rd St,
STE 213, Dania, FL 33004