

36 1981 S2 11.0 C — S2 YACHTS



Builder: S2 YACHTS

Year Built: 1981

Model: Cruising Sailboat

Price: PRICE ON APPLICATION

Location: United States

LOA: 36' 0" (10.97m)

Beam: 11' 11" (3.63m)

Max Draft: 4' 6" (1.37m)

Our experienced yacht broker, Andrey Shestakov, will help you choose and buy a yacht that best suits your needs 36 1981 S2 11.0 C — S2 YACHTS from our catalogue. Presently, at Shestakov Yacht Sales Inc., we have a wide variety of yachts available on our sale's list. We also work in close contact with all the big yacht manufacturers from all over the world.

If you would like to buy a yacht 36 1981 S2 11.0 C — S2 YACHTS or would like help answering any questions concerning purchasing, selling or chartering a yacht, please call +1(954)274-4435

TABLE OF CONTENTS

TABLE OF CONTENTS	2
SPECIFICATIONS	3
Overview	3
Basic Information	3
Dimensions	3
Accommodations	3
Hull and Deck Information	3
Engine Information	4
DETAILED INFORMATION	5
Features	5
Exclusions	8
Disclaimer	8
PHOTOS	9
CONTACTS	18
Contact details	18
Telephones	18
Office hours	18
Address	18

SPECIFICATIONS

Overview

Here is a very nice cruising high demand Center Cockpit that is turn key and water ready. Boat is very well taken care of by the seller, clean inside and out, runs perfect, and stored on the hard every hurricane season. Seller has a bay on the way and will not be boating for another 3-5 years so his boat is on the market now. Please contact us today, or you may miss the boat tomorrow!

*Pathfinder Marine 50 HP Diesel Engine, *Bimini Top w Full Enclosure. *Refrigeration w Freezer, *Garmin GPS and Chart Plotter, *Auto Pilot, Sails are Good to Excellent, *Rigging Very Good, *Boat is Turn Key, *Ample Spare Parts, Much More See Full Specs!!

Basic Information

Category: Cruising Sailboat

Sub Category: Center Cockpit

Model Year: 1981

Year Built: 1981

Country: United States

Cockpit: Yes

Dimensions

LOA: 36' 0" (10.97m)

LWL: 28' 4" (8.64m)

Beam: 11' 11" (3.63m)

Max Draft: 4' 6" (1.37m)

Accommodations

Total Cabins: 1

Total Berths: 6

Total Heads: 1

Hull and Deck Information

Hull Material: Fiberglass

Engine Information

Engines: 1

Manufacturer: Pathfinder

Model: 1.6L

Engine Type: Inboard

Fuel Type: Diesel

DETAILED INFORMATION

Features

KEY FEATURES

Inboard diesel is a Pathfinder Marine 50.

Well maintained runs perfectly

Rocna 20 anchor (44 lbs) on the bow

Danforth anchor with chain and rode in stern locker.

Spare fuel filters

Spare oil filters

Refrigeration with freezer area.

Bathroom has a tub and shower.

Easy single handed sailing.

Garmin chart plotter with auto pilot.

ENGINE

Pathfinder 50 Marine Diesel is a Volkswagen Diesel Engine that carried game in the Volkswagen Rabbits and Golfs of their time.

The engines are very reliable and parts are still easy to find.

ALL NEW IN THE LAST TWO YEARS

New standing rigging

Newer running rigging

New transmission

New cutlass bearing

New stuffing box

New damper plate

New batteries House and Starting

New cushions inside

New sewage plumbing

New push button electric toilet

New mast head LED light

New belts

New alternator

New spare alternator

New starter

New fresh water pump

New bilge pumps

New dock lines

New exhaust

Sails inspected and any repairs made by local sail maker

New Complete bottom job.

New Epoxy barrier coat

New bottom paint

New heat exchanger boots (being installed now)

Prop Conditioned and Balanced

Turn Key and Water Ready!!

COCKPIT ACCOMMODATIONS

Seats 5 In Comfort

Full Bimini Top

Full Eisen Glass Enclosure

Stainless Steel Steering Wheel w Auto Helm and SW Cover**2 Lewmar 42 Self Tailing Winches****1 Lewmar 8 Single Speed Winch****1 Lewmar 16 Two Speed Winch****INTERIOR ACCOMMODATIONS****Aft Cabin w Double Bed, Ample Storage and Hanging Closet****V-Berth - No Cushions****Port and Starboard Settees w Convertible Dinette****Navigation Table****Full Galley w Force 10 Electric Stove, Double Stainless Steel Sink, Ice Box, Refrigerator / Freezer, GE Microwave, Deep Storage and Small Pantry****Enclosed Head w Flushing Toilet and Separate Fresh Water Shower and Tub****Engine Room and Access****ELECTRONICS****Raymarine Auto Pilot w Auto Helm****Garmin GPS and Chart Plotter****Raytheon Digital Depth Finder****VHF Radio****Marine Stereo****DINGHY****West Marine Dinghy, Hard Bottom****Mercury 4 Stroke Outboard Engine, 3.5 HP**

Please note: The Dinghy is Included with the Purchase of the boat. Pier One Yacht Sales will not be able to do the Title Work on this Dinghy and will be the responsibility of the buyer.

ELECTRICAL

30 Amp Shore Power

3 Batteries

1 Battery Switch

2 Battery Switches

Xantex 20 Battery Charger

Hot Water Heater

Haier Portable Air Conditioner

Exclusions

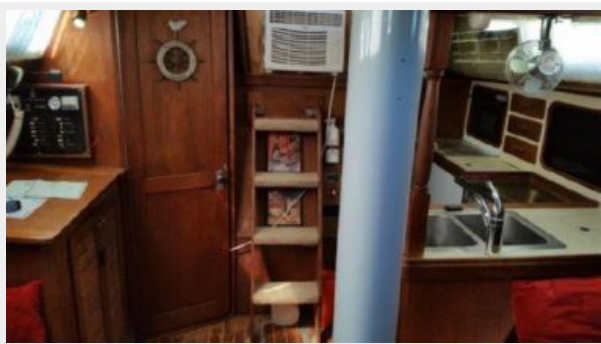
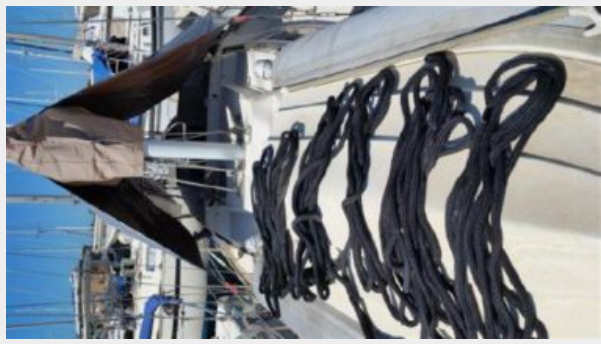
Owner's personal belongings.

Disclaimer

The Company offers the details of this vessel or yacht in good faith but cannot guarantee or warrant the accuracy of this information nor warrant the condition of the vessel. A buyer should instruct his representatives, agents, or his surveyors, to investigate such details as the buyer desires validated. This vessel or yacht is offered subject to prior sale, price change, or withdrawal without notice.

PHOTOS



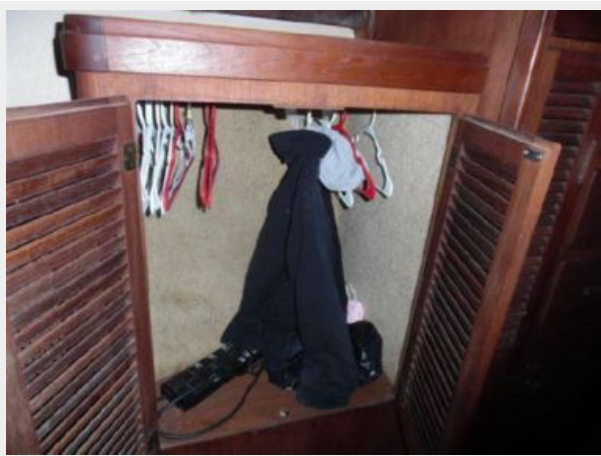
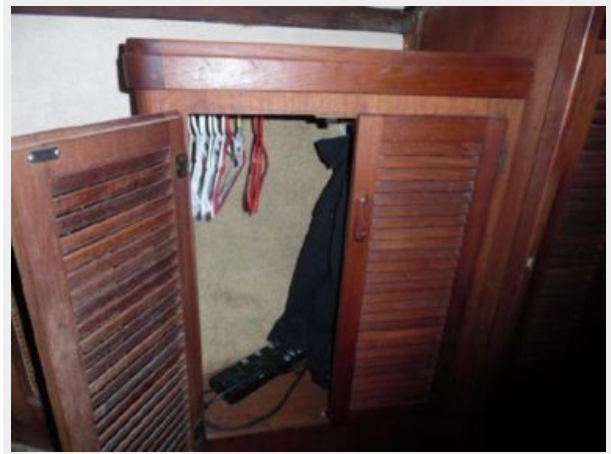


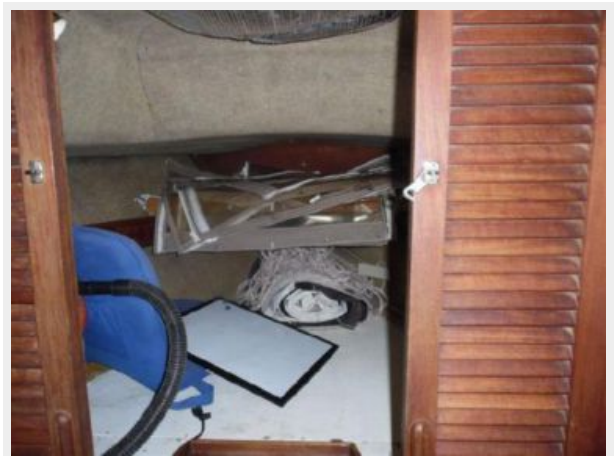


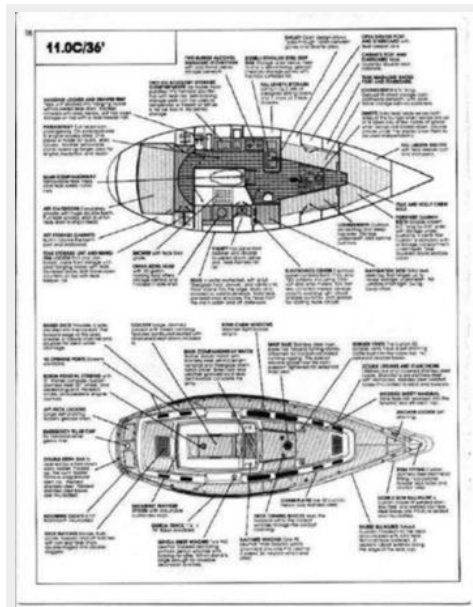
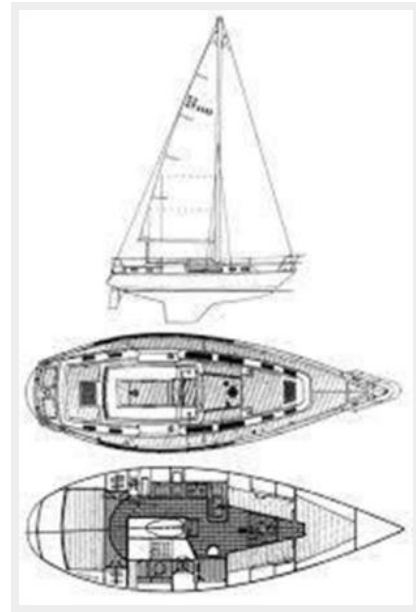












CONTACTS

Andrey Shestakov, leading yacht broker of the sales department of Shestakov Yacht Sales Inc. Shestakov Yacht Sales Inc., the official representative of the Miami/Fort Lauderdale FL headquarters.

Contact details

Email: andrey@shestakovyachtsales.com

Web: shestakovyachtsales.com/en/

Telephones

USA: +1(954)274-4435

Office hours

Monday – Saturday: **9:00 - 21:00** EDT

Sunday: **closed**

Address



Harbour Towne Marina, 850 NE 3rd St,
STE 213, Dania, FL 33004