

SEAS THE DAY — CATALINA



Судостроитель: CATALINA

Год постройки: 1995

Модель: Крейсерская яхта

Цена: ЦЕНА ЯХТЫ ПО ЗАПРОСУ

Местонахождение: United States

Длина общая: 36' 0" (10.97m)

Ширина: 11' 11" (3.63m)

Макс. осадка: 4' 5" (1.35m)

Купить **Seas the Day — CATALINA** а также выбрать подходящую вам яхту из нашего каталога яхт вам поможет опытный яхтенный брокер Андрей Шестаков. На сегодняшний день компания **Shestakov Yacht Sales Inc.** имеет большое количество яхт в собственном списке продаж, а также тесно сотрудничает со всеми крупными яхтенными производителями по всему миру.

Для того чтобы купить яхту **Seas the Day — CATALINA** а также проконсультироваться по любому вопросу связанному с покупкой, продажей, чартером яхт позвоните по телефону **+7(918)465-66-44**.

ОГЛАВЛЕНИЕ

ОГЛАВЛЕНИЕ	2
ХАРАКТЕРИСТИКИ	5
Обзор	5
Основная информация	5
Размеры	5
Скорость, вместимость и масса	6
Размещение	6
Корпус и палуба	6
Информация о двигателе	6
ПОДРОБНОЕ ОПИСАНИЕ	7
Features	7
Исключения	9
Отказ от ответственности	9
ФОТОГРАФИИ	10
From across the canal...	10
At the dock...	10
Starboard side deck	10
Stern view and Custom Arch/Dinghy Davits	10
Port side deck	11
Looking aft	11
Looking forward	11
Cockpit	11
Helm	12
Ready for a relaxing evening...	12
Port cabin top	12
Starboard winch on cabin top	12
Looking aft from companionway	13
Sheet winch	13

Compass, Autopilot..	13
Helm instruments	13
NEW Raymarine Chartplotter	14
Anchor locker	14
Looking below from companionway	14
Looking below from companionway, Starboard side	14
Looking below from companionway	14
Galley	15
Galley	15
Galley	15
Dry storage next to galley sink	15
Propane Stove with oven	16
Large refrigerator/freezer	16
Stove top	16
Galley sink	16
Navigation Area	16
Starboard salon with full seating	16
Starboard side salon, with table up	17
Port side salon	17
Forward cabin...	17
Looking forward	17
Large Vee Berth with New Mattress...	17
Storage...	17
Hanging locker forward, starboard side	18
Forward Head	18
Forward Head	18
Large shower area	18
Port storage in salon	19
Starboard storage in salon	19

Navigation Area	19
Navigation Area	19
Aft cabin	20
Large berth in aft cabin	20
Television and storage forward in salon	20
Clock and Barometer	21
Haul Out	21
water heater	21
Rudder and Keel	21
Batteries, six volt golf cart	21
Engine	21
Engine	22
Engine	22
Manufacturer Provided Image	22
КОНТАКТЫ	23
Контактная информация	23
Телефоны	23
Время работы	23
Адрес	23

ХАРАКТЕРИСТИКИ

Обзор

The Catalina 36 has a great reputation and is one of the finest sailing vessels ever produced and "Seas the Day" is a FINE example of this very popular boat. Her Knowledgeable SECOND OWNER has maintained and upgraded her to High Standards.

Here are just some of the upgrades and equipment on "Seas the Day":

- Custom Arch with Dinghy Davit installed in 2014
- NEW 2016 Bimini and Isinglass for the Dodger
- Raymarine A75 Multifunction Display installed Sept. 2014
- Raymarine ST 60 Speed, Depth and Wind instruments
- Raymarine Wheel Auto Pilot with NEW 2014 Drive
- New NavPods for the electronics installed 2014
- Teak Companionway Doors with Plexiglas windows and screens
- Custom Memory Foam V-Berth Mattress in owners cabin forward
- WINCHRITE Electric Winch Handle
- Bottom painted with SeaHawk Biocop November 2016
- COMPLETE, DETAILED Maintenance Log since boat was purchased in 1999
- New in 2018, two separate banks of Trojan 105 6 volt batteries, one for the house and one for the engine

Check out Full Specs for all the details...

Основная информация

Тип судна: Крейсерская яхта

Модельный год: 1995

Год постройки: 1995

Страна: United States

Размеры

Длина общая: 36' 0" (10.97m)

Длина по ватерлинии: 30' 3" (9.22m)

Длина палубы: 36' 4" (11.07m)

Ширина: 11' 11" (3.63m)

Макс. осадка: 4' 5" (1.35m)

Трапы: 52' 2" (15.90m)

Скорость, вместимость и масса

Водоизмещение: 14100 Pounds

Вместимость воды: 80 Gallons

Вместимость сточного бака: 18 Gallons

Объем топливного бака: 25 Gallons

Размещение

Всего кают: 1

Всего коек: 4

Всего ком. состава: 1

Корпус и палуба

Материал корпуса: Fiberglass

Комплектация корпуса: Monohull

Информация о двигателе

Двигатели: 1

Производитель: Universal

Модель: m35

Тип двигателя: Inboard

Тип топлива: Diesel

ПОДРОБНОЕ ОПИСАНИЕ

Features

Accommodations

Large roomy boat, bright and airy below. Very easy companionway to come up on deck, Teak and Holly cabin sole and Teak bulkhead and trim. Large dinette with smaller dinette that seats two and converts to single berth. Owners cabin forward with large head and access from owners cabin or salon and plenty of storage and a hanging locker.

- Two staterooms sleep 4, dinette sleeps 2, second dinette sleeps 1, to accommodate 7 owners and guests.
- Large aft stateroom with Queen bed
- Owners cabin forward has a Custom Memory Foam mattress, **NEW 2015**
- Large Head with Shower and entry from owners cabin
- Teak companionway doors with screens and Plexiglas inserts. **What a difference these doors make for living aboard**
- Teak and Holly Floor
- Seaward two burner propane stove with oven
- **NEW 2013** Large Ice Box with Adler Barbour 12 volt Refrigeration and freezer compartment
- Plenty of Storage for extended trips
- Twin Stainless Steel sinks
- Hot Water Heater, both 120V and engine heating
- Microwave

Electronics

- **NEW 2014** Raymarine A75 Multifunction Display
- West Marine VHF
- Raymarine Wheel Pilot, **NEW 2014** drive unit
- Raymarine ST 60 Speed Depth and Wind Instruments
- **NEW 2014** NavPods for instruments and Chartplotter
- AM/FM Stereo

Electrical and Mechanical

- **NEW 2018** Separate Engine Start Battery bank with two Trojan 105 amp batteries
- **NEW 2018** Two Trojan 105 amp hour batteries for house bank
- **NEW 2017** ProNautic 12-20P Battery Charger
- Jabsco manual toilet
- Macerator pump for holding tank

Sails and Rigging

- **Tall Rig with 2005 150% Hood Furling Genoa**
- Mainsail, Dacron with Reef, Full Battens and Dutchman Flaking System
- **NEW 2016** Main Sail Cover
- Internal Halyards, Low Stretch Sail Handling
- Inboard and Outboard Genoa Tracks
- Traveler Control w- Adjuster System
- Boom Vang
- Single Line Mainsail Reefing System
- Two Lewmar, Two-Speed Self Tailing Primary Winches
- Two Lewmar Self Tailing Jib Halyard and Mainsheet Winch in cockpit
- Schaffer Headsail Roller Furling Gear
- WINCHRITE Electric Winch Handle

Engine and controls

- Universal Diesel Engine, 35 hp., Model 35B 4 Cylinder Fresh Water Cooled, with Panel and Tachometer and only 620 hours
- **NEW 2017** Raw Water Pump
- Racor Fuel Filter
- Pedestal Steering, Brake, Engine Controls
- Complete service on engine **JUNE 2017**

Deck and Hull

- Teak companionway doors with screens and Plexiglas inserts
- **NEW 2016** Bimini and Dodger with **NEW 2016** Isinglass with side hand holds
- **NEW 2014** Custom Arch with Dinghy Davits
- Maxwell 800 electric chain/rode windlass
- Danforth anchor with 30 feet of chain and 3/4 rode

X

Manufacturer Provided Description

Because the Catalina 36 is easily handled by a couple, has a big comfortable cockpit, a spacious interior with two private cabins and the integrity to pursue cruising dreams, many experienced sailors consider the Catalina 36 the perfect boat for their sailing

lifestyle.

The Catalina 36 MkII has all the important characteristics that made the original the most popular 36-foot sailboat in the world. The Mark II Catalina 36 is built in the same seakindly moderate displacement hull. It tracks surely and performs well in a variety of conditions. The deck is the classic trunk cabin configuration - proven, comfortable and functional. The main cabin and galley have received special attention to design and detail. The galley is a functional 'U' shape, with composite countertops, the sinks are near centerline for proper drainage underway. A large refrigerated ice box is aft and a dry food locker is forward. A gimballed, stainless steel LPG stove with oven is standard equipment. The main cabin can be arranged with a dinette or traditional table. The two seats and game table to starboard can be made into a settee or berth with the cushions provided. The entertainment center cabinet can be fitted with a stereo and concealed TV. The main cabin and all interior teak has the warmth and durability only obtained with multiple coats of varnish.

The 36 has stainless steel hand rails and anodized spars, reducing maintenance on deck and extending the sailing season. The mechanical, electrical and plumbing systems have been re-engineered to increase dependability and accessibility. Engine access, for example, is excellent, with the one-piece, insulated enclosure removed. The hull is rugged, hand-laminated, solid fiberglass; the keel is lead with integrally cast stainless steel bolts. The mast is stepped through the deck on the keel and has inline spreaders and fore and aft lower shrouds, a sturdy arrangement that is easy to tune.

Исключения

При продаже яхты исключаются личные вещи владельца.

Отказ от ответственности

Компания предоставляет описание судна или яхты добросовестно, но не может гарантировать точность этой информации, а также не ручается за техническое состояние. Покупатель должен проинструктировать своих агентов или оценщиков исследовать представленную информацию более подробно, по собственному желанию. Продажа судна или яхты, изменение цены или снятие с продажи будет происходить без предварительного уведомления.

ФОТОГРАФИИ

From across the canal...



At the dock...



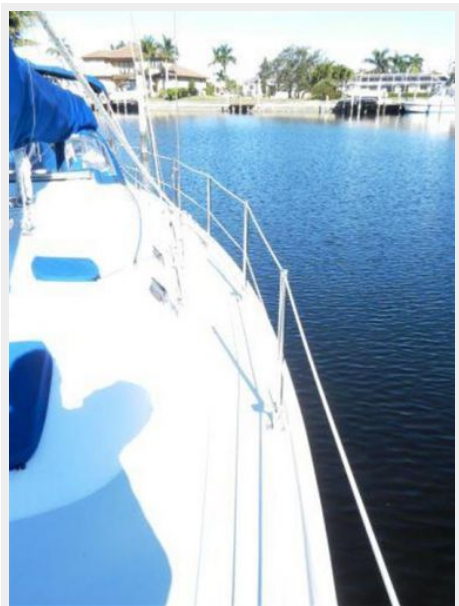
Starboard side deck



Stern view and Custom Arch/Dinghy Davits



Port side deck



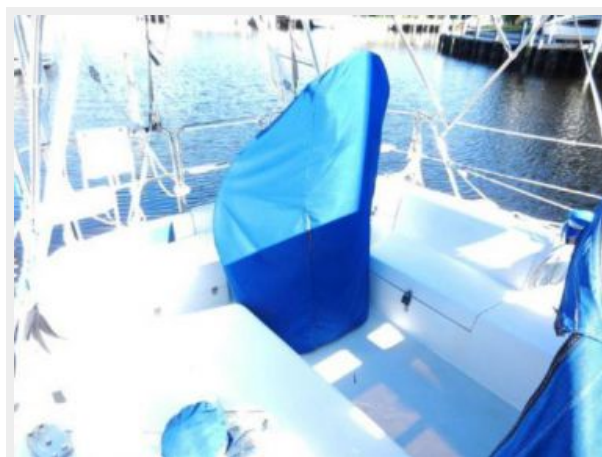
Looking aft



Looking forward



Cockpit



Helm



Ready for a relaxing evening...



Port cabin top



Starboard winch on cabin top



Looking aft from companionway



Sheet winch



Compass, Autopilot..



Helm instruments



NEW Raymarine Chartplotter



Anchor locker



Looking below from companionway



Looking below from companionway, Starboard side



Looking below from companionway



Galley



Galley



Galley



Dry storage next to galley sink



Large refrigerator/freezer



Propane Stove with oven



Stove top



Galley sink



Navigation Area



Starboard salon with full seating



Starboard side salon, with table up



Port side salon



Looking forward



Forward cabin...



Large Vee Berth with New Mattress...



Storage...



Hanging locker forward, starboard side



Forward Head



Forward Head



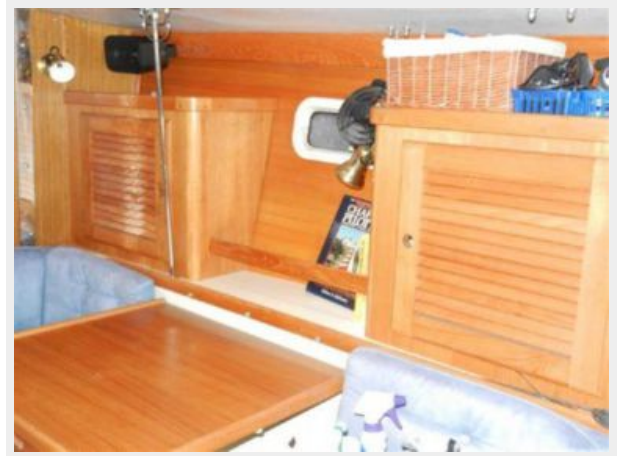
Large shower area



Port storage in salon



Starboard storage in salon



Navigation Area



Navigation Area



Aft cabin



Large berth in aft cabin



Television and storage forward in salon



Clock and Barometer



Haul Out



Rudder and Keel



water heater



Batteries, six volt golf cart



Engine



Engine



Engine



Manufacturer Provided Image



КОНТАКТЫ

Андрей Шестаков (Andrey Shestakov) – ведущий яхтенный брокер отдела продаж яхт и судов компании Shestakov Yacht Sales Inc. Официальный представитель Shestakov Yacht Sales Inc. для русскоговорящих клиентов в центральном офисе компании в Майами/Форт Лодердейл/Флорида/США.

Контактная информация

Email: andrey@shestakovyachtsales.com

Web: shestakovyachtsales.com

Телефоны

Краснодарский край: **+7(918)465-66-44**

США, Майами, Флорида: **+1(954)274-4435**

Время работы

Понедельник – Суббота: **9:00 - 21:00**
EDT

Воскресенье: **Закрето**

Адрес



Harbour Towne Marina, 850 NE 3rd St,
STE 213, Dania, FL 33004